

Hiding Charts in Crystal Reports from User Inputs



Applies to:

SAP Crystal Reports 2008. For more information, visit the [Business Objects homepage](#).

Summary

This article explains how to create a Crystal Report that can show/hide the charts/sections the user indicates.

Author: Liliana Gil

Company: SAP Global Delivery BA

Created on: 23rd November 2010

Author Bio



Business Intelligence Consultant with wide BI experience. She has worked as Developer, Analyst and Project Leader in Data Warehouse implementations, including ETL processes, Reporting and Dashboard, with Business Objects tools, both relational and OLAP data sources.

Table of Contents

Introduction	3
Business Scenario	3
The Result.....	3
Solution	3
Step 1:.....	4
Step 2:.....	5
Step 3:.....	6
Step 4:.....	7
Related Content.....	9
Copyright.....	10

Introduction

This article discusses on how to build a Crystal Report giving the user the option to choose the components he wants to be showed. The following is a real case study.

Business Scenario

In this case, we talk about an Employee Competencies Report. There are a group of evaluators with different roles, like Direct Managers and Colleagues, and each of these have to set a Note for each competence where the Employee is being evaluated.

The Employee Competencies Report has three parts, and the user wants to be able to choose which part/s to show:

- Basic Data (employee name, OU, manager, etc)
- Notes by Competence/Role Summary Chart
- Notes by Role (one chart for each competence)

The Result

There user chooses which part/s to show before the report is executed.

Solution

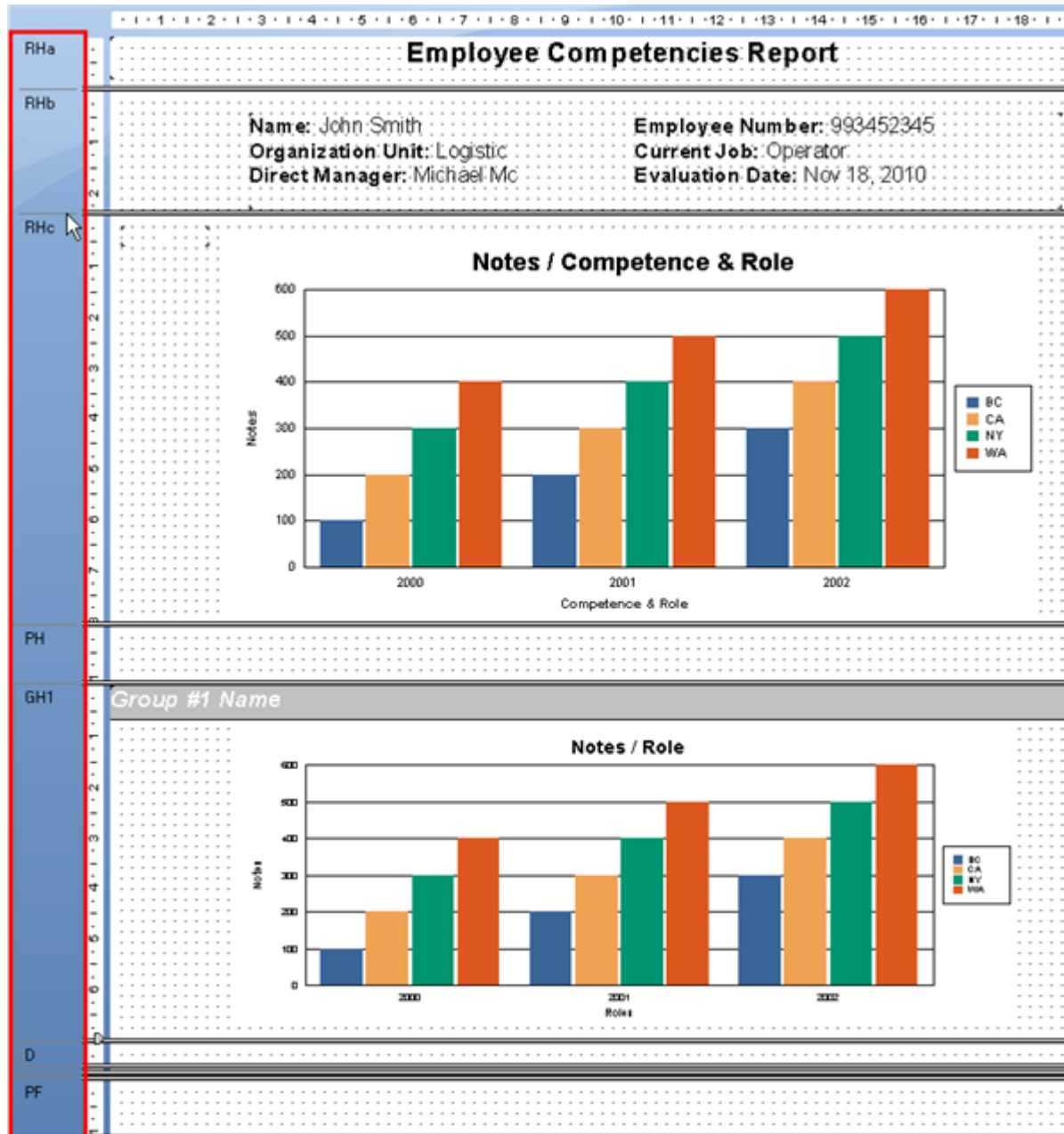
To achieve the expected result, we need to create a List Parameter with three options: Basic Data; Notes by Competence/Role; Notes by Role for each competence. Before the report is executed, the user could choose one o more parts to be showed.

Each part of the report is a different section in Crystal Report (a group section in the third option). Each option selected has an associated value (i.e. 0, 1, 2). A section is hidden or not depending on the value selected.

Here are the steps:

Step 1:

Create a report with sections. Create the report considering that in each part you have the possibility of hide/show needs to be in a separate section.



Picture 1

Step 2:

Create a Parameter “Sections” with a Static List of values as follows:

Value Field: (None) | Description Field: (None)

Value	Description
0	Basic Data
1	Notes / Competence & Rol
2	Notes / Rol (for each competence)
Click here to add item	

Value Options:

Option	Setting
Show on (Viewer) Panel	Editable
Prompt Text	Select Sections to display:
Prompt With Description Only	False
Optional Prompt	False
Default Value	
Allow custom values	True
Allow multiple values	True
Allow discrete values	True
Allow range values	False
Min Value	
Max Value	

Buttons: OK, Cancel, Help

Picture 2

Include this parameter in the report (drag and drop it in a empty part of the report) so you can see it when the report is executed.

Select Sections to display: Sections

Available Values:

- 0 - Basic Data
- 1 - Notes / Competence & Rol
- 2 - Notes / Rol (for each competence)

Selected Values:

Enter a Value: 0

Buttons: Remove, Remove All, OK, Cancel

Step 3:

Set up **Suppress** option for each section.

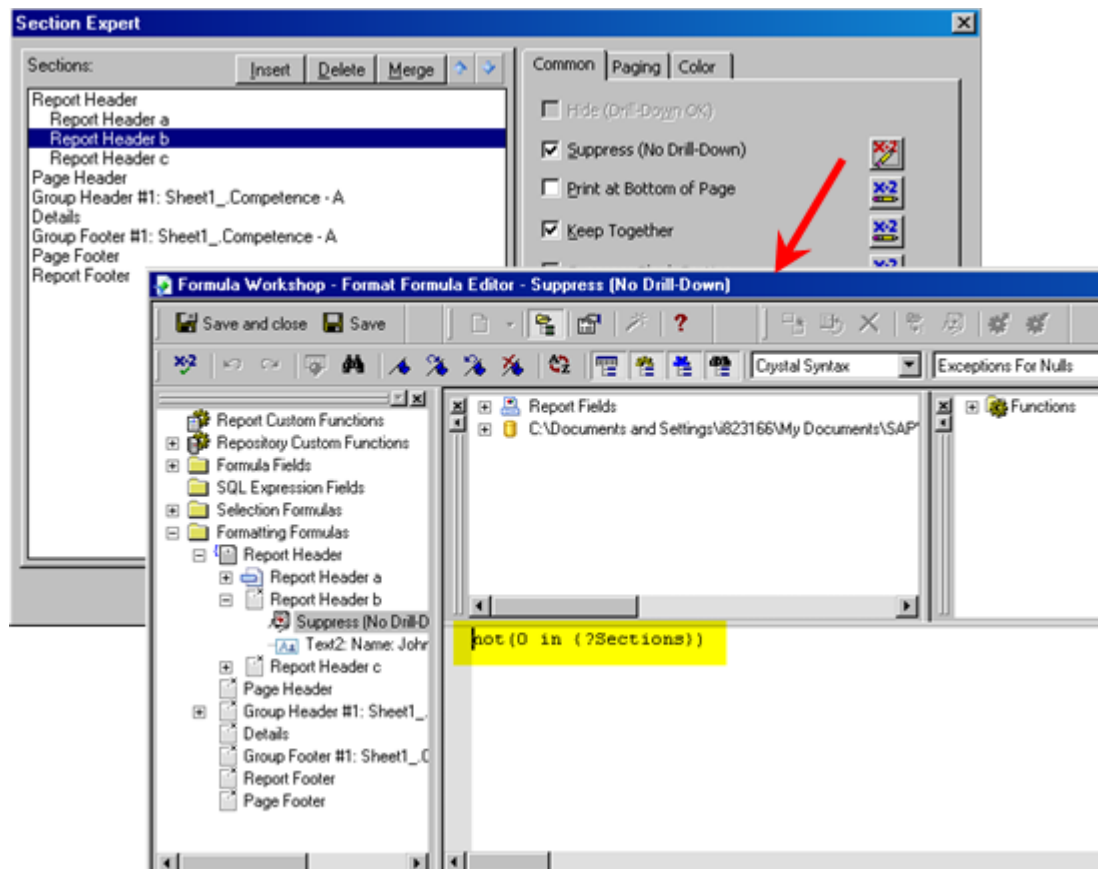
In the Section Expert, for each section that needs to be show/hide regarding the parameter, set up the option Suppress (No Drill-Down) with a condition like

```
not(<number> in {?<parameter>})
```

Where <number> is the corresponding option and <parameter> is the name of the parameter, in this case Sections.

For example, Report Header b section (RHb in Picture 1) corresponds to option "0-Basic Data" in the List of values. Then, the condition will be

```
not(0 in {?Sections})
```



The others sections, will be as follows:

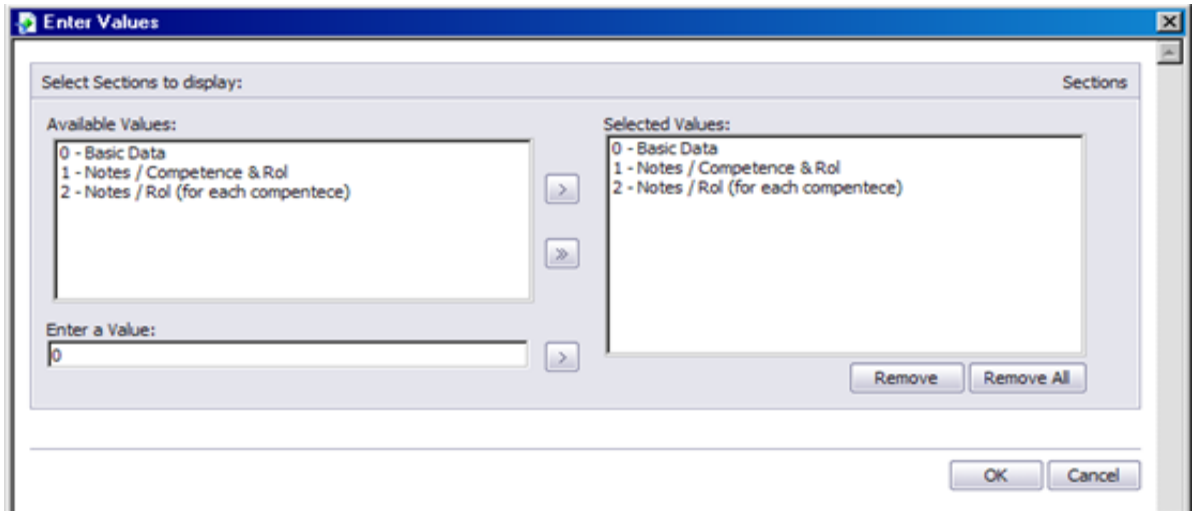
RHc: not(1 in {?Sections})

GH1: not(2 in {?Sections})

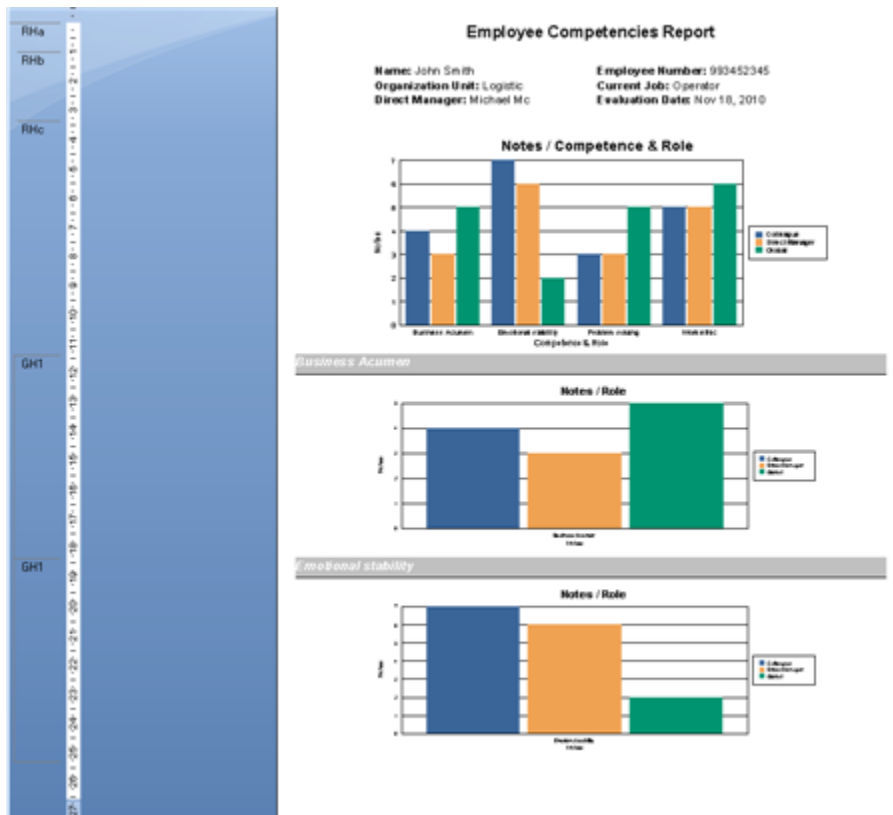
Step 4:

Check Results

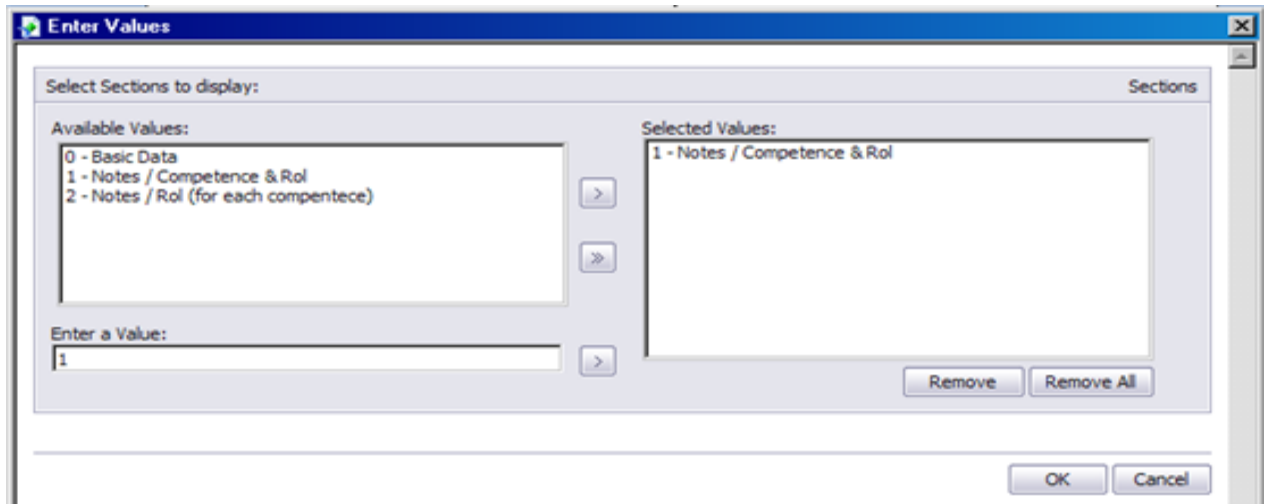
- a. Execute the reports with all the values selected for the parameter:



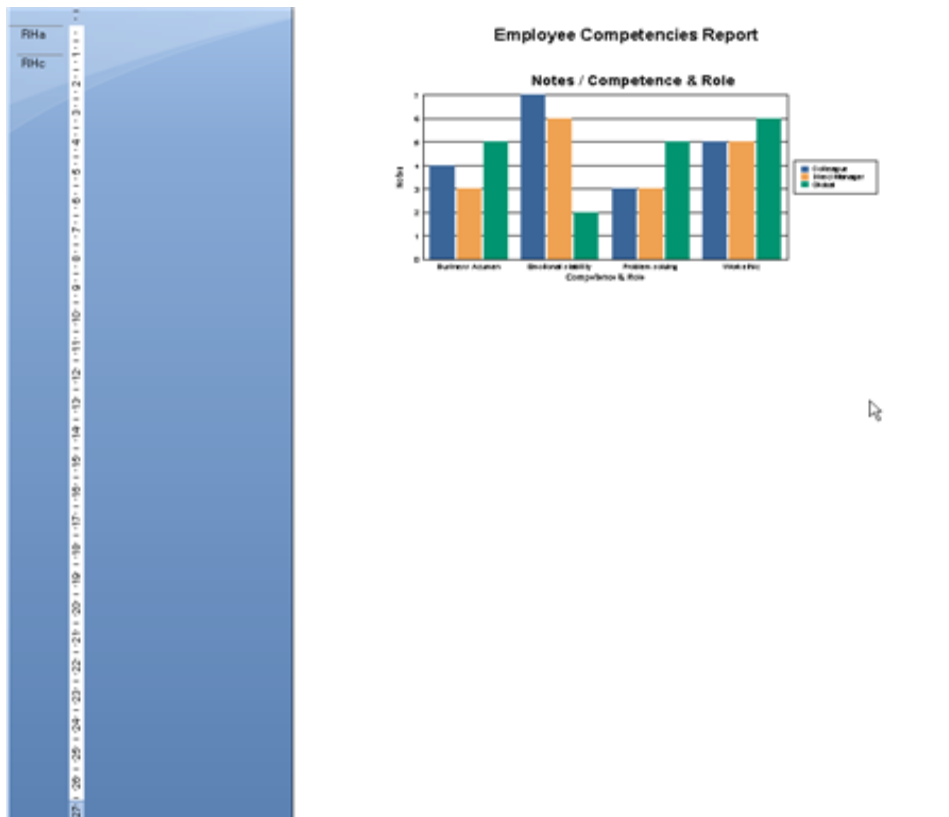
The report should show all the sections.



Execute the report with one value selected for the parameter:



The report should show only the selected section.



Related Content

[Selecting, Sorting, Grouping, and Summarizing Data in SAP Crystal Reports](#)

[SAP Network Blog: Making the Most of Prompting Improvements in Crystal Reports 2008](#)

[Crystal Report Home Page](#)

For more information, visit the [Business Objects homepage](#)

Copyright

© Copyright 2010 SAP AG. All rights reserved.

No part of this publication may be reproduced or transmitted in any form or for any purpose without the express permission of SAP AG. The information contained herein may be changed without prior notice.

Some software products marketed by SAP AG and its distributors contain proprietary software components of other software vendors.

Microsoft, Windows, Excel, Outlook, and PowerPoint are registered trademarks of Microsoft Corporation.

IBM, DB2, DB2 Universal Database, System i, System i5, System p, System p5, System x, System z, System z10, System z9, z10, z9, iSeries, pSeries, xSeries, zSeries, eServer, z/VM, z/OS, i5/OS, S/390, OS/390, OS/400, AS/400, S/390 Parallel Enterprise Server, PowerVM, Power Architecture, POWER6+, POWER6, POWER5+, POWER5, POWER, OpenPower, PowerPC, BatchPipes, BladeCenter, System Storage, GPFS, HACMP, RETAIN, DB2 Connect, RACF, Redbooks, OS/2, Parallel Sysplex, MVS/ESA, AIX, Intelligent Miner, WebSphere, Netfinity, Tivoli and Informix are trademarks or registered trademarks of IBM Corporation.

Linux is the registered trademark of Linus Torvalds in the U.S. and other countries.

Adobe, the Adobe logo, Acrobat, PostScript, and Reader are either trademarks or registered trademarks of Adobe Systems Incorporated in the United States and/or other countries.

Oracle is a registered trademark of Oracle Corporation.

UNIX, X/Open, OSF/1, and Motif are registered trademarks of the Open Group.

Citrix, ICA, Program Neighborhood, MetaFrame, WinFrame, VideoFrame, and MultiWin are trademarks or registered trademarks of Citrix Systems, Inc.

HTML, XML, XHTML and W3C are trademarks or registered trademarks of W3C®, World Wide Web Consortium, Massachusetts Institute of Technology.

Java is a registered trademark of Sun Microsystems, Inc.

JavaScript is a registered trademark of Sun Microsystems, Inc., used under license for technology invented and implemented by Netscape.

SAP, R/3, SAP NetWeaver, Duet, PartnerEdge, ByDesign, SAP Business ByDesign, and other SAP products and services mentioned herein as well as their respective logos are trademarks or registered trademarks of SAP AG in Germany and other countries.

Business Objects and the Business Objects logo, BusinessObjects, Crystal Reports, Crystal Decisions, Web Intelligence, Xcelsius, and other Business Objects products and services mentioned herein as well as their respective logos are trademarks or registered trademarks of Business Objects S.A. in the United States and in other countries. Business Objects is an SAP company.

All other product and service names mentioned are the trademarks of their respective companies. Data contained in this document serves informational purposes only. National product specifications may vary.

These materials are subject to change without notice. These materials are provided by SAP AG and its affiliated companies ("SAP Group") for informational purposes only, without representation or warranty of any kind, and SAP Group shall not be liable for errors or omissions with respect to the materials. The only warranties for SAP Group products and services are those that are set forth in the express warranty statements accompanying such products and services, if any. Nothing herein should be construed as constituting an additional warranty.