



How To... Use Utility Classes in CAF

Applicable Releases:

SAP NetWeaver Composition Environment 7.1

Topic Area:

Development and Composition

Capability:

Composition

Version 1.0

March 2008

© Copyright 2008 SAP AG. All rights reserved.

No part of this publication may be reproduced or transmitted in any form or for any purpose without the express permission of SAP AG. The information contained herein may be changed without prior notice.

Some software products marketed by SAP AG and its distributors contain proprietary software components of other software vendors.

Microsoft, Windows, Outlook, and PowerPoint are registered trademarks of Microsoft Corporation.

IBM, DB2, DB2 Universal Database, OS/2, Parallel Sysplex, MVS/ESA, AIX, S/390, AS/400, OS/390, OS/400, iSeries, pSeries, xSeries, zSeries, z/OS, AFP, Intelligent Miner, WebSphere, Netfinity, Tivoli, Informix, i5/OS, POWER, POWER5, OpenPower and PowerPC are trademarks or registered trademarks of IBM Corporation.

Adobe, the Adobe logo, Acrobat, PostScript, and Reader are either trademarks or registered trademarks of Adobe Systems Incorporated in the United States and/or other countries.

Oracle is a registered trademark of Oracle Corporation.

UNIX, X/Open, OSF/1, and Motif are registered trademarks of the Open Group.

Citrix, ICA, Program Neighborhood, MetaFrame, WinFrame, VideoFrame, and MultiWin are trademarks or registered trademarks of Citrix Systems, Inc.

HTML, XML, XHTML and W3C are trademarks or registered trademarks of W3C®, World Wide Web Consortium, Massachusetts Institute of Technology.

Java is a registered trademark of Sun Microsystems, Inc.

JavaScript is a registered trademark of Sun Microsystems, Inc., used under license for technology invented and implemented by Netscape.

MaxDB is a trademark of MySQL AB, Sweden.

SAP, R/3, mySAP, mySAP.com, xApps, xApp, SAP NetWeaver, and other SAP products and services mentioned herein as well as their respective logos are trademarks or registered trademarks of SAP AG in Germany and in several other countries all over the world. All other product and service names mentioned are the trademarks of their respective companies. Data contained in this document serves informational purposes only. National product specifications may vary.

These materials are subject to change without notice.

These materials are provided by SAP AG and its affiliated companies ("SAP Group") for informational purposes only, without representation or warranty of any kind, and SAP Group shall not be liable for errors or omissions with respect to the materials. The only warranties for SAP Group products and services are those that are set forth in the express warranty statements accompanying such products and services, if any. Nothing herein should be construed as constituting an additional warranty.

These materials are provided "as is" without a warranty of any kind, either express or implied, including but not limited to, the implied warranties of merchantability, fitness for a particular purpose, or non-infringement.

SAP shall not be liable for damages of any kind including without limitation direct, special, indirect, or consequential damages that may result from the use of these materials.

SAP does not warrant the accuracy or completeness of the information, text, graphics, links or other items contained within these materials. SAP has no control over the information that you may access through the use of hot links contained in these materials and does not endorse your use of third party web pages nor provide any warranty whatsoever relating to third party web pages.

SAP NetWeaver "How-to" Guides are intended to simplify the product implementation. While specific product features and procedures typically are explained in a practical business context, it is not implied that those features and procedures are the only approach in solving a specific business problem using SAP NetWeaver. Should you wish to receive additional information, clarification or support, please refer to SAP Consulting.

Any software coding and/or code lines / strings ("Code") included in this documentation are only examples and are not intended to be used in a productive system environment. The Code is only intended better explain and visualize the syntax and phrasing rules of certain coding. SAP does not warrant the correctness and completeness of the Code given herein, and SAP shall not be liable for errors or damages caused by the usage of the Code, except if such damages were caused by SAP intentionally or grossly negligent.

Disclaimer

Some components of this product are based on Java™. Any code change in these components may cause unpredictable and severe malfunctions and is therefore expressly prohibited, as is any decompilation of these components.

Any Java™ Source Code delivered with this product is only to be used by SAP's Support Services and may not be modified or altered in any way.

Document History

Document Version	Description
1.00	First official release of this guide

Typographic Conventions

Type Style	Description
<i>Example Text</i>	Words or characters quoted from the screen. These include field names, screen titles, pushbuttons labels, menu names, menu paths, and menu options. Cross-references to other documentation
Example text	Emphasized words or phrases in body text, graphic titles, and table titles
Example text	File and directory names and their paths, messages, names of variables and parameters, source text, and names of installation, upgrade and database tools.
Example text	User entry texts. These are words or characters that you enter in the system exactly as they appear in the documentation.
< Example text >	Variable user entry. Angle brackets indicate that you replace these words and characters with appropriate entries to make entries in the system.
EXAMPLE TEXT	Keys on the keyboard, for example, F2 or ENTER.

Icons





Icon	Description
	Caution
	Note or Important
	Example
	Recommendation or Tip

Table of Contents

- 1. **Business Scenario**..... 1
- 2. **Prerequisites** 1
- 3. **Step-by-Step Procedure**..... 2
 - 3.1 Create a CAF Project 2
 - 3.2 Importing the utility class 7

1. Business Scenario

It is quite common to make use of utility classes within java projects. In the previous version of Composition Application Framework (CAF) this capability was limited due to the way CAF handled custom code. With the Composition Environment version, this is a lot cleaner and this guide shows you how this is implemented.

2. Prerequisites

Before you start with this tutorial you should have installed the following software:

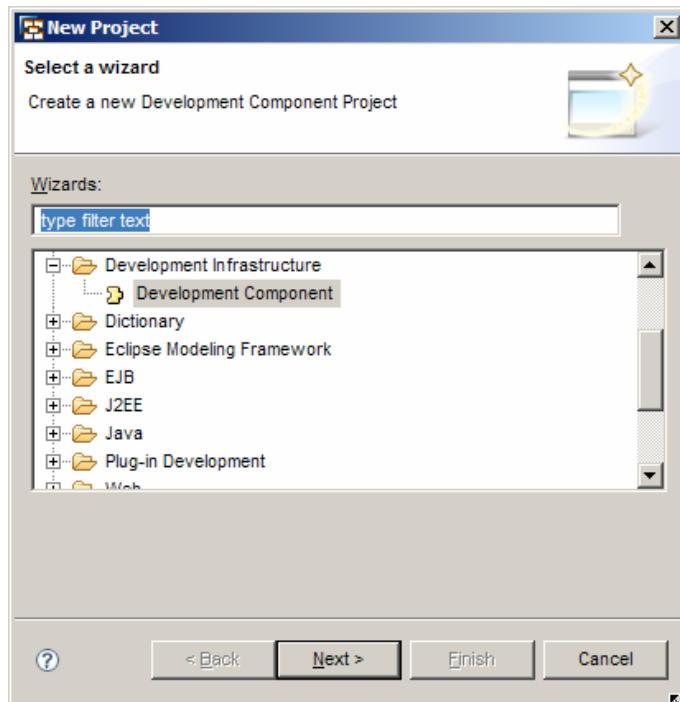
- SAP NetWeaver Developer Studio SAP NetWeaver Composition Environment 7.1 SP01 or higher.
- SAP NetWeaver Composition Environment 7.1 SP01 Application Server.

3. Step-by-Step Procedure

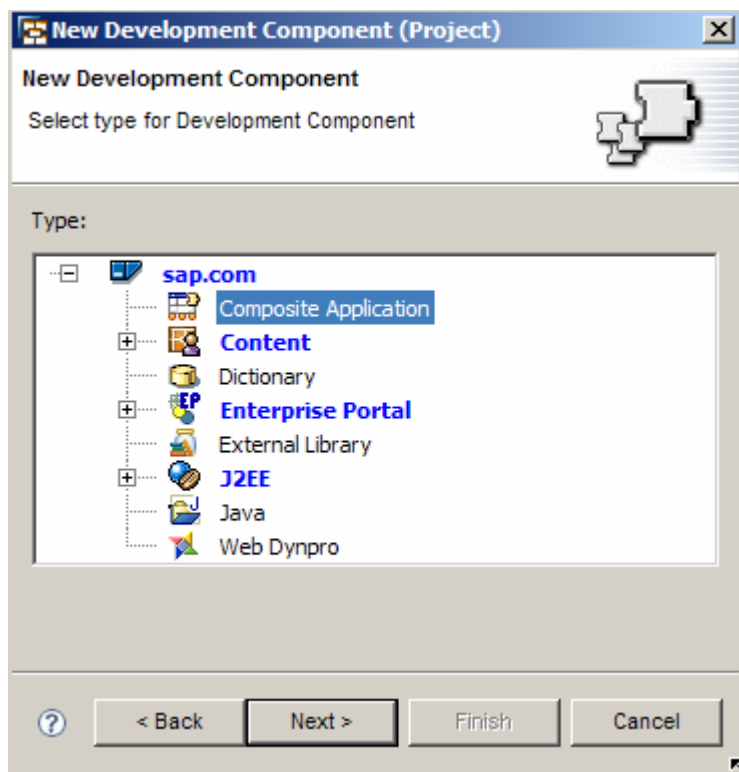
3.1 Create a CAF Project

Create a new CAF project by choosing *File* → *New* → *Project*.

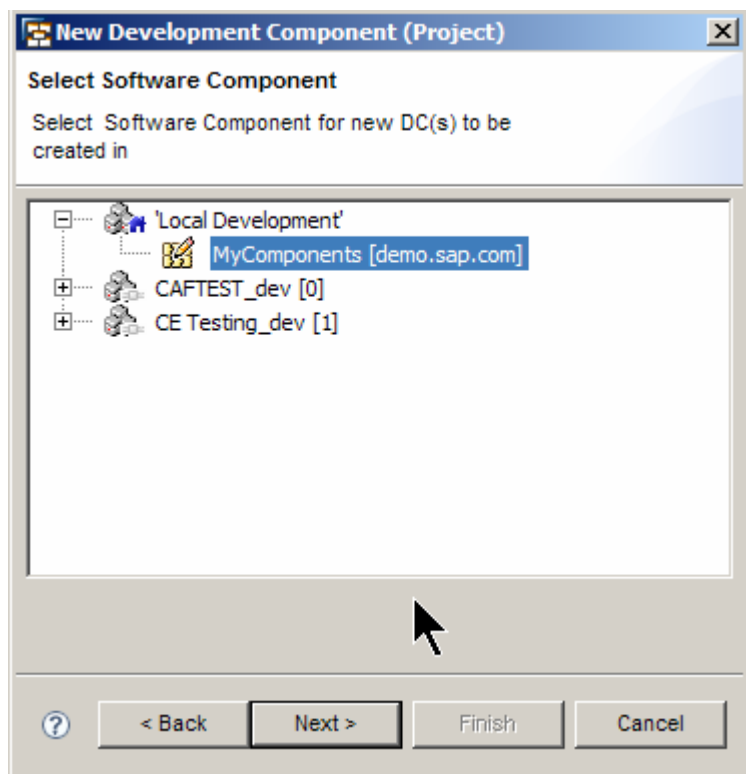
Choose Development Component and click *Next*.



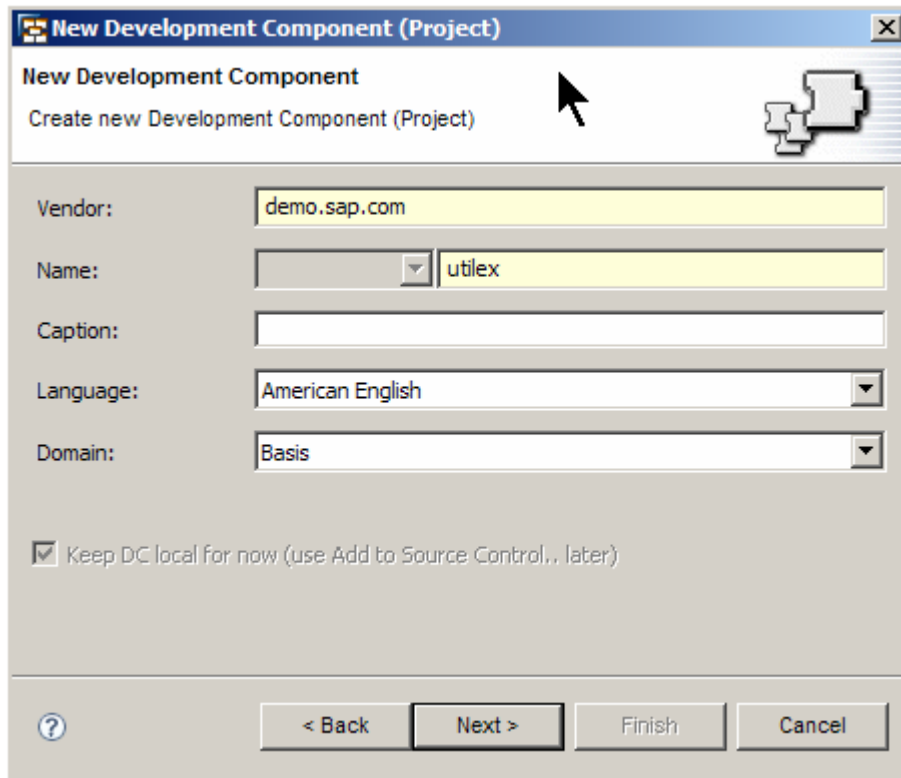
Choose *Composite Application* as the DC type and click *Next*.



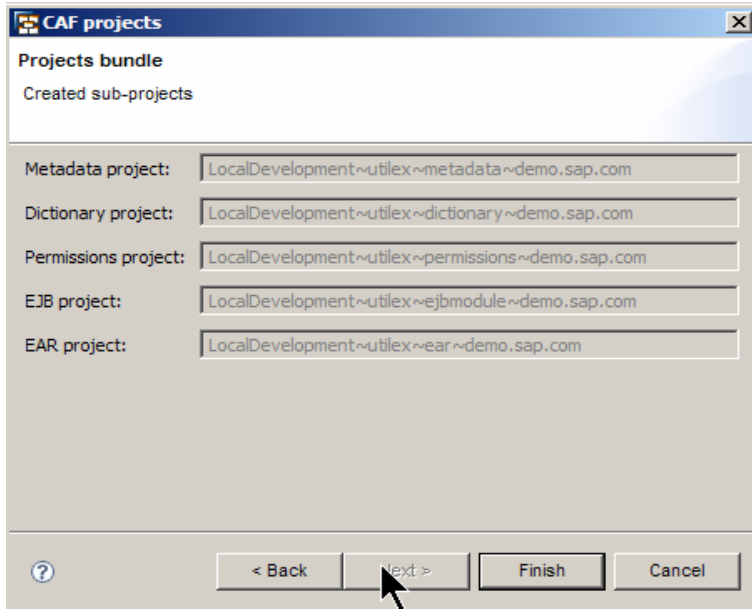
Place the development component in your local development configuration. This can also be placed in a track in NWDI.



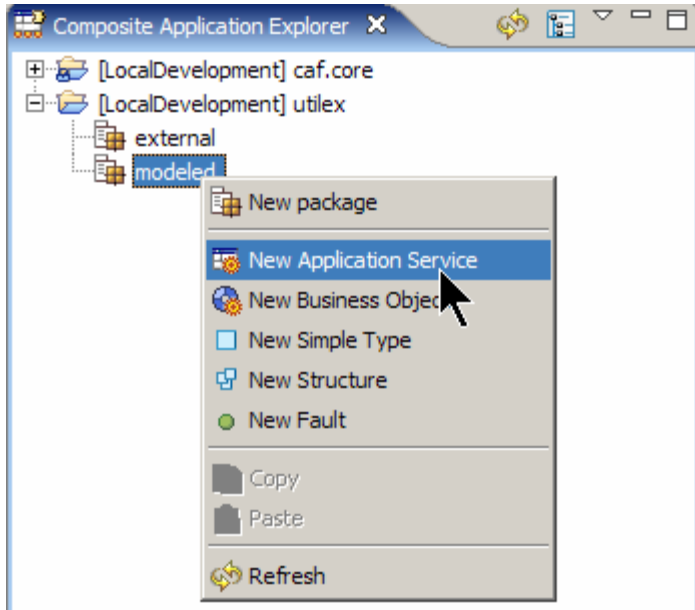
Give the project a name, and click *Next*.



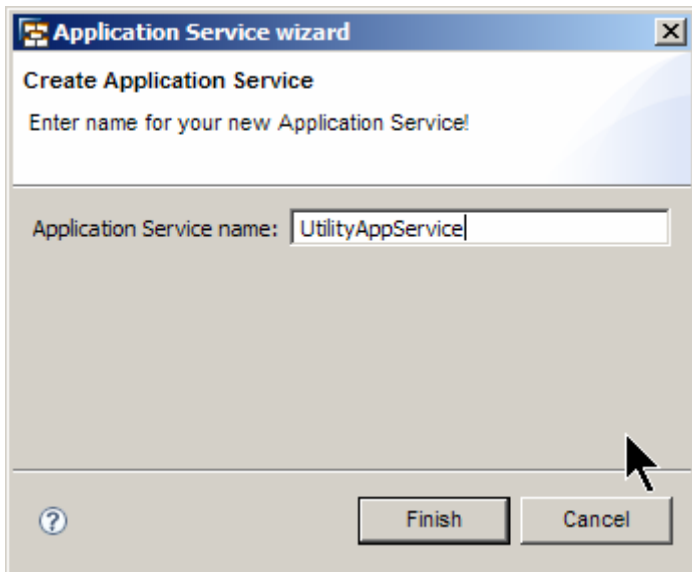
Click *Finish*. This will create all the required projects and open the Composite Application Perspective.



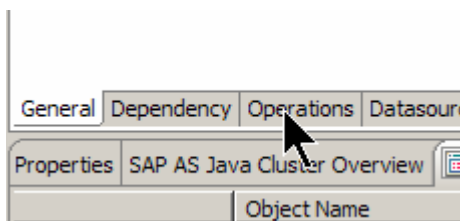
From the Composite Application Explorer, expand the project and choose *New Application Service*.



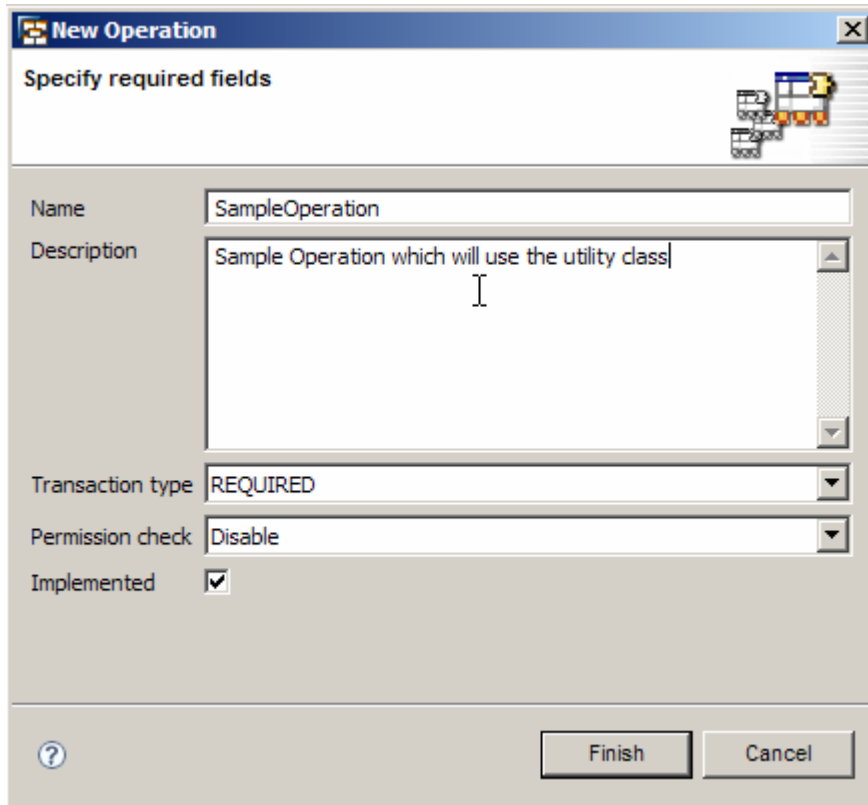
Give the Application Service a name, and click *Finish*.



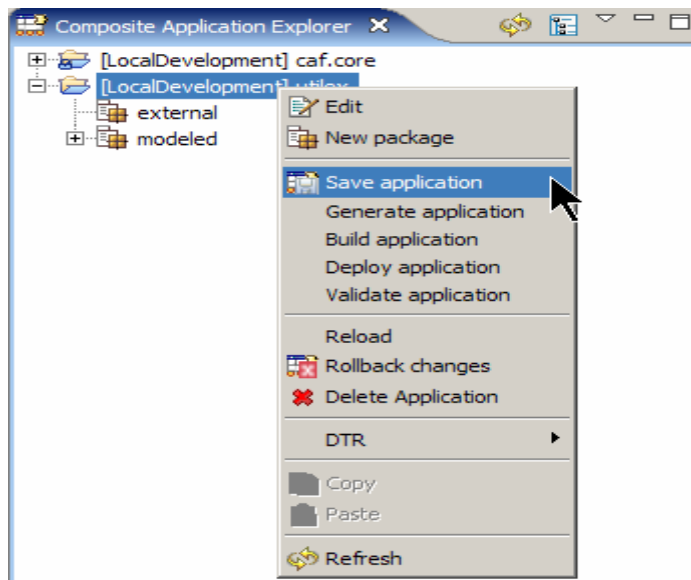
Switch to the *Operations* tab.



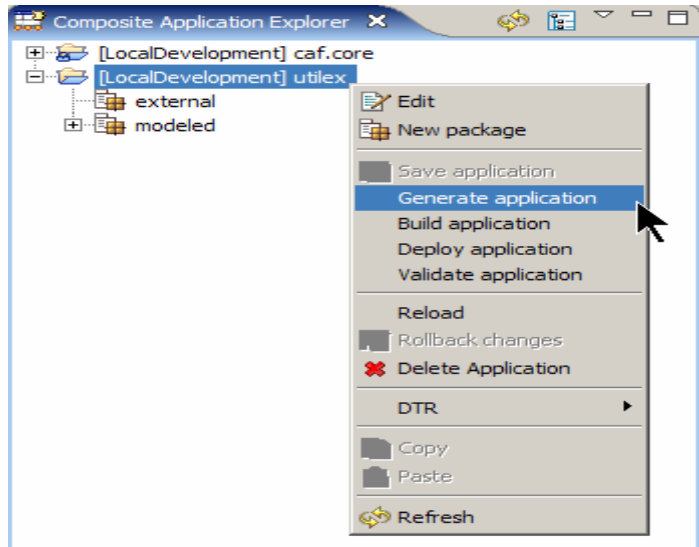
Add a sample operation, give it a description, and click *Finish*.



Choose *Save application*.

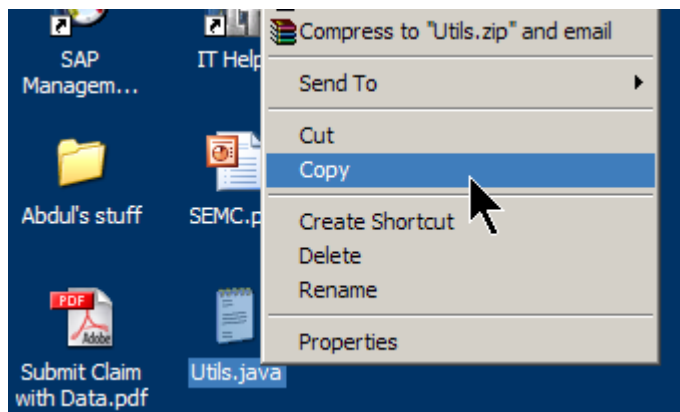


Choose *Generate application* so that all the java classes and packages are generated.

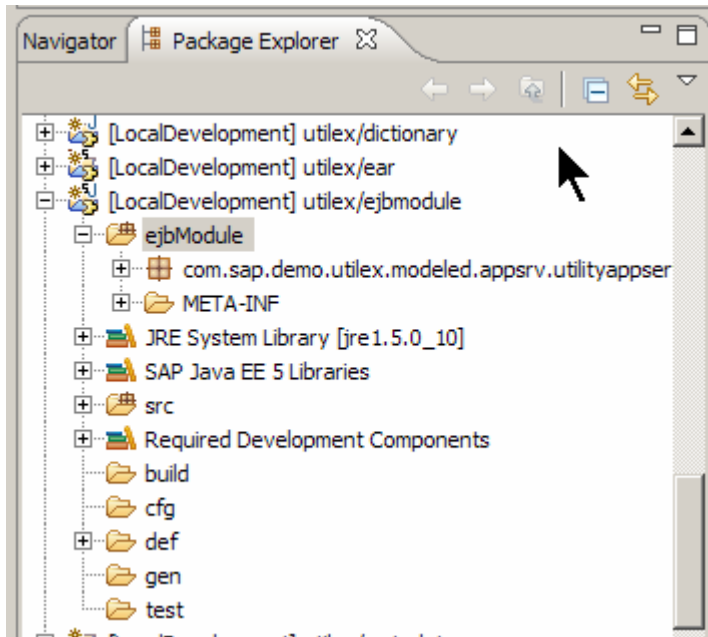


3.2 Importing the utility class

Copy the *Utils.java* file from the file system.



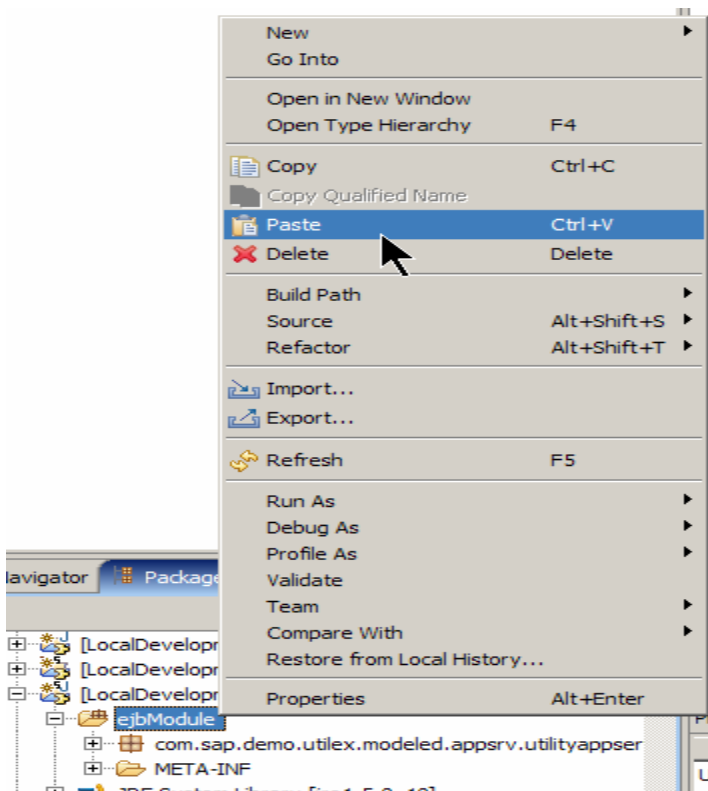
Expand the *ejbmodule* project from the Package Explorer.



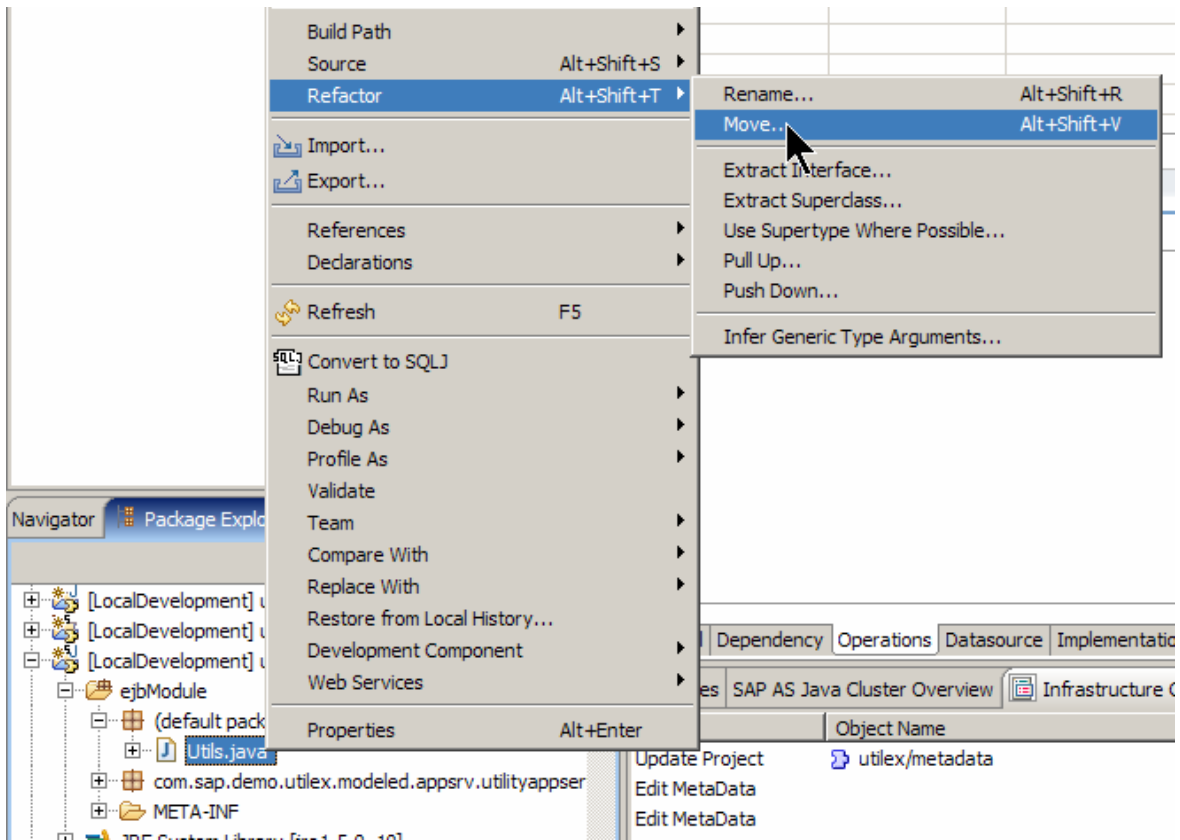
Note

Note that there is an *ejbmodule* folder inside this project. This is how CAF now handles custom code. Any file that is placed in this folder will not be overwritten by the framework.

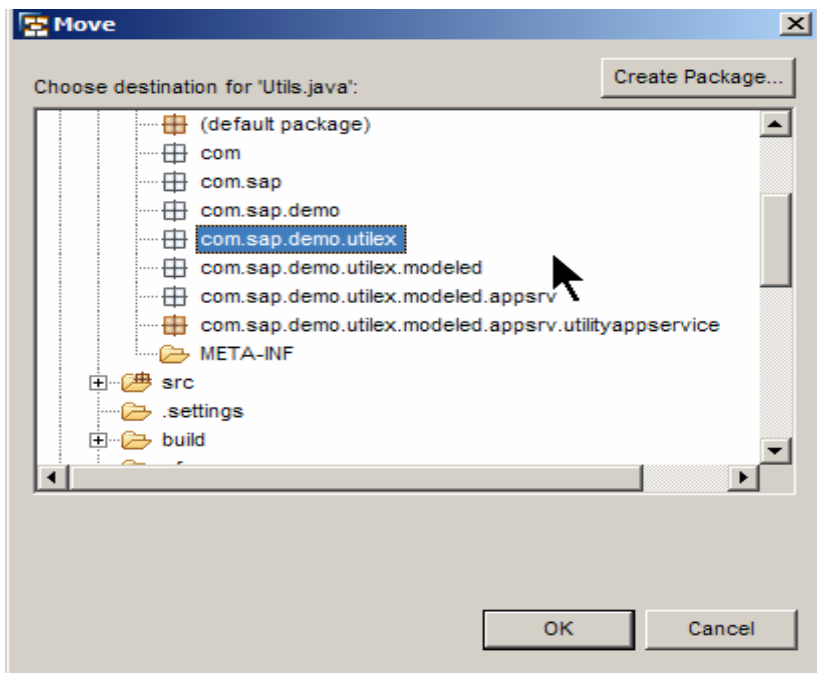
Right click on the *ejbmodule* folder and paste the utility class.



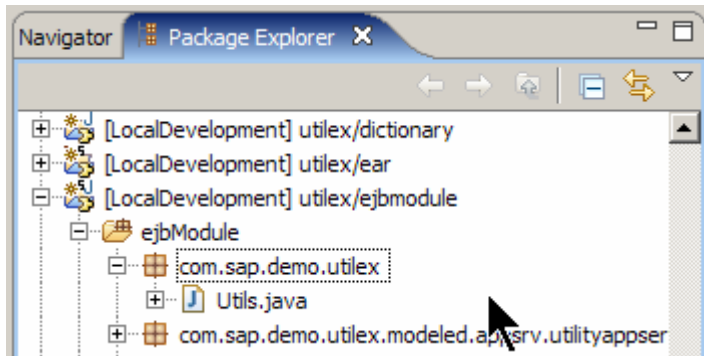
Now move the *Utils.java* file from the default package to a package that corresponds to your application, by choosing *Refactor* → *Move* from the context menu.



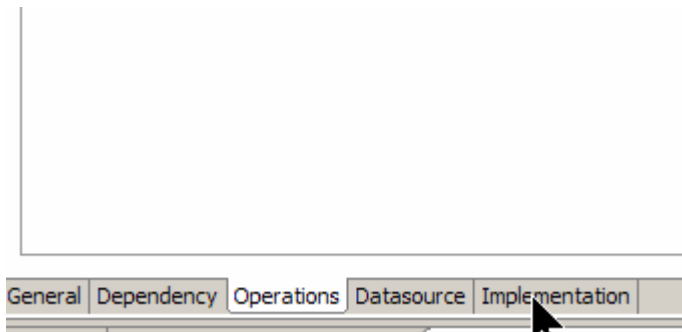
For the purposes of this example, let us move it into the *com.sap.demo.utilex* package.



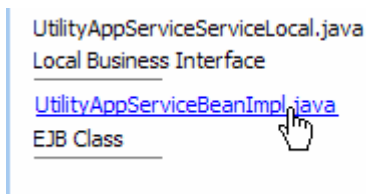
The result should look as shown in the figure below.



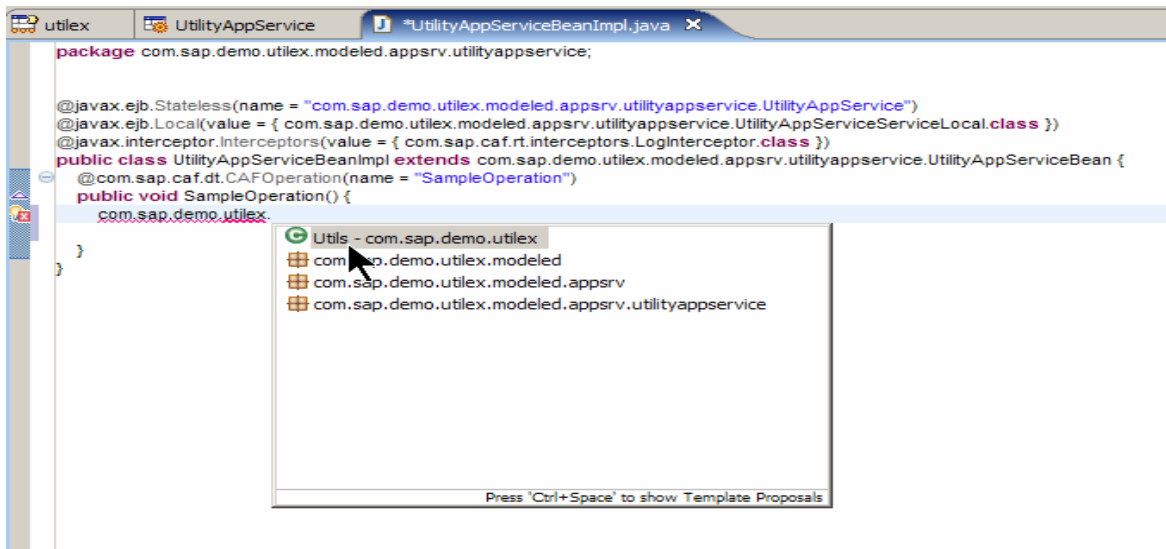
Switch to the *Implementation* tab to use the utility class in the sample operation added earlier.



Choose *UtilityAppServiceBeanImpl.java* link.



Now you can use this utility class within the Application Service.



www.sdn.sap.com/irj/sdn/howtoguides