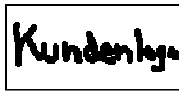
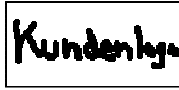


Authorizations in SEM-BPS



Index:

1.1	Overview	3
1.2	BPS Specific Authorizations.....	4
1.3	Authorization within SEM-BW	5
1.4	Planning Profiles:	6
1.5	Creation of User Specific Worklists via the user of Variables.....	6
1.6	Worklists/Variables – Replacement Type “Authorization”.....	6
1.7	Implementing Authorizations within SEM-BPS.	7
1.7.1	Overview	7
1.7.2	MacroRoles	Error! Bookmark not defined.
1.7.3	Authorization specification and design tasks during the SEM project.....	7
1.7.3.1	Business Blueprint	8
1.7.3.2	Realization.....	Error! Bookmark not defined.
1.7.3.3	Final preparation	8



1.1 Overview

SEM-BPS contains a number of special authorization objects, which are unique to SEM-BPS.

When a user attempts to carry out a specific function the system checks the special SEM-BPS authorization objects, however it also checks those authorization objects that are defined for reporting in the SAP Business Information Warehouse environment. **An SEM-BPS user must have both the SEM-BPS application-specific authorizations and the general SAP BW reporting authorizations to carry out a specific activity.**

SEM-BPS authorizations are maintained using the system administration tools, and the

BW reporting authorizations using the relevant functions under *Business Explorer -> Authorizations -> Reporting - Authorization Objects*.

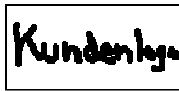
Within SAP, authorizations are controlled via the concept of roles, which are in turn assigned to specific users.

The interaction and use of the two types of authorizations is key in determining the appropriate authorization concepts to be utilized during implementation, and will potentially directly impact the overall design of the Planning Framework. Accordingly, it is key that authorization concepts be clearly understood and defined during the Blueprint phase of implementation, in order to avoid significant subsequent re-work.

It should be noted that SEM-BPS authorization objects will only impact the ability to perform planning specific activities, however authorizations achieved via the use of BW Reporting authorizations will not only impact planning specific activities but will also impact the ability to perform BW reporting.

I.E. The ability to control access to planning on specific Cost Centers can potentially be controlled via either restrictions in BW reporting on the InfoObject Cost Center or alternately can be achieved through the creation of unique planning packages, containing specific groups of Cost centers, and then restricting a users access to a specific package(s). If the first option is selected this will not only limit the users ability to plan on Cost Centers but will also limit their BW reporting access to those specific cost centers. The second alternative will only restrict the user's ability to plan on specific Cost Centers but will have no impact on their ability to run BW reports.

Authorization control for SEM-BPS purposes can be achieved directly through the use of SEM-BPS authorization objects **only**, (without the use of BW reporting authorizations) however, this has the potential to significantly increase the complexity of the overall planning framework.



SEM-BPS Authorization concepts should as far as possible be defined in conjunction with authorizations utilized for reporting purposes within the BW environment. Often times authorization requirements may be complementary.

An effective way to assist in the reduction of the ongoing maintenance of specific authorizations is to look at utilizing BW authorization functionality, which allows for the Control of access to Characteristic Values via the use of Hierarchies as opposed to individual values. This can become particularly important where there are regular changes to the values within the hierarchies or changes of assignments within these hierarchies. **For further information on setting up and using Hierarchy Authorizations please refer to the document “How to Work with Hierarchy Authorizations”.**

Where authorization access is to be controlled via reporting authorizations in the BW one should attempt to identify those specific characteristics which can best be utilized to obtain the required level of control. The fewer characteristics for which authorization restriction is required the less ongoing maintenance. **As a guide always try to keep authorization definition as simple as possible.**

1.2 BPS Specific Authorizations.

The following special authorization objects exist for SEM Business Planning and Simulation. It should be noted that hierarchical relationships exist between the various authorization objects. Please refer to the SEM-BPS on-line documentation for further details.

R_AREA: You use this authorization object to control access to planning areas and all subordinate objects. You must set up read access to planning areas for people who will work with the SEM-BPS component. Otherwise, they cannot access any of the subordinate planning elements.

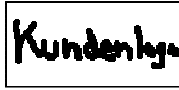
R_PLEVEL: You use this authorization object to control access to planning areas and all subordinate objects. This authorization object is also relevant for accessing documents of the SEM-BIC component.

R_PACKAGE: You use this authorization object to control access to planning packages (including ad hoc packages).

R_METHOD: You use this authorization object to control access to planning functions and the appropriate parameter groups.

R_PARAM: You use this authorization group to control access to individual parameter groups of a certain planning function.

R_BUNDLE: You use this authorization object to control access to global planning



Sequences (you control authorizations for planning sequences, which you create for a Planning level, with the authorization objects R_METHOD, R_PLEVEL or R_AREA).

R_PROFILE: You use this authorization object to control access to planning profiles. A Planning profile restricts the objects that can be viewed. If you wish to view the planning Objects, you must have at least display authorization for the appropriate planning profile.

R_PM_NAME: You use this authorization object to control access to planning folders. In order to be able to work with planning folders; you require in addition the necessary authorizations for the planning objects combined in the folder.

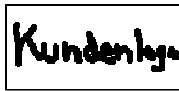
R_WEBITF: You use this authorization object to control access to Web interfaces, which you create and edit with the Web Interface Builder, and from which you can generate Web-enabled BSP applications.

R_STS_PT: You use this authorization object to control access to the Status and Tracking System. The object enables the check whether a user is allowed access to a certain sub plan or a version of it with the Status and Tracking System.

R_STS_CUST: You use this authorization object to control access to Customizing for the Status and Tracking System. The object enables or forbids a user to execute Customizing.

R_STS_SUP: This authorization object provides the assigned users with the status of a super user in relation to the Status and Tracking System. The object enables changing access to all plan data – independent of whether and where a user of the cost center hierarchy it is based on is assigned. The authorization object is intended for members of a staff controller group, who are not part of the line organization [Extern] of the company, but who nevertheless must be able to intervene in the planning process.

1.3 BW Reporting Authorizations:



For further details on authorization control via BW reporting please refer to the BW online documentation.

1.4 Planning Profiles:

Planning Profiles set up a user/role specific selection of planning objects, which effectively allow a user to work with a defined sub-set of objects directly related to the task, which he is currently performing. (IE Capital Project Planning for Eastern Regions). This can significantly simplify use of the system through only displaying those objects, which are required to carry out a certain type of planning.

The ability to be able to select and utilize a specific Planning Profile can be controlled via authorizations.

It should be noted however, that Planning Profiles in and of themselves are NOT authorizations. A user has the option to either work within a profile for which he has authorization (as noted above) or alternately he has the option to work with all planning objects, in which case there is no longer any restriction imposed via Profiles.

Creation of User Specific Work lists via the user of Variables

Although the creation of user specific work lists, via the use of variables, is not technically tied to the authorizations concept (with the exception of replacement type "Authorization" discussed below) it can still be utilized to control the scope for action which employees have when executing planning activities. This functionality can significantly reduce the number of planning objects which otherwise might need to be set up and maintained.

Key to this concept is the use of variables with replacement type User-Specific Values.

These variables provides for the ability to centrally create and control the generation of work-lists by employee, automatically controlling the characteristic values available to a user when carrying out planning processes.

For further details refer to the SEM-BPS online documentation under Variable for Definition of Work lists.

It should be noted that access control via the use of variables/work lists is performed on a user-by-user basis as opposed to roles or profiles, which are the basis for standard authorization definition.

1.5 Worklists/Variables – Replacement Type "Authorization"

When a variable is utilized within SEM-BPS with the replacement type "Authorization", the system automatically determines the characteristic values, which will be made available to the user for further processing within BPS based on his BW reporting authorizations.

Provided that you use BW reporting authorizations in your system, the use of variables with replacement type "Authorization" has the great advantage of ensuring that reporting authorizations are fully consistent with authorizations in planning. This can significantly simplify design and ongoing maintenance.

An example of where this type of variable can be used very effectively is where the Cost Centers which a user should have access to when planning correspond to the Cost Centers the user has been granted access to report upon in the BW. In such a case, by utilizing a variable for Cost Center, with replacement type "Authorization" in a planning level, the system will automatically select those Cost Centers for

\\Dwdf207\smp2sdn_migr\SMP_BI~1\SAPNET~1\PRODUC~2\SAPBW3~1.5\SAPBWB~1\IMPLEM~1\SEM- 6
BP~1\Business Blueprint_ Authorisations Guide.E.DOC



processing which correspond with the Cost Centers which the user has authorization to report upon.

1.6 Implementing Authorizations within SEM-BPS.

1.6.1 Overview

In accordance with standard SAP authorization concepts the concept of roles should be utilized in attempting to define authorization requirements. Examples of roles might include Planning Administrator (Full access capabilities), Analyst (Detailed Users), Departmental Managers (Limited Planning/Reporting for responsible Cost Centers) etc. These may then be further broken down into sub-groupings by for example Region, Division etc. if this is necessary.

Guidelines

- Start to consider the authorization requirements as soon as possible during the project. They can have a significant impact on the overall system design.
- Keep the requirements as simple as possible. Complex authorization requirements imply complex authorization design, which will not only increase implementation effort but can result in significant additional ongoing maintenance.
- Always consider whether or not the same level of authorization is required over the ability to change (write) as to display (read only).
- Develop an authorization strategy.
- Establish appropriate name conventions.

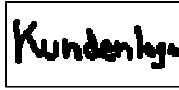
1.6.2 Macro Roles

It is possible to generally define certain major categories of BPS users. These categories will be called “Macro Roles”. Utilizing an approach of identifying each these Macro Roles and developing a standard template, as a starting point for further refinement, can often be an effective approach to definition of authorizations. Certain Macro Roles might include for example:

MACROROLE	
Planning Administrator	
BW system Administrator	
Primary User Groups. IE: Sales Planning, Cost Control, Capital Planning	Divisional Analysts
	Managers
	Field Personnel

1.6.3 Authorization specification and design tasks during the SEM project

Set out below are recommended tasks to be performed, related to authorizations during each phase of implementation.



1.6.3.1 Business Blueprint

During the Business Blueprint phase there are three tasks concerning authorizations:

- *Role identification.* The first step during the business blueprint phase is to identify specific roles (i.e. Macro-Roles) related to the Planning and Reporting process.
- *First identification of the authorization relevant objects (in particular the BPS specific authorization objects) and characteristics.*
- *Definition of an authorization strategy.* This would include:
 - 1. Identify a consistent approach to authorization requirement collection and level of detail required.
 - 2. Initial determination of the level of authorizations, which is required and can be practically supported.
 - 3. Conceptual approach to be utilized in the implementation of Planning Authorizations. (I.E. Will authorizations be implemented via the use of the Planning Framework utilizing BPS specific authorization objects as far as possible or is the approach to be simplification of the framework to the greatest extent possible via the use of BW Reporting authorizations). It needs to be clearly defined what conceptual design in terms of the planning framework is required and what key BW reporting objects will be utilized for purposes of access control during this phase.

1.6.3.2 Realization

During realization the following activities need to occur:

- Detailed authorization requirements collection;
- Detailed authorization design / construction (reporting object, authorization and profiles design);
- Authorization implementation including integration testing.

1.6.3.3 Final preparation

During the final preparation phase final testing of authorizations for all key user roles.

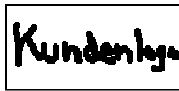


FIG. 1 – maps of authorization related tasks

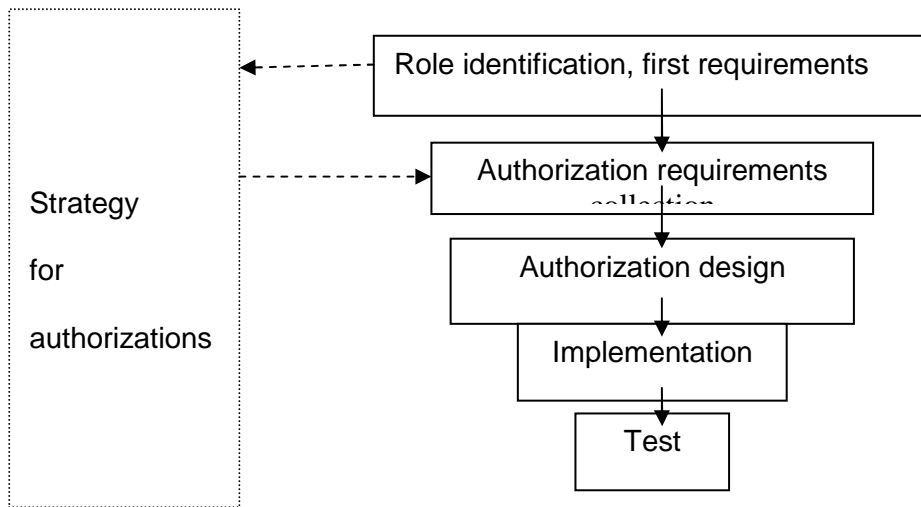


FIG. 2 – authorization tasks and templates in the ASAP for BW Roadmap

Phase	Tasks
Project preparation	
Business Blueprint	Role identification
	First identification of the authorization relevant characteristics
	Definition of an authorization strategy
Realization	Collection of authorization requirements at the chosen level of detail
	Profile design
	Authorization implementation
Final preparation	Final Test of authorizations. Creation of Users in Production Environment.
Go live and support	