

Calling Web Services in Interactive Adobe Forms



Applies to:

This document applies to SAP ECC 6.0, SAP Netweaver 2007 and above. For more information, visit the [SAP Interactive Forms By Adobe homepage](#)

Summary

Sample application to call web service in Adobe forms for Web Dynpro ABAP

Author: Shaira Madhu

Company: Appexus Technologies pvt Ltd.

Created on: 27 June 2011

Author Bio

Shaira Madhu is working as SAP Technology Consultant with Appexus Software Solutions (P) Ltd.

Table of Contents

Introduction	3
Web Service Creation	3
Web Dynpro Component Creation	10
Related Content	16
Disclaimer and Liability Notice	17

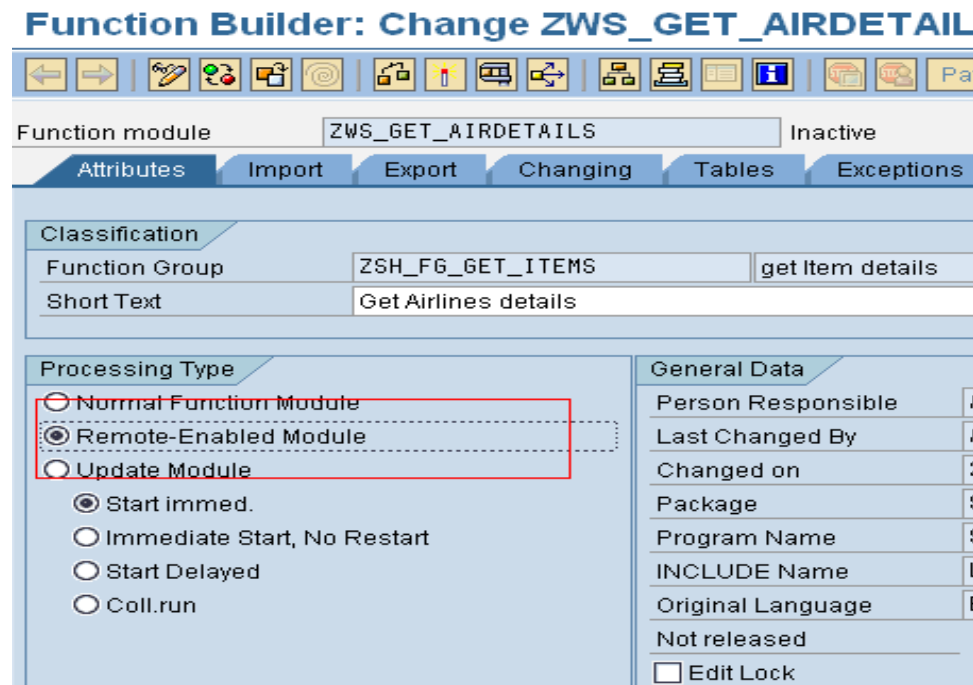
Introduction

An interactive adobe forms can call web services in both online and offline scenario. This is a simple application that shows how to call a web service in interactive adobe forms.

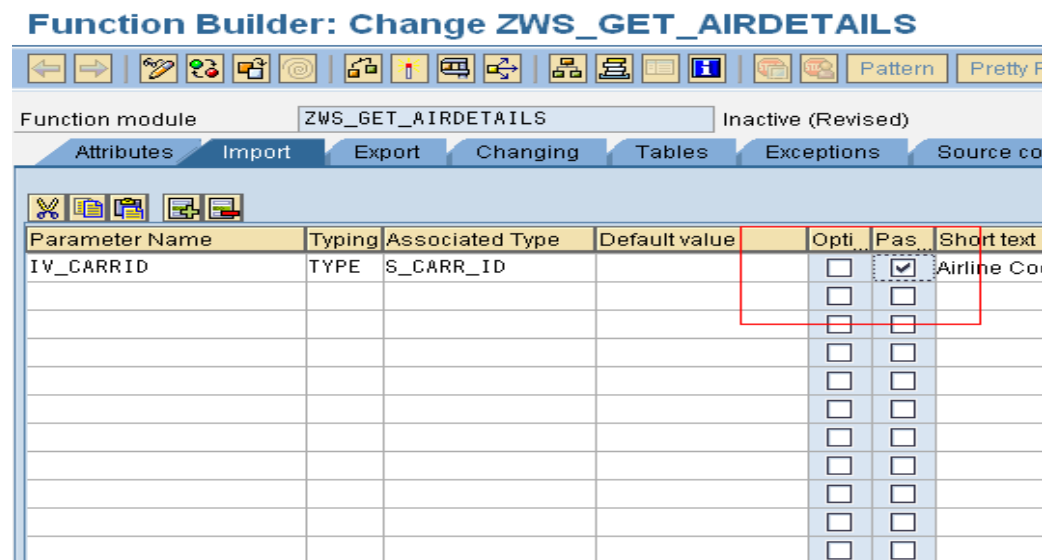
Web Service Creation

Here we are creating a function module. This function will get the Airline code (carrid) and returns Airlines details like airline name, URL, local currency. Let's say 'ZWS_GET_AIRDETAILS' as function module name.

Crte the function module as RFC enabled as shown below.



Enter the import parameter IV_CARRID with type S_CARR_ID Check pass value under the 'Import' tab as shown below.



Give Export parameters

EV_CARRNAME type S_CARRNAME

EV_CURRCODE type S_CURRCODE

EV_URL type S_CARRURL

Refer the screen shot below.

Parameter Name	Typing	Associated Type	Pass Val	Short text
EV_CARRNAME	TYPE	S_CARRNAME	<input checked="" type="checkbox"/>	Airline name
EV_CURRCODE	TYPE	S_CURRCODE	<input checked="" type="checkbox"/>	Local currency of air
EV_URL	TYPE	S_CARRURL	<input checked="" type="checkbox"/>	Airline URL
			<input type="checkbox"/>	
			<input type="checkbox"/>	
			<input type="checkbox"/>	

Enter the source code as given below.

```
Select SINGLE CARRNAME CURRCODE URL FROM scarr
into (EV_CARRNAME, EV_CURRCODE ,EV_URL ) WHERE carrid = iv_carrid.
```

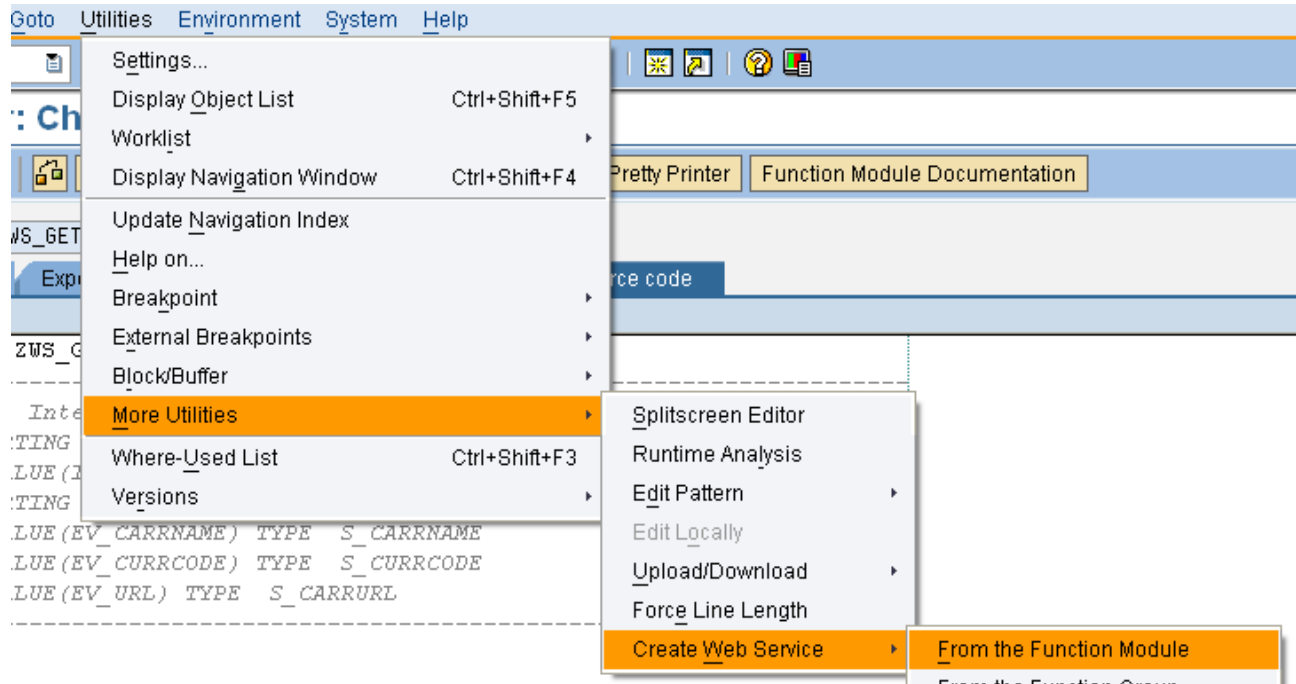
```

1  FUNCTION ZWS_GET_AIRDETAILS.
2  "-----
3  " "Local Interface:
4  "   IMPORTING
5  "     VALUE (IV_CARRID) TYPE S_CARR_ID
6  "   EXPORTING
7  "     VALUE (EV_CARRNAME) TYPE S_CARRNAME
8  "     VALUE (EV_CURRCODE) TYPE S_CURRCODE
9  "     VALUE (EV_URL) TYPE S_CARRURL
10 "-----
11
12
13  select SINGLE CARRNAME CURRCODE URL FROM scarr
14  into (EV_CARRNAME, EV_CURRCODE ,EV_URL ) WHERE carrid = iv_carrid.
15
16  ENDFUNCTION.

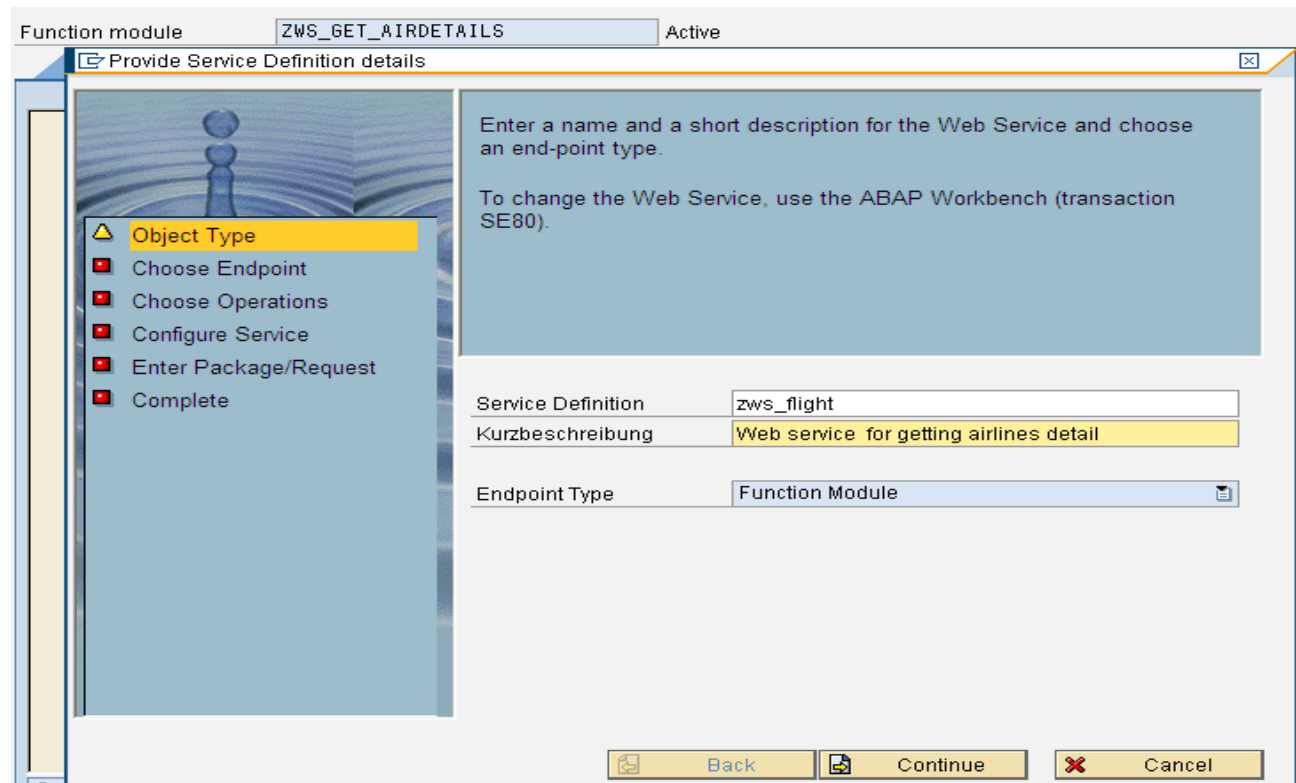
```

Save and activate the Function module.

To create web service of the function module take Utilities->More Utilities->Create Web Service.



We will get a wizard for creating a web service. Enter the name and short description for web service. Select Endpoint type as Function Module. Please refer the below screen shot. Click Continue button.



Function Builder: Change ZWS_GET_AIRDETAILS

Function module: **ZWS_GET_AIRDETAILS** Active

Choose Endpoint

Enter the name of the function module that is to be offered as a Web Service.

If you select the checkbox <ZKName Mapping, the existing descriptions of the end point elements are copied. Initial letters are capitalized and underscores removed.

Function Module: **ZWS_GET_AIRDETAILS**

Mapping der Namen

Back Continue Cancel

Function module: **ZWS_GET_AIRDETAILS** Active

Configure Service

Choose a profile for Security Settings.

Remember that the service does not have any runtime configuration and therefore cannot be used. Create the Web service configuration in the NetWeaver Administrator (transaction WSADMIN2).

SOAP Application: **soap:runtime:application:rfc:710**

Profile: **PRF_DT_IF_SEC_LOW**

Authentication with User and Password, No Transport Guarantee

Deploy Service

Back Continue Cancel

Save it as local object.

Function module: ZWS_GET_AIRDETAILS Active

Enter Package/Request

Enter the name of the package and transport request.

- Object Type
- Choose Endpoint
- Configure Service
- Enter Package/Request**
- Complete

Package/Request

Package	\$TMP
Transport Request	

Local Object

Back Continue Cancel

Click complete

Function module: ZWS_GET_AIRDETAILS Active

Complete

The Web Service **zws_flight** will be created.

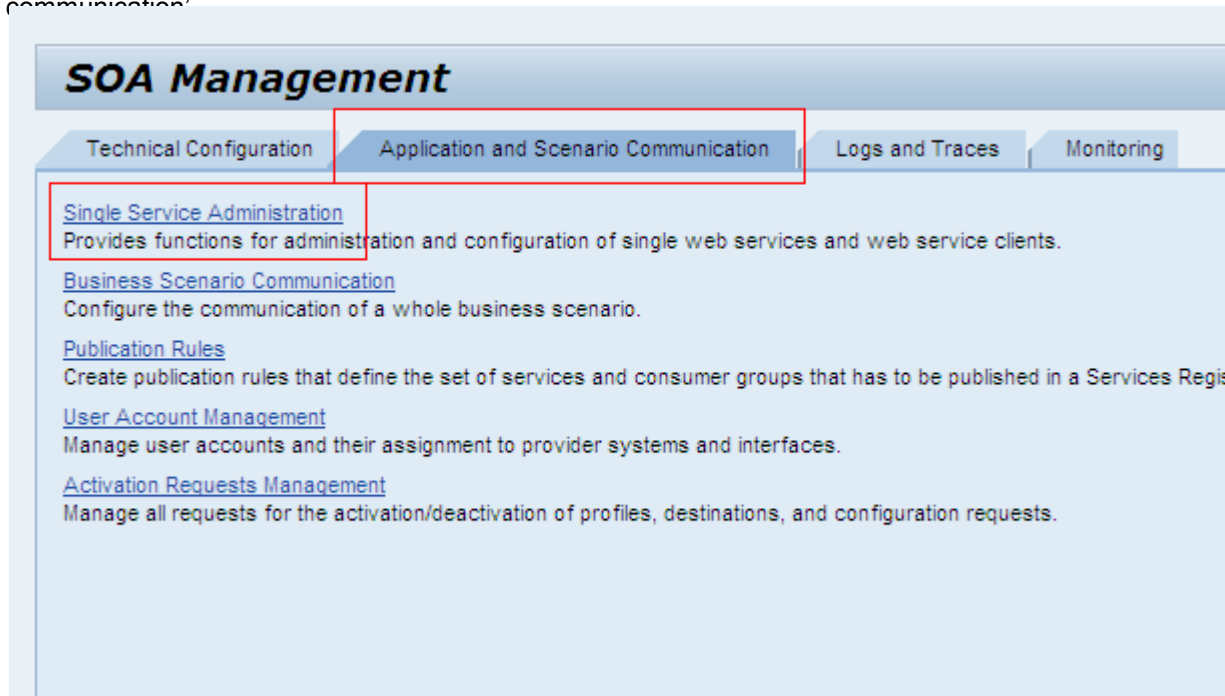
Note that the service does not have any runtime release and therefore cannot be used. This can be created in Transaction WSCONFIG.

After this, the transaction WSADMIN (*Administration Web Services for SOAP Runtime*) will support you with the UDDI registration task for the Web service.

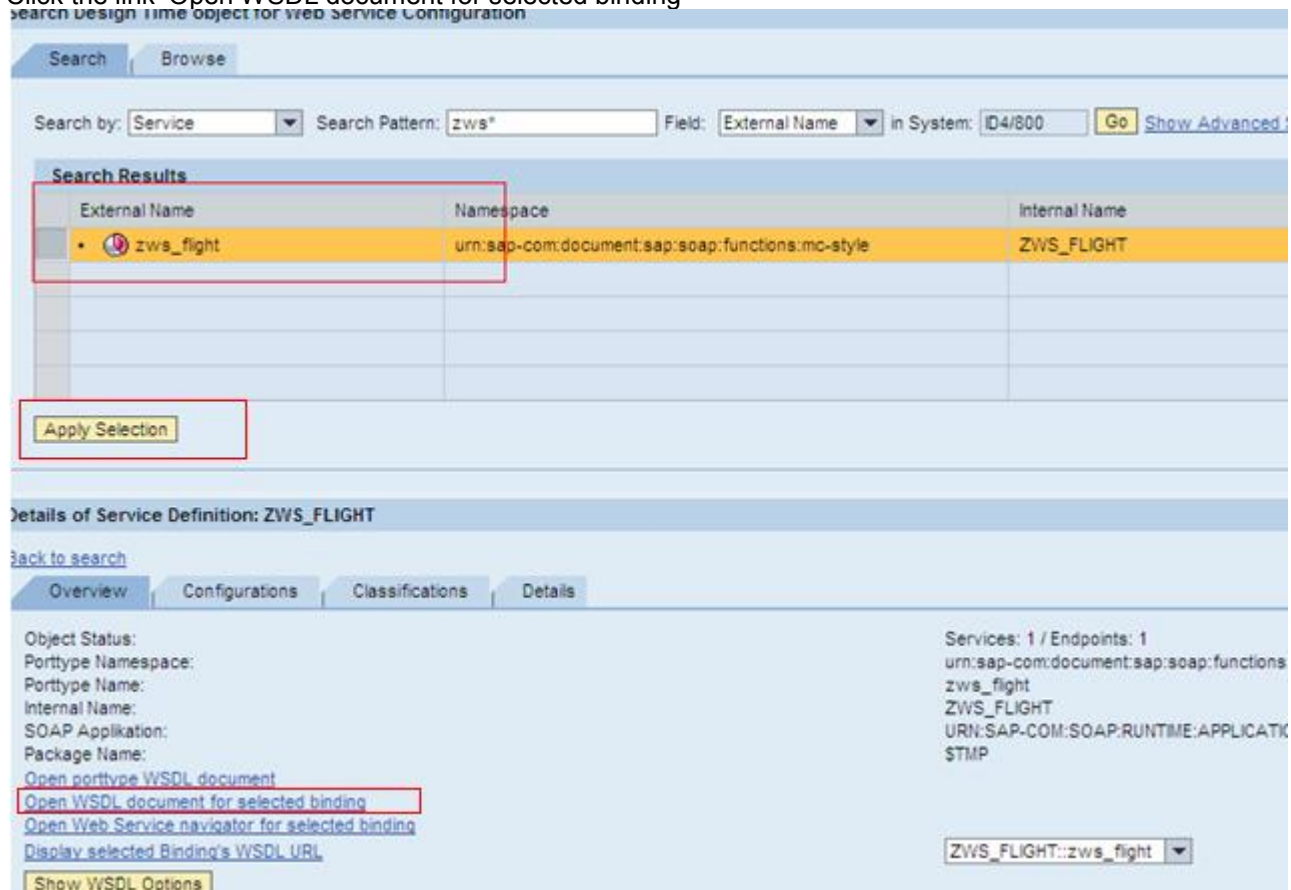
- Object Type
- Choose Endpoint
- Configure Service
- Enter Package/Request
- Complete**

Back Complete Cancel

Execute the Tcode 'SOAMANAGER' to down load the WSDL file of the created web service. This will open a browser. Click the link 'Single Service Administration' under the tab 'Application and Scenario communication'



Search the web service and select the particular row for our web service. Click the button 'Apply Selection'. Click the link 'Open WSDL document for selected binding'



Check the End point is created under 'Configuration' tab. If it is not created, then we have to create an endpoint.

The screenshot shows the SAP Service Configuration interface. At the top, a table lists the service 'zws_flight' with its URI 'urn:sap-com:document:sap:soap:functions:mc-style', name 'ZWS_FLIGHT', and type 'Service'. Below this is the 'Details of Service Definition: ZWS_FLIGHT' section, which includes tabs for 'Overview', 'Configurations', 'Classifications', and 'Details'. The 'Configurations' tab is active, showing a table with columns for 'Service', 'State', 'Endpoints', and 'Creation Type'. The 'zws_flight' service is listed with an 'Active' state and 'Manually Created' type. Below this is the 'Web Service Configuration of Service Definition: ZWS_FLIGHT' section, which includes links for 'Back to Design Time Details' and 'Back to search'.

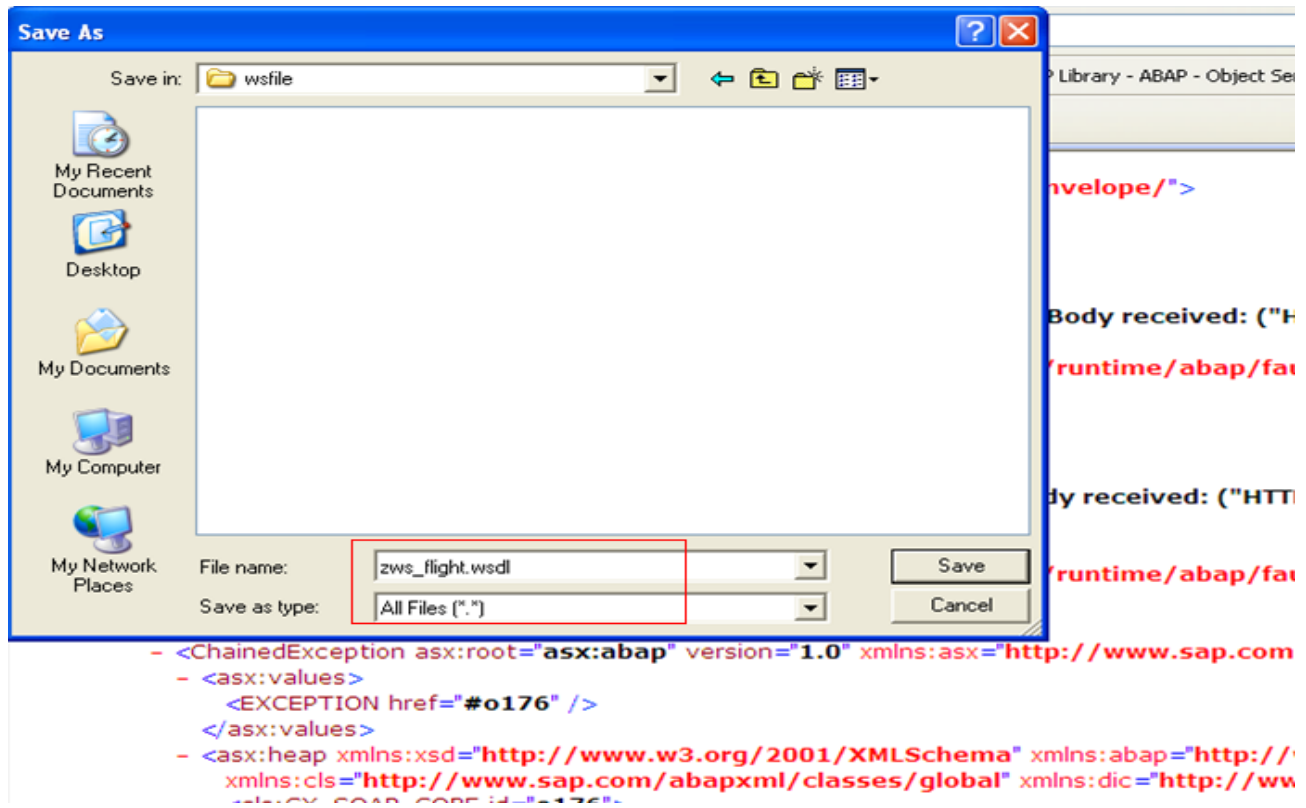
When we click on 'Open WSDL document for selected binding', it will open a browser as shown below. We can test the web service working copy the url below and open in a new browser.

```

<wsp:Policy>
  <wsp:PolicyReference URI="#IF_IF_zws_flight" />
</wsp:Policy>
<wsdl:operation name="ZwsGetAirdetails">
  <wsp:Policy>
    <wsp:PolicyReference URI="#OP_IF_OP_ZwsGetAirdetails" />
  </wsp:Policy>
  <wsdl:input message="tns:ZwsGetAirdetails" />
  <wsdl:output message="tns:ZwsGetAirdetailsResponse" />
</wsdl:operation>
</wsdl:portType>
<wsdl:binding name="zws_flight" type="tns:zws_flight">
  <wsp:Policy>
    <wsp:PolicyReference URI="#BN_BN_zws_flight" />
  </wsp:Policy>
  <soap:binding transport="http://schemas.xmlsoap.org/soap/http" style="document" />
  <wsdl:operation name="ZwsGetAirdetails">
    <soap:operation soapAction="" style="document" />
    <wsdl:input>
      <soap:body use="literal" />
    </wsdl:input>
    <wsdl:output>
      <soap:body use="literal" />
    </wsdl:output>
  </wsdl:operation>
</wsdl:binding>
<wsdl:service name="ZWS_FLIGHTService">
  <wsdl:port name="zws_flight" binding="tns:zws_flight">
    <soap:address location="http://seasrv03:8000/sap/bc/srt/rfc/sap/zws_flight/800/zws_flight/zws_flight" />
  </wsdl:port>
</wsdl:service>
</wsdl:definitions>

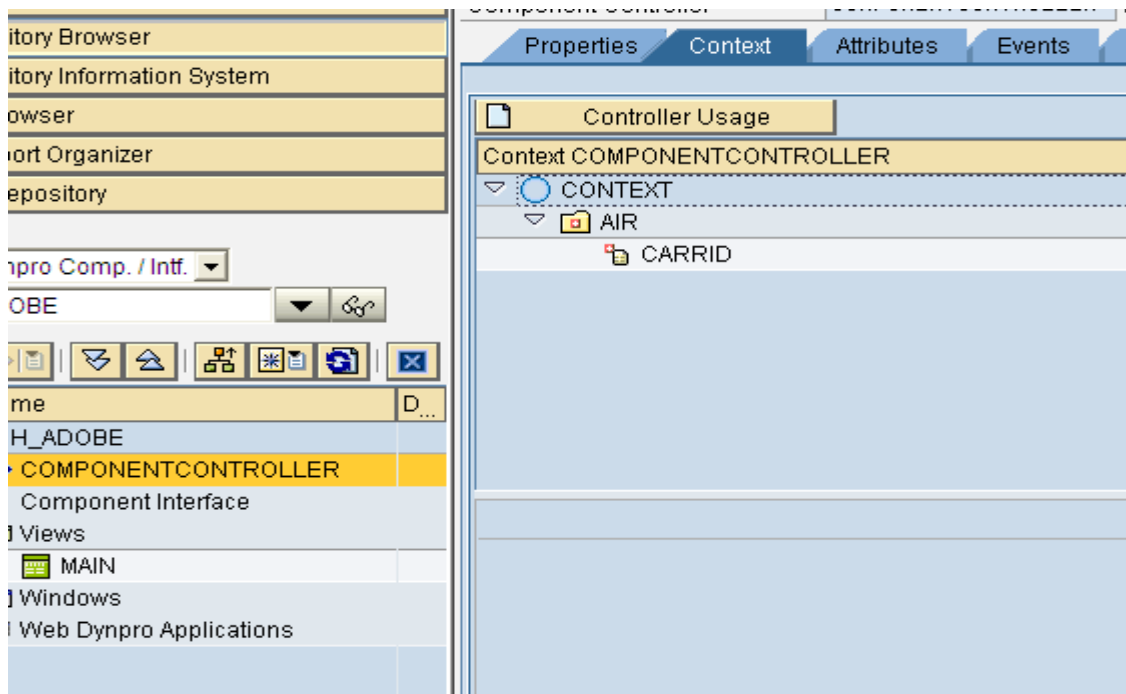
```

Save the file with extension 'WSDL'.

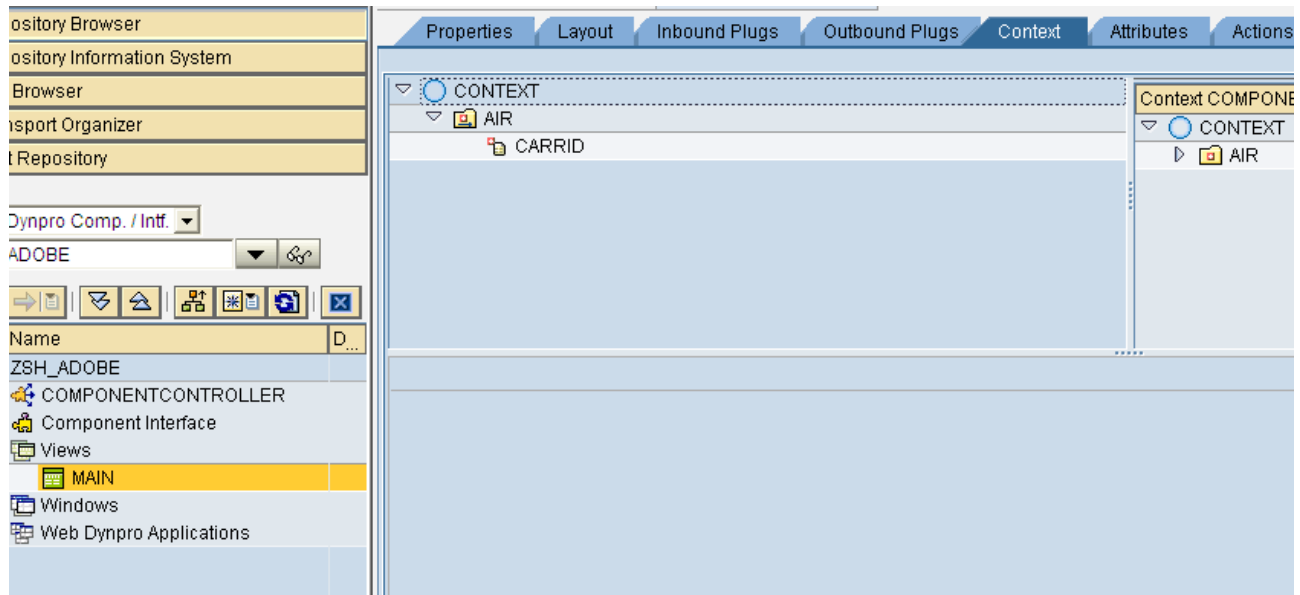


Web Dynpro Component Creation

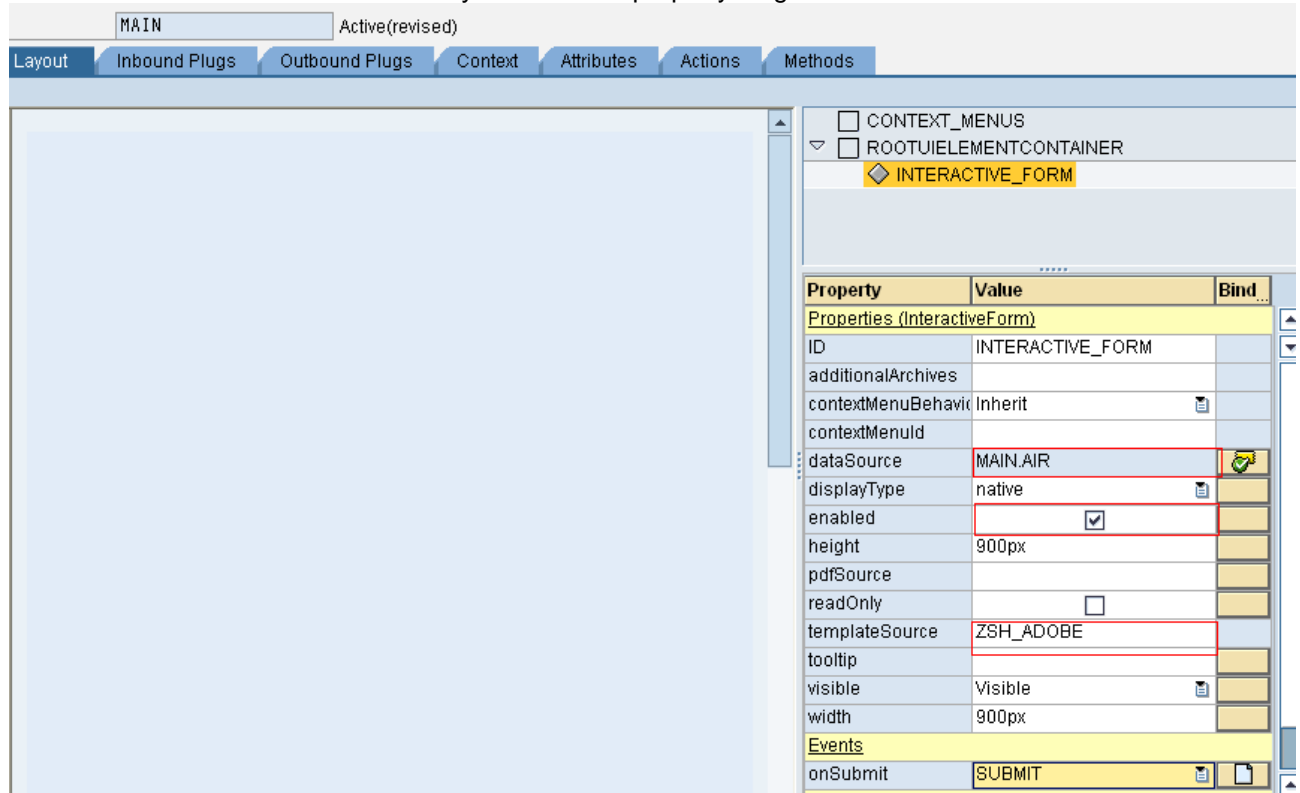
Create a Web Dynpro component. Create a node in Component controller (cardinality 0:1), as given below. Add one attribute carrid (type S_CARR_ID).



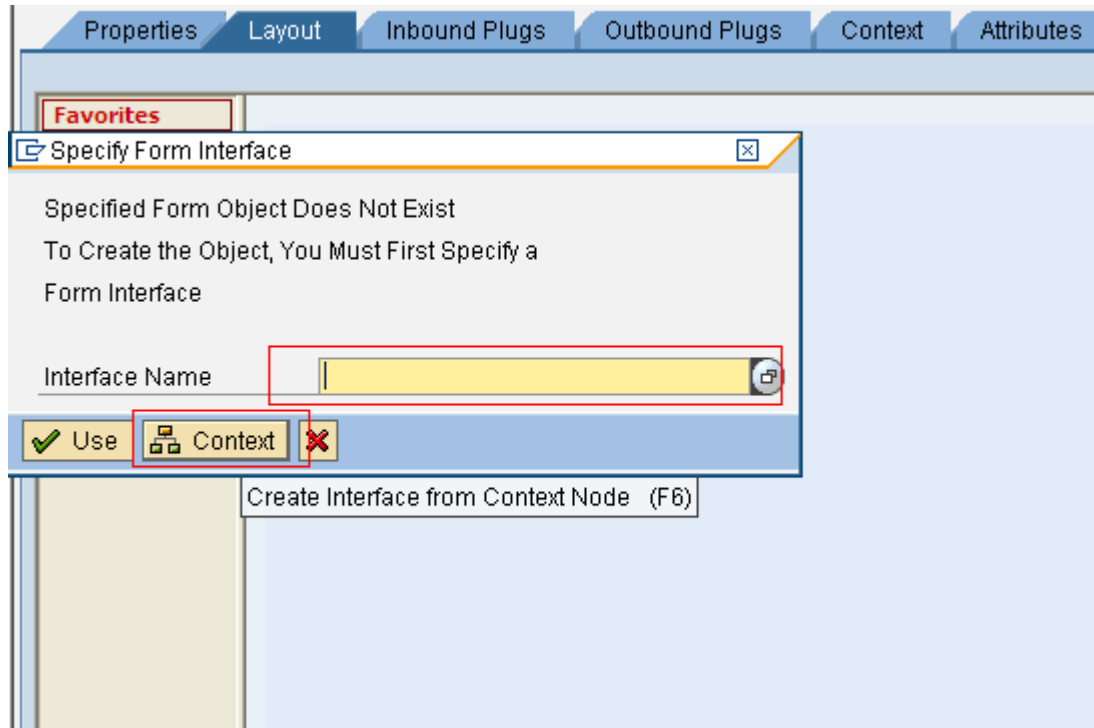
Map this node to view controller.



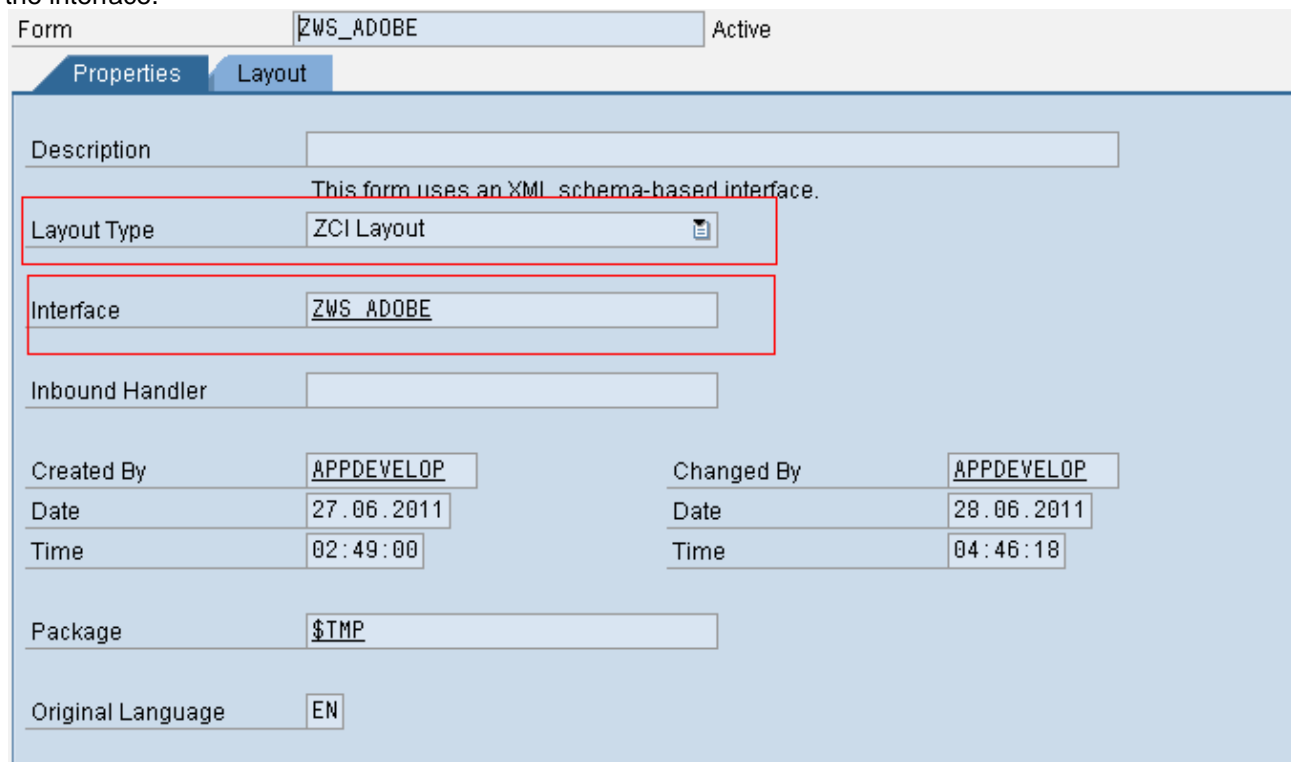
Add UI Element 'Interactive Form' in layout. Give the property as given below. Bind the data to node AIR.



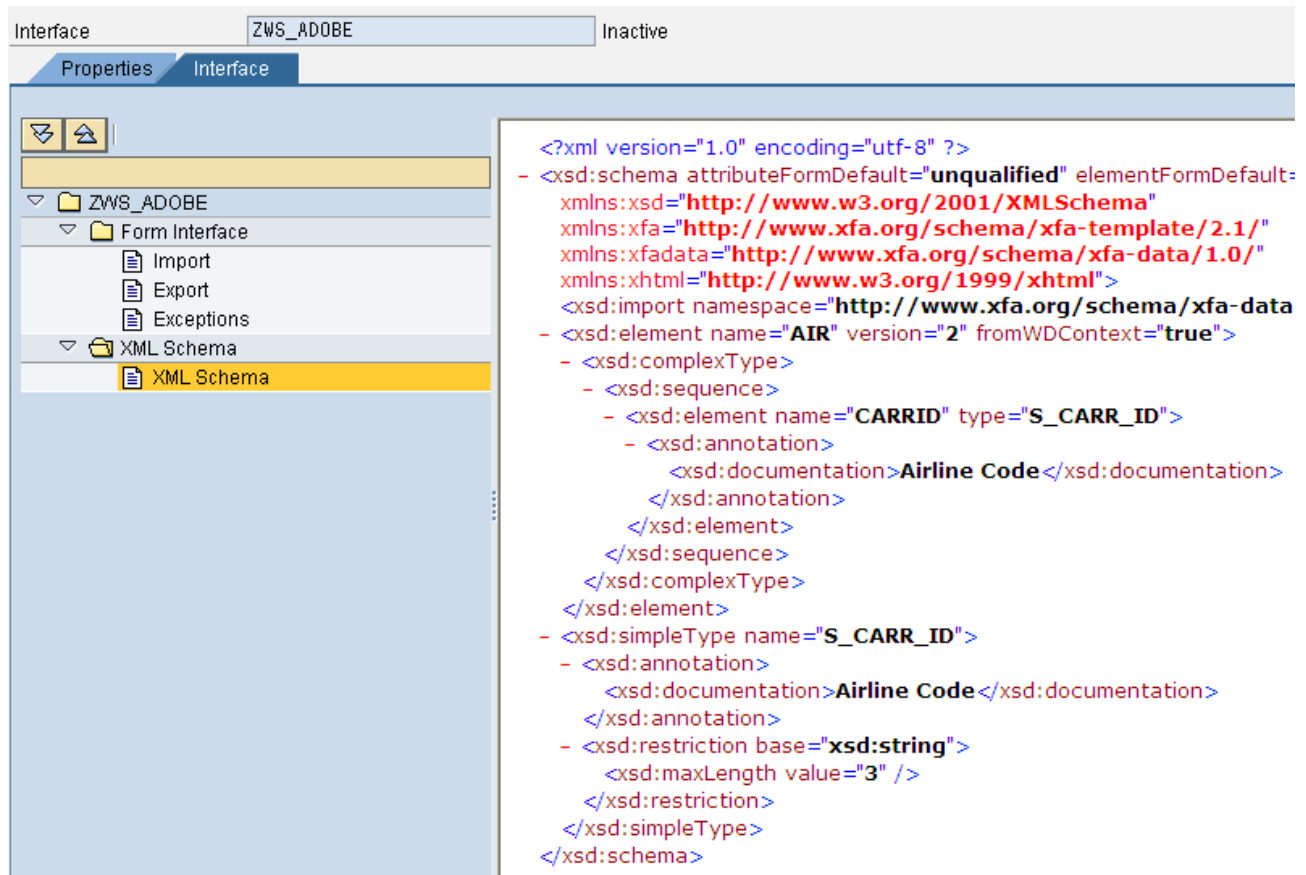
Double click the entry for 'templateSource' in the properties. A popup window will come. Enter the interface name. Select the context node by click the 'Context' button. Select the node AIR. Click Use.



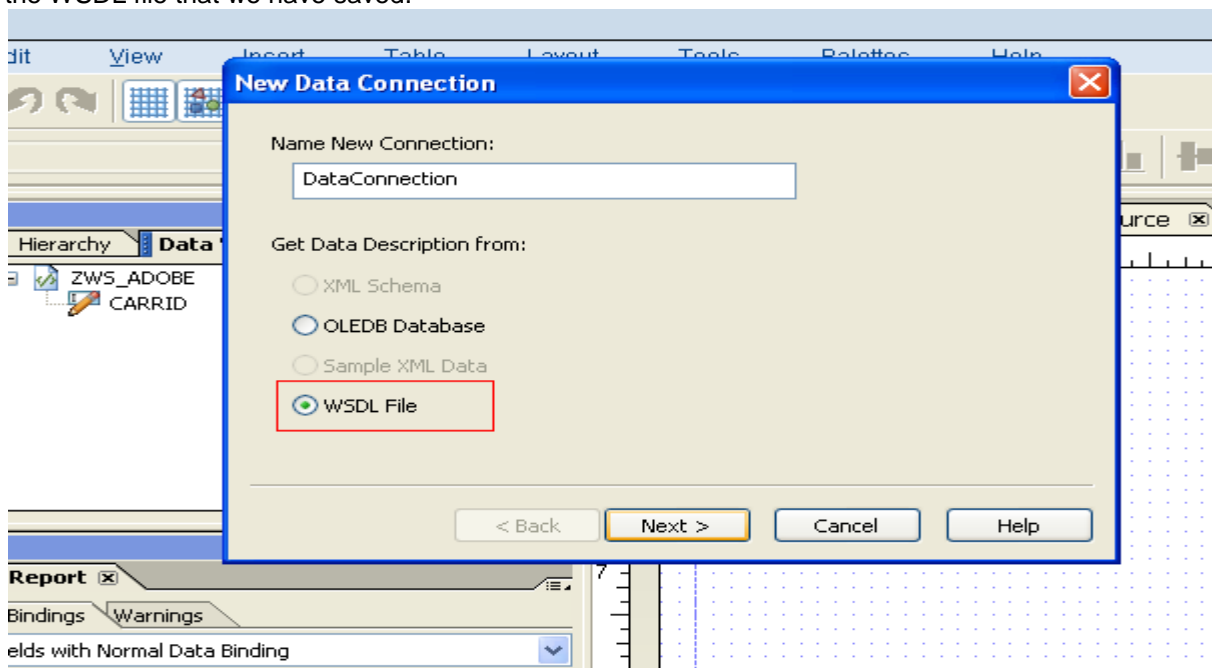
A new form will be loaded. Change the layout type to ZCI Layout. Double click the interface name and go to the interface.



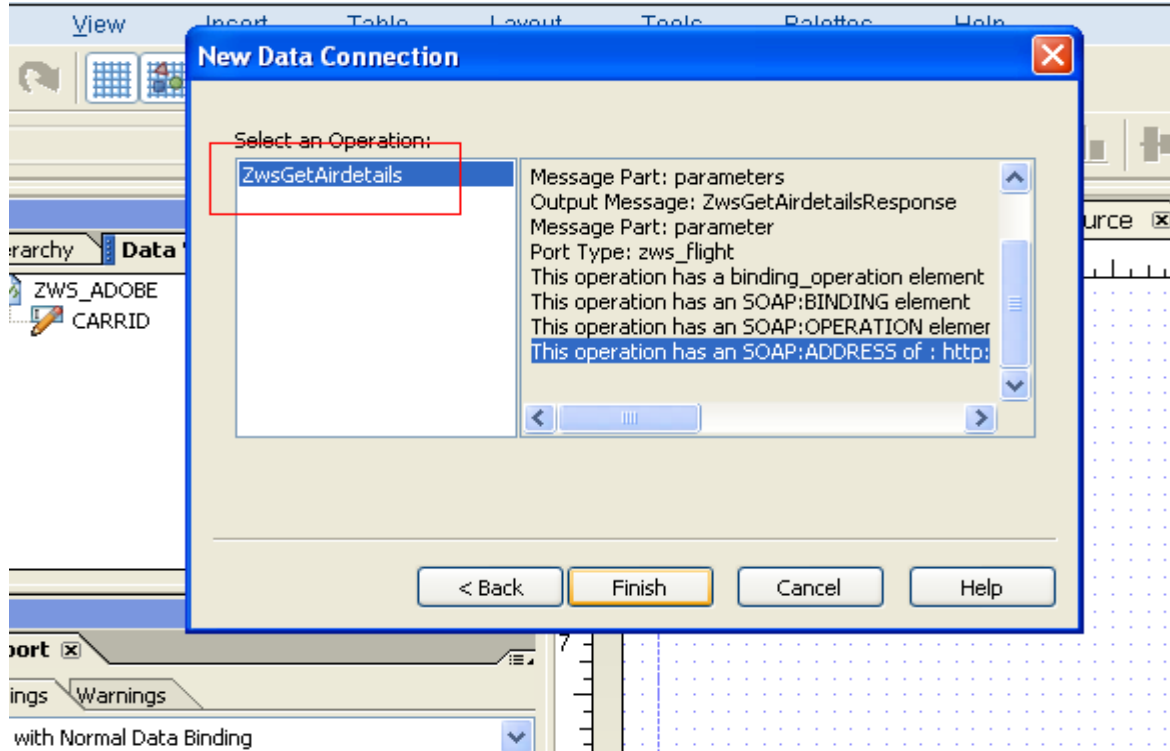
Activate and save the interface and come back to the form.



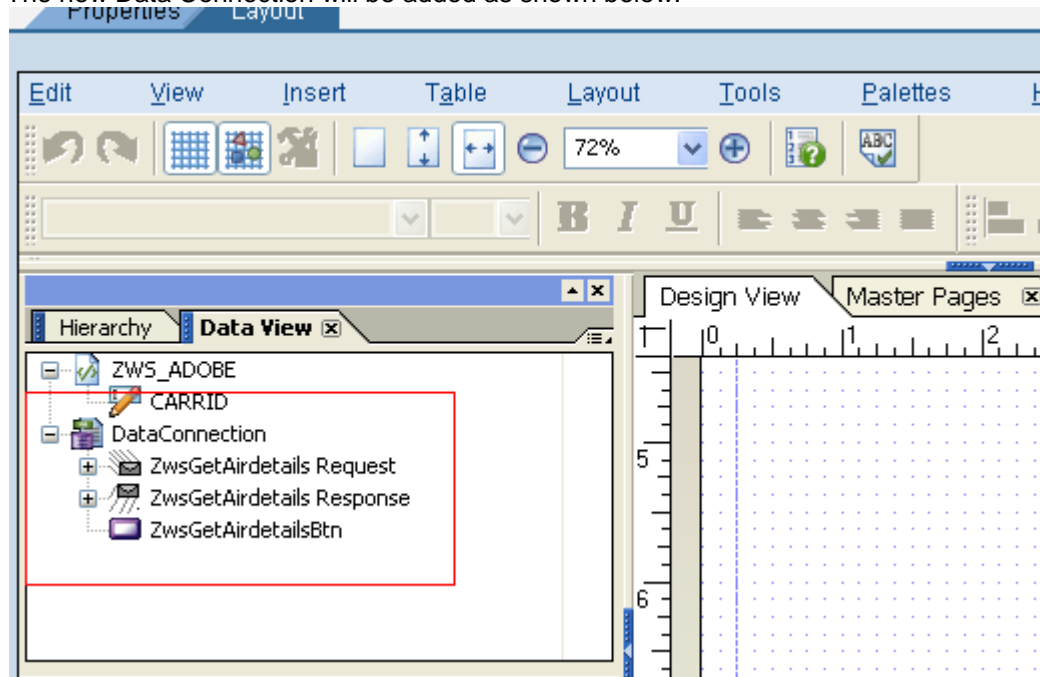
In order to add the web service in the form, right click the main node under tab Data view. Select 'New Data Connection...' A new popup window will come as shown below. Select 'WSDL' File. And click next. Upload the WSDL file that we have saved.



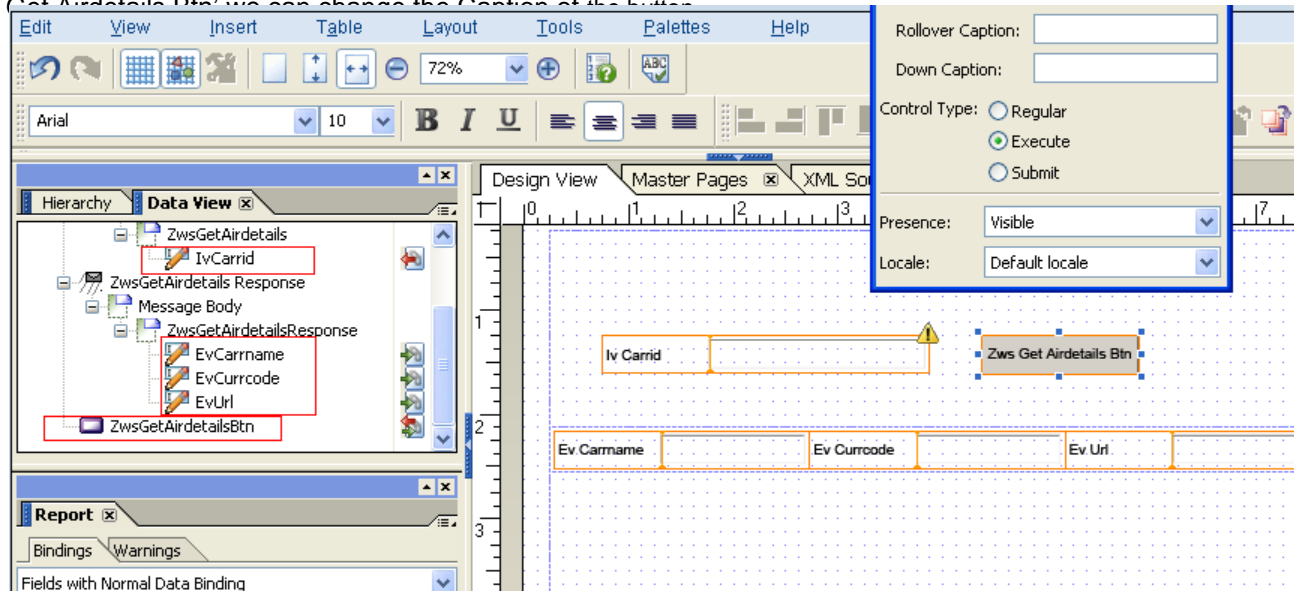
Click the Finish button as shown below.



The new Data Connection will be added as shown below.

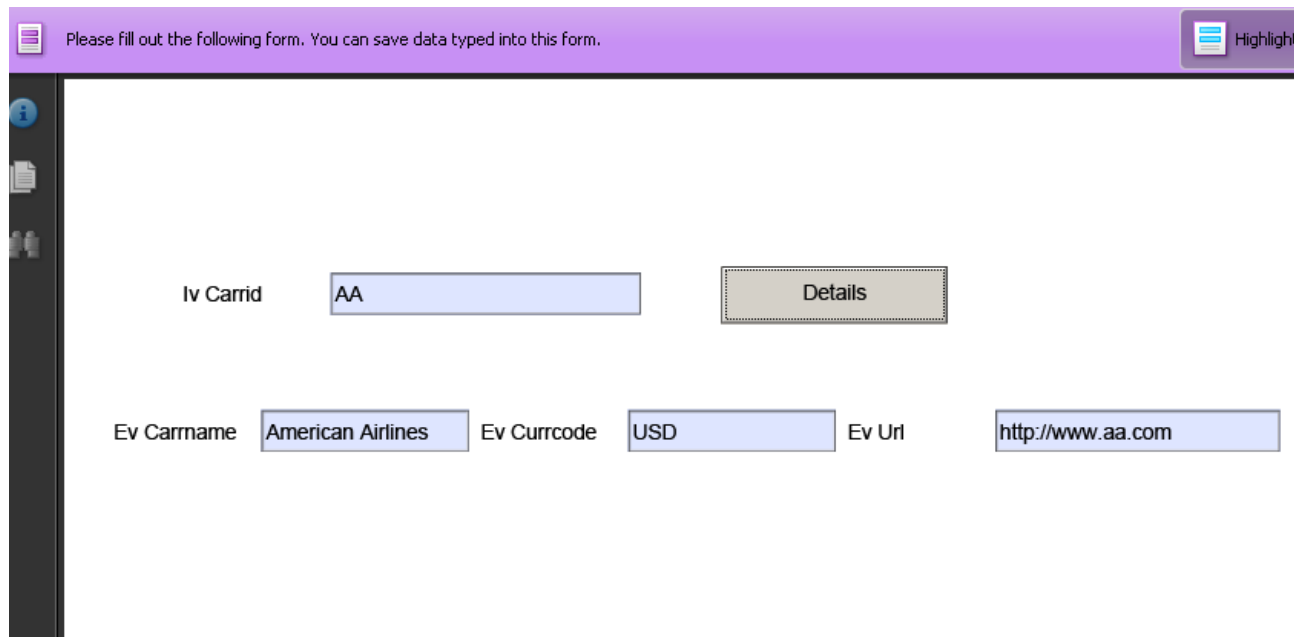


Drag and drop the node as given below. The Web service will be called when the user click the button 'Zws Get Airdetails Btn'



Activate and save the Form and web Dynpro Component. Create an application for web Dynpro. And execute it. Enter a valid value for carriid and click the button that calls web service. The web service will return Carrier name, currency and URL.

Download the form as pdf file. It will work in both offline and online scenarios.



Related Content

[SAP Interactive Forms by Adobe FAQs](#)

[Web Dynpro ABAP](#)

[Adobe interactive forms in webDynpro ABAP](#)

For more information, visit the [SAP interactive Forms by Adobe](#).

Disclaimer and Liability Notice

This document may discuss sample coding or other information that does not include SAP official interfaces and therefore is not supported by SAP. Changes made based on this information are not supported and can be overwritten during an upgrade.

SAP will not be held liable for any damages caused by using or misusing the information, code or methods suggested in this document, and anyone using these methods does so at his/her own risk.

SAP offers no guarantees and assumes no responsibility or liability of any type with respect to the content of this technical article or code sample, including any liability resulting from incompatibility between the content within this document and the materials and services offered by SAP. You agree that you will not hold, or seek to hold, SAP responsible or liable with respect to the content of this document.