

How to Trigger Workflow from Web Dynpro ABAP – Part 2



Applies to:

This document applies to Web Dynpro ABAP, SAP ECC 6.0 and above. For more information, visit the [Web Dynpro ABAP homepage](#).

Summary

This Article helps how to Trigger Workflow from Web Dynpro ABAP Application.

Author: V Kiran Kumar Reddy

Company: Enteg Infotech

Created on: 02 July 2011

Author Bio

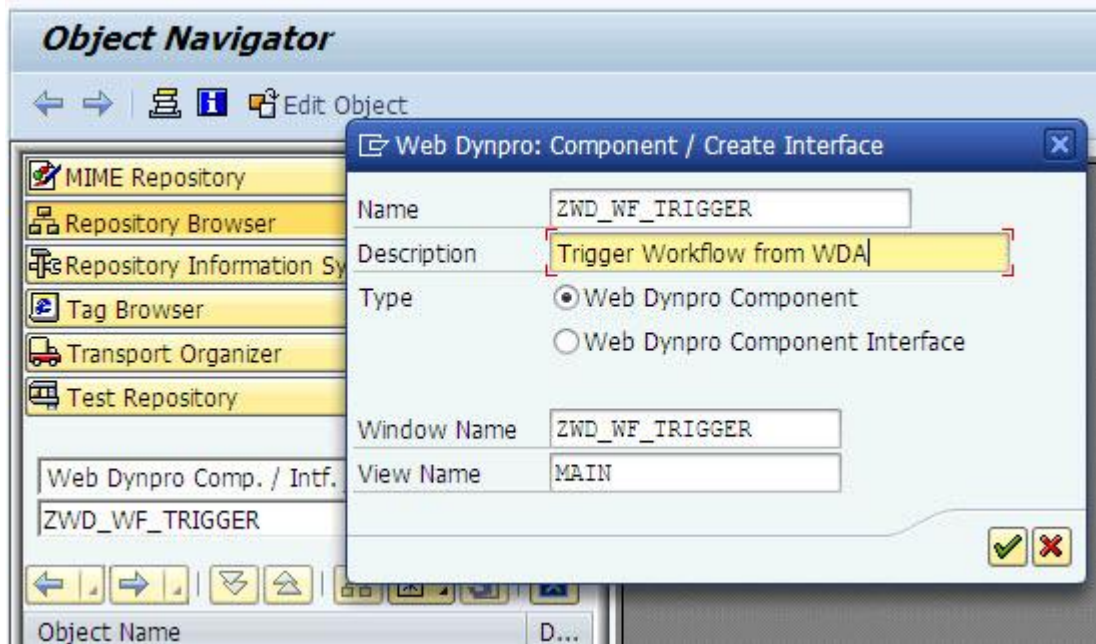


V Kiran Kumar Reddy is working in Enteg Infotech, Bangalore as ABAP/ Web Dynpro ABAP Developer Trainee. He is very much interested in Web Dynpro ABAP and ABAP.

Table of Contents

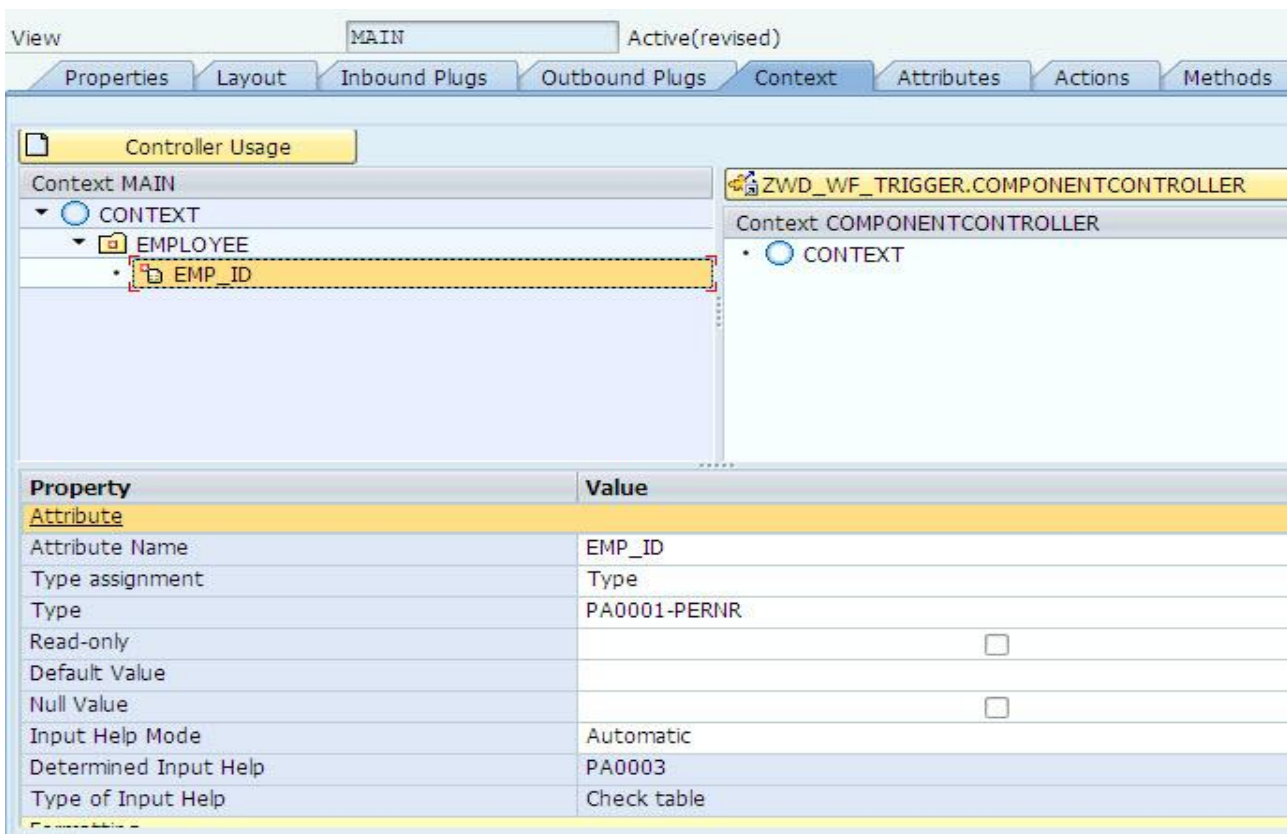
Introduction	3
Triggering Workflow from Web Dynpro ABAP	3
Step 1: Create a Web Dynpro Component	3
Step 2: Layout Design	5
Step 3: Create Application	8
Result	9
Conclusion	10
Related Content	11
Disclaimer and Liability Notice	12

Enter Description and click on ok.



Save and Activate the Web Dynpro component.

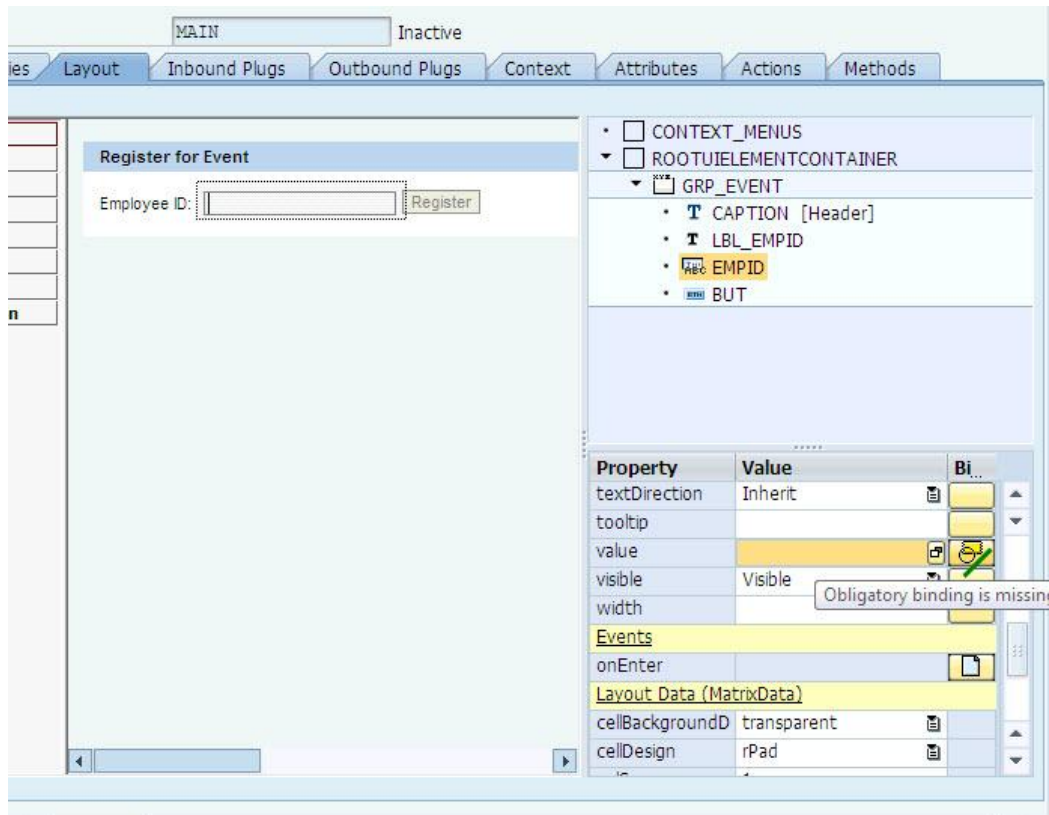
Now double click on MAIN View and go to Context tab of MAIN view. Create node EMPLOYEE with cardinality 1..1 and create an attribute EMP_ID of type PERNR under EMPLOYEE Node as shown below.



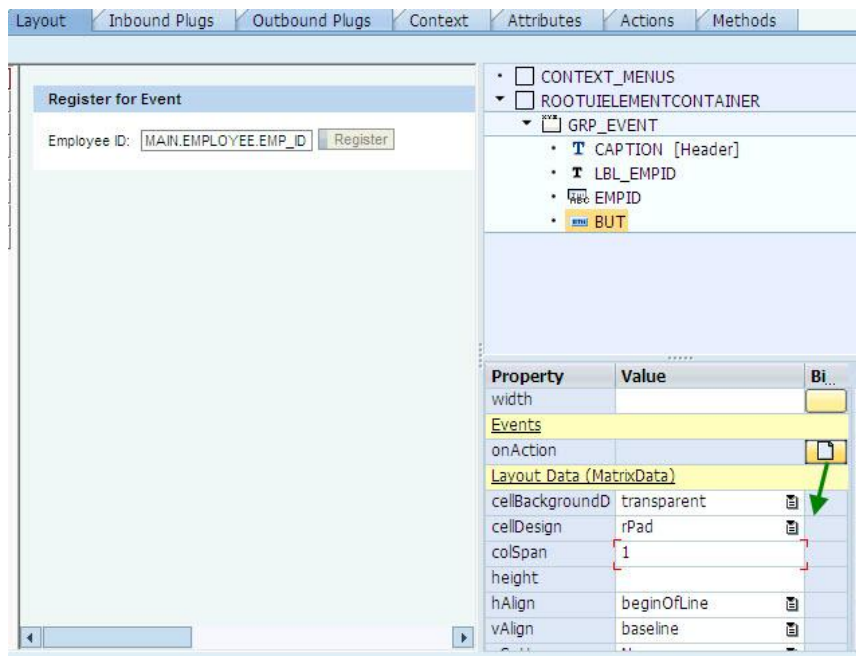
Step 2: Layout Design

Now Go to Layout tab:

1. Create label with text 'Employee ID ' and
2. Create an input field EMP_ID and bind it to EMP_ID of EMPLOYEE node.



3. Create a button with text "Register" and create an Action for the button.
4. Create a Message Area to Display message.



Enter Action Name and description and click on Ok.

Now go to Methods tab of Main View and Double click on ONACTIONREGISTER Method.

Properties Layout Inbound Plugs Outbound Plugs Context Attributes Actions Methods				
Method	Method ...	Description	Event	Controlle
ONACTIONREGISTER	Event H...	Action to register for Event		
WDDOAFTEACTION	Method	Method for non-action specific operations b...		
WDDOBEFOREACTION	Method	Method for Validation of User Input		
WDDOEXIT	Method	Controller Clean-Up Method		
WDDOINIT	Method	Controller Initialization Method		
WDDOMODIFYVIEW	Method	Method for Modifying the View Before Rend...		
WDDOONCONTEXTMENU	Method	Method for Modifying the Context Menu		
	Method			
	Method			
	Method			
	Method			
	Method			

Enter below Code in OnActionRegister Event.

```

method ONACTIONREGISTER .

* Data Declaration for Employee Node
DATA lo_nd_employee TYPE REF TO if_wd_context_node.
DATA lo_el_employee TYPE REF TO if_wd_context_element.
DATA ls_employee TYPE wd_this->Element_employee.
DATA lv_emp_id TYPE wd_this->Element_employee-emp_id.

* Data Declaration for Business Object Container and FM Parameters
DATA: OBJECT_TYPE TYPE SWR_STRUCT-OBJECT_TYP VALUE 'ZBUS593', " Bus Obj
      OBJECT_KEY TYPE SWR_STRUCT-OBJECT_KEY,
      EVENT TYPE SWR_STRUCT-EVENT VALUE 'FIRE'. " Event Name

DATA: lt_cont TYPE STANDARD TABLE OF swr_cont,
      ls_cont TYPE swr_cont.

* Data Declaration for Message Manager
DATA lo_api_controller type ref to if_wd_controller.
DATA lo_message_manager type ref to if_wd_message_manager.

* navigate from <CONTEXT> to <EMPLOYEE> via lead selection
lo_nd_employee = wd_context->get_child_node( name = wd_this->wdctx_employee ).

* get element via lead selection
lo_el_employee = lo_nd_employee->get_element( ).

* getting Employee ID
lo_el_employee->get_attribute(
  EXPORTING
    name = `EMP_ID`
  IMPORTING
    value = lv_emp_id ).

* Passing Employee ID to Business Object Container
ls_cont-element = 'EMPID'. " Parameter Name in Fire Event
ls_cont-value = lv_emp_id. " Employee ID
APPEND ls_cont to lt_cont.

* Calling Function Module to Trigger Business Object Event
CALL FUNCTION 'SAP_WAPI_CREATE_EVENT'
  EXPORTING
    OBJECT_TYPE = OBJECT_TYPE " ZBUS593
    OBJECT_KEY = OBJECT_KEY
    EVENT = EVENT " FIRE
    COMMIT_WORK = 'X'
    EVENT_LANGUAGE = SY-LANGU
    LANGUAGE = SY-LANGU
    USER = SY-UNAME
  TABLES
    INPUT_CONTAINER = lt_cont. " Business Object Container

```

```

IF sy-subrc = 0.
*   Get Message Manager
  lo_api_controller ?= wd_this->wd_get_api( ).

  CALL METHOD lo_api_controller->GET_MESSAGE_MANAGER
    RECEIVING
      MESSAGE_MANAGER = lo_message_manager.

*   report message
  CALL METHOD lo_message_manager->REPORT_SUCCESS
    EXPORTING
      MESSAGE_TEXT = 'Registered Successfully..'.

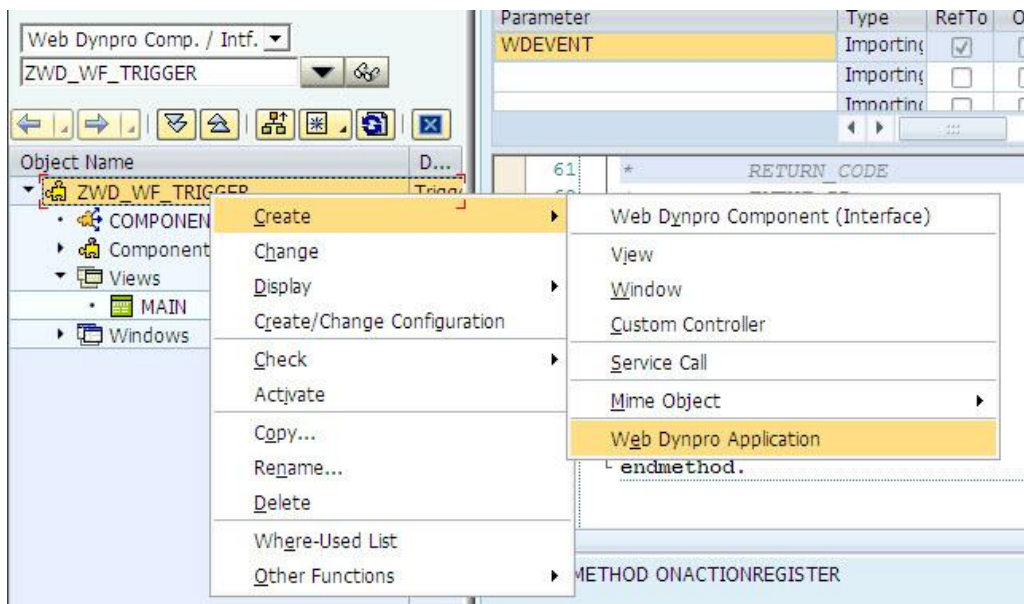
  ENDIF.

endmethod.

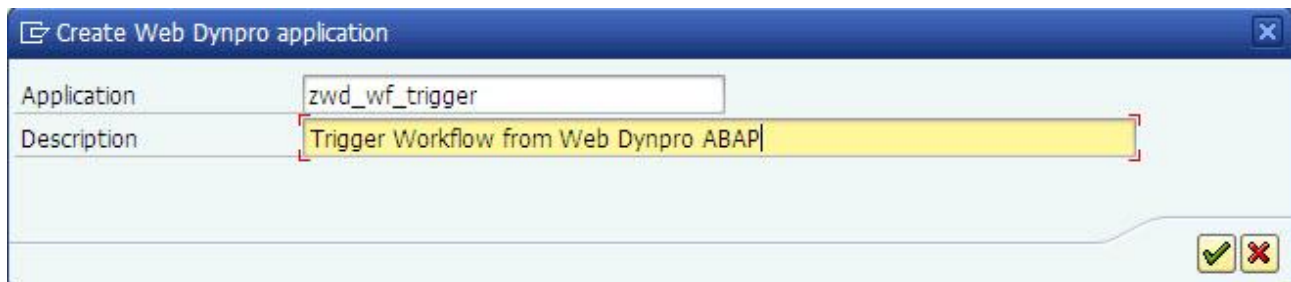
```

Step 3: Create Application

Save and Activate the Web Dynpro Component. Create the Web Dynpro Application and Save it.



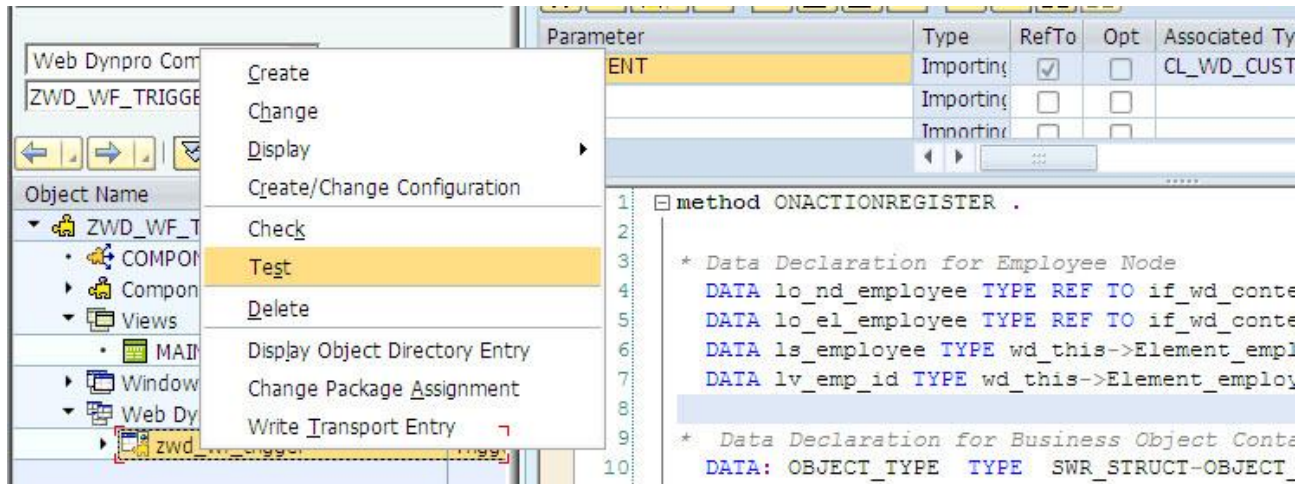
Enter description and Click on Ok.



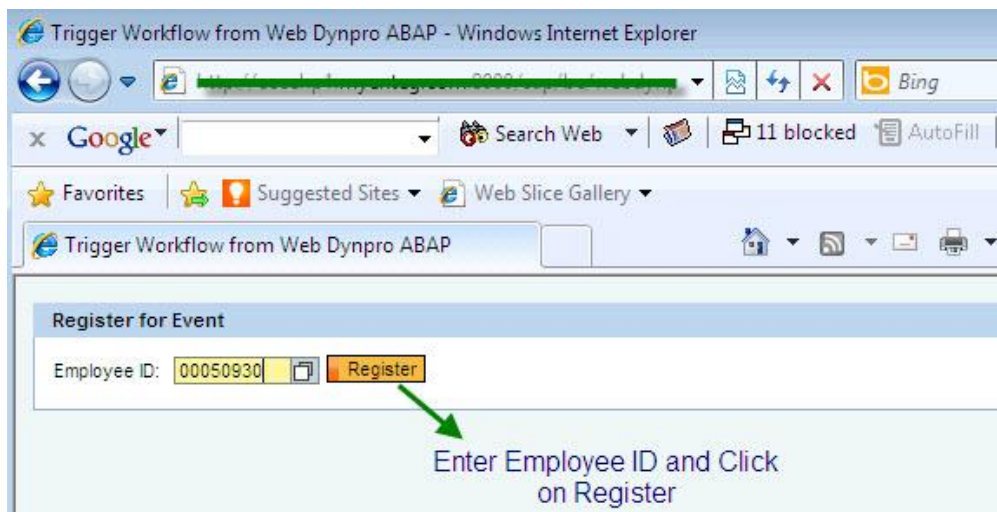
Save the Web Dynpro ABAP Application.

Result

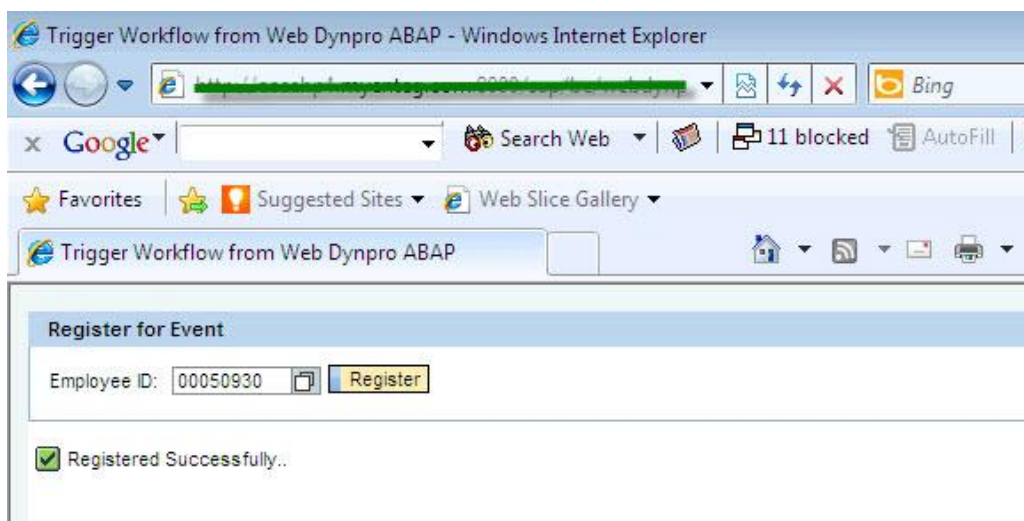
Right Click on the Web Dynpro ABAP Application and click on Test.



Enter Employee ID and Click on Register.



Now we can see the success message.



Now go to **SBWP** Transaction and Click on Inbox.

The screenshot shows the 'Business Workplace of Kiran Kumar Reddy' interface. The top navigation bar includes options like 'New message', 'Find folder', 'Find document', 'Appointment calendar', and 'Distribution lists'. The left sidebar displays a folder tree with 'Inbox' selected. The main area shows an 'Inbox' list with the following data:

Class	Title	Date rece...	Author	Att...	Sta...
Employee ID 00050930	Registered	02.07.2011	Workflow System		
Employee ID 00001025	Registered	02.07.2011	Workflow System		
Employee ID 00050930	Registered	01.07.2011	Workflow System		
Employee ID 00050930	Registered	01.07.2011	Workflow System		
Employee 00050930	Registered	01.07.2011	Workflow System		

The selected email's body is displayed below the list:

Employee ID 00050930 Registered

The following Employee Registered for Event.
 Employee ID: 00050930
 Employee Name: Kiran kumar Reddy

Annotations in the image include a green arrow pointing to the 'Title' column header and another pointing to the email body text. A blue text box with an arrow points to the email body content, stating: 'We can see the body of mail here with employee ID and Name'.

Conclusion

Here I demonstrated a simple Web Dynpro ABAP Application which triggers Workflow. This helps to create Business Objects, Workflow and Triggering Workflow from Web Dynpro ABAP as per Our Requirements.

Related Content

[How to Trigger Workflow from Web Dynpro ABAP - Part 1](#)

[How to Create Business Objects](#)

[Workflow Programming - SAP Help](#)

[Web Dynpro ABAP](#)

[Integration of Workflow with Web Dynpro ABAP](#)

For more information, visit the [Web Dynpro ABAP homepage](#)

Disclaimer and Liability Notice

This document may discuss sample coding or other information that does not include SAP official interfaces and therefore is not supported by SAP. Changes made based on this information are not supported and can be overwritten during an upgrade.

SAP will not be held liable for any damages caused by using or misusing the information, code or methods suggested in this document, and anyone using these methods does so at his/her own risk.

SAP offers no guarantees and assumes no responsibility or liability of any type with respect to the content of this technical article or code sample, including any liability resulting from incompatibility between the content within this document and the materials and services offered by SAP. You agree that you will not hold, or seek to hold, SAP responsible or liable with respect to the content of this document.