



How To... Use Analysis Process in Process Chains

Applicable Releases:

SAP NetWeaver '04 (SAP BW 3.5), SAP NetWeaver 7.0

IT Practice:

Business Information Management

IT Scenario:

Enterprise Data Warehousing

Version 1.0

August 2008

© Copyright 2008 SAP AG. All rights reserved.

No part of this publication may be reproduced or transmitted in any form or for any purpose without the express permission of SAP AG. The information contained herein may be changed without prior notice.

Some software products marketed by SAP AG and its distributors contain proprietary software components of other software vendors.

Microsoft, Windows, Outlook, and PowerPoint are registered trademarks of Microsoft Corporation.

IBM, DB2, DB2 Universal Database, OS/2, Parallel Sysplex, MVS/ESA, AIX, S/390, AS/400, OS/390, OS/400, iSeries, pSeries, xSeries, zSeries, z/OS, AFP, Intelligent Miner, WebSphere, Netfinity, Tivoli, Informix, i5/OS, POWER, POWER5, OpenPower and PowerPC are trademarks or registered trademarks of IBM Corporation.

Adobe, the Adobe logo, Acrobat, PostScript, and Reader are either trademarks or registered trademarks of Adobe Systems Incorporated in the United States and/or other countries.

Oracle is a registered trademark of Oracle Corporation.

UNIX, X/Open, OSF/1, and Motif are registered trademarks of the Open Group.

Citrix, ICA, Program Neighborhood, MetaFrame, WinFrame, VideoFrame, and MultiWin are trademarks or registered trademarks of Citrix Systems, Inc.

HTML, XML, XHTML and W3C are trademarks or registered trademarks of W3C®, World Wide Web Consortium, Massachusetts Institute of Technology.

Java is a registered trademark of Sun Microsystems, Inc.

JavaScript is a registered trademark of Sun Microsystems, Inc., used under license for technology invented and implemented by Netscape.

MaxDB is a trademark of MySQL AB, Sweden.

SAP, R/3, mySAP, mySAP.com, xApps, xApp, SAP NetWeaver, and other SAP products and services mentioned herein as well as their respective logos are trademarks or registered trademarks of SAP AG in Germany and in several other countries all over the world. All other product and service names mentioned are the trademarks of their respective companies. Data contained in this document serves informational purposes only. National product specifications may vary.

These materials are subject to change without notice.

These materials are provided by SAP AG and its affiliated companies ("SAP Group") for informational purposes only, without representation or warranty of any kind, and SAP Group shall not be liable for errors or omissions with respect to the materials. The only warranties for SAP Group products and services are those that are set forth in the express warranty statements accompanying such products and services, if any. Nothing herein should be construed as constituting an additional warranty.

These materials are provided "as is" without a warranty of any kind, either express or implied, including but not limited to, the implied warranties of merchantability, fitness for a particular purpose, or non-infringement.

SAP shall not be liable for damages of any kind including without limitation direct, special, indirect, or consequential damages that may result from the use of these materials.

SAP does not warrant the accuracy or completeness of the information, text, graphics, links or other items contained within these materials. SAP has no control over the information that you may access through the use of hot links contained in these materials and does not endorse your use of third party web pages nor provide any warranty whatsoever relating to third party web pages.

SAP NetWeaver "How-to" Guides are intended to simplify the product implementation. While specific product features and procedures typically are explained in a practical business context, it is not implied that those features and procedures are the only approach in solving a specific business problem using SAP NetWeaver. Should you wish to receive additional information, clarification or support, please refer to SAP Consulting.

Any software coding and/or code lines / strings ("Code") included in this documentation are only examples and are not intended to be used in a productive system environment. The Code is only intended better explain and visualize the syntax and phrasing rules of certain coding. SAP does not warrant the correctness and completeness of the Code given herein, and SAP shall not be liable for errors or damages caused by the usage of the Code, except if such damages were caused by SAP intentionally or grossly negligent.

Disclaimer

Some components of this product are based on Java™. Any code change in these components may cause unpredictable and severe malfunctions and is therefore expressly prohibited, as is any decompilation of these components.

Any Java™ Source Code delivered with this product is only to be used by SAP's Support Services and may not be modified or altered in any way.

Document History

Document Version	Description
-------------------------	--------------------

1.00	First official release of this guide
------	--------------------------------------

Typographic Conventions

Type Style	Description
<i>Example Text</i>	Words or characters quoted from the screen. These include field names, screen titles, pushbuttons labels, menu names, menu paths, and menu options. Cross-references to other documentation
Example text	Emphasized words or phrases in body text, graphic titles, and table titles
Example text	File and directory names and their paths, messages, names of variables and parameters, source text, and names of installation, upgrade and database tools.
Example text	User entry texts. These are words or characters that you enter in the system exactly as they appear in the documentation.
< Example text >	Variable user entry. Angle brackets indicate that you replace these words and characters with appropriate entries to make entries in the system.
EXAMPLE TEXT	Keys on the keyboard, for example, F2 or ENTER.

Icons





Icon	Description
	Caution
	Note or Important
	Example
	Recommendation or Tip

Table of Contents

- 1. **Scenario**..... 1
- 2. **Background Information**..... 1
- 3. **Prerequisites** 1
- 4. **Step-by-Step Procedure**..... 2
 - 4.1 Creation of Process Chain..... 2
 - 4.2 Execution of Process Chain 7

1. Scenario

You want to use an Analysis Process (Created in the Analysis Process Designer Workbench) in a process chain. The document explains the steps for achieving this in detail.

2. Background Information

The Analysis Process Workbench is the standard tool for creating an analysis process, for Data Mining purposes. The processes created in the workbench could be used in process chains so that the process could be scheduled for execution in specific intervals.

There is no existing process type for using these processes directly in a process chain. An ABAP program has to be executed with a variant. The variant can be created while filling in the parameters for the process type. Otherwise, one can use a pre-defined variant. The variant stores the name of the analysis process to be executed.

3. Prerequisites

This How-To-Guide doesn't deal with the creation of an Analysis Process. This guide only illustrates how an existing Analysis Process, created using Analysis Process Designer (APD), could be included in a Process Chain.

For more information on APD, please refer to the online documentation

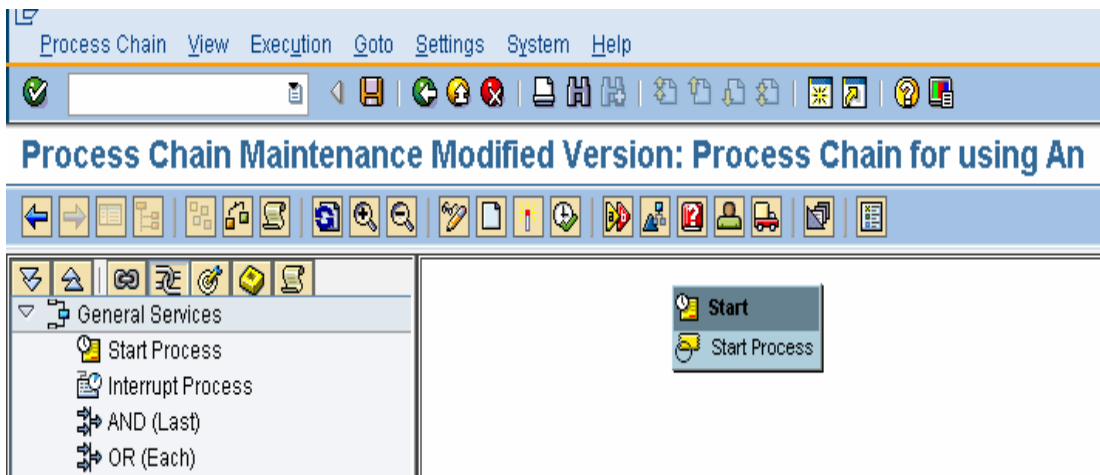
[SAP Online Documentation – Analysis Process Designer](#)

4. Step-by-Step Procedure

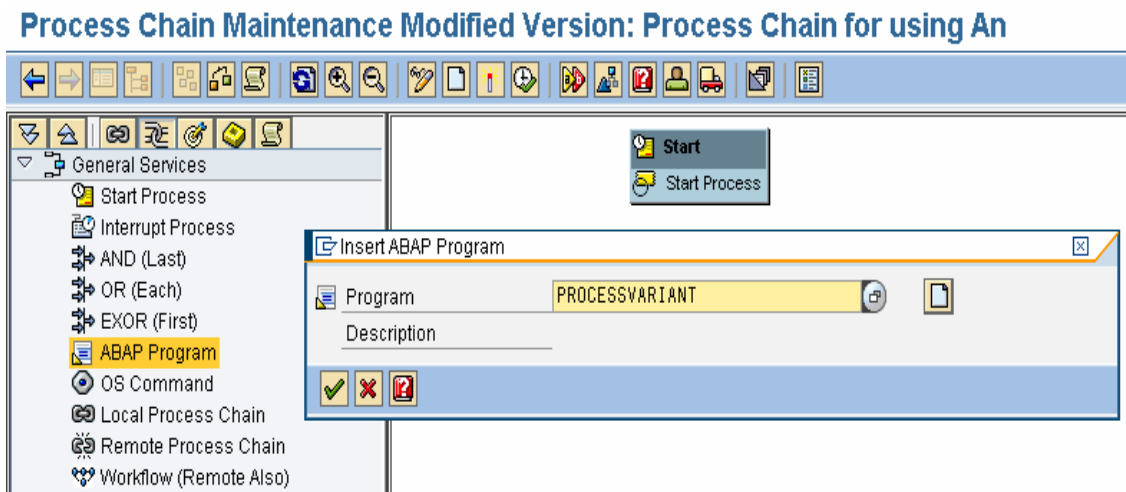
We need to schedule the execution of an Analysis Process using a Process Chain and the detailed steps for achieving this are listed below.

4.1 Creation of Process Chain

1. Click on “Start Process” and create a new start process for the process chain.

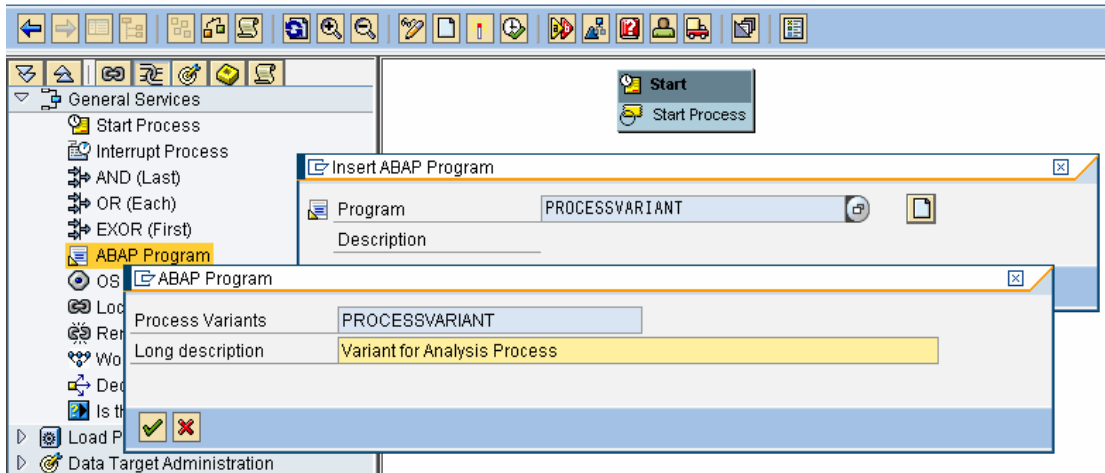


2. Click on the process type “ABAP Processes”. Enter the name of the variant against Program and click on “Create” icon.



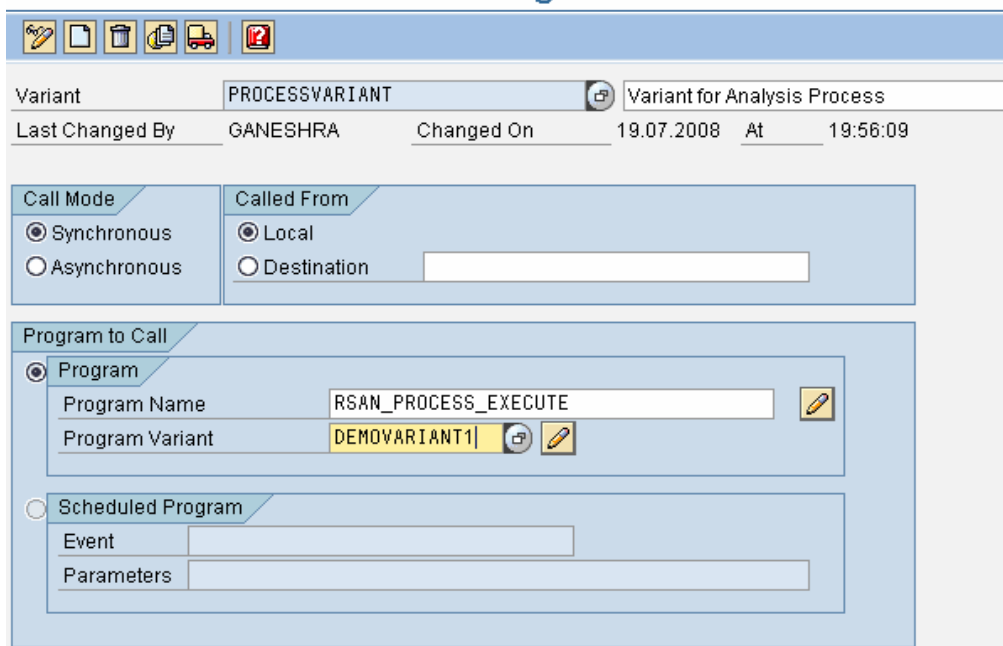
3. Enter the "Long Description" for the New Variant, and click on "✓".

Process Chain Maintenance Modified Version: Process Chain for using An

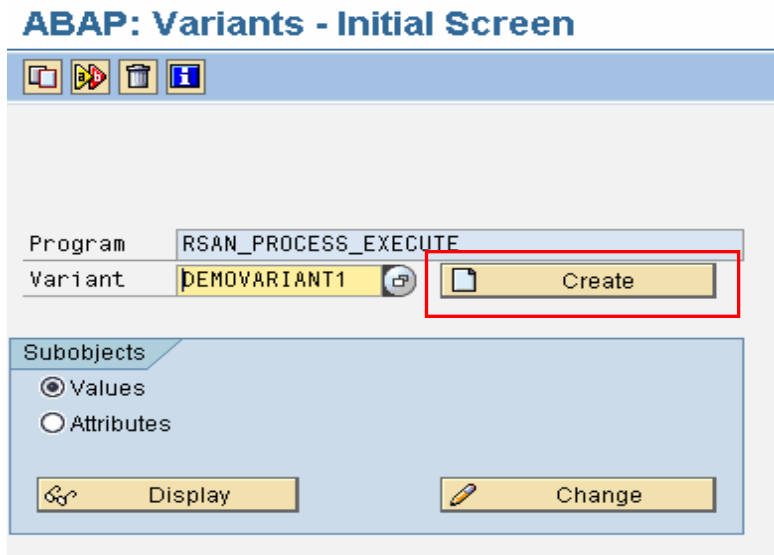


4. Enter the relevant details as explained below:
 Program Name : **RSAN_PROCESS_EXECUTE**
 Enter the name of the variant you want to create in the field "Program Variant" and click on the "Change" icon.

Process Maintenance: ABAP Program

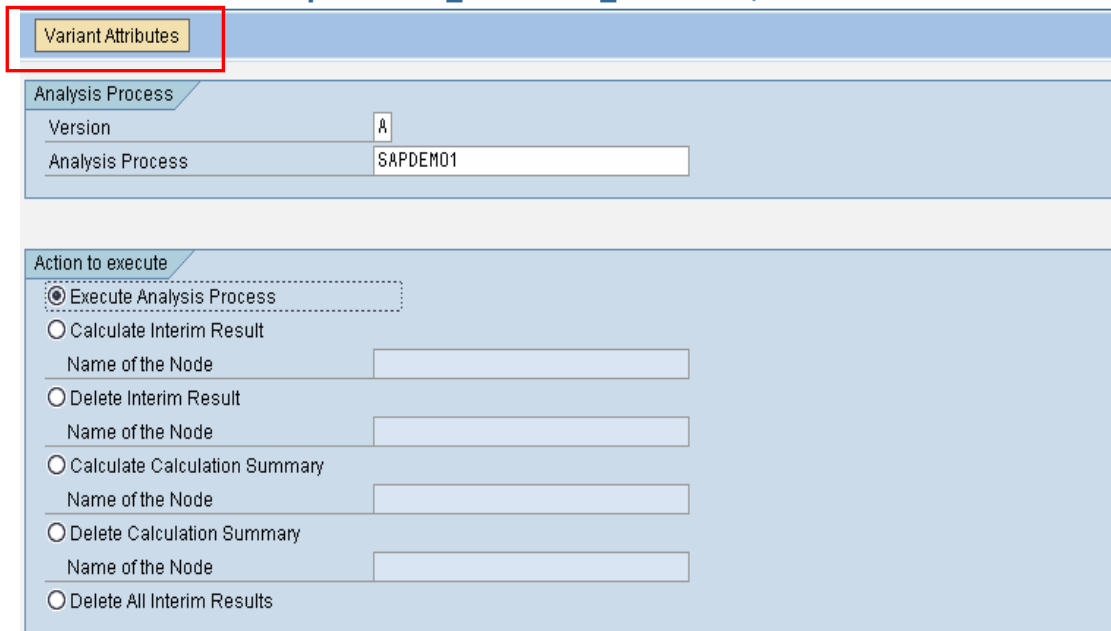


5. In the “ABAP Variants – Initial Screen”, Create a new Variant by:
 - a. Enter the name of the variant (as entered in the previous step) to be created.
 - b. Click on “**Create**”.



6. Maintain the Variant by:
 - a. Enter/Select the name of the Analysis process to be executed.
 - b. In “Action to Execute” tab, select the option “Execute Analysis Process”.
 - c. Click on “**Variant Attributes**”.

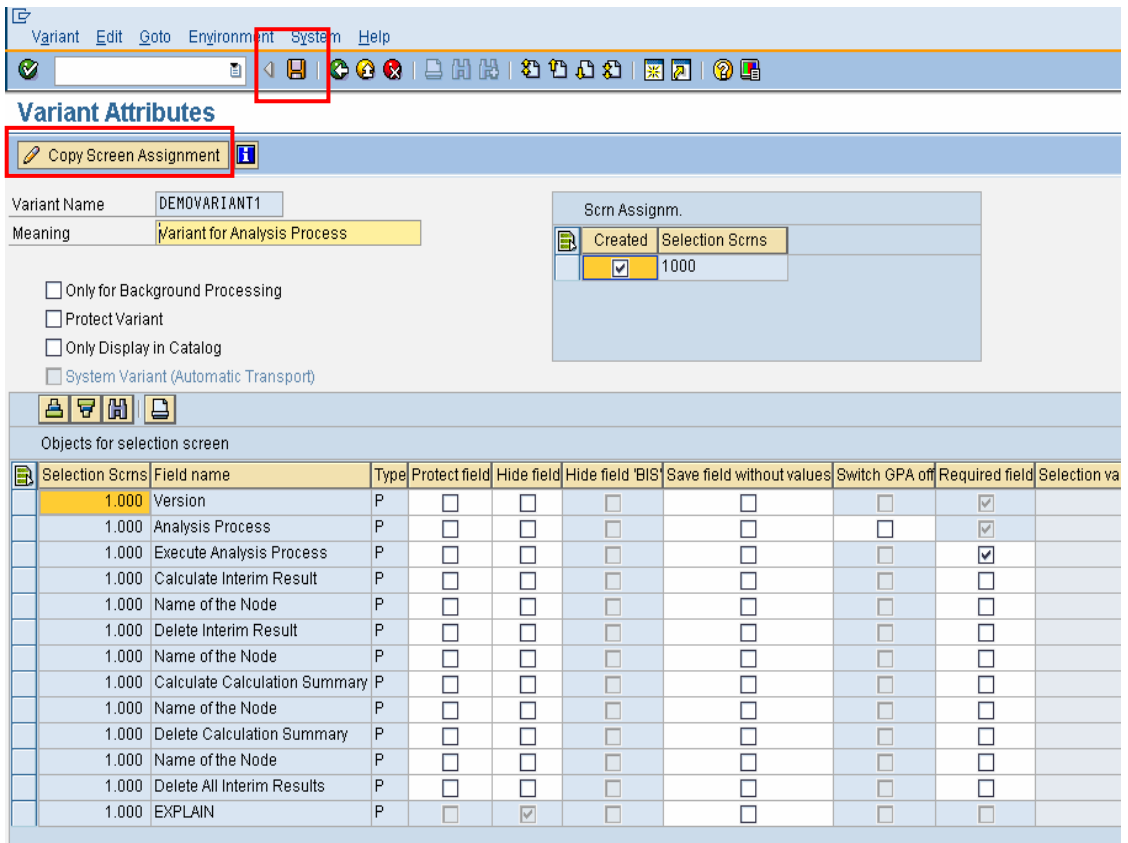
Maintain Variant: Report RSAN_PROCESS_EXECUTE, Variant DEMOVARIANT1



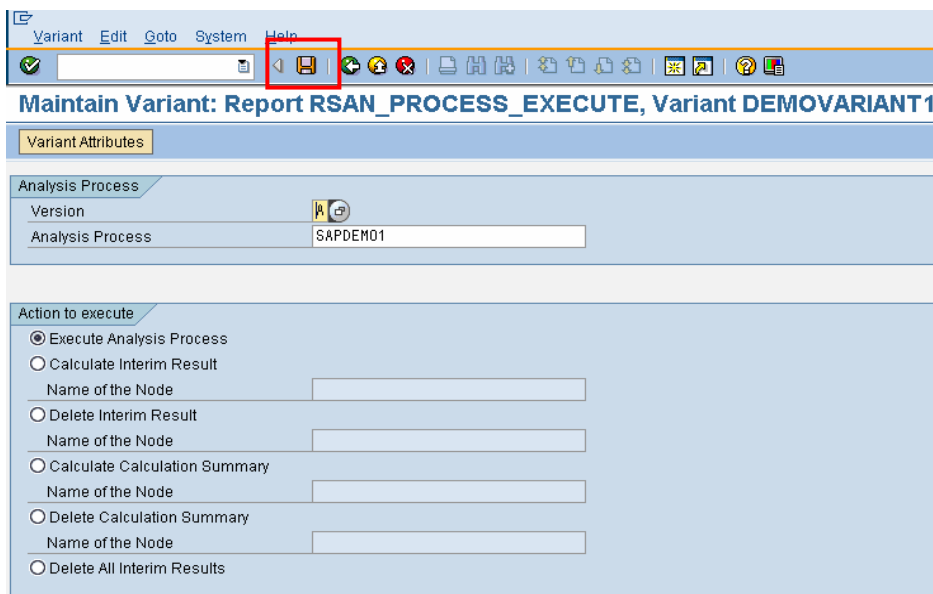
Note

Different options could be chosen in “Action to Execute” tab. This guide illustrates the option of merely “executing” an Analysis Process.

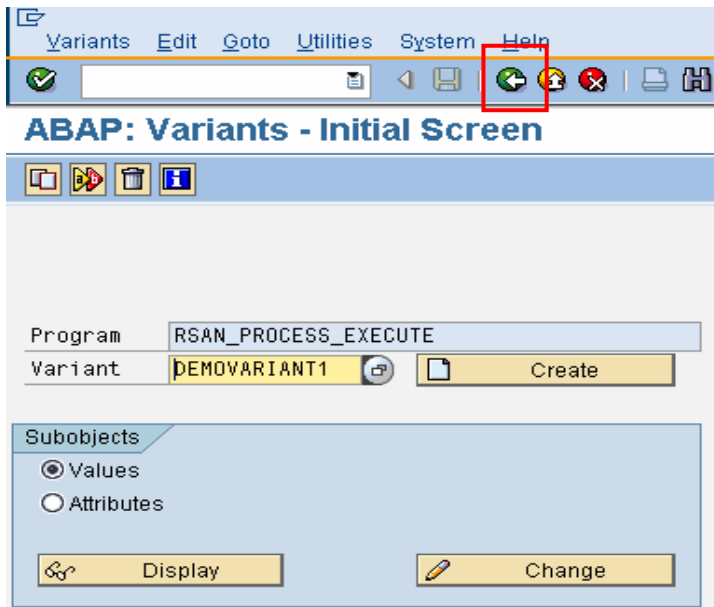
7. In the “Variant Attributes” screen, perform the following Steps.
 - a. Enter a text against the field “Meaning”.
 - b. Click on “Copy Screen Assignment” button.
 - c. Click on “Save” icon.



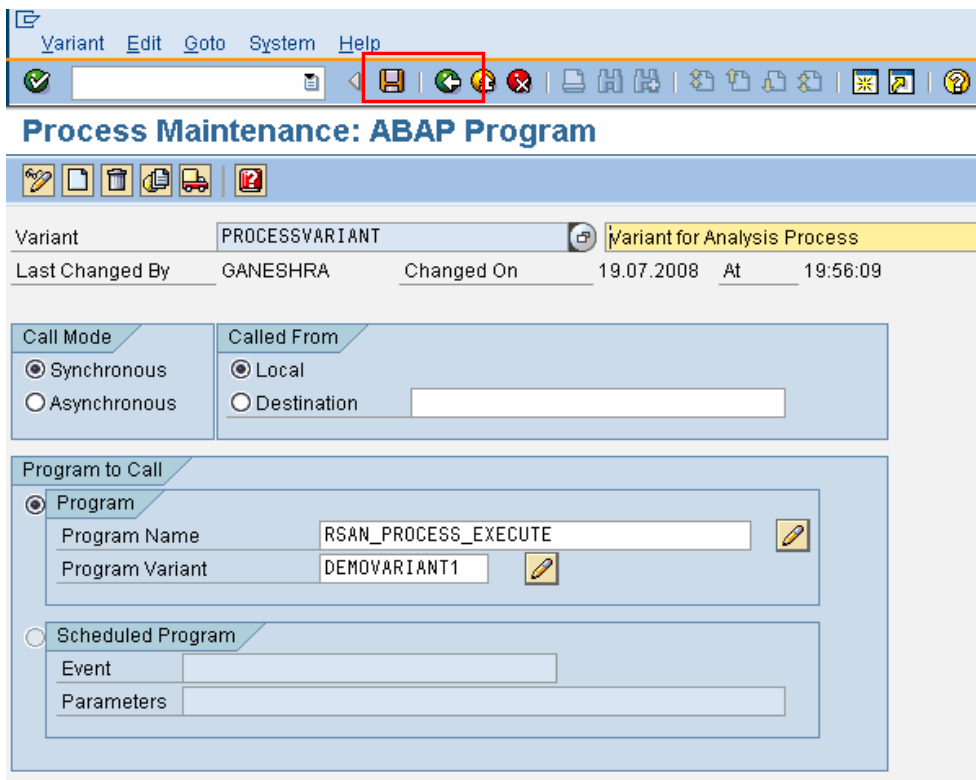
8. Perform the following steps to save the parameters of this process type:
 - Click on the “Save” icon and then, click on the “Back” icon and navigate to the variant maintenance screen.



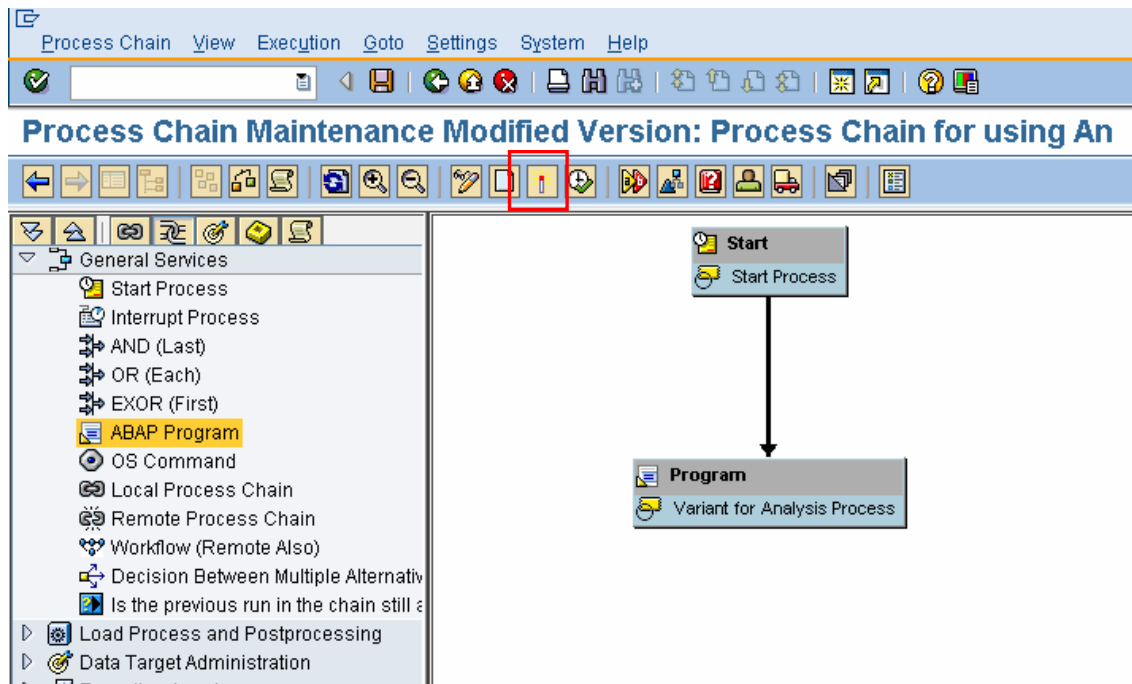
- Click on **“Back”** icon again to reach **“Process Maintenance”** screen.



- Click on **“Save”** icon and then, click on **“Back”** icon.
Click on **“✓”** on the next screen.



11. Connect the "Start Process" with this new variant which has been saved just now.
Save this Process chain and click on "Activate" icon.
The process chain is ready to be scheduled/executed.



4.2 Execution of Process Chain

The process chain created in the previous section could be scheduled for execution and it results in the execution of the analysis process. The process chain logs could be accessed for more details on the execution.

www.sdn.sap.com/irj/sdn/howtoguides