

Forgot or Lock "Administrator" or "J2EE_ADMIN" Password



Applies to:

SAP NetWeaver Portal 7.0. For more information, visit the [Portal and Collaboration homepage](#).

Summary

This article provides you a step guide as 'How to Unlock or Reset Administrator or J2EE_ADMIN password' of NetWeaver Portal. You will find appropriate screenshot of each and every step.

Author(s): Sumit Malhotra

Company: HCL Technologies

Created on: 05 October 2010

Author Bio



Sumit Malhotra has around 7 years of experience in IT Industry including 3 years as SAP NetWeaver Portal Consultant. He is SAP Certified Development Consultant 2004s – Portal and SUN Certified Java Programmer (SCJP 1.5). Currently working in HCL Technologies on SAP NetWeaver Portal and RIA.

Table of Contents

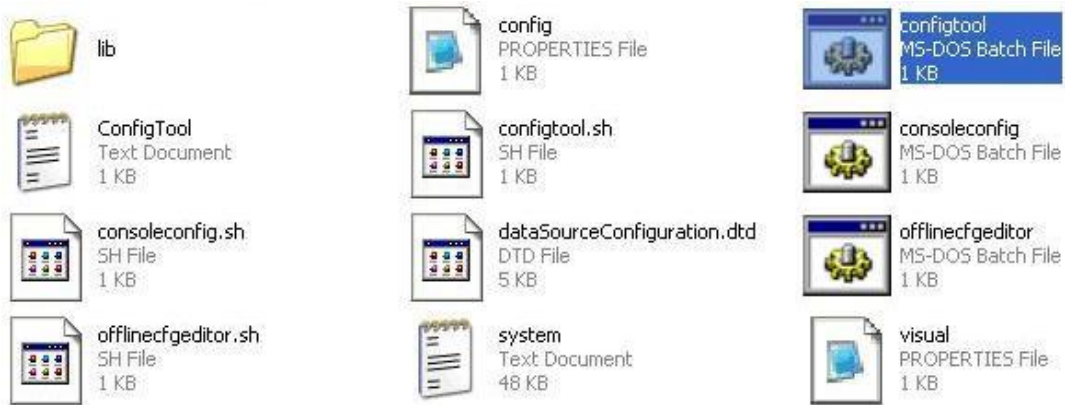
Enabling "SAP*"	3
Login with "SAP*" into Portal	5
Disabling "SAP*"	6
Related Content	7
Disclaimer and Liability Notice	8

Enabling "SAP*"

- Start the Config Tool –

C:\usr\sap\<SID>\<engine-instance>\j2ee\configtool\configtool.bat

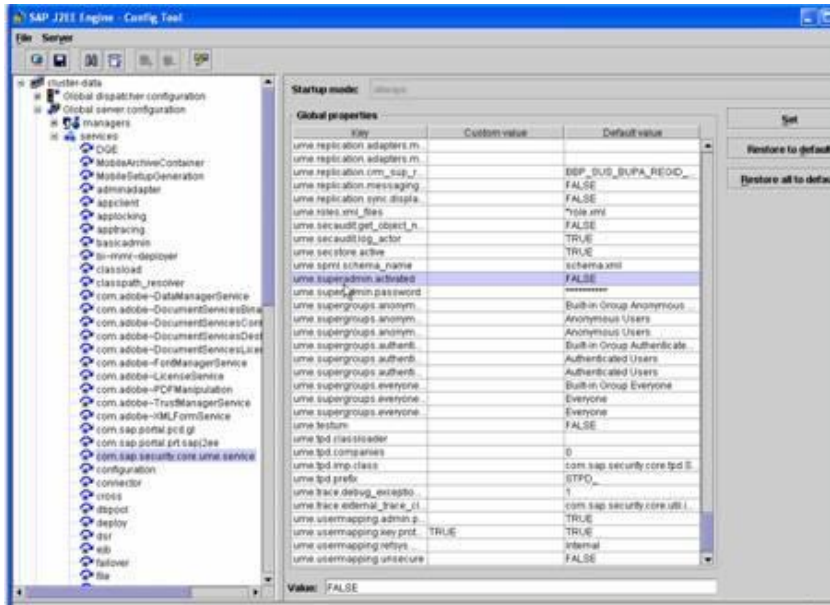
Ex: D:\usr\sap\F02\JC00\j2ee\configtool --> configtool.bat



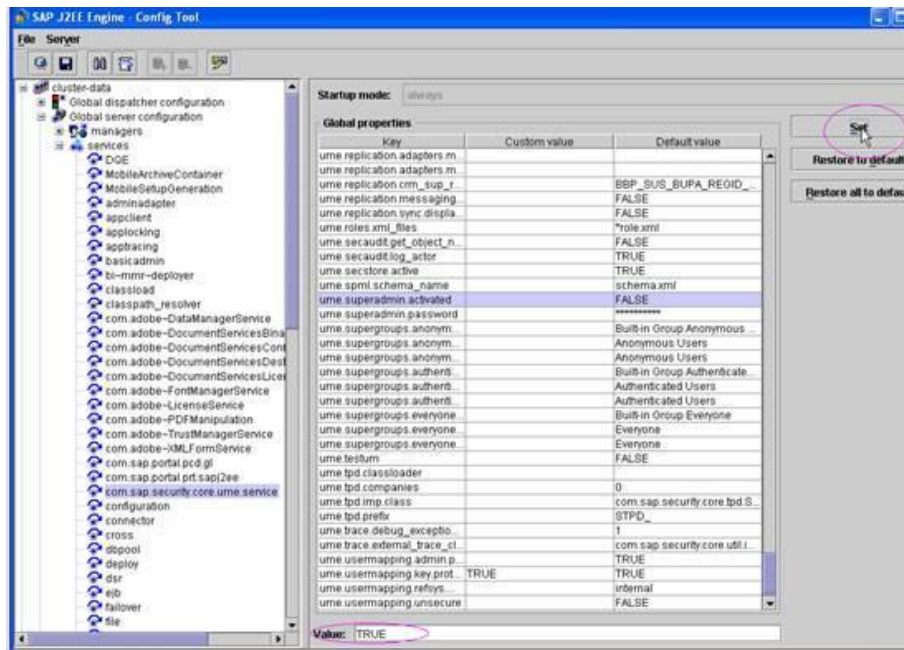
- Connect with the default database settings.
- Navigate to

Global server configuration-> services -> com.sap.security.core.ume.service.





- To change the value of a property
 - ✓ Select the property in the list (ume.superadmin.activated).
 - ✓ In Value at the bottom of the screen, change the value to TRUE.
 - ✓ Choose Set.
 - ✓ Apply the changes.



- Follow the same to set the property (ume.superadmin.password) also.
- In order for the changes to take effect, please restart the server.

Login with "SAP*" into Portal

- Now Log in to the portal using
Userid: sap*
Password: (as defined in the Config tool).



- Search for "Administrator" user.
- Reset or change password for "Administrator".
- Even create the new users and assign the necessary roles.

Disabling "SAP*"

When the sap* user is activated all the other users will be deactivated.]

- Start the Config Tool –
C:\usr\sap\<SID>\<engine-instance>\j2ee\configtool\configtool.bat
- Connect with the default database settings.
- Navigate to -
Global server configuration-> services -> com.sap.security.core.ume.service.
- Double-click on the property ume.superadmin.activated = FALSE.
- Save the changes and restart the engine.

Login with "Administrator" or New User

Related Content

Please include at least three references to SDN documents or web pages.

[Activating the Emergency User](#)

[Administrator User Account Locked](#)

[To Reset Administrator Password through Config Tool](#)

Disclaimer and Liability Notice

This document may discuss sample coding or other information that does not include SAP official interfaces and therefore is not supported by SAP. Changes made based on this information are not supported and can be overwritten during an upgrade.

SAP will not be held liable for any damages caused by using or misusing the information, code or methods suggested in this document, and anyone using these methods does so at his/her own risk.

SAP offers no guarantees and assumes no responsibility or liability of any type with respect to the content of this technical article or code sample, including any liability resulting from incompatibility between the content within this document and the materials and services offered by SAP. You agree that you will not hold, or seek to hold, SAP responsible or liable with respect to the content of this document.