

TEP12: Exercise

Exercise 02-01: Starting and Stopping J2EE Applications

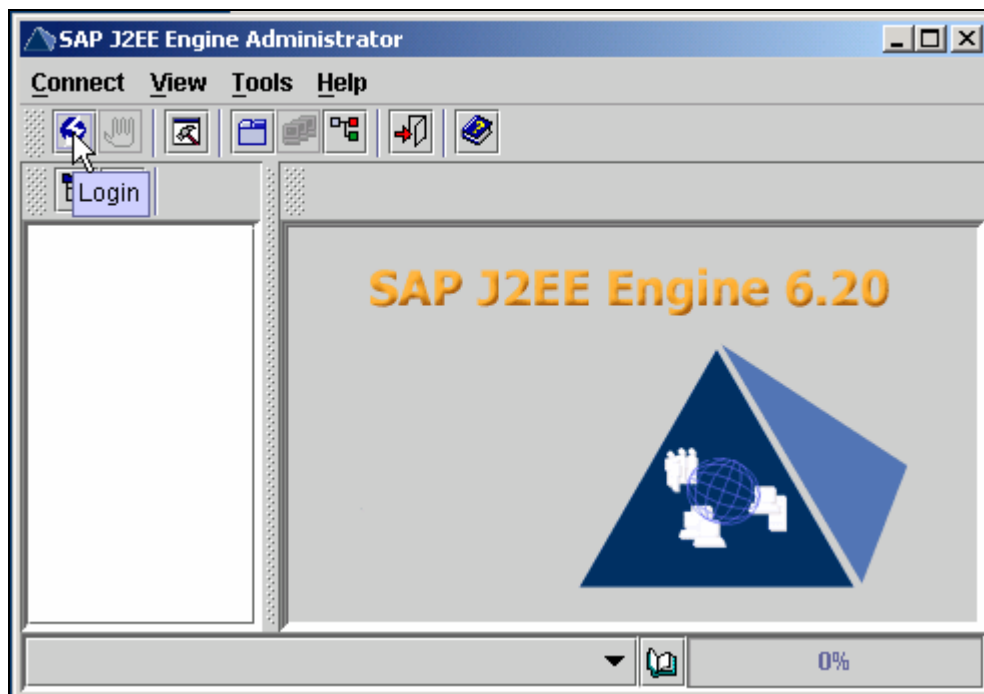


At the conclusion of this exercise, you will be able to:

- Start and stop J2EE Applications.
- Understand better how the J2EE engine works.

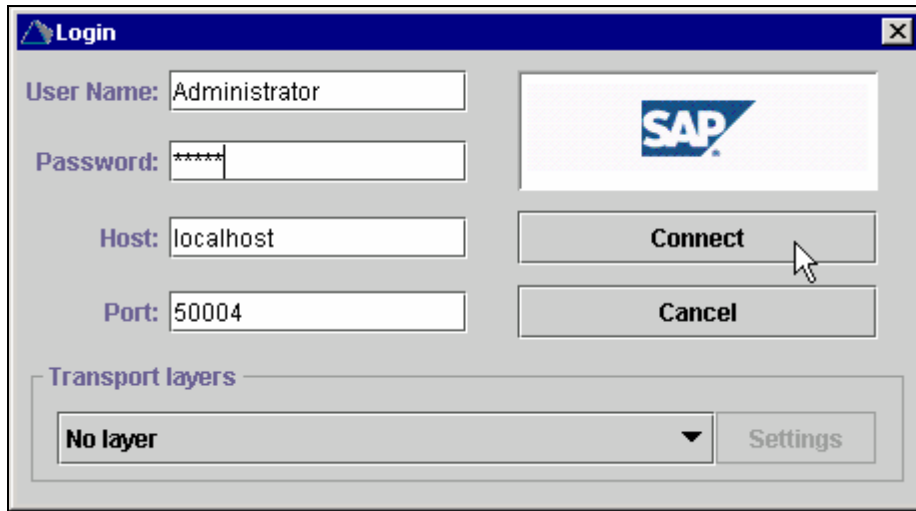
- 1-1 Connect to your portal server using Windows Terminal Server.
Check that the J2EE engine on your training portal is up and running.
- 1-2 Open a browser window and login to the portal.
Navigate to verify that the portal is fully operational
- 1-3 Open the file manager on the server and navigate to
“D:\usr\sap\<SID>j2ee\j2ee_00\admin\”. Start “go.bat”.

You should see the following screen:

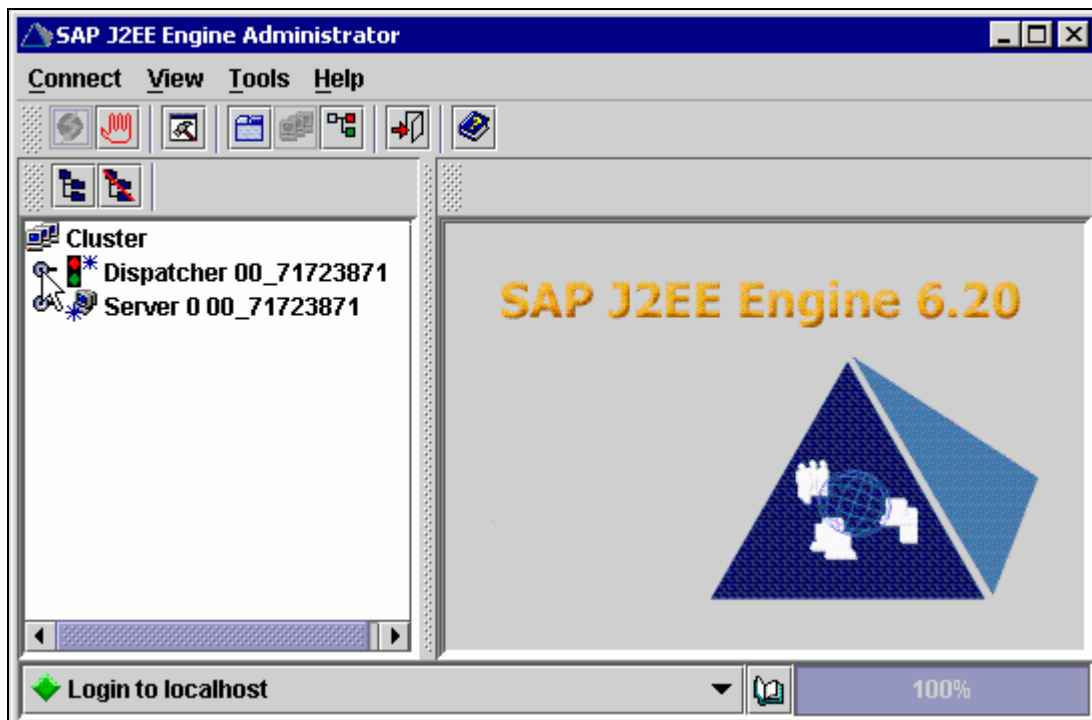


TEP12: Exercise

Login to the portal using the information as in the screenshot below.
(The password is “nimda”).):



Then you should see the following screen:

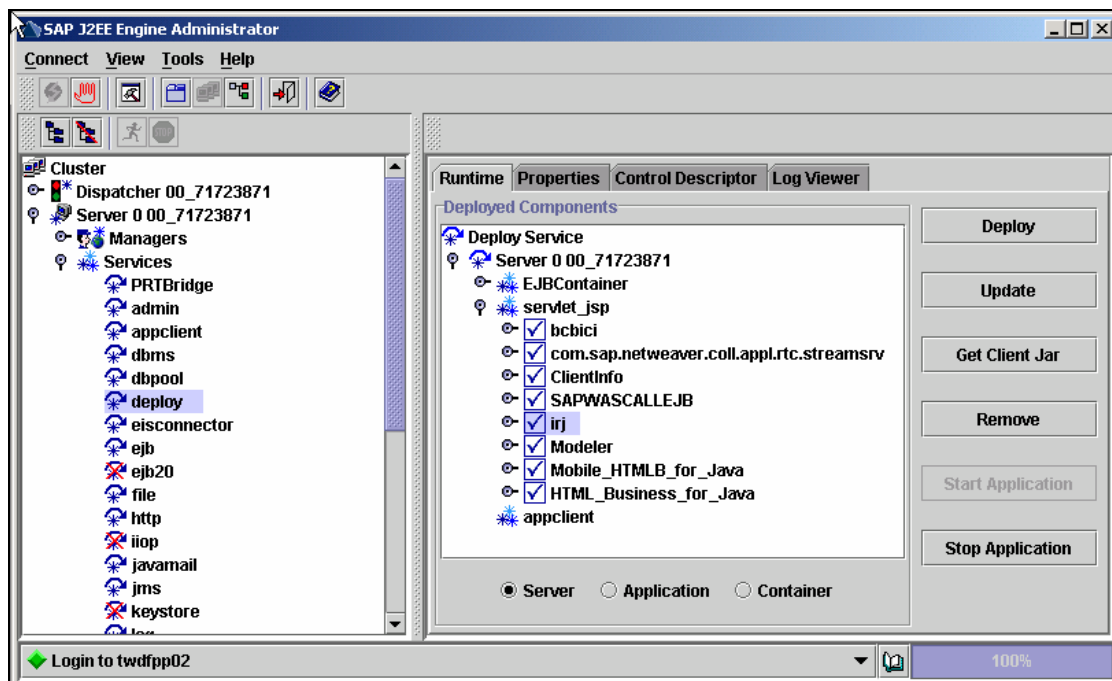


Click on “Dispatcher” and then on “Services”.

Mark the “deploy” service with a click and then open the server node in the “Runtime” Tab on the right. Open the tree of deployed applications in the J2EE engine by clicking on “servlet_jsp”.

TEP12: Exercise

Now you should see the following screen:



Mark “irj” and click on “Stop Application”. The icon near “irj” turns to a red “X”. Watch the output in the console window of the server node.

- 1-4 Go back to the browser and try to use the portal.
- 1-5 Then start the “irj” application again by clicking on “Start Application” the visual administrator.
Watch the output in the console window of the server node.
The icon near the “irj” application changes back to blue.
- 1-6 Shutdown the server node by entering “shutdown” in the console window of the portal.
Start the server node again with “go.bat”.
(The restart should not be necessary any more with EP 6.0 SP2 Patch 4.)
- 1-7 Verify that the portal is fully usable again – just as before.

Advanced Trainees can try to download the directory “D:\usr\sap\<SID>\j2ee\j2ee_00\admin\” to their workstation to connect to the J2EE engine from the remote workstation – without WTS access.