

**SAP NetWeaver 7.0**



# Print Options User Guide

**Document Version 1.0 – June 17th, 2009**

**SAP Web AS 6.20**

**SAP NetWeaver 2004**

**SAP NetWeaver 7.0, 7.01, 7.02**

**SAP NetWeaver 7.10, 7.11, 7.20, 7.30**

Last update:

18 June 2009

© Copyright 2009 SAP AG. All rights reserved.

No part of this publication may be reproduced or transmitted in any form or for any purpose without the express permission of SAP AG. The information contained herein may be changed without prior notice.

Some software products marketed by SAP AG and its distributors contain proprietary software components of other software vendors.

Microsoft, Windows, Excel, Outlook, and PowerPoint are registered trademarks of Microsoft Corporation.

IBM, DB2, DB2 Universal Database, OS/2, Parallel Sysplex, MVS/ESA, AIX, S/390, AS/400, OS/390, OS/400, iSeries, pSeries, xSeries, zSeries, System i, System i5, System p, System p5, System x, System z, System z9, z/OS, AFP, Intelligent Miner, WebSphere, Netfinity, Tivoli, Informix, i5/OS, POWER, POWER5, POWER5+, OpenPower and PowerPC are trademarks or registered trademarks of IBM Corporation.

Adobe, the Adobe logo, Acrobat, PostScript, and Reader are either trademarks or registered trademarks of Adobe Systems Incorporated in the United States and/or other countries.

Oracle is a registered trademark of Oracle Corporation.

UNIX, X/Open, OSF/1, and Motif are registered trademarks of the Open Group.

Citrix, ICA, Program Neighborhood, MetaFrame, WinFrame, VideoFrame, and MultiWin are trademarks or registered trademarks of Citrix Systems, Inc.

HTML, XML, XHTML and W3C are trademarks or registered trademarks of W3C®, World Wide Web Consortium, Massachusetts Institute of Technology.

Java is a registered trademark of Sun Microsystems, Inc.

JavaScript is a registered trademark of Sun Microsystems, Inc., used under license for technology invented and implemented by Netscape.

MaxDB is a trademark of MySQL AB, Sweden.

SAP, R/3, mySAP, mySAP.com, xApps, xApp, SAP NetWeaver, Duet, PartnerEdge, and other SAP products and services mentioned herein as well as their respective logos are trademarks or registered trademarks of SAP AG in Germany and in several other countries all over the world. All other product and service names mentioned are the trademarks of their respective companies. Data contained in this document serves informational purposes only. National product specifications may vary.

These materials are subject to change without notice. These materials are provided by SAP AG and its affiliated companies ("SAP Group") for informational purposes only, without representation or warranty of any kind, and SAP Group shall not be liable for errors or omissions with respect to the materials. The only warranties for SAP Group products and services are those that are set forth in the express warranty statements accompanying such products and services, if any. Nothing herein should be construed as constituting an additional warranty.

<b>Print Options for SAPscript and SAP Smart Forms (POSS).....</b>	<b>1</b>
<b>Introduction.....</b>	<b>3</b>
<b>1. Print Options in Printer Administration (SPAD).....</b>	<b>3</b>
<b>1. 1. Disable Print Options.....</b>	<b>4</b>
<b>1. 2. Pre-select Print Options .....</b>	<b>5</b>
<b>2. Print Options in SAPscript/Smart Forms Print Dialog .....</b>	<b>7</b>
<b>2. 1. Display Print Options in Output Controller (SP01).....</b>	<b>8</b>
<b>2. 2. Restrictions.....</b>	<b>10</b>
<b>3. Print Options in Output Controller .....</b>	<b>10</b>
<b>3. 1. Restrictions.....</b>	<b>12</b>
<b>4. List of available Print Options .....</b>	<b>12</b>
<b>5. Precedence of Print Options.....</b>	<b>15</b>

# Print Options for SAPscript and SAP Smart Forms (POSS)

## Purpose

This document describes implementation and usage of Print Options for SAPScript forms and SAP Smart Forms (POSS) for printing with special device types.

## Constraints

Note that specially developed device types are required for using Print Options. Currently SAP delivers only one device type (see SAP Note 1049778). As development is ongoing, the information in this document is subject to change. Make sure you always use the current version of the Print Options User Guide.

You can download the current version from the SAP Developer Network (SDN) Community. Use the following link to access the information on SDN:

<http://www.sdn.sap.com/irj/sdn/printing>

## SAP Notes

<a href="#">1049778</a>	Additional print options for SAPscript/Smart Forms
-------------------------	--

## Glossary

<b>Print Options for SAPscript and SAP Smart Forms</b>	Additional function which enables users to select additional print options for single output requests.
<b>Print Options</b>	Short form used in this document
<b>POSS</b>	Abbreviation used in this document
<b>Print option</b>	Examples: input tray selection, output bin selection, duplex printing, colour printing, punching, stapling. See section <a href="#">4. List of available Print Options</a> [12].
<b>Print option value</b>	A print option can be configured with special values. Examples: Option 'Input Tray' – Values 'Input Tray 1'/'Input Tray 2' Option 'Double-Sided Printing' – Values

	<p>'Double-Sided, long edge binding' / 'Double-Sided, short edge binding'.</p> <p>See section <a href="#">4. List of available Print Options</a> [12].</p>
<b>Device type</b>	<p>The device type is the total of all attributes of an output device that the SAP System must know to control the output device correctly, such as control commands for font selection, page size, character set selection, and so on. The system uses the information in the device type to convert a document from the internal SAP character representation (spool request in OTF or in text format) to a device-specific, print-ready data stream (output request). Since a device type specifies attributes that apply to all devices of a certain model, it can be shared among device definitions.</p> <p>Currently SAP delivers only one device type which supports Print Options: HP4350.</p>
<b>Output device</b>	<p>Device used to represent information from a computer in an SAP system. This can be display screens, printers, fax machines and archiving devices.</p>
<b>SP01</b>	Output Controller transaction
<b>SPAD</b>	Spool Administration transaction

## Software Requirements

Print Options for SAPscript and SAP Smart Forms (POSS) is available for SAP systems based on SAP Web AS 6.20, SAP NetWeaver 2004 and SAP NetWeaver 7.0 (formerly 2004s) and SAP NetWeaver 7.10.

Minimum Support Package	Minimum Kernel Patch Level
SAP_BASIS 7.10 SP00	
SAP_BASIS 7.00 SP13	SAP_BASIS 7.00: Kernel Patch level 109
SAP_BASIS 6.40 SP21	SAP_BASIS 6.40: Kernel Patch level 182
SAP_BASIS 6.20 SP63	

Refer to SAP Note [1049778](#) for recent updates on support package and kernel patch levels.  
Refer to SAP Note [1354067](#) for POSS enhancements.

## Introduction

Print Options for SAPscript and Smart Forms (POSS) enables users to select individual print options depending on the selected printer model, such as input tray selection, stapling, double-sided printing etc. when printing a SAPscript or Smart Forms document. This means, printing a form generated from an SAP application by using SAPscript or Smart Forms tools.

You can find a detailed list of currently available print options in section [4. List of available Print Options](#).

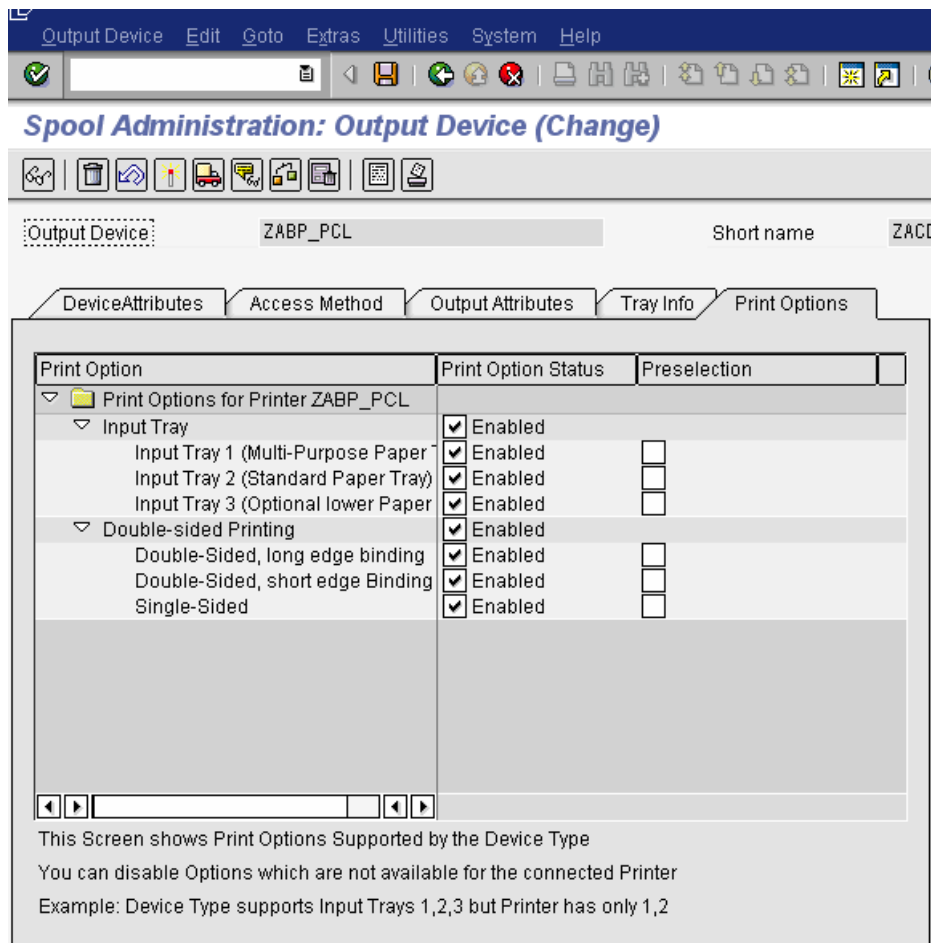
There are three locations in the SAP system where users will be experiencing new interactions in connection with Print Options:

Location	Targeted audience	Short form
Spool Administration (transaction SPAD)	system or printer administrator (SPAD administrator)	SPAD administrator
SAPscript/Smart Forms form print dialog	end user/application user	User
Output Controller (transaction SP01)	end user/application user	User

## 1. Print Options in Printer Administration (SPAD)

As described at the beginning of this document, SAP currently delivers one device type which supports Print Options: **HP4350**. It is delivered with the minimum support packages listed in section [Software Requirements](#) [2].

The SPAD administrator must first define an output device which uses a device type that supports Print Options. As HP4350 is currently the only device type delivered with this option, the examples in this document always refer to HP4350.  
Afterwards the output device shows an additional tabstrip 'Print Options':



All option settings supported by this device type are displayed. In this example there are:

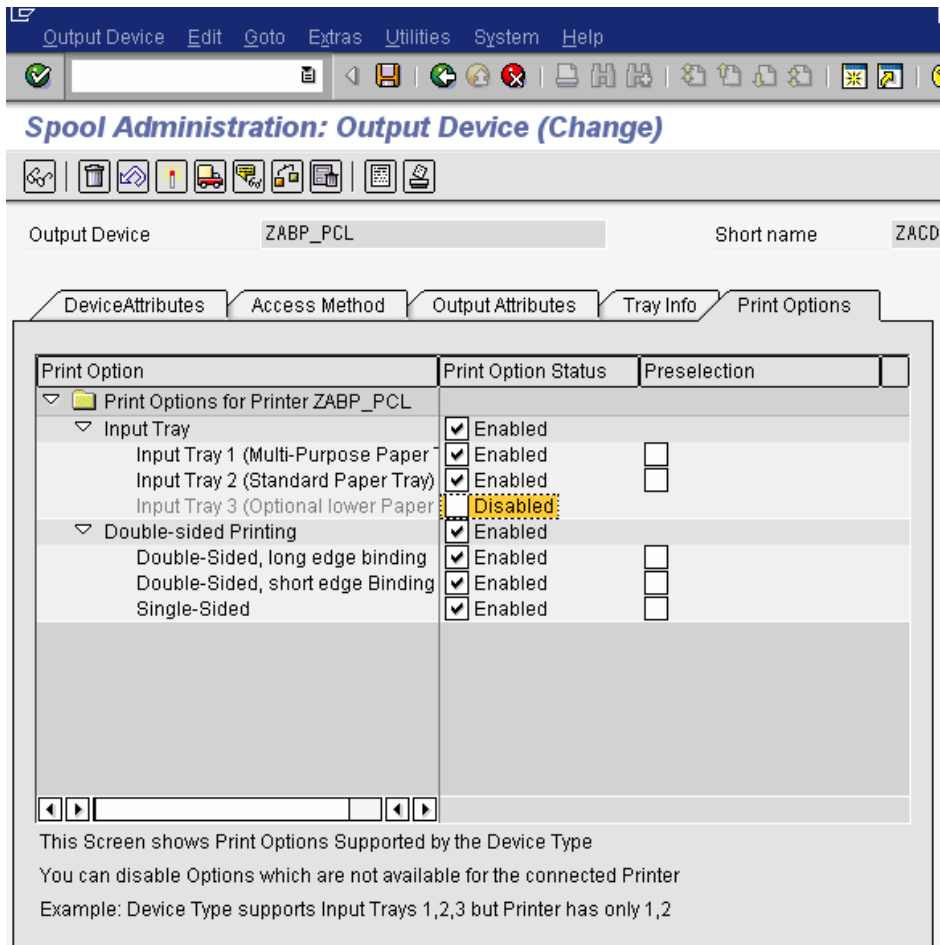
- Three Input Trays
- Double-sided printing: long edge binding, short edge binding, single-sided

The SPAD administrator can now:

1. disable options
2. pre-select options.

## 1. 1. Disable Print Options

A device type may offer a set of options which exceeds the set of options the actual physical printer supports. For example, the device type HP4350 supports three input trays, of which the third tray is an optional input tray which may not be present with a specific instance of a LaserJet 4350 printer model. In this case, the SPAD administrator should disable print option value 'Input tray 3' as shown in the example below:

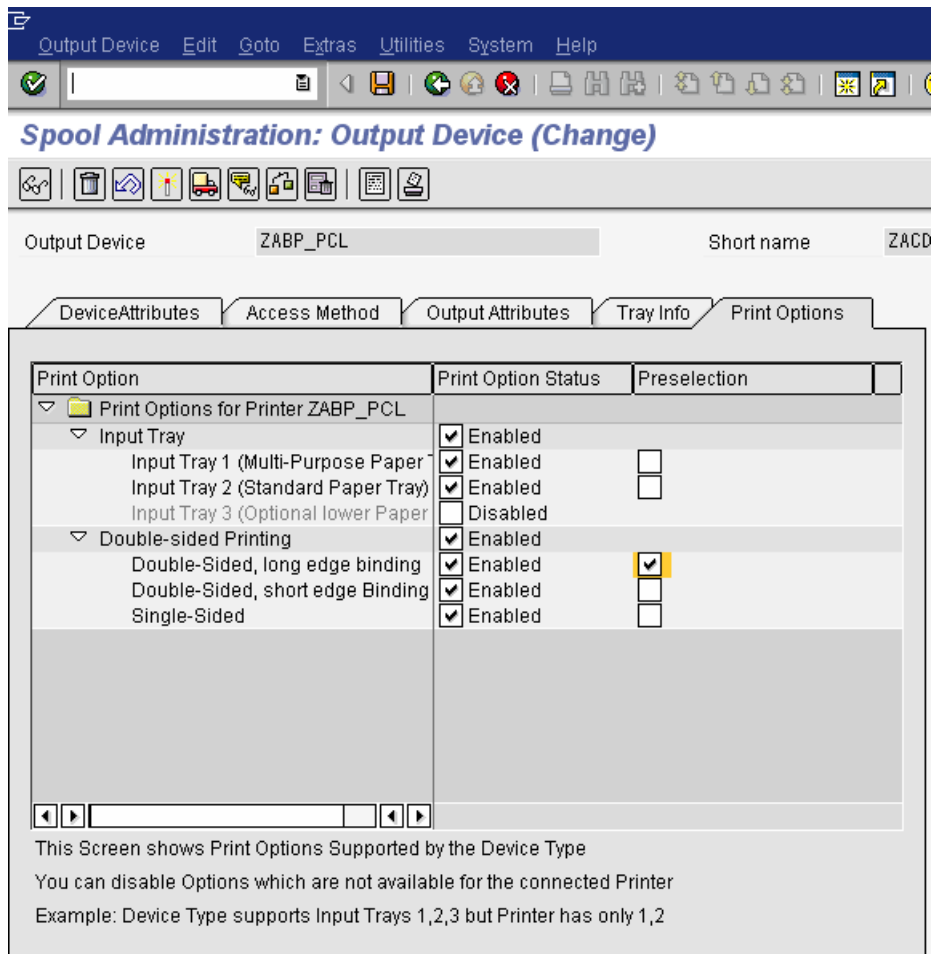


As a consequence, only input trays 1 and 2 will be displayed when a user selects Print Options for this output device.

## 1. 2. Pre-select Print Options

A SPAD administrator can pre-select certain options or option values. Pre-selected options cannot be changed by end users. For example, the administrator wants to make sure that users can only choose double-sided printing for a special printer. In this case option value 'Double-Sided printing, long edge binding' should be pre-selected:





As a result this option value will be fixed whenever a user navigates into the Print Option selection screen for this output device. The user will not be able to change this setting.

## 2. Print Options in SAPscript/Smart Forms Print Dialog

When an application program calls the SAPscript composer (function module OPEN\_FORM) with user dialog enabled (parameter DIALOG=X), this Print Dialog screen is displayed:

The screenshot shows the 'Print' dialog box with the following fields and options:

- Output Device:** HPC1 (highlighted in yellow), with a printer icon and 'MPS P1.64 HP CC' next to it.
- Number of copies:** 1
- Page Selection:** (empty text field)
- Spool Request:**
  - Name:** SCRIPT SEEM
  - Title:** (empty text field)
  - Authorization:** (empty text field)
- Spool Control:**
  - Print immediately
  - Delete After Output
  - New Spool Request
  - Close Spool Request
  - Spool Retention Per.:** 8 Day(s)
  - Storage Mode:** 1 Print only
- Cover Page Settings:**
  - SAP Cover Page:** Do Not Print
  - Recipient:** (empty text field)
  - Department:** (empty text field)

At the bottom, there are three buttons: 'Print Preview' (with a magnifying glass icon), 'Print' (with a printer icon), and a close button (with an 'X' icon).

If you enter an output device which supports Print Options, a new button  *Additional Options* will be displayed:


The screenshot shows the 'Print' dialog box with the following fields and options:

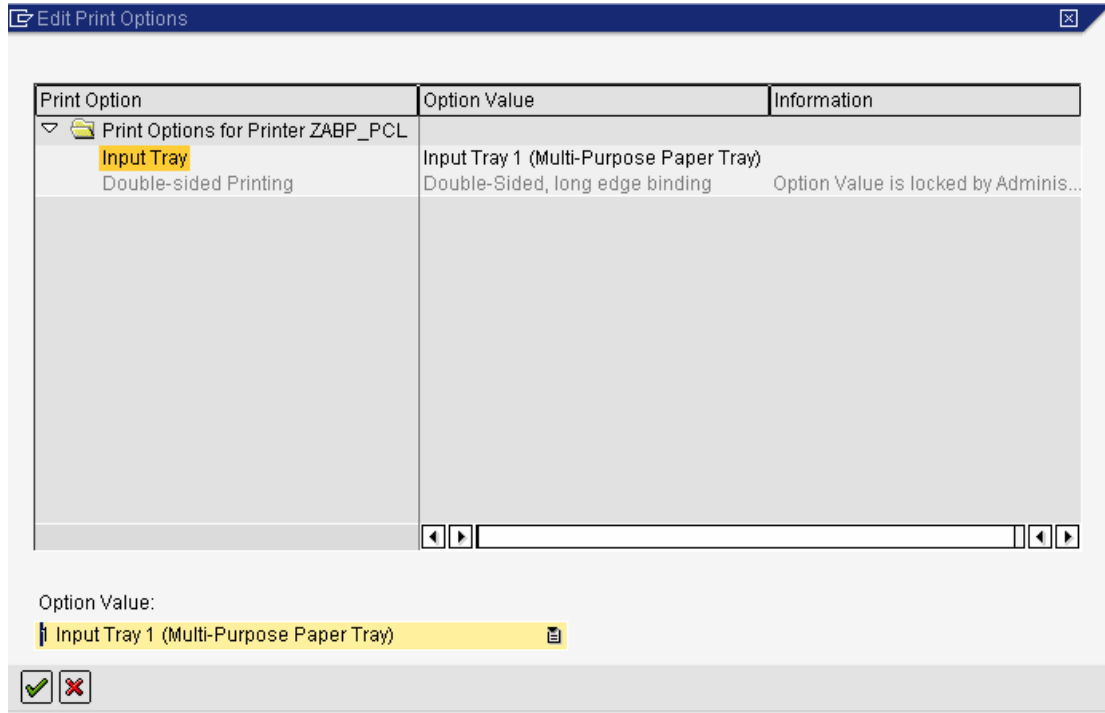
- Output Device:** ZABP\_PCL (highlighted in yellow), with a printer icon and 'HP4350 (poss opt)' next to it.
- Number of copies:** 1
- Page Selection:** (empty text field)
- Spool Request:**
  - Name:** SCRIPT SEEM
  - Title:** (empty text field)
  - Authorization:** (empty text field)
- Spool Control:**
  - Print immediately
  - Delete After Output
  - New Spool Request
  - Close Spool Request
  - Spool Retention Per.:** 8 Day(s)
  - Storage Mode:** 1 Print only
- Cover Page Settings:**
  - SAP Cover Page:** Do Not Print
  - Recipient:** (empty text field)
  - Department:** (empty text field)


At the bottom, there are four buttons: 'Print Preview' (with a magnifying glass icon), 'Print' (with a printer icon), 'Additional Options' (with a printer icon), and a close button (with an 'X' icon).

**Note:**

For Smart Forms, the Print Dialog screen looks similar.

Select  *Additional Options* to open the Print Options selection screen. All options available for this output device are displayed. You can select now the option values you want to use for printing. Double-click on the corresponding option line in the option list and select its value using the drop-down menu or checkbox at the bottom area of the screen. Afterwards the selected option value will be displayed in column 'Option Value'.



When all option values are selected, choose .

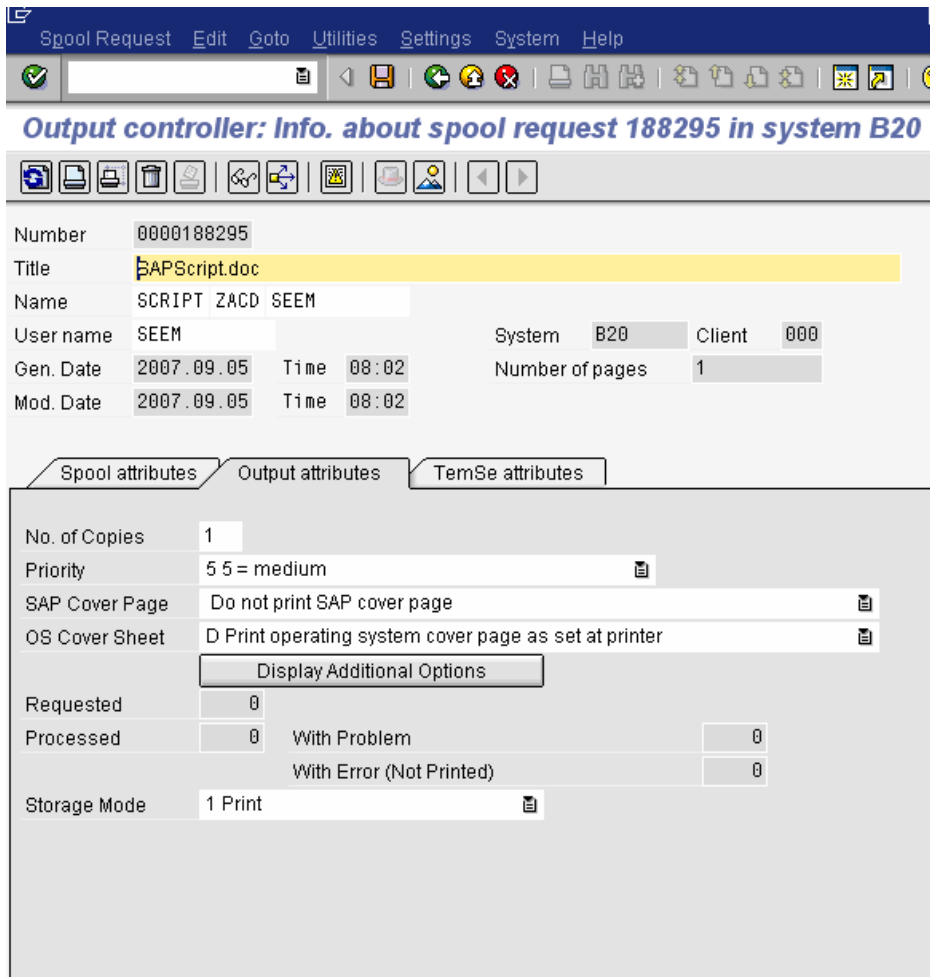
Back on the Print Dialog screen, select  *Print* to create your spool request. The option selections you have made will be saved together with the spool request.

**Note:**

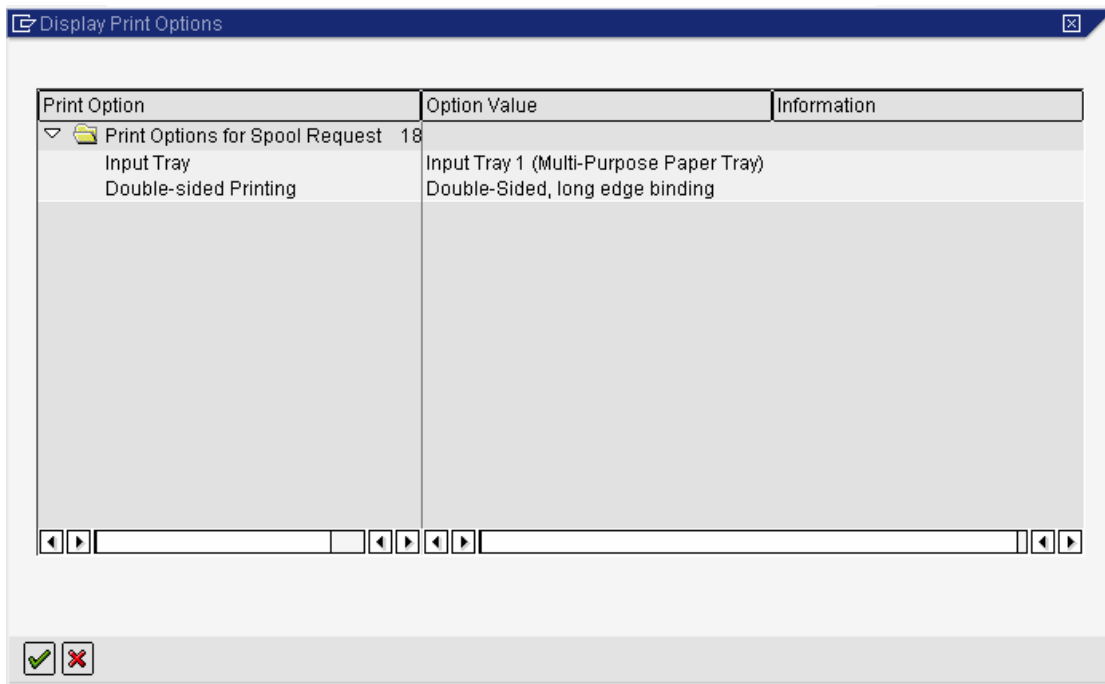
If you enter another output device in the Print Dialog screen and return to the Print Options screen, all option value settings made before are set to their initial values.

## 2. 1. Display Print Options in Output Controller (SP01)

If you want to verify that your Print Options were saved with the spool request, open transaction SP01 (Output Controller). Display the attributes of your spool request. If it has Print Options attached, a new button *Display additional options* will be displayed on the 'Output Attributes' tabstrip:



Select this button to display the Print Options for this spool request:



**Note:**

Print Options can also be displayed for **output requests** in SP01.

## 2. 2. Restrictions

For users, the Print Option selection screen is part of the user dialog (referred to as Print Dialog Screen in this document) built into the SAPscript or Smart Forms composer.

**Note: Only the Print Dialogs triggered from within the SAPscript composer or Smart Forms composer will allow selection and submit of Print Options for devices supporting the new options.**


This restriction exists because the new options should be available to application programs without any programming changes to the applications.

**Note:**

Currently, Print Options are not supported when:

1. an application program has built its own printer selection dialog,
2. an application program calls the stand-alone Printer dialog function modules GET\_TEXT\_PRINT\_PARAMETERS (SAPscript) or SSF\_SHOW\_DIALOG (Smart Forms) to obtain printer information,
3. a printout is triggered from an application without any user interaction (e.g. in Update Task or via a background job).

## 3. Print Options in Output Controller

When you use an output device which supports Print Options, you can change or set Print Options when printing or reprinting a SAPscript / Smart Forms spool request from transaction SP01 (Output Controller). This is possible whether the spool request was created with Print Options or not. Select button  (Print with changed parameters). A new button *Additional Options* will be displayed on the Print Dialog screen:

Print Edit Goto System Help

**Output controller: Print spool request 188295**

Archive

**Print Parameters**

Output Device: ZABP\_PCL HP4350 (poss opt)

Number of Copies: 1

Priority: 5 5 = medium

From Page: To Page:

**Cover Page**

Recipient: Department: Title: SAPScript.doc

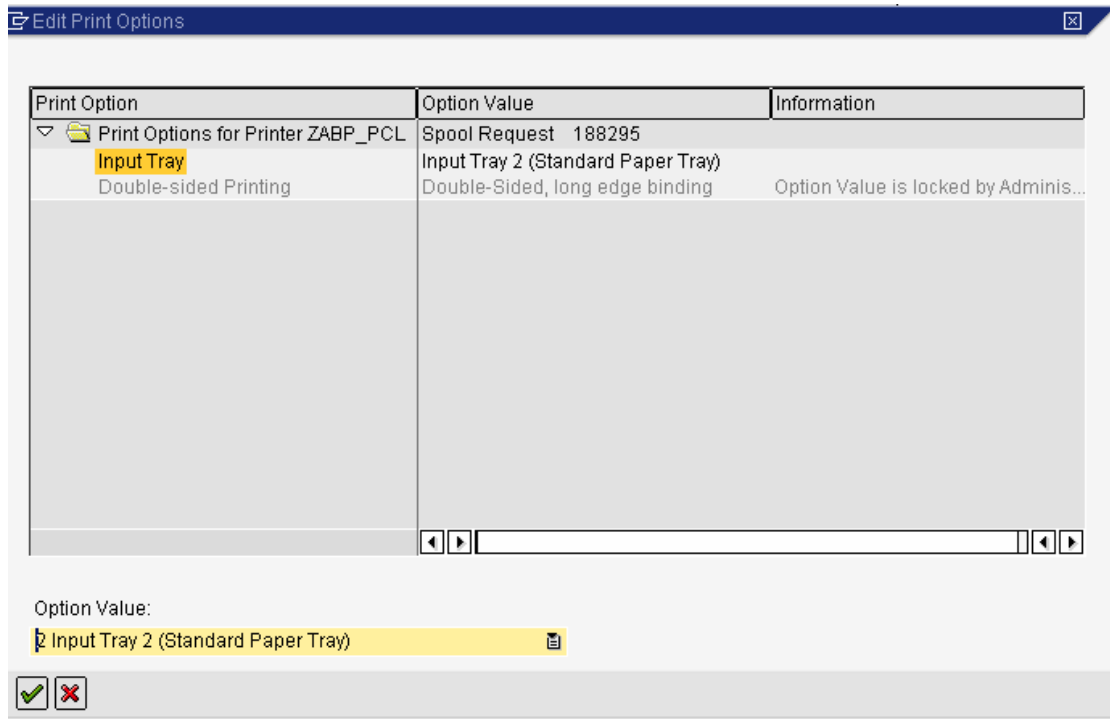
**Spool Request**

Name: SCRIPT ZACD SEEM


Number: 188,295

Format: INCH12 SAPscript format for 12 inch continuous form (=72 lines...

Select this button to change or set Print Options for the output request. The same Print Options dialog as described in section [2. Print Options in SAPscript/Smart Forms Print Dialog \[7\]](#) opens. You can now select option values for your output request:



**Note:**

When you choose  (Print directly) to print a spool request without an additional user dialog, those Print Options which have been saved with the spool request will be processed.

### 3. 1. Restrictions

Print Options in SP01 can only be set for spool requests created by SAPscript or Smart Forms holding OTF data. Print Options cannot be set for other types of documents (e.g. ABAP lists, RDI output, XSF, XDF, SAP Interactive Forms). The output request must be created for an output device which supports Print Options.

### 4. List of available Print Options

SAP has defined a list of Print Options which can be supported in a device type. In addition, three vendor-specific options can be supported.

Option	Option Values
Input Tray	01-99, No Selection
Output Tray	01-99, No Selection
Colour	Print in Color Print in Black&White No Selection  It is used for colour printers only. It allows you to define the commands that switch on/off the colour printing mode
Duplex	Double-Sided, long edge binding Double-Sided, short edge binding Single-Sided No Selection  It is used for printers with duplex printing capability. <ul style="list-style-type: none"> <li>• Duplex, Long Edge Binding It is for the double-sided printing. The printed result is like a normal portrait oriented magazine. It is sometimes called "flip on long edge".</li> <li>• Duplex, Short Edge Binding It is also for the double-sided printing. The printed result is like a wall-hung calendar. It is sometimes called "flip on short edge".</li> <li>• Simplex It is for single-sided printing.</li> </ul> If a printer does not have two duplex printing modes, you can define "Duplex, Long Edge Binding" part and leave "Duplex, Short Edge Binding" fields empty.
Job Separation	Activated, No Selection
Page Binding	Activated, No Selection
Punching	01-99, No Selection  Some high-end printers have punching capability. You can define four punching commands here. For example, (i) punching two holes at the left edge, (ii) punching three holes at the left edge, (iii) punching two holes at the top edge and (iv) punching three holes at the top edge.
Stapling	01-99, No Selection  Some high-end printers have stapling capability. You can define four stapling commands here. For example,



	(i) stapling at top-left corner, (ii) stapling at top-right corner, (iii) stapling at bottom-left corner and (iv) stapling at bottom-right corner.
User Password	<user-string>, No selection You can define a command that triggers a printer to demand a password to print a certain job.
Vendor Defined #1	Activated, No Selection
Vendor Defined #2	Activated, No Selection

Vendor Defined #3	Activated, No Selection
Vendor Defined List #1	<p>This is a vendor-defined list option, which can have up to 99 different option values (plus No Selection)</p> <p>This option was not available in the initial implementation but was added later. Note <a href="#">1354067</a> lists SAP software requirements for this option to be available..</p>
Vendor Defined List #2	<p>This is a vendor-defined list option, which can have up to 99 different option values (plus No Selection)</p> <p>This option is not available in the initial implementation but was added later. Note <a href="#">1354067</a> lists SAP software requirements for this option to be available.</p>
Vendor Defined List #3	<p>This is a vendor-defined list option, which can have up to 99 different option values (plus No Selection)</p> <p>This option was not available in the initial implementation but was added later. Note <a href="#">1354067</a> lists SAP software requirements for this option to be available.</p>
Vendor Defined Input Field #1	<p>This is a vendor-defined input field. The purpose of this field and its length and the set of allowed characters are defined by the vendor.</p> <p>This option was not available in the initial implementation but was added later. Note <a href="#">1354067</a> lists SAP software requirements for this option to be available.</p>
Vendor Defined Input Field #2	<p>This is a vendor-defined input field. The purpose of this field and its length and the set of allowed characters are defined by the vendor.</p> <p>This option was not available in the initial implementation but was added later. Note <a href="#">1354067</a> lists SAP software requirements for this option to be available.</p>
Vendor Defined Input Field #3	<p>This is a vendor-defined input field. The purpose of this field and its length and the set of allowed characters are defined by the vendor.</p> <p>This option was not available in the initial implementation but was added later. Note <a href="#">1354067</a> lists SAP software requirements for this option to be available.</p>

## 5. Precedence of Print Options

In a SAPscript or Smart Forms document (i.e. in the form), it is also possible to specify input tray and double-sided printing when printing directly (Print Mode). If you print a spool request

with **user-specified** print options, which has any of these print options set **via the form**, the **user-specified** options override the settings **from the form** (i.e. input tray and print mode settings from the form are ignored).

**User-specified** Print Options also override the possible input tray and double-sided printing settings from transaction SPAD for an output device (tabstrip: *Output Attributes*). When you print a spool request on a printer which has 'Input Tray' and/or 'Double-Sided' printing set in SPAD, the SPAD-settings are ignored when user-specified Print Options are present.

Finally, please keep in mind that POSS print option settings only affect SAPscript and Smart Forms documents. POSS options do not affect other types of print documents, for example ABAP lists/ALV lists or SAP Interactive Forms by Adobe (IfbA).