

How to Customize ESS Personal Information Applications in Web Dynpro Java using NWDI



Applies to:

Employee Self Service – ECC 6.0 EhP4, Web Dynpro for Java 7.0 (NW04s)

Summary

This document gives a detailed guide of how to customize a country-specific ESS Personal Information application like personal details using NWDI without having to change the standard code provided by SAP. The same method can be applied for address details, bank details as well as family members/dependants applications in the Personal Information area.

Author: Vaishnavi PE

Company: PricewaterhouseCoopers Private Limited

Created on: September 7, 2011

Author Bio



Vaishnavi PE is an SAP NetWeaver Portal Consultant from PricewaterhouseCoopers Private Ltd, with more than 5.5 years of experience in the IT industry. Her work has involved composite application development with Web Dynpro Java; SAP ESS and portal administration.

Table of Contents

Introduction	3
Creating the new DC	3
Sync sources of template DC	5
Creating the WD Components in the new DC	6
Recreating the model in the new DC	9
Resolving errors in the new DC	11
Changing the loadConfiguration() method.....	11
Changing the application properties	12
Changing the VAC in the overview component.....	13
Building the new DC and testing the application	13
Using the new ESS application.....	14
On the Portal side	14
On the SAP R3 side	14
Related Content	16
Disclaimer and Liability Notice	17

Introduction

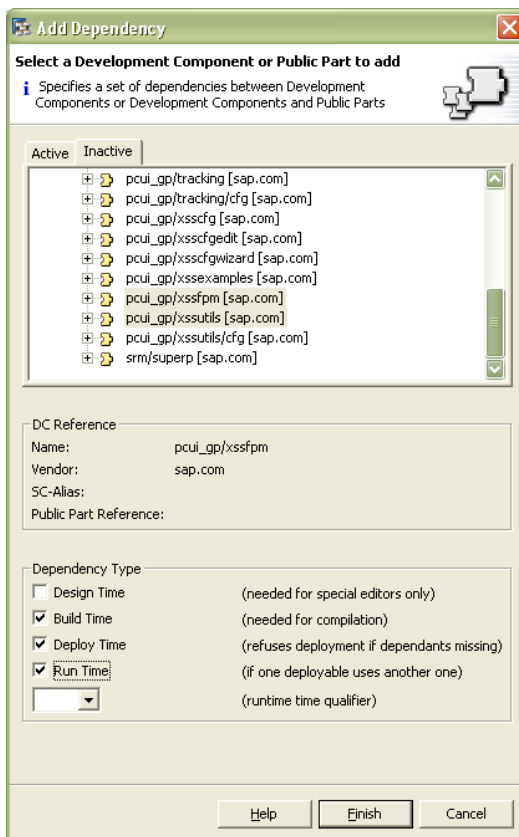
In the business package for ESS given by SAP, one of the areas is Personal Information. This comprises of country-specific applications like Personal Data, Address Details, Bank Details and Family Members/Dependents.

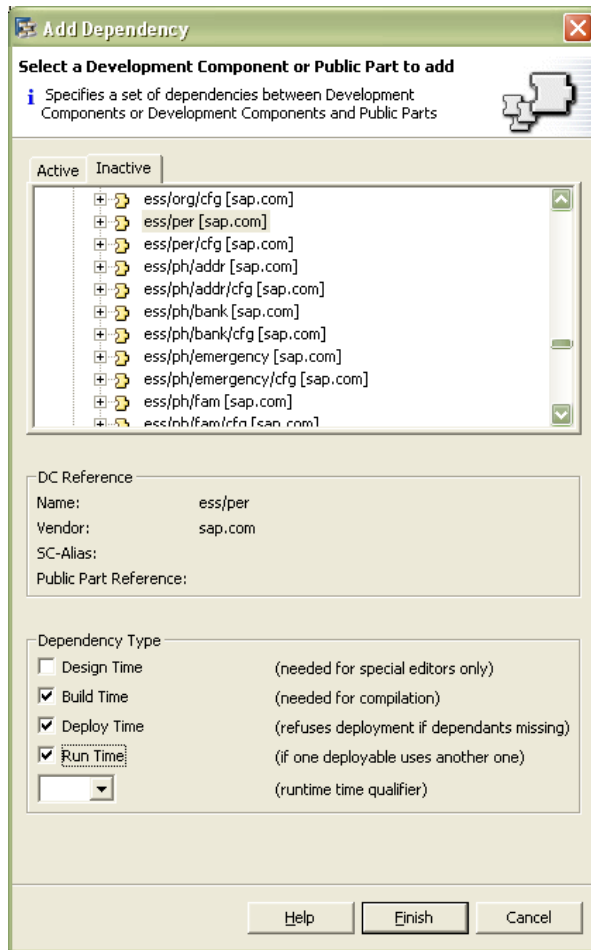
In a scenario where you need to customize any of the above applications via code, this document describes the steps in creating a new DC to achieve the same. In this way, we do not tamper the original DCs provided by SAP and still create a customized application. As an example, I have used the Canada Personal Data DC as a template in this document. The original DC name is `ess~ca~pdata`.

The assumptions are that the tracks have been configured in NWDI and the ESS business package is installed.

Creating the new DC

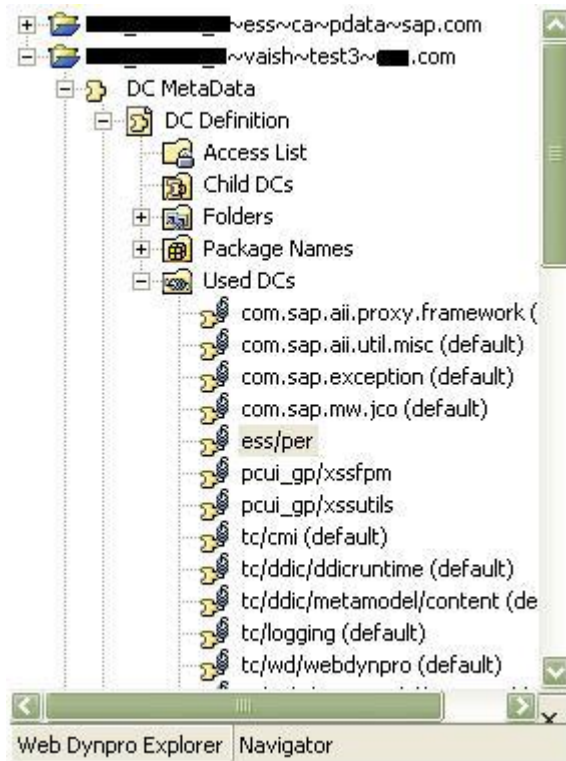
1. Create a new DC in the development track in a different namespace (could be the client name; do not leave it as `sap.com`). The test DC I have created here is `vaish~test3`. Create this in a new activity when it is prompted.
2. Add the following DCs as dependencies to your own DC to the Used DCs list:
 - `pcui_gp~xssfpm`
 - `pcui_gp~xssutils`
 - `ess/per`





Select all checkboxes except Design Time in the dependency type.

Note: When customizing a country-specific Bank Details DC, add ess/xx and ess/xx/bank as Used DCs depending on the DC you are trying to copy.

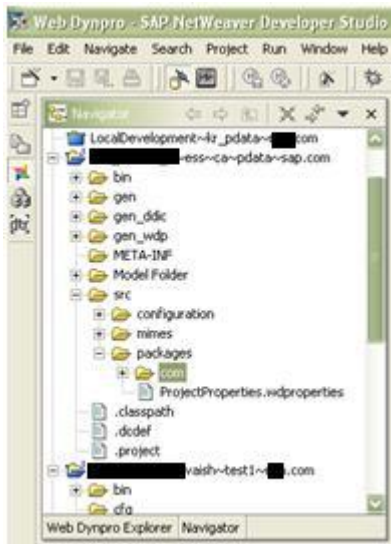


Sync sources of template DC

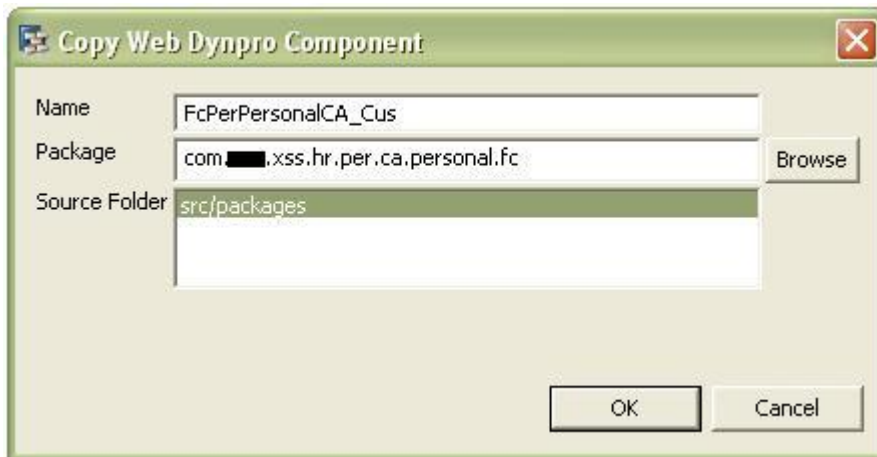
1. From the development track, find the template DC which we will be using i.e. ess-ca-pdata and sync sources.
2. Create the project once the sync is complete.

Creating the WD Components in the new DC

1. In the Web Dynpro perspective, click on the Navigator tab. Expand the 'src' folder in the template DC. Copy the content inside the 'packages' folder and paste it in the 'packages' folder in the newly created DC (vaish~test3). Add this into the same activity in NWDI if prompted.

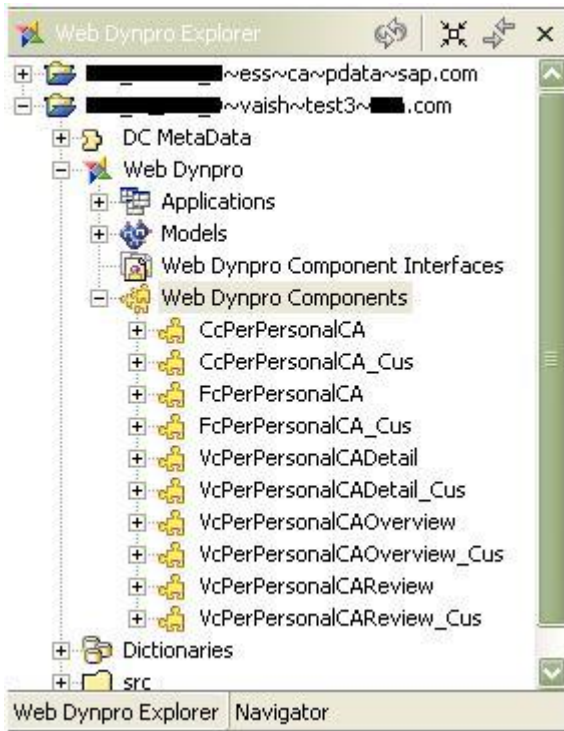


2. Right click on the DC and refresh it.
3. Going back to the Web Dynpro Explorer tab, right click on the new DC and repair and reload the DC.
4. Once this is done, when you expand the DC, you see that the DC has been loaded with the content of the template DC.
5. Now, copy the Web Dynpro Components one by one and while pasting them, change the name as well as the package folder. Add this into the same activity in NWDI if prompted.

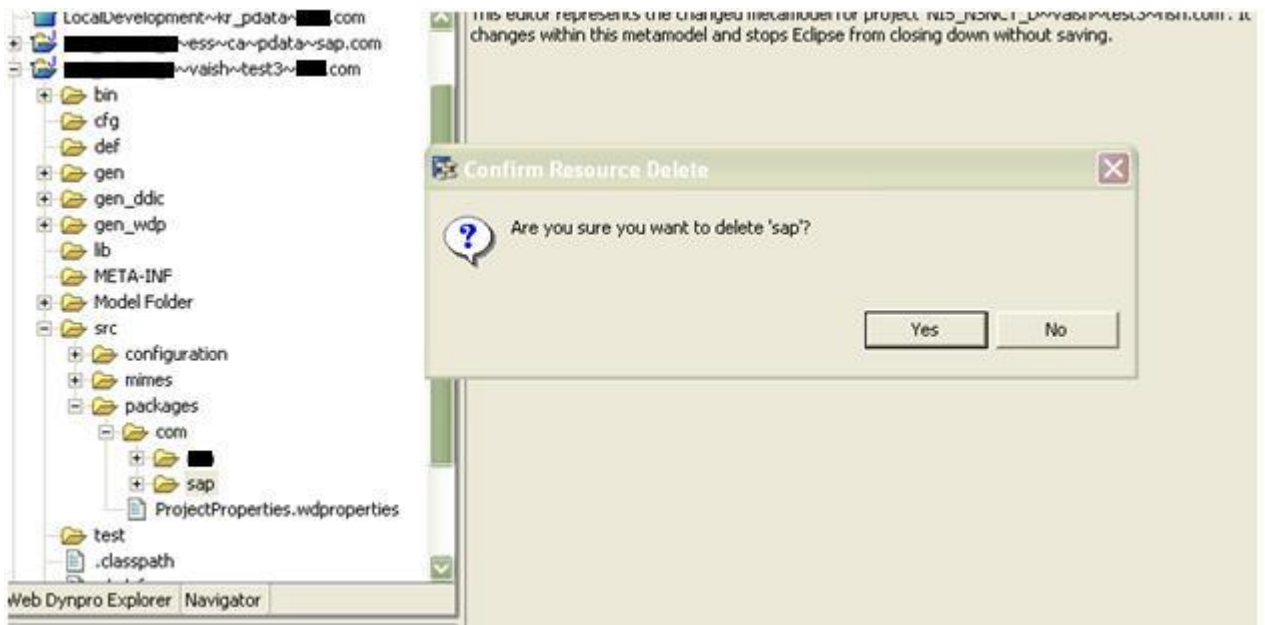


(For example, change the name from FcPerPersonalCA to FcPerPersonalCA_Cus and change the package folder by giving the client name).

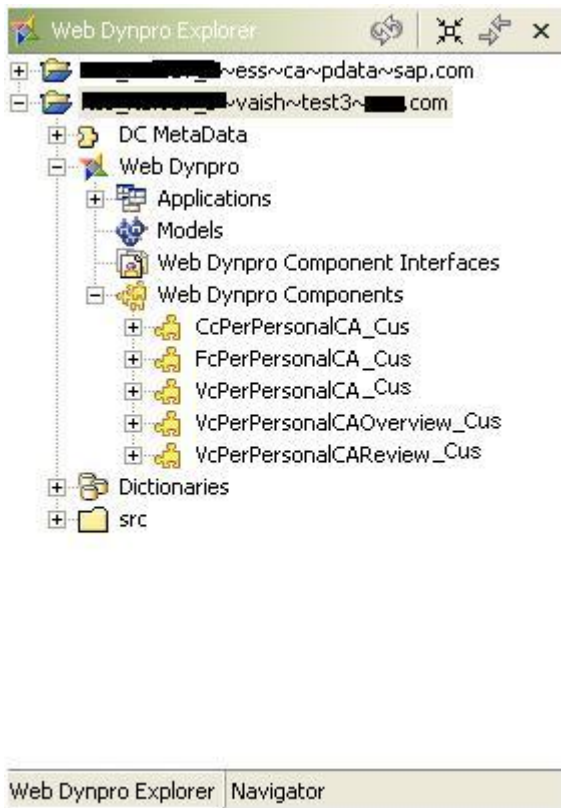
6. Once you have copied and pasted all the components, the DC would look like as shown below.



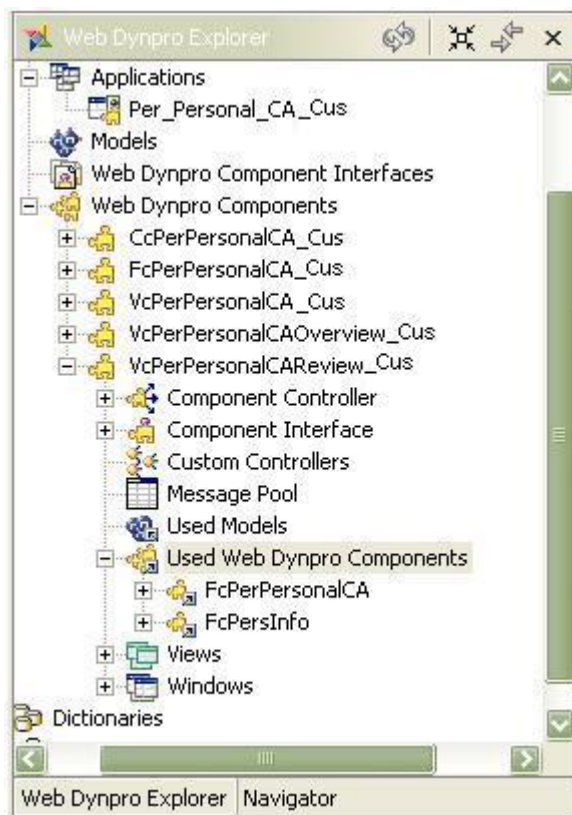
7. Copy the application and paste it in the same manner by changing the name and package folder.
8. In the navigator tab, expand the new DC, navigate to src → packages → com and delete the 'sap' folder here.

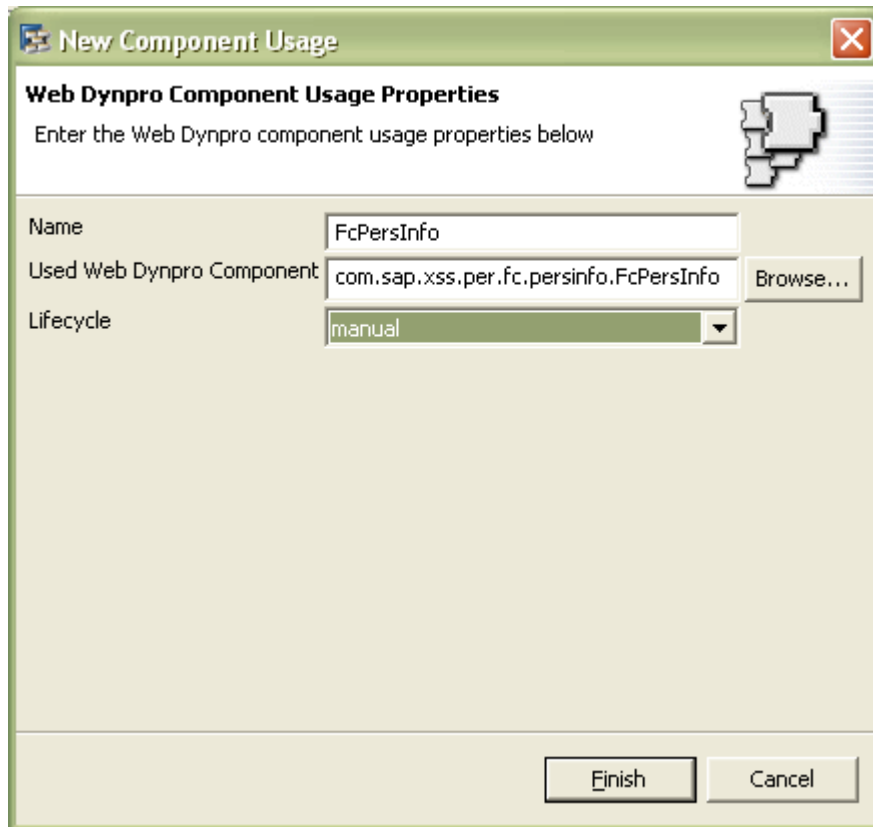


9. Refresh, reload and rebuild the DC.



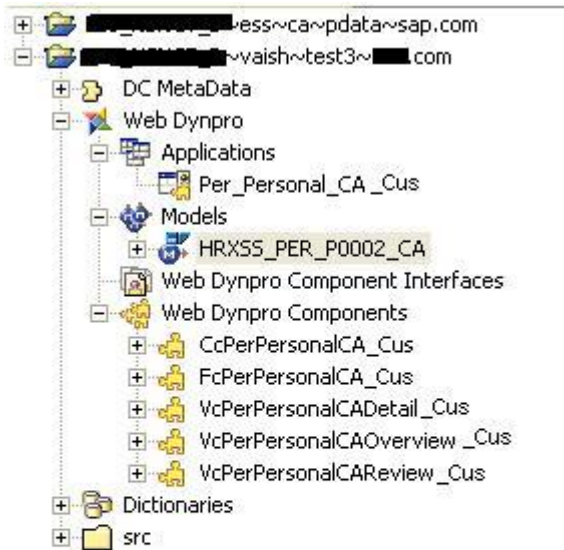
10. In each of the web Dynpro components, resolve the used WD components if there are errors.





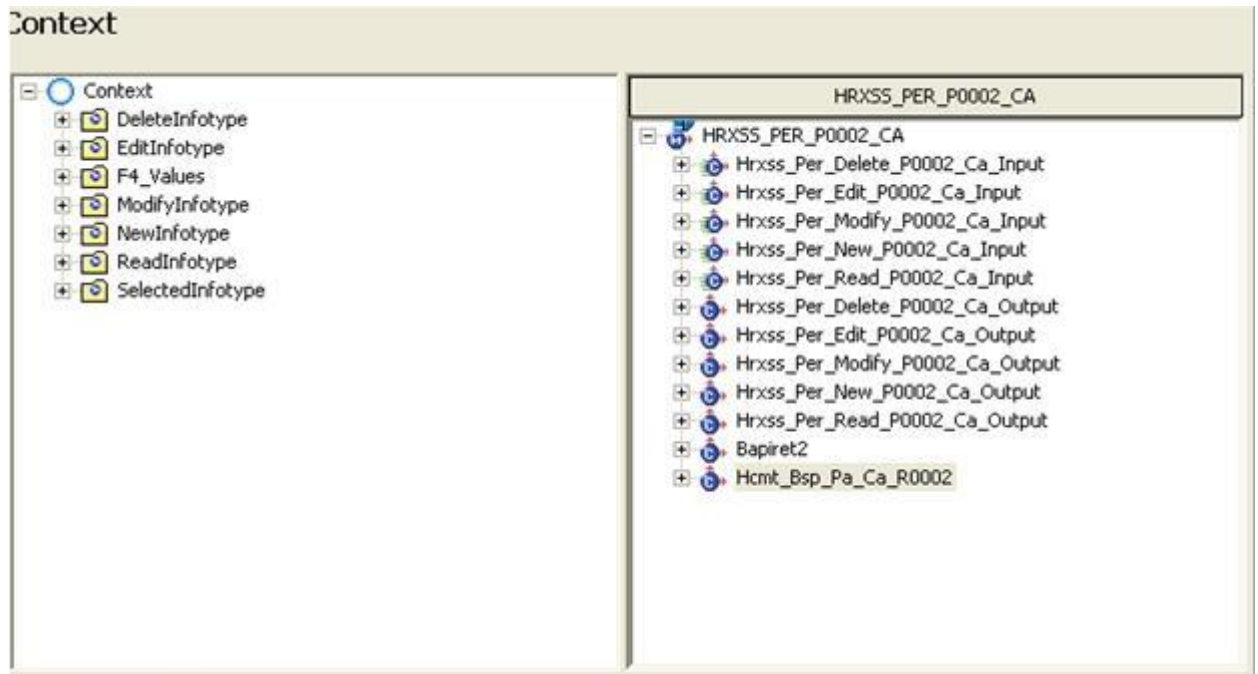
Recreating the model in the new DC

1. Import the model into the DC keeping the same name as in the template DC.
2. Use the following JCoS when creating the model:
 - SAP_R3_HumanResources
 - SAP_R3_HumanResources_MetaData



Web Dynpro Explorer Navigator

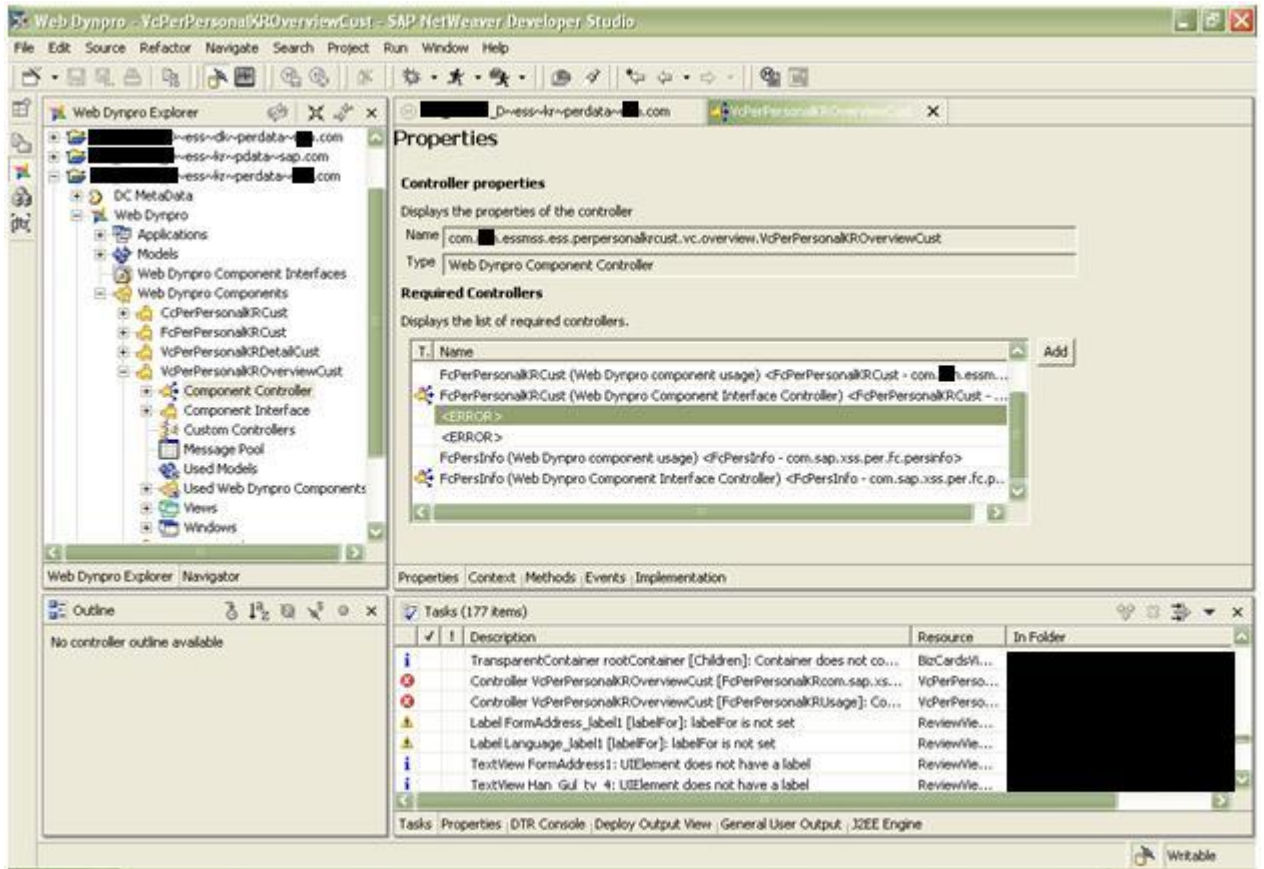
3. Add the used models in all the components where necessary by comparing with the template DC.
4. Resolve the context model node binding in all the components.



Note: Bind the model node named 'SelectedInfotype' with 'Hcmt_Bsp_Pa_Ca_R0002'.

Resolving errors in the new DC

- Next, resolve the errors in the required controllers of all Web Dynpro components. (Open the component controller of each component and check the 'Properties' tab for errors).



Note: Screenshot above taken from a different DC

- Right-click on the <ERROR> in the required controllers and delete. Use the option 'Delete All' when it prompts for deleting the error.

Changing the loadConfiguration() method

- Open the interface controller in the CcPerPersonalCA_Cus component and make the following changes in the loadConfiguration() method:
 - The first string parameter being passed should be the name of the newly created DC in place of the standard DC name
 - The second string parameter being passed should be the name of the overview component name with the full path
 - The third string parameter being passed should be the name of the detail component name with the full path
 - The fourth string parameter being passed should be the name of the review component name with the full path

Example code shown below:

```
Helper = new CcHelper (fpm,wdThis.wdGetAPI(),
```

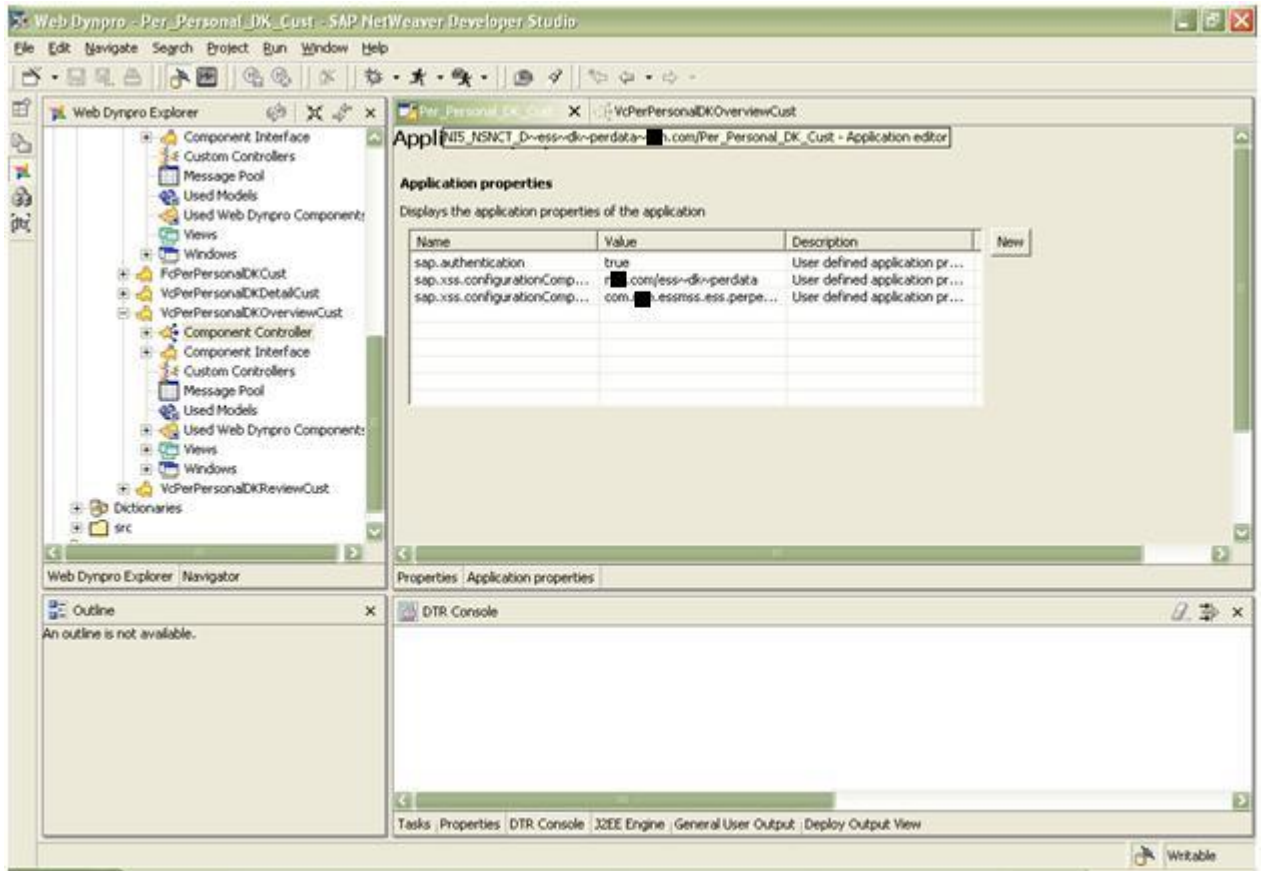
```

"abc.com/vaish~test3",
"com.abc.essmss.ess.perpersonalcacust.vc.overview.VcPerPersonalCAOverview_Cus",
"com.abc.essmss.ess.perpersonalcacust.vc.detail.VcPerPersonalCADetail_Cus",
"com.abc.essmss.ess.perpersonalcacust.vc.review.VcPerPersonalCARReview_Cus");

```

Changing the application properties

1. Open the application in the new DC and navigate to the Application Properties tab.



Change the following properties:

- sap.xss.configurationComponentDC = <namespace>.com/<name of the new DC>
(ex: abc.com/vaish~test3)
- sap.xss.configurationComponentName = <name of the Cc Component name with full path> (ex:
com.abc.essmss.ess.perpersonalcacust.cc.CcPerPersonalCA_Cus)

Note: There would be other application properties – these need to be deleted. The application works without them.

Changing the VAC in the overview component

1. Open the component controller of the VcPerPersonalCAOverview_Cus component.
2. In the 'others' section of the code, change the value of the VAC with the name of the newly created DC and the Overview component name with full path (example code shown below).

```
VAC thisVAC = new VAC("abc.com/vaish~test3",  
"com.abc.essmss.ess.perpersonalcacust.vc.overview.VcPerPersonalCAOverview_Cus");
```

Building the new DC and testing the application

1. All the necessary resolutions have been done and it is time to build the newly created DC.
2. Build and deploy the DC onto the portal server.
3. Test the application from the portal, login with administration rights and navigate to Content Administration → Web Dynpro → Deployed Content → <namespace> → <DC name> → Applications → <ApplicationName> and run the application
4. Now that the new application has been configured, the views inside the newly created DC can be customized as per requirements without having to change the code in the standard SAP provided DC.
5. Checkin the activity in NWDI.

Using the new ESS application

On the Portal side

Once the DC is deployed on the server, the application is available to be used in an iView.

1. Create an iView using this application.
2. Assign the iView to a Page.
3. Assign the Page to the ESS Workset.
4. Ensure that the workset is assigned to the ESS Role which is finally being used.

On the SAP R3 side

1. In the SPRO settings for the ESS configuration, navigate to Personnel Management → Employee Self-Service → General Settings → Homepage for Self-Services → Resources → Define Resources

Change View "Define Resources (Add Entries)": Overview

Resource Object Key	Description
EMPLOYEE_PERSDATA_BR_SERVICE	PersInfo: Brazil Personal Data Service
EMPLOYEE_PERSDATA_BR_SERVICE05	PersInfo: Brazil Personal Data Service
EMPLOYEE_PERSDATA_BR_SERVICE_13	PersInfo: Brazil Personal Data Service
EMPLOYEE_PERSDATA_CA_SERVICE	PersInfo: Canada Personal Data Service
EMPLOYEE_PERSDATA_CA_SERVICE05	PersInfo: Canada Personal Data Service
EMPLOYEE_PERSDATA_CA_SERVICE_13	PersInfo: Canada Personal Data Service
EMPLOYEE_PERSDATA_CH_SERVICE	PersInfo: Switzerland Personal Data Service
EMPLOYEE_PERSDATA_CH_SERVICE05	PersInfo: Switzerland Personal Data Service
EMPLOYEE_PERSDATA_CH_SERVICE_13	PersInfo: Switzerland Personal Data Service
EMPLOYEE_PERSDATA_CN_SERVICE	PersInfo: China Personal Data Service
EMPLOYEE_PERSDATA_CN_SERVICE05	PersInfo: China Personal Data Service
EMPLOYEE_PERSDATA_CN_SERVICE_13	PersInfo: China Personal Data Service
EMPLOYEE_PERSDATA_DE_SERVICE	PersInfo: German Personal Data Service
EMPLOYEE_PERSDATA_DE_SERVICE05	PersInfo: German Personal Data Service
EMPLOYEE_PERSDATA_DE_SERVICE_13	PersInfo: German Personal Data Service
EMPLOYEE_PERSDATA_DK_SERVICE	PersInfo: Denmark Personal Data Service
EMPLOYEE_PERSDATA_DK_SERVICE05	PersInfo: Denmark Personal Data Service
EMPLOYEE_PERSDATA_DK_SERVICE_13	PersInfo: Denmark Personal Data Service
EMPLOYEE_PERSDATA_ES_SERVICE	PersInfo: Spain Personal Data Service
EMPLOYEE_PERSDATA_ES_SERVICE05	PersInfo: Spain Personal Data Service
EMPLOYEE_PERSDATA_ES_SERVICE_13	PersInfo: Spain Personal Data Service
EMPLOYEE_PERSDATA_FI_SERVICE05	PersInfo: Finland Personal Data Service
EMPLOYEE_PERSDATA_FI_SERVICE_13	PersInfo: Finland Personal Data Service

- Find the service for Canada's Personal Data and change the PCD of the page containing the new iView for the country-specific resource. (The snapshot below shows the original PCD which needs to be replaced with the new PCD URL).

Change View "Define Resources (Add Entries)": Details

New Entries

Resource Key

Define Resources (Add Entries)

Description	PersInfo: Canada Personal Data Service
Server	<input style="width: 90%;" type="text"/>
Directory Path	sap.com/ess~ca~pdata
Object Name	Per_Personal_CA
URL Parameter	<input style="width: 90%;" type="text"/>
Window Name	<input style="width: 90%;" type="text"/>
Window Properties	<input style="width: 90%;" type="text"/>

URL of Resource Object

Li 1, Co 1
Ln 1 - Ln 1 of 1 lines

URL of PCD Page

PCD Page Static

Li 1, Co 1
Ln 1 - Ln 2 of 2 lines

Related Content

[Documentation on Business Package for ESS](#)

Disclaimer and Liability Notice

This document may discuss sample coding or other information that does not include SAP official interfaces and therefore is not supported by SAP. Changes made based on this information are not supported and can be overwritten during an upgrade.

SAP will not be held liable for any damages caused by using or misusing the information, code or methods suggested in this document, and anyone using these methods does so at his/her own risk.

SAP offers no guarantees and assumes no responsibility or liability of any type with respect to the content of this technical article or code sample, including any liability resulting from incompatibility between the content within this document and the materials and services offered by SAP. You agree that you will not hold, or seek to hold, SAP responsible or liable with respect to the content of this document.