

Crystal Reports XI Release 2

Creating Reports with Microsoft Office 2007 Data Files

Overview

This document explains how use the new Office 2007 ODBC and OLE DB drivers with Crystal Reports so that reports can be created on data stored in these new Office file types.

Contents

INTRODUCTION	1
GETTING MICROSOFT'S OFFICE 2007 DATA DRIVERS	1
USING THE OFFICE 2007 ODBC DRIVER WITH CRYSTAL REPORTS	1
DSN-FREE ODBC	2
USING THE OFFICE 2007 OLE DB DRIVER WITH CRYSTAL REPORTS	3
FINDING MORE INFORMATION.....	4

Introduction

Microsoft introduced new file formats with Office 2007. New Excel 2007 file types have the file extensions .xlsx (XML) and .xlsb (binary) and the new Access 2007 format has the extension .accdb. The traditional files with XLS (Excel) and MDB (Access) extensions can still be created and used by Office 2007 but are considered older formats and may not be able to store all the new features introduced in the Excel 2007 and Access 2007. For example, Excel 2007 supports many more rows than previous versions. Such a large spreadsheet cannot be stored in an XLS file.

Getting Microsoft's Office 2007 Data Drivers

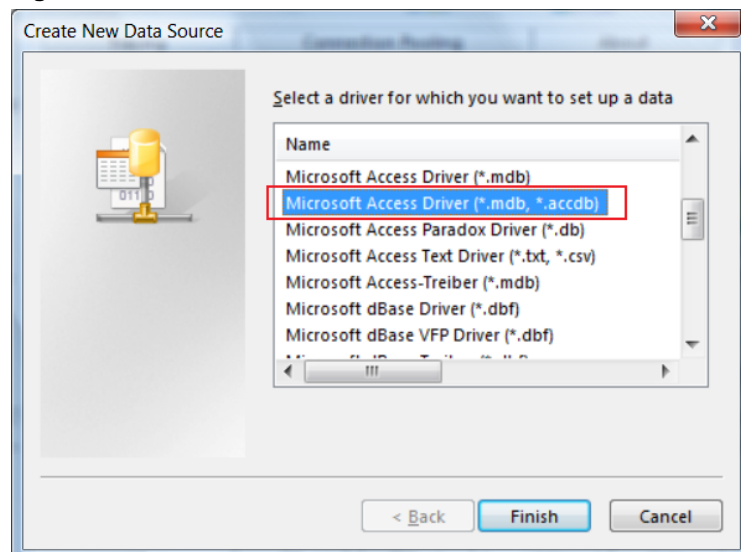
The traditional data access methods for XLS and MDB files has been DAO, as exposed by the Microsoft Jet engine. DAO and Jet have long since been deprecated and are unable to open the new Office 2007 file types. In order for applications to open Excel 2007 and Access 2007 files, new ODBC and OLE DB drivers have been made available by Microsoft.

The Office 2007 ODBC and OLE DB drivers are installed with Office 2007. They can also be obtained for free from the Office Web site by downloading the [2007 Office System Driver: Data Connectivity Components](#). These drivers are designed to work on versions of Windows that support Office 2007 such as Windows XP, 2003, and Vista.

Using the Office 2007 ODBC Driver with Crystal Reports

The traditional method of working with ODBC works as expected. Set up a **System DSN** and select it in the Crystal Reports ODBC connection wizard. When creating the DSN, select the driver that has the desired file extension for the type of file to be reported on. Access 2007 files have the .accdb extension. Excel 2007 files have the extension .xlsx and .xlsb.

Figure 1

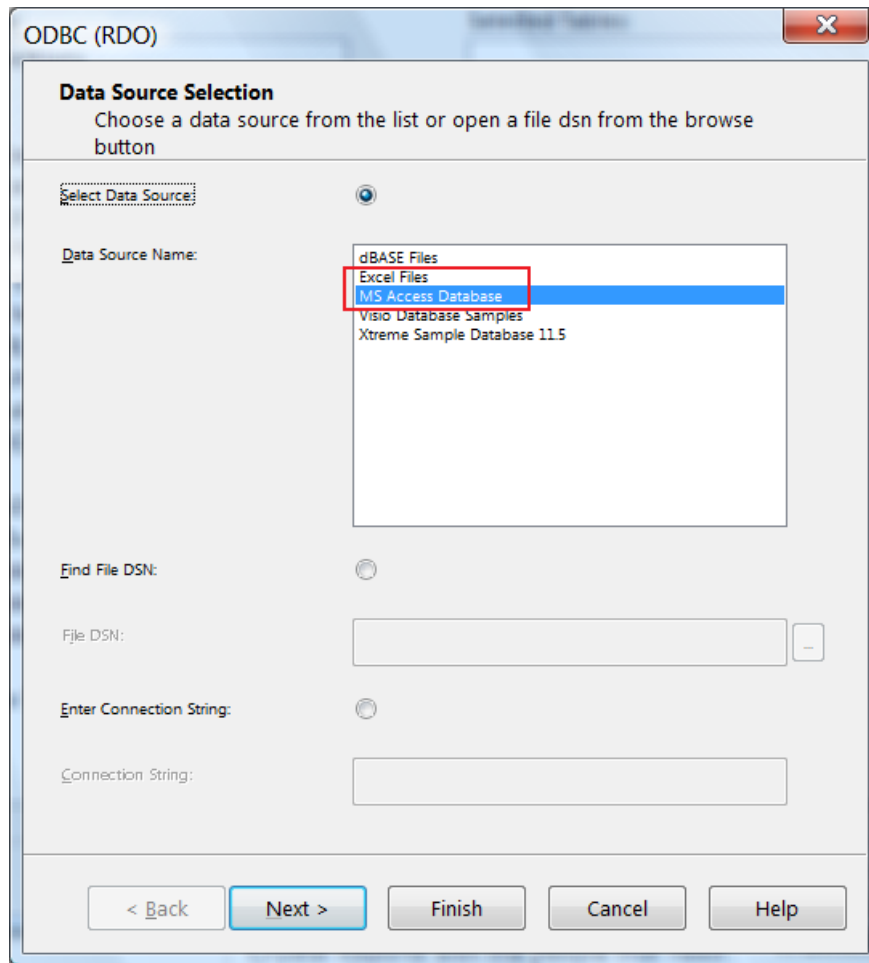


DSN-Free ODBC

For quick reporting against Office 2007 files, do the following:

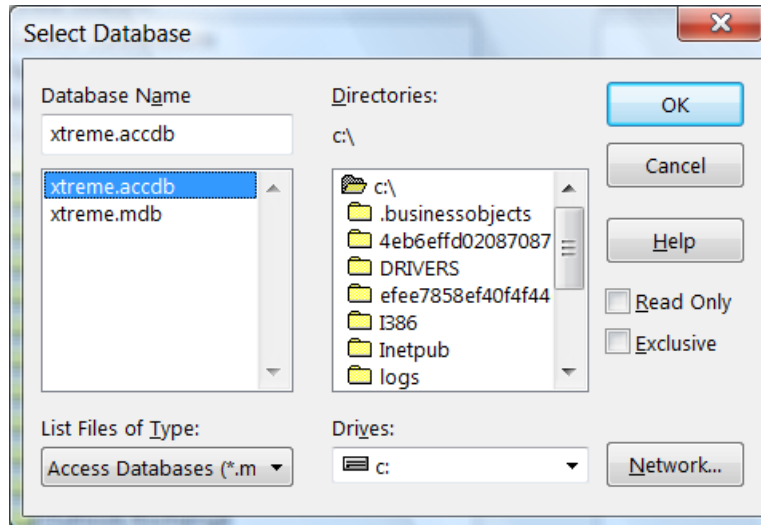
1. Select the new **Excel Files** and **MS Access Database** ODBC DSN entries created by the drivers as shown here:

Figure 2



2. Click **Finish**.
3. Select the Excel or Access file displayed accordingly in the **Select Database** window as shown here:

Figure 3



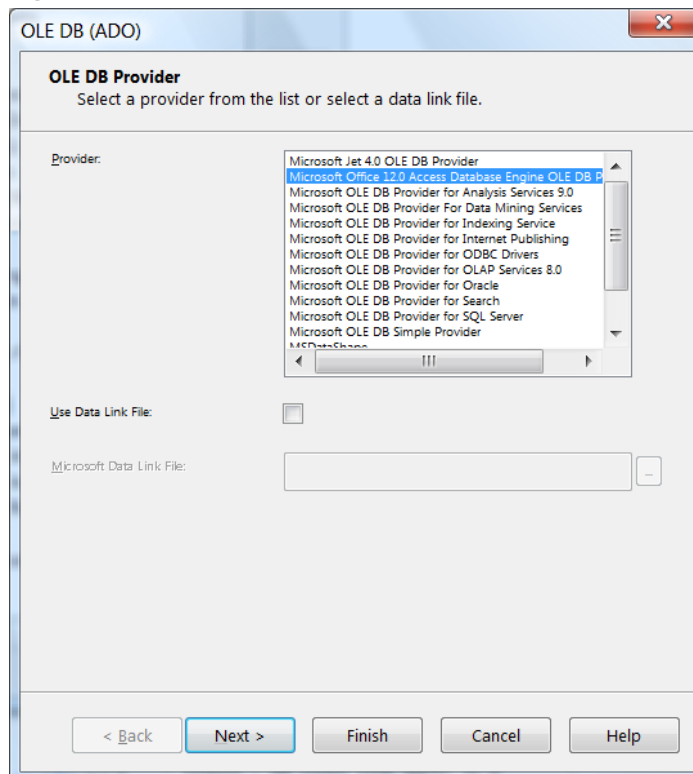
4. Click **OK**. This should complete the connection, storing the ODBC connection information inside the report.

Using the Office 2007 OLE DB Driver with Crystal Reports

Using the OLE DB driver with Crystal Reports is straight forward for connecting to Access. To connect to an Access file in the Crystal Reports OLE DB wizard do the following:

1. Select **Microsoft Office 12.0 Access Database Engine OLE DB Provider**, as shown below:

Figure 4



2. Click **Next** to enter the connection information.
3. When prompted for the connection information, enter the path to the Access file, as shown here:

Figure 5

OLE DB (ADO)

Connection Information
Provide necessary information to log on to the chosen data source.

Data Source: C:\xtreme.accdb

User ID:

Password:

Jet System Database:

Jet Database Password:

< Back Next > Finish Cancel Help

4. Click **Finish** to complete the OLE DB connection.

Finding more information

For more information and resources, refer to the product documentation and visit the support area of the web site at

<http://www.businessobjects.com/>

► www.businessobjects.com

No part of the computer software or this document may be reproduced or transmitted in any form or by any means, electronic or mechanical, including photocopying, recording, or by any information storage and retrieval system, without permission in writing from Business Objects.

The information in this document is subject to change without notice. Business Objects does not warrant that this document is error free.

This software and documentation is commercial computer software under Federal Acquisition regulations, and is provided only under the Restricted Rights of the Federal Acquisition Regulations applicable to commercial computer software provided at private expense. The use, duplication, or disclosure by the U.S. Government is subject to restrictions set forth in subdivision (c) (1) (ii) of the Rights in Technical Data and Computer Software clause at 252.227-7013.

The Business Objects product and technology are protected by US patent numbers 5,555,403; 6,247,008; 6,578,027; 6,490,593; and 6,289,352. The Business Objects logo, the Business Objects tagline, BusinessObjects, BusinessObjects Broadcast Agent, BusinessQuery, Crystal Analysis, Crystal Analysis Holos, Crystal Applications, Crystal Enterprise, Crystal Info, Crystal Reports, Rapid Mart, and WebIntelligence are trademarks or registered trademarks of Business Objects SA in the United States and/or other countries. Various product and service names referenced herein may be trademarks of Business Objects SA. All other company, product, or brand names mentioned herein, may be the trademarks of their respective owners. Specifications subject to change without notice. Not responsible for errors or omissions.

Copyright © 2007 Business Objects SA. All rights reserved.