

UWL Configuration - Enterprise Portal 7.0



Applies to:

Enterprise Portal 7.0

Summary

This exercise is as follows:

1. UWL Configuration
2. UWL Test in Portal
3. Resolving Error [not one of the possible agents of task]

Author: Sushil Kumar Jain

Company: Accenture Services Pvt. Ltd.

Created on: 18 September 2008

Author Bio



Sushil Kumar Jain is an IT professional from India. He is working in Accenture Services Pvt. Ltd. Has good knowledge on SAP NetWeaver and is specialized in Enterprise Portal. Has extensively worked in building ESS/MSS applications for SAP-HR Successfully customized the Portal during many assignments.

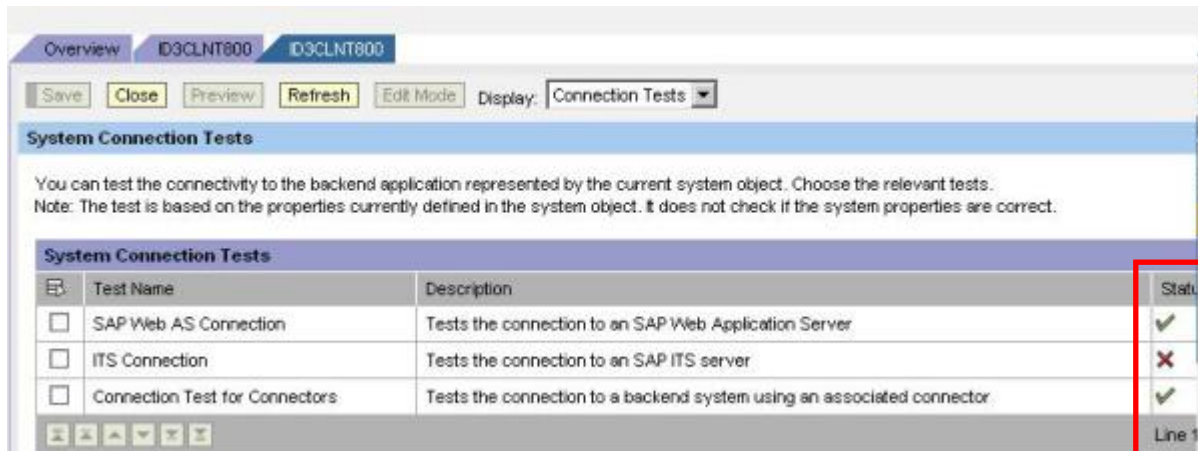
Table of Contents

UWL Configuration	3
Test System connection test is passing.....	3
Register 'webflowconnector'	3
Create New System Connection	3
Register 'webflowconnector'.....	4
Webflow and Task ID	4
Connection Error	5
WorkFlow Template in IMG	5
UWL test scenario steps.....	5
Prerequisite	5
Applies for leave.....	5
ESS Leave Request.....	5
Leave Approval	7
Manager Received Leave Request	7
Assign Agents for Tasks	9
Error Appearing.....	9
Solution / Procedure:.....	9
In the SAP HCM System choose:	9
Choose Other Workflow/version (Ctrl + F5) button	9
Choose Task.....	9
Choose Enter to continue.	10
Update Index.....	10
Disclaimer and Liability Notice.....	11

UWL Configuration

Test System connection test is passing

Screen below shows working system passing SAP Web AS Connection and Connection Test for Connectors test condition. [If you are facing any issues make sure the User mapping is done correctly.]

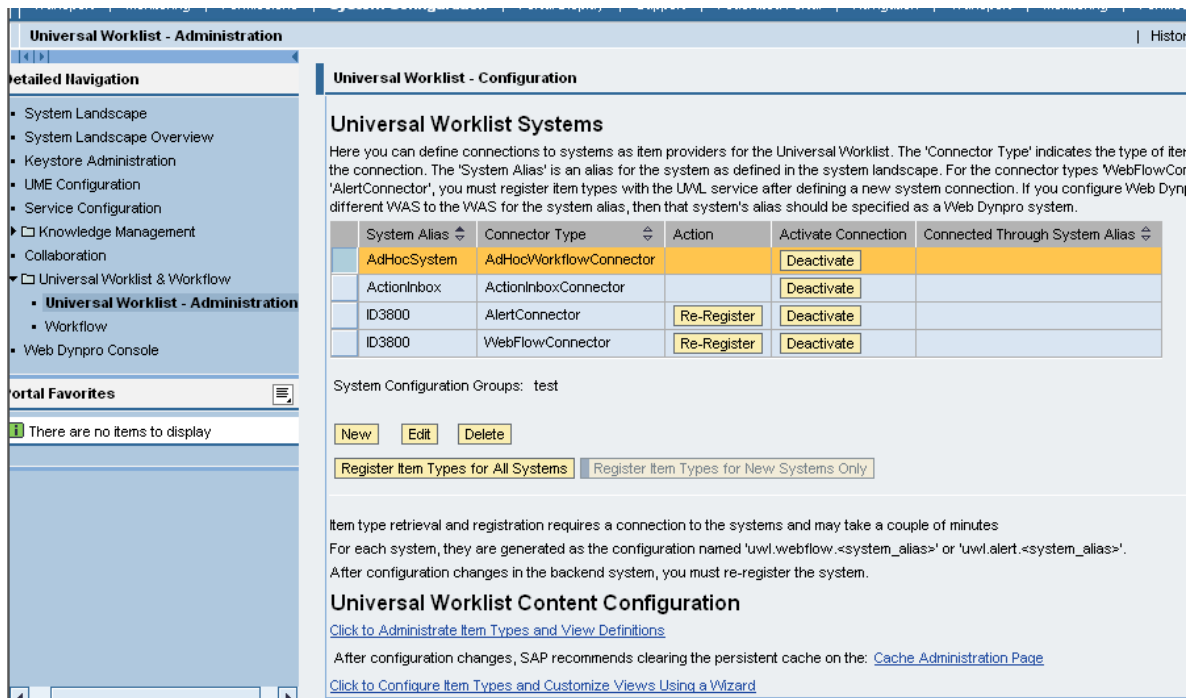


Register 'webflowconnector'

Once system connection test is done as shown above, we need to register 'webflowconnector',

Create New System Connection

Navigate to System Administration -> System Configuration -> Universal Worklist and Workflow-> Universal Worklist Administration [Click on new button and create a connector and assign System Alias].



Edit the System ID3800@WebFlowConnector

System Alias: *

Connector Type: *

Web Dynpro Launch System:

User Roles:

System Configuration Groups:

Delta Pull Channel Refresh Period (in Seconds):

Delta Pull Channel Snapshot Refresh Period (in Minutes):

Register 'webflowconnector'

After saving will have to register 'webflowconnector'

Universal Worklist Systems

Here you can define connections to systems as item providers for the Universal Worklist. The 'Connector Type' indicates the type of items retrieved through the connection. The 'System Alias' is an alias for the system as defined in the system landscape. For the connector types 'WebFlowConnector' or 'AlertConnector', you must register item types with the UWL service after defining a new system connection. If you configure Web Dynpro applications different to the WAS for the system alias, then that system's alias should be specified as a Web Dynpro system.

System Alias	Connector Type	Action	Activate Connection	Connected Through System Alias
AdHocSystem	AdHocWorkflowConnector		<input type="button" value="Deactivate"/>	
ActionInbox	ActionInboxConnector		<input type="button" value="Deactivate"/>	
ID3800	AlertConnector	<input type="button" value="Re-Register"/>	<input type="button" value="Deactivate"/>	
ID3800	WebFlowConnector	<input type="button" value="Re-Register"/>	<input type="button" value="Deactivate"/>	

Webflow and Task ID

On registering the system, in Universal Worklist Configuration Content, the registered webflow will appear with the task available in Portal server. UWL Content will appear like [uwl.webflow.<aliasname >]

Home | Home | Guided Procedures | Employee Self-Service | Manager Self-Service | Collaboration | Content Administration | Accessible Content Administration | Content Management

Transport | Monitoring | Permissions | **System Configuration** | Portal Display | Support | Federated Portal | Navigation | Transport | Monitoring | Permissions | System

Universal Worklist - Content Configuration

History | Back | Forward

Current Configurations | Upload New Configuration | Reset Personalizations

Display or download the XML configurations here. Configurations with low priority are either shipped or generated by the Universal Worklist

Configuration Name	Priority	Zip Format	Modified Date	Remarks
aib	Medium	<input checked="" type="checkbox"/>	2008.08.07 09:37:24 AM	
uwl.gp.config	Medium	<input type="checkbox"/>	2008.05.06 03:32:47 PM	
com.sap.pct.erp.mss.tra	Medium	<input checked="" type="checkbox"/>	2008.05.26 10:39:08 AM	
com.sap.pct.erp.mss.001	Medium	<input checked="" type="checkbox"/>	2008.05.26 10:39:07 AM	
uwl.webflow.ID3800	Low	<input type="checkbox"/>	2008.08.07 08:39:24 AM	
uwl.standard	Low	<input type="checkbox"/>		
uwl.collaboration	Low	<input type="checkbox"/>		
uwl.alert.ID3800	Low	<input type="checkbox"/>	2008.08.07 06:10:03 AM	
uwl.webflow	Low	<input type="checkbox"/>		

XML Content is Displayed Below:

```
<item type="criteria" systemid="ID3800" externaltype="1300700042" connector="webflowconnector" />
<Actions>
<Action name="launchView" groupAction="" handler="ViewLauncher" returnToDetailViewAllowed="yes" launchInNewWindow="yes"
launchNewWindowFeatures="resizable=yes,scrollbars=yes,status=yes,toolbar=no,menubar=no,location=no,directories=no">
<Properties>
<Property name="view" value="portal_content/com.sap.pct/erp/erp_views/staffing/com.sap.pct.rpm.staffing.assignmentapproval"/>
<Property name="newWindowFeatures" value="resizable=yes,scrollbars=yes,status=yes,toolbar=no,menubar=no,directories=no"/>
<Property name="openInNewWindow" value="yes"/>
<Property name="display_order_priority" value="5"/>
</Properties>
<Descriptions default="" />
```

Connection Error

If there is any issue with connection, we will be able to view error message in UWL iView via message iView.

WorkFlow Template in IMG

In IMG 'Specify Processing Processes for types of leave' mention the workflow ID, Workflow ID is the workflow number after exclude prefix 'WS' from workflow number.

I have used standard SAP one step workflow approval process

Workflow Template	
<input checked="" type="checkbox"/> Process Request Using Workflow	
WF ID of New Request	12300111
WF ID of Cancellation Request	12300111
WF ID of Change Request	12300111

UWL test scenario steps

Prerequisite

- Make sure the required Org Structure is available.
- Employee and Manager are assigned [ID/number] via Communication infotype [105] and sub infotype [0001 (System user name)]
- For this document, I have considered Michael Lewis as Employee (Reporting to Susan Hill) and Susan Hill as Manager

Applies for leave

User Michael Lewis applies for leave

ESS Leave Request

User Michael Lewis applies for leave from ESS Leave Request.

1 **Display and Edit**
 2 **Review and Send**
 3 **Completed**

i Unable to determine next agent for user 10417218 on date 20080808

[▶ Show Team Calendar](#)
 [▼ Hide Calendar](#)
 [▶ Show Time Accounts](#)
 [▶ Show Overview of Leave](#)

◀ August 2008 September 2008 October 2008 ▶

August 2008							September 2008							October 2008								
Su	Mo	Tu	We	Th	Fr	Sa	Su	Mo	Tu	We	Th	Fr	Sa	Su	Mo	Tu	We	Th	Fr	Sa		
31	27	28	29	30	31	1	36	31	1	2	3	4	5	6	40	28	29	30	1	2	3	4
32	3	4	5	6	7	8	37	7	8	9	10	11	12	13	41	5	6	7	8	9	10	11
33	10	11	12	13	14	15	38	14	15	16	17	18	19	20	42	12	13	14	15	16	17	18
34	17	18	19	20	21	22	39	21	22	23	24	25	26	27	43	19	20	21	22	23	24	25
35	24	25	26	27	28	29	40	28	29	30	1	2	3	4	44	26	27	28	29	30	31	1
36	31	1	2	3	4	5	41	5	6	7	8	9	10	11	45	2	3	4	5	6	7	8

■ Absent
 ■ Multiple Entries
 ■ Sent
 ■ Deletion Requested

To request or report leave, enter the required data and choose Review.

Type of Leave:

Date: To

Duration: Hours

Approver:

Note for Approver:

Michael Lewis leave request review / submit Screen

Leave Request

1 **Display and Edit**
 2 **Review and Send**
 3 **Completed**

You want to request the following leave:

Type of Leave: Educational leave

Date: on Monday, August 11, 2008

Duration: 8 Hours

Used: Leave (Days): 1,00 Days

Approver: HILL SUSAN

Note for Approver:

To send the leave request to the next processor, choose Send. You can check the processing status of the request in the overview of leave.

Michael Lewis leave Completion Screen

Leave Request

1 2 3

Display and Edit Review and Send **Completed**

i The leave request has been sent.

What do you want to do next?

[Request Another Absence](#)

[Go to Working Time homepage](#)

[Go to Employee Self-Services homepage](#)

You have requested the following leave:

Type of Leave: Educational leave

Date: on Monday, August 11, 2008

Duration: 8 Hours

Used: Leave (Days): 1,00 Days

Approver: HILL SUSAN

Note for Approver:

Leave Approval

Manager Susan Hill approving User Michael Lewis leave

Manager Received Leave Request

User Michael Lewis Manager Susan Hill receives Leave request in UWL Tasks.

Inbox

Tasks (1 / 1) Alerts Notifications Tracking

Show: New and In Progress Tasks (1 / 1) Select a Subview... All

Create Task Show Filters Hide Preview

Subject	From	Sent	Priority	Due	Status
Michael Lewis's Leave Request	10144568,	Today	Normal	1	New

Michael Lewis's Leave Request

Sent: Today by 10144568, Priority: Normal

Status: New

Your worklist for approving leave requests contains a request that you have to process. For more information, see the worklist.

To view the worklist, start the Web application for approving leave requests.

Once you have processed the request, the work item will automatically be set to "completed."

You can also:

[Display Details in SAP Gui](#)

[Attachments Manager](#)

[Create Ad-Hoc Request](#)

[View History](#)

Attachments

[Document Database: W: DD6511E9ADC7C5F1831200058BBF46C](#)

Manager Susan Hill Selects Leave details either approves or rejects leave request.

1 **Display and Edit** 2 Review and Send 3 Completed

Show Team Calendar Hide Worklist

Requests waiting for approval						
	Date of Request	Requester	Type of Leave	From	To	Used
	8/8/2008	Michael Lewis	Educational leave	8/11/2008	8/11/2008	1 Days
	8/8/2008	Michael Lewis	Educational leave	8/8/2008	8/8/2008	1 Days

Row 1 of 2

Michael Lewis has requested the following leave:

Type of Leave: Educational leave

Date: 8/11/2008

Duration: 8 Hours

Used: Leave (Days): 1,00 Days

Previous Notes: Approve Leave

Time Account Deductible from Deductible to Entitlement Remainder

Previous Step Approve Reject

Manager Susan Hill approves leave request.

1 Display and Edit 2 **Review and Send** 3 Completed

Michael Lewis has requested the following leave:

Type of Leave: Educational leave

Date: on Monday, August 11, 2008

Duration: 8 Hours

Used: Leave (Days): 1,00 Days

Note for Requester: Approved

Previous Step Approve Request

Leave request for Michael Lewis posted in Backend.

1 Display and Edit 2 Review and Send 3 **Completed**

i You have approved the leave request.

You have approved the following leave request:

Requester: Michael Lewis
 Type of Leave: Educational leave
 Date: on Monday, August 11, 2008
 Duration: 8 Hours
 Used: Leave (Days): 1,00 Days

Note for Requester: Approved

Previous Notes: 08.08.2008 08:19:17 Michael Lewis Approve Leave

Assign Agents for Tasks

Assign Agents for Tasks & Resolving Error “not one of the possible agents of task”

Error Appearing

If you are getting error, Unable to send the request - You are not one of the possible agents of task WS12300111

Solution / Procedure:

Follow the below specified procedure:

In the SAP HCM System choose:

Transaction

SWDD

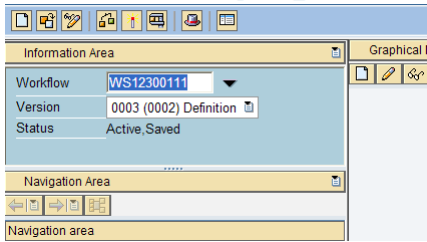
Choose Other Workflow/version (Ctrl + F5) button


Choose Task

In the Open other workflow definition, enter workflow number WS12300111. The active version 0003 should be selected.

Choose Enter to continue.

Workflow Builder - Change 'PT_TIMREQ'

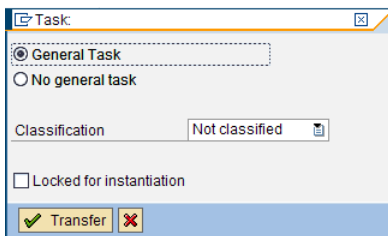


Choose the  Basic Data button (CTRL+F8).

Choose the  button (SHIFT+F9).

Choose Attributes.

Change the task to General task to allow every user to start this task.



Choose Transfer.

Update Index

On the *Workflow Template: Maintain Agent Assignment* screen, choose *Update Index* (Shift + F1). The system displays the message *Index was generated*.

Choose Back.

Choose Activate.

Choose Exit.

Disclaimer and Liability Notice

This document may discuss sample coding or other information that does not include SAP official interfaces and therefore is not supported by SAP. Changes made based on this information are not supported and can be overwritten during an upgrade.

SAP will not be held liable for any damages caused by using or misusing the information, code or methods suggested in this document, and anyone using these methods does so at his/her own risk.

SAP offers no guarantees and assumes no responsibility or liability of any type with respect to the content of this technical article or code sample, including any liability resulting from incompatibility between the content within this document and the materials and services offered by SAP. You agree that you will not hold, or seek to hold, SAP responsible or liable with respect to the content of this document.