

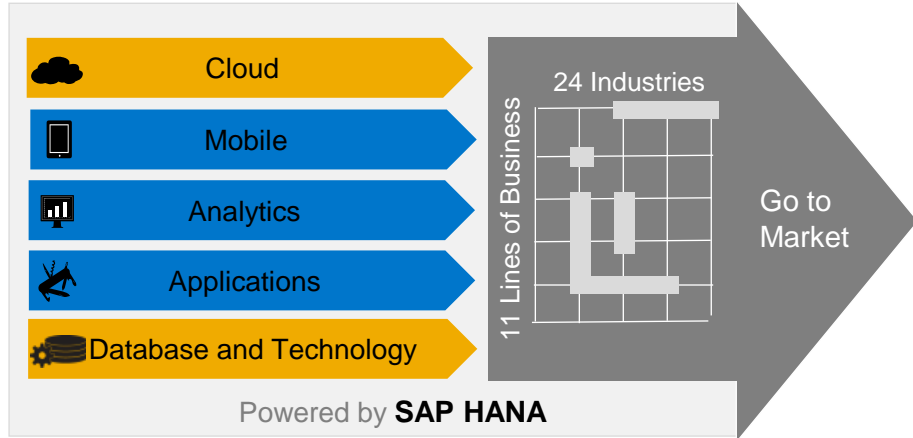
SAP NetWeaver Cloud

Run Like Never Before Before in the Cloud



SAP NetWeaver Cloud

Applications, platform and infrastructure to make businesses *run like never before in the cloud*



- Expanding suite of fully functional, enterprise-class Software-as-a-Service (SaaS) applications
- Robust SAP NetWeaver Cloud Platform-as-a-Service (PaaS) enabling partners and customers to **build and sell their own cloud-based apps**
- World-class Infrastructure-as-a-Service (IaaS) built on proven technology leveraging HANA

SAP NetWeaver Cloud platform

Open, standards-based, modular services accelerate software development in the cloud



Standards-based development and run-time environment



Federated identity management via the SAP Identity Management service



Persistency service leveraging the speed of HANA



Remotely monitored and managed via a web-based Operations Console



Scalable Document Service for managing unstructured data



Mail Service enables messages to be sent directly from SAP NetWeaver Cloud apps

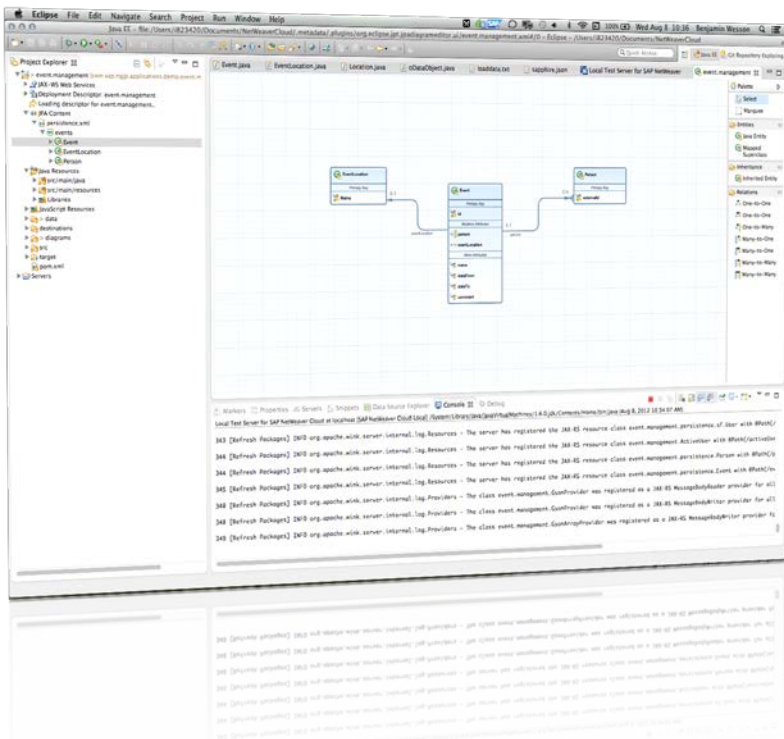


Connectivity service enabling seamless integration with SAP and other systems



Built around the SAP Store

Standards-based development environment

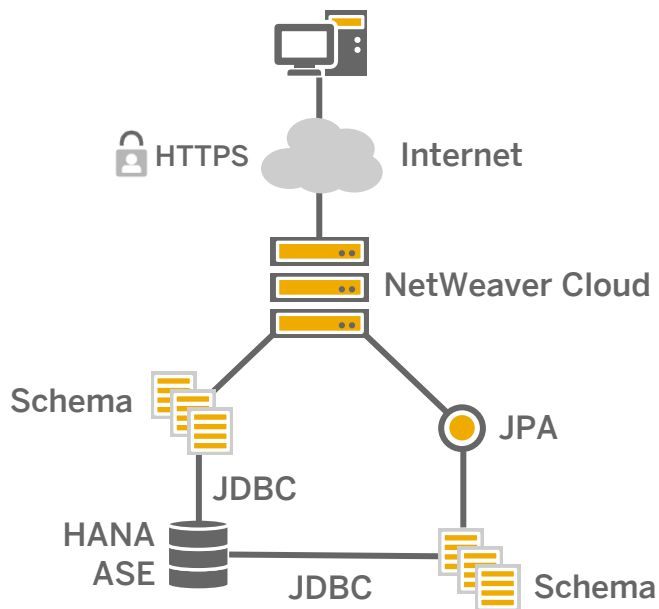


- Packaged as an Eclipse plug-in and maintained via Eclipse Project Update Sites
- Support for Java 6 Web Profile and Java 7*
- Leveraging open source projects from Eclipse and Apache
- Includes embedded Derby engine and local services for rapid application debugging
- Deployed using OSGi bundles and/or WAR application packaging
- No restrictions on 3rd party classes

* Java 7 support planned for a future release.

Persistency service

Database access on-demand leveraging the speed of HANA



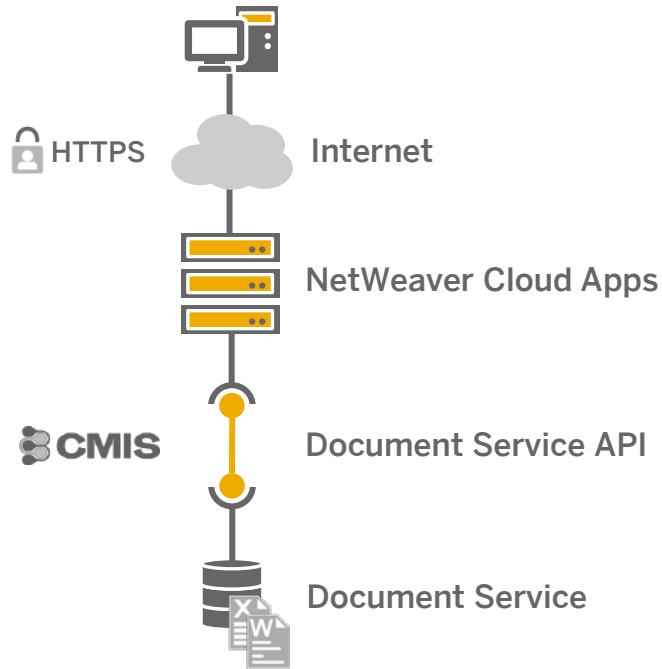
- Structured storage using Sybase ASE and HANA (via JDBC)¹
- Dedicated database user and schema isolated by account space
- Object persistence using JPA 2.0 with EclipseLink and relational persistence using JDBC
- Embedded Apache Derby database for local development²

¹ Current beta uses MaxDB for structured storage with support for ASE and HANA in Beta. ² Alternate database can be configured

Document service ^β



Highly scalable enterprise content management system for unstructured storage

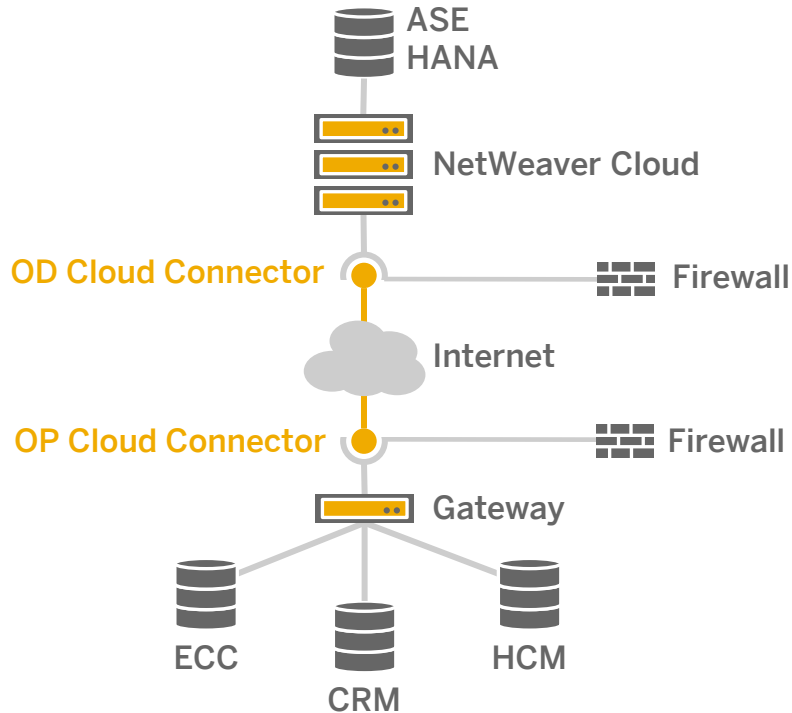


- Document consumption via Apache Chemistry Open Content Management Interoperability Services (CMIS)
- Support for access controls, checkout and versioning facilities
- WSDL/SOAP *and* REST AtomPub protocol support
- Debugging support via Local Document Service

Cloud connectivity service ^β



Secure integration with the SAP Business Suite and other on-premise systems

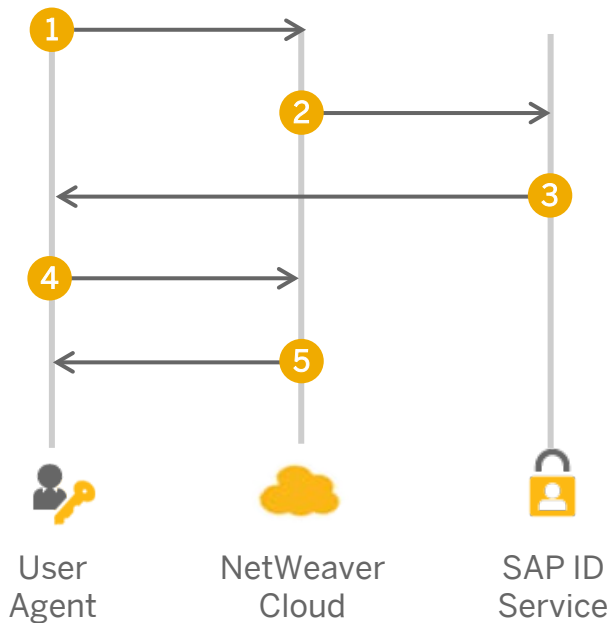


- Establishes secure SSL tunnel between the SAP NetWeaver Cloud and on-premise systems
- Connectivity created by on-premise agent through reverse-invoke process
- Supports pre-configured “Destination API” and certificate inspection to safeguard against forgeries
- Complementary to SAP Gateway, “Avatar” and 3rd party integration suites both on-premise and in the cloud

Identity service ^β



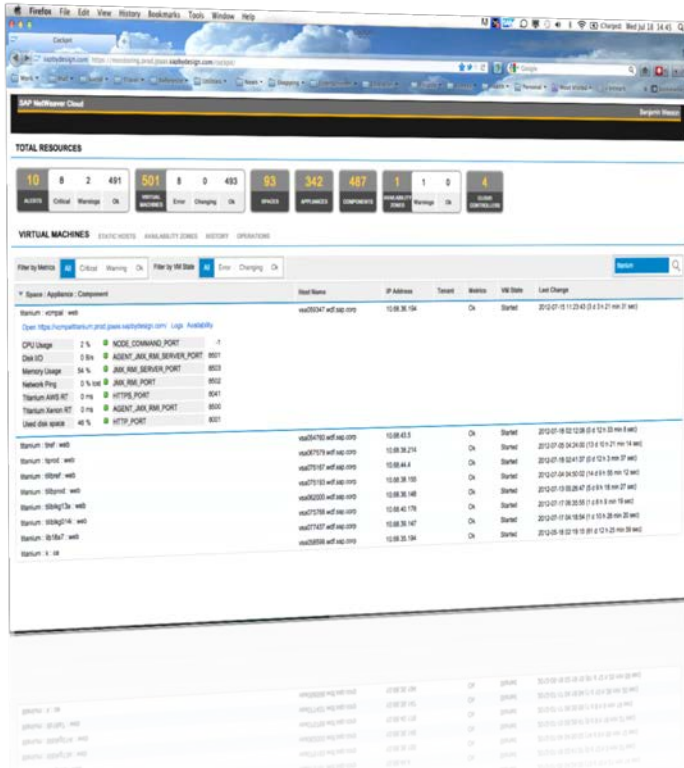
Delegated authentication and authorization across SAP applications



- 1** User requests resource
- 2** Redirect to Identity Provider
- 3** Response artifact returned¹
- 4** Signed assertion POSTed
- 5** Respond with resource

¹Simplified for clarity – some details omitted.

Remote Monitoring and Administration

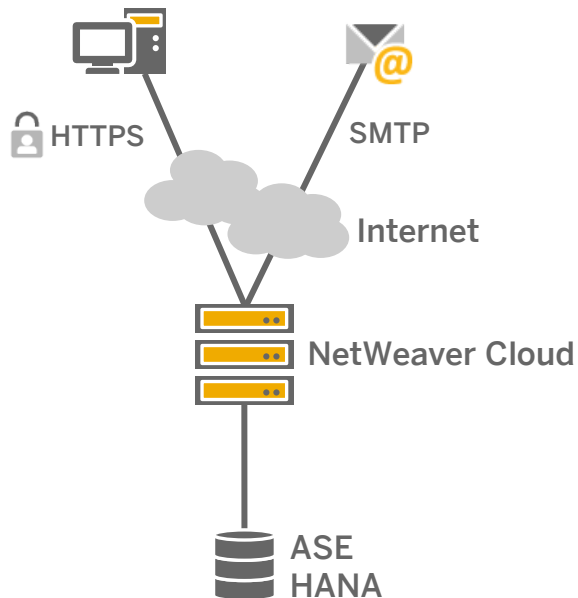


- Proactive 24 x 7 system monitoring with automated alerts
- Detailed usage metrics
- Historical availability reports
- Configurable logging tools
- Delivered via a web-based operations console

Mail Service^β



Send E-Mail Messages Directly from NetWeaver Cloud Applications



- Send e-mail from the SAP NetWeaver Cloud
- Support for WAR-based apps via Java Naming and Directory Interface (JNDI) lookups
- Debugging support via Local File System

SAP NetWeaver Cloud Infrastructure

Secure, Reliable and Performant Infrastructure-as-a-Service



Fast

- Active monitoring of infrastructure components ensures low latency and **guaranteed 99.9% system availability**
- Quarterly delivery of latest innovations to the platform consumers

Secure

- Secure integration to SAP back-ends with no extraneous ports open
- Direct integration with Sales On-Demand and ByDesign-based applications running within the data center

Reliable

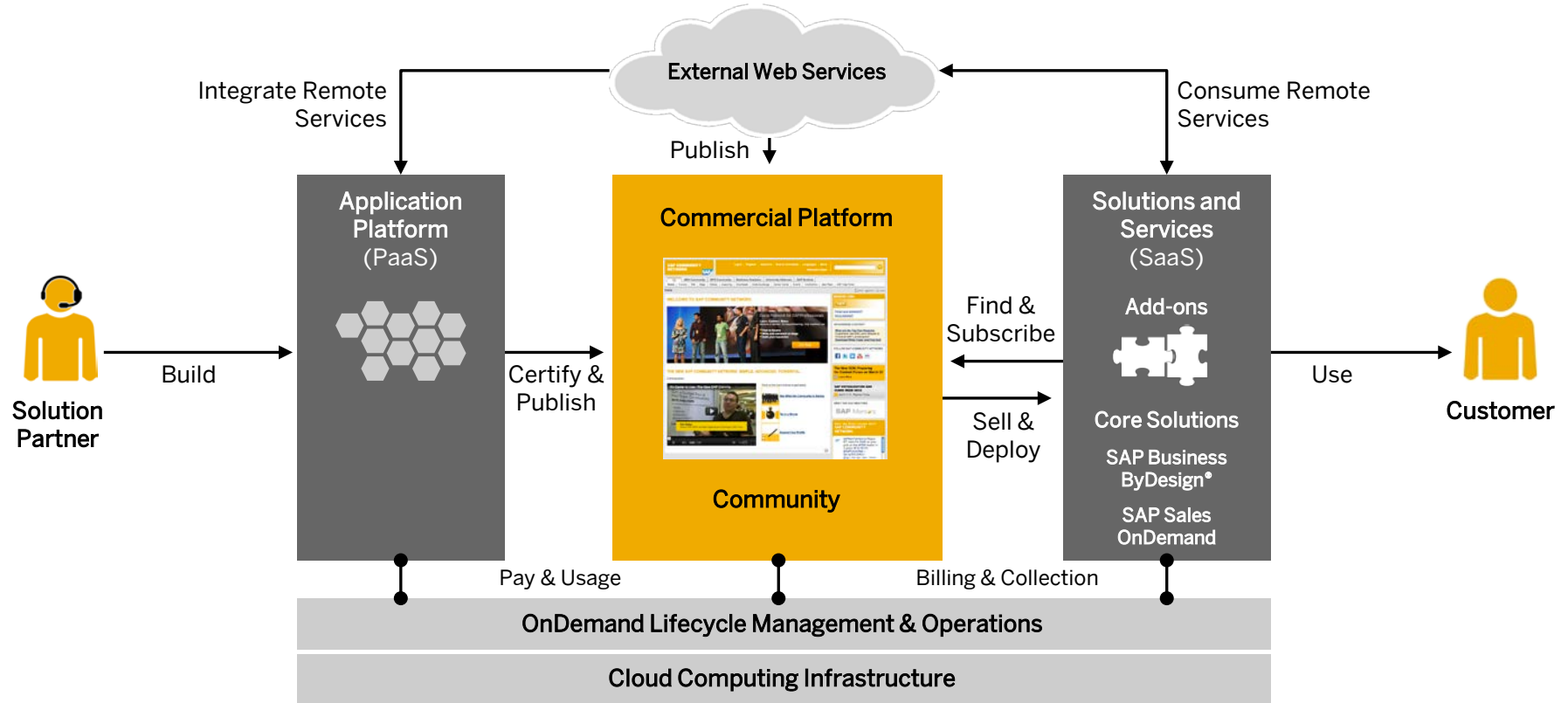
- Platform based on open standards and frameworks
- Deploy standard web applications

Compliant

- ISO 27001, SAS 70 Type II, ISAE 3402 certified to ensure infrastructure stability, security & performance
- Strict security mechanisms including biometrics, video surveillance, and sensors

SAP Store

Connect with Customers and Monetize NetWeaver Cloud Apps



SAP NetWeaver Cloud

Industry Analysts, Media Pundits and the Developer Community Warmly Embrace NetWeaver Cloud



- Gartner calls [NetWeaver Cloud] a “...high-productivity PaaS offering.”¹
- iX, a highly regarded German-language IT publication declares [NetWeaver Cloud] a “...break from tradition...” and exclaims “...in with the new!”
- Richard Hirsch, an outspoken Mentor predicts [NetWeaver Cloud] has the ability to “...shake up the On-Demand space.”²

¹ Pezzini, Massimo and Sholler, Daniel, Gartner Research Note G00219001, 13-Oct-2011

² Surfacing SAP's Cloud DNA: Finding Clues about SAP's Java-based PaaS, Richard Hirsch, 14-Dec-2011

Thank you for your support

© 2012 SAP AG. All rights reserved.

No part of this publication may be reproduced or transmitted in any form or for any purpose without the express permission of SAP AG. The information contained herein may be changed without prior notice.

Some software products marketed by SAP AG and its distributors contain proprietary software components of other software vendors.

Microsoft, Windows, Excel, Outlook, and PowerPoint are registered trademarks of Microsoft Corporation.

IBM, DB2, DB2 Universal Database, System i, System i5, System p, System p5, System x, System z, System z10, System z9, z10, z9, iSeries, pSeries, xSeries, zSeries, eServer, z/VM, z/OS, i5/OS, S/390, OS/390, OS/400, AS/400, S/390 Parallel Enterprise Server, PowerVM, Power Architecture, POWER6+, POWER6, POWER5+, POWER5, POWER, OpenPower, PowerPC, BatchPipes, BladeCenter, System Storage, GPFS, HACMP, RETAIN, DB2 Connect, RACF, Redbooks, OS/2, Parallel Sysplex, MVS/ESA, AIX, Intelligent Miner, WebSphere, Netfinity, Tivoli and Informix are trademarks or registered trademarks of IBM Corporation.

Linux is the registered trademark of Linus Torvalds in the U.S. and other countries.

Adobe, the Adobe logo, Acrobat, PostScript, and Reader are either trademarks or registered trademarks of Adobe Systems Incorporated in the United States and/or other countries.

Oracle and Java are registered trademarks of Oracle and/or its affiliates.

UNIX, X/Open, OSF/1, and Motif are registered trademarks of the Open Group.

Citrix, ICA, Program Neighborhood, MetaFrame, WinFrame, VideoFrame, and MultiWin are trademarks or registered trademarks of Citrix Systems, Inc.

HTML, XML, XHTML and W3C are trademarks or registered trademarks of W3C®, World Wide Web Consortium, Massachusetts Institute of Technology.

SAP, R/3, SAP NetWeaver, Duet, PartnerEdge, ByDesign, SAP BusinessObjects Explorer, StreamWork, and other SAP products and services mentioned herein as well as their respective logos are trademarks or registered trademarks of SAP AG in Germany and other countries.

Business Objects and the Business Objects logo, BusinessObjects, Crystal Reports, Crystal Decisions, Web Intelligence, Xcelsius, and other Business Objects products and services mentioned herein as well as their respective logos are trademarks or registered trademarks of Business Objects Software Ltd. Business Objects is an SAP company.

Sybase and Adaptive Server, iAnywhere, Sybase 365, SQL Anywhere, and other Sybase products and services mentioned herein as well as their respective logos are trademarks or registered trademarks of Sybase, Inc. Sybase is an SAP company.

All other product and service names mentioned are the trademarks of their respective companies. Data contained in this document serves informational purposes only. National product specifications may vary.

The information in this document is proprietary to SAP. No part of this document may be reproduced, copied, or transmitted in any form or for any purpose without the express prior written permission of SAP AG.