

SAP Extended Warehouse Management Release 7.02

Joachim Epp, VP, Product Owner EWM
November 2011



Disclaimer

The information in this presentation is confidential and proprietary to SAP and may not be disclosed without the permission of SAP. This presentation is not subject to your license agreement or any other service or subscription agreement with SAP. SAP has no obligation to pursue any course of business outlined in this document or any related presentation, or to develop or release any functionality mentioned therein. This document, or any related presentation and SAP's strategy and possible future developments, products and/or platforms directions and functionality are all subject to change and may be changed by SAP at any time for any reason without notice. The information on this document is not a commitment, promise or legal obligation to deliver any material, code or functionality. This document is provided without a warranty of any kind, either express or implied, including but not limited to, the implied warranties of merchantability, fitness for a particular purpose, or non-infringement. This document is for informational purposes and may not be incorporated into a contract. SAP assumes no responsibility for errors or omissions in this document, except if such damages were caused by SAP intentionally or grossly negligent.

All forward-looking statements are subject to various risks and uncertainties that could cause actual results to differ materially from expectations. Readers are cautioned not to place undue reliance on these forward-looking statements, which speak only as of their dates, and they should not be relied upon in making purchasing decisions.

What's new in EWM 7.02?

Solution Details SAP EWM

A complete offering resulting from solid, continuous investment



- EWM 5.0
- EWM 5.1
- EWM 7.0
- EWM 7.01
- EWM 7.02

CORE PROCESSES

CROSS PROCESSES

SUPPORTING AREAS

Inbound Processing

- ASN data receiving, validation, correction
- Transportation unit mgmt.
- Goods receipt
- Putaway bin determination
- Internal routing
- Slotting
- Deconsolidation
- Putaway
- Returns / reverse logistics
- Goods receipt optimization
- Advanced returns mgmt.

- Transportation cross docking
- Pick from goods receipt/ push deployment
- Yard management

- RF / RFID Enablement
- Quality inspection
- Import / export integration
- EH&S integration
- eSOA enablement
- Migration Tools

Storage & Operations

- Rearrangement
- Inventory counts / record accuracy
- Replenishment
- Freight order management
- Kit-to stock

- Labour management
- Opportunistic cross docking
- Merchandise distr. X-docking

- Packaging specification
- Batch management
- Serial numbers
- Catch weight
- Material Flow System
- Warehouse cockpit

Outbound Processing

- Order deployment
- Route determination
- Wave management
- Picking bin determination
- Warehouse order creation
- Work assignment
- Picking, packing, staging
- Loading & goods issue
- Kit-to-order
- Manual outbound deliveries
- Production supply

- Task interleaving
- Execution constraint mgmt.
- Semi-system-guided work

- Graphical warehouse layout
- Transp. integration (LES)
- Claims & Returns
- ERP transportation integration
- Multiple EAN
- Cartonization
- Rapid deployment package

Development Topics for EWM 7.0 EhP 2 (RTC Nov 2011)

Cartonization Planning

Handling of Multiple EAN's within EWM

RDS Processes (Rapid Deployment Solutions)

WM-EWM Migration Tools

Integration into Advanced Returns Management

MFS: Case Conveyor System

Business Partner ID Mapping



Cartonization Planning

- Determine the right type (packaging materials) and number of Ship HU's in order to minimize white space
- Create planned Ship HU's early in the execution process
- Monitoring tools to display the created planned ship HU's along the process.

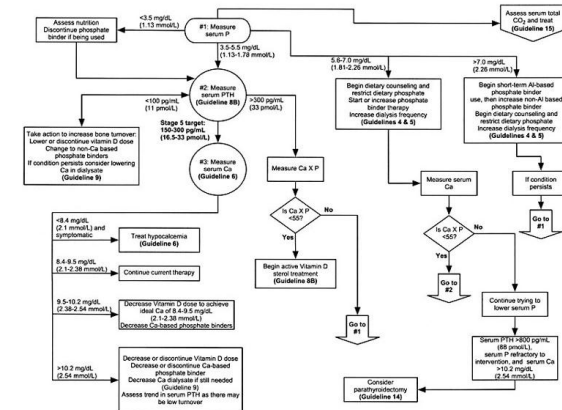


Algorithm and packaging material can be determined based on various criteria like Process Type, Activity Area, Route, Carrier, Ship-to-Party, Transportation Group, Packing Group

One algorithm shipped as a implementation default BAdI implementation:

Minimize the number of HUs by checking volume and optionally the dimensions

Algorithm 11. The Overall Approach to the Management of Bone Metabolism and Disease in CKD Patients (Stages 5 on Dialysis).



Multiple EANs (UPCs)

- ERP already knows multiple GTIN/EAN per Product and UoM
- Make this also available in EWM
- All processes where a GTIN can already be used, support the multiple GTINs



Change Product BRAKE-KIT

Product: BRAKE-KIT
Prod. Descript.: Brake Kit

Units of Meas. | Additional GTINs/EANs | ATP Data

Alt. Unit	GTIN/EAN/UPC	GTIN/EAN Cat.	Main GTIN/EAN
PC	222222222222	UP	<input checked="" type="checkbox"/>
PC	44444444	C1	<input type="checkbox"/>
PC	11111111111111111111	2	<input type="checkbox"/>
<input checked="" type="checkbox"/>	<input checked="" type="checkbox"/>	<input checked="" type="checkbox"/>	<input type="checkbox"/>

Crystal Reports in WM Monitor

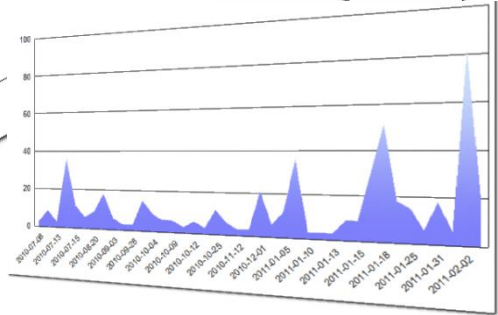
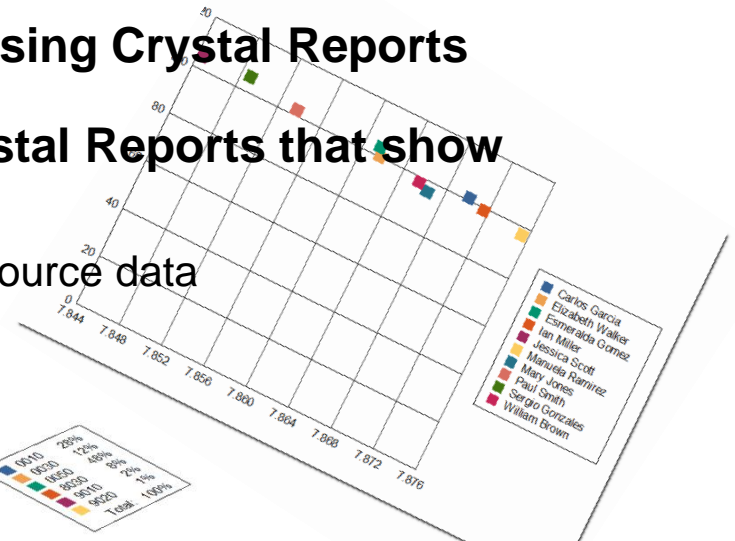
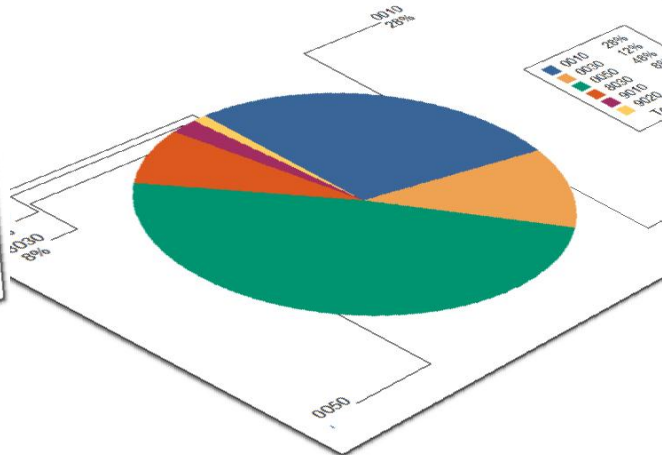
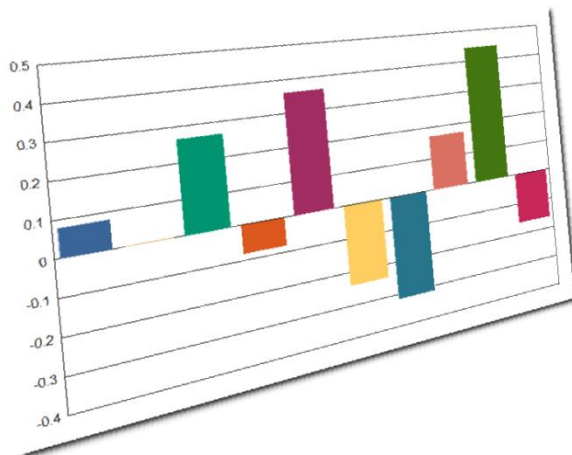
Use existing Netweaver basis functionality with minimal effort

Provide possibility to show complex business data in graphics at a glance

Potentially every monitor node can be shown using Crystal Reports

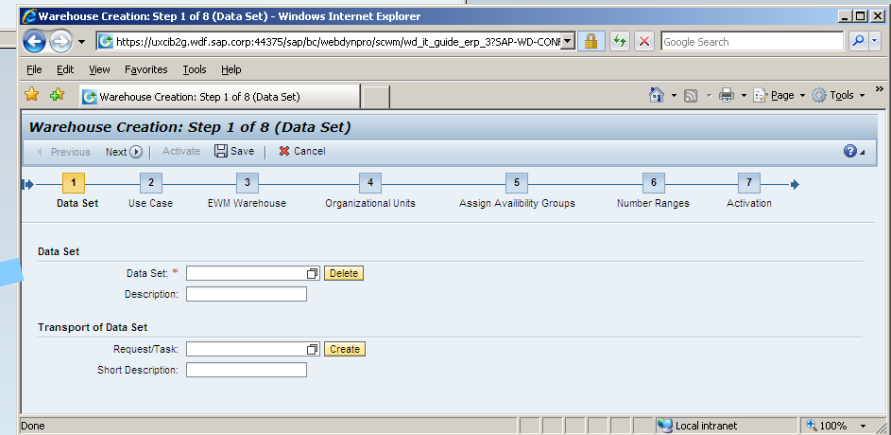
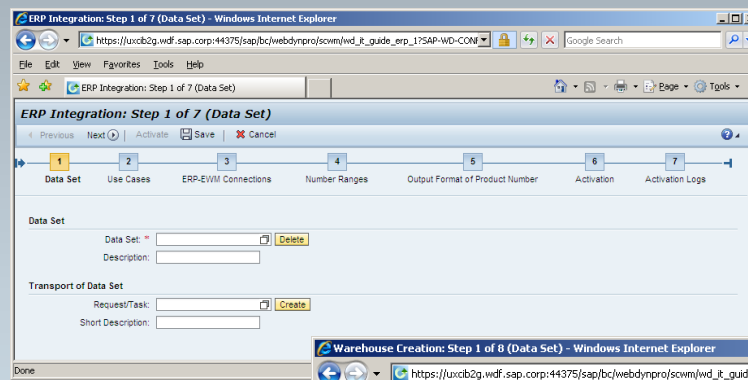
EWM 702 delivery contains seven example Crystal Reports that show

- Different graphic types
- Graphics based on aggregated and non-aggregated source data
- Graphics and lists in Crystal Reports



EWM Implementation - Strategy and Tools

Contents	Page
Configuration Content for Integration of SAP EWM with SAP ERP	3
1. Prerequisites for System Conversion in ERP and EWM	3
2. General Settings in ERP	3
2.1. Products in ERP Client	3
2.2. Configure the Super-Category in ERP	3
2.2.1. Configure the Super-Category in ERP	3
2.2.2. Configure the Super-Category in ERP	3
2.2.3. Configure the Super-Category in ERP	3
2.2.4. Configure the Super-Category in ERP	3
2.2.5. Configure the Super-Category in ERP	3
2.2.6. Configure the Super-Category in ERP	3
2.2.7. Configure the Super-Category in ERP	3
2.2.8. Configure the Super-Category in ERP	3
2.2.9. Configure the Super-Category in ERP	3
2.2.10. Configure the Super-Category in ERP	3
2.2.11. Configure the Super-Category in ERP	3
2.2.12. Configure the Super-Category in ERP	3
2.2.13. Configure the Super-Category in ERP	3
2.2.14. Configure the Super-Category in ERP	3
2.2.15. Configure the Super-Category in ERP	3
2.2.16. Configure the Super-Category in ERP	3
2.2.17. Configure the Super-Category in ERP	3
2.2.18. Configure the Super-Category in ERP	3
2.2.19. Configure the Super-Category in ERP	3
2.2.20. Configure the Super-Category in ERP	3
2.2.21. Configure the Super-Category in ERP	3
2.2.22. Configure the Super-Category in ERP	3
2.2.23. Configure the Super-Category in ERP	3
2.2.24. Configure the Super-Category in ERP	3
2.2.25. Configure the Super-Category in ERP	3
2.2.26. Configure the Super-Category in ERP	3
2.2.27. Configure the Super-Category in ERP	3
2.2.28. Configure the Super-Category in ERP	3
2.2.29. Configure the Super-Category in ERP	3
2.2.30. Configure the Super-Category in ERP	3
2.2.31. Configure the Super-Category in ERP	3
2.2.32. Configure the Super-Category in ERP	3
2.2.33. Configure the Super-Category in ERP	3
2.2.34. Configure the Super-Category in ERP	3
2.2.35. Configure the Super-Category in ERP	3
2.2.36. Configure the Super-Category in ERP	3
2.2.37. Configure the Super-Category in ERP	3
2.2.38. Configure the Super-Category in ERP	3
2.2.39. Configure the Super-Category in ERP	3
2.2.40. Configure the Super-Category in ERP	3
2.2.41. Configure the Super-Category in ERP	3
2.2.42. Configure the Super-Category in ERP	3
2.2.43. Configure the Super-Category in ERP	3
2.2.44. Configure the Super-Category in ERP	3
2.2.45. Configure the Super-Category in ERP	3
2.2.46. Configure the Super-Category in ERP	3
2.2.47. Configure the Super-Category in ERP	3
2.2.48. Configure the Super-Category in ERP	3
2.2.49. Configure the Super-Category in ERP	3
2.2.50. Configure the Super-Category in ERP	3
2.2.51. Configure the Super-Category in ERP	3
2.2.52. Configure the Super-Category in ERP	3
2.2.53. Configure the Super-Category in ERP	3
2.2.54. Configure the Super-Category in ERP	3
2.2.55. Configure the Super-Category in ERP	3
2.2.56. Configure the Super-Category in ERP	3
2.2.57. Configure the Super-Category in ERP	3
2.2.58. Configure the Super-Category in ERP	3
2.2.59. Configure the Super-Category in ERP	3
2.2.60. Configure the Super-Category in ERP	3
2.2.61. Configure the Super-Category in ERP	3
2.2.62. Configure the Super-Category in ERP	3
2.2.63. Configure the Super-Category in ERP	3
2.2.64. Configure the Super-Category in ERP	3
2.2.65. Configure the Super-Category in ERP	3
2.2.66. Configure the Super-Category in ERP	3
2.2.67. Configure the Super-Category in ERP	3
2.2.68. Configure the Super-Category in ERP	3
2.2.69. Configure the Super-Category in ERP	3
2.2.70. Configure the Super-Category in ERP	3
2.2.71. Configure the Super-Category in ERP	3
2.2.72. Configure the Super-Category in ERP	3
2.2.73. Configure the Super-Category in ERP	3
2.2.74. Configure the Super-Category in ERP	3
2.2.75. Configure the Super-Category in ERP	3
2.2.76. Configure the Super-Category in ERP	3
2.2.77. Configure the Super-Category in ERP	3
2.2.78. Configure the Super-Category in ERP	3
2.2.79. Configure the Super-Category in ERP	3
2.2.80. Configure the Super-Category in ERP	3
2.2.81. Configure the Super-Category in ERP	3
2.2.82. Configure the Super-Category in ERP	3
2.2.83. Configure the Super-Category in ERP	3
2.2.84. Configure the Super-Category in ERP	3
2.2.85. Configure the Super-Category in ERP	3
2.2.86. Configure the Super-Category in ERP	3
2.2.87. Configure the Super-Category in ERP	3
2.2.88. Configure the Super-Category in ERP	3
2.2.89. Configure the Super-Category in ERP	3
2.2.90. Configure the Super-Category in ERP	3
2.2.91. Configure the Super-Category in ERP	3
2.2.92. Configure the Super-Category in ERP	3
2.2.93. Configure the Super-Category in ERP	3
2.2.94. Configure the Super-Category in ERP	3
2.2.95. Configure the Super-Category in ERP	3
2.2.96. Configure the Super-Category in ERP	3
2.2.97. Configure the Super-Category in ERP	3
2.2.98. Configure the Super-Category in ERP	3
2.2.99. Configure the Super-Category in ERP	3
2.2.100. Configure the Super-Category in ERP	3



SAP EWM Rapid Deployment Solution

Detailed Scope

Pre-Configured Critical Warehousing Business Scenarios

- Inbound
 - Inbound Process with no Packing Information from Vendor (Automatic WT, Manual GR)
 - Inbound Process with no Packing Information from Vendor - Pack for Put away
- Outbound
 - Outbound Process Using Pick-HUs as Shipping HUs
 - Outbound Process Using Wave, Pick-HU, Packing, Staging, and Loading
- Inventory Counting
 - Periodic Physical Inventory
 - Cycle Counting
- Replenishment
 - Automatic Replenishment
 - Planned Replenishment
- Customer Returns
 - Customer Returns with Quality Inspection
 - Customer Returns with Scrapping
- Scrapping
 - Scrapping due to Best Before Date/Shelf-Life Expiration Date



Solution Positioning

SAP ERP WM & SAP SCM Extended Warehouse Mgmt.



SAP TM Customer
Network Meeting

SAP ERP Warehouse Management

*(Continuous
improvement /
maintenance)*

Migration
Tools

SAP SCM Extended Warehouse Management

*(Strategic investment solution /
strong roadmap)*

- Basic warehouse processes
- Simple warehouse operations
- Small & medium-sized warehouses

- Comprehensive warehouse mgmt. processes
- High performance, high volume warehouse operations
- Medium & large-sized warehouses

WM-EWM Migration Tools

Products

Product Master Data (Warehouse)

Fixed Bin Assignment

Packaging Specification Palletization

Packaging Spec. for Alternative UoM

Stock

Simple Stock

Stock with Serial Numbers

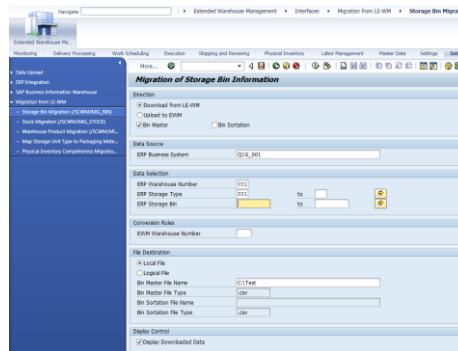
Stock with Handling Unit

Stock with Storage Unit

Special Stocks

Bins

Storage Bin Migration (Bin Master
And/Or Bin Sortation)



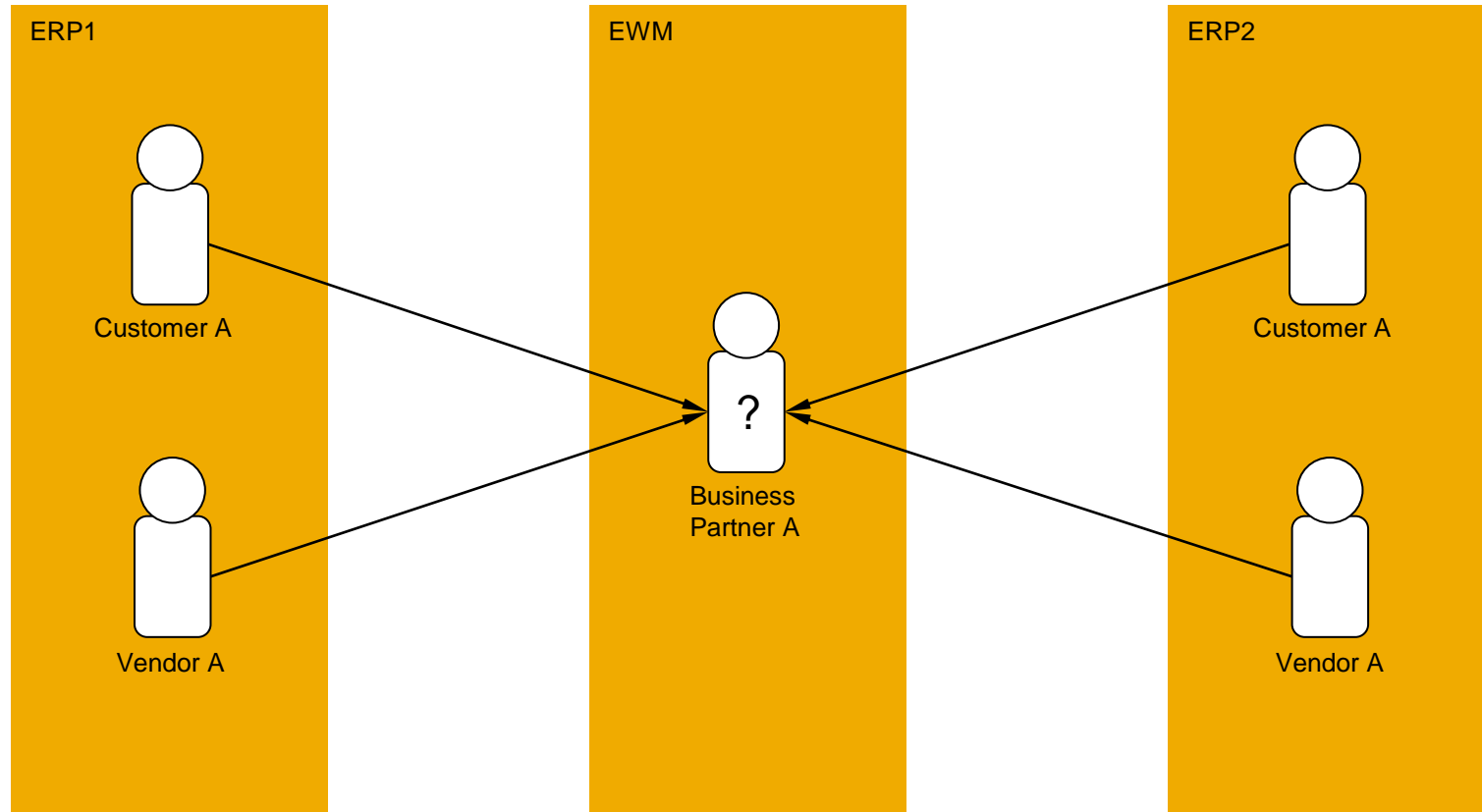
Physical Inventory

Completeness Migration

Advanced Returns Management Integration

- **ARM Inspection (“Counter Return”)**
- **EWM Inspection with LFU execution in EWM (based on Customer Returns Order)**
- **EWM Inspection with LFU execution in EWM (based on Returns Stock Transport Order)**
- **EWM Inspection with ERP LFU Execution and Explicit Valuation Posting via Credit Memo Request**
- **Material Replacement after ‘Return to Vendor’ Process**
- **Internal / external Repair Orders**

Business Partner ID Mapping



Conversion in CIF: Uniqueness on DB -> Conversion on UI

EWM Material Flow System for Case Conveyors

The existing MFS functionality focused on rather slow-moving pallet conveyor technique.

Case conveyor systems have more challenging requirements:

- Faster response time needed
- Higher throughput – more events per second to be processed
- Cases usually do not stop at scanners to wait for the response of EWM MFS





Thank You!

Contact information:

Joachim Epp
Product Owner SAP EWM
Dietmar-Hopp-Allee 16
69190 Walldorf

+49 6227 7-41305
joachim.epp@sap.com