

BusinessObjects XI Release 1 and 2

Searching for LDAP Attributes in Windows AD

Overview

In Windows AD 2003, the easiest way to find LDAP attributes such as distinguished name (DN), base distinguished name (Base DN), user principal name (UPN), sAMAccountName (SAM) and common name (CN) is to use the Microsoft ADSIedit tool.

Contents

INTRODUCTION	2
GETTING STARTED	2
CONNECTING TO A DOMAIN	3
<i>Domains</i>	3
<i>Connecting</i>	3
<i>Browse object attributes</i>	4
COMMON ATTRIBUTES	6
<i>sAMAccountName</i>	6
<i>userPrincipalName</i>	6
<i>CN</i>	6
MORE INFORMATION	7

Introduction

Active Directory provides directory services in the Windows Server 2003 operating systems. There are many tools that allow Active Directory to be viewed and edited and these tools use either LDAP or ADSI application programming interfaces (APIs) to access Active Directory.

When configuring LDAP to AD, the configuration requires access to lesser known AD attributes. ADSIedit is the best tool for looking up these attributes in AD.

Getting Started

ADSIedit is located on the Microsoft Windows 2003 CD. From the root directory, go to SUPPORT\TOOLS, and run SUPTOOLS.MSI on a domain controller.

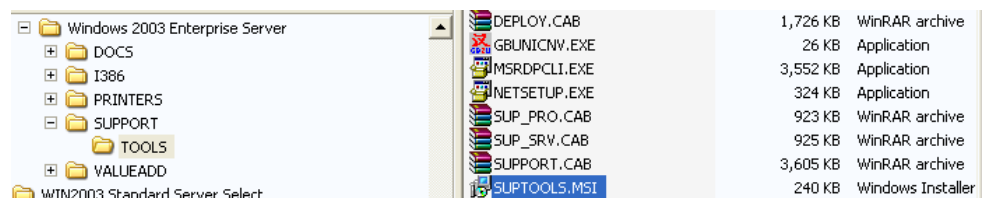


Figure 1

You can download ADSIedit as part of the Windows XP Service Pack 2 Support Tools from [here](#).

After installing ADSIedit, you must either add a path variable and shortcut or run ADSIedit from its actual location (Figure 2). The installation doesn't create a program icon for it by default.

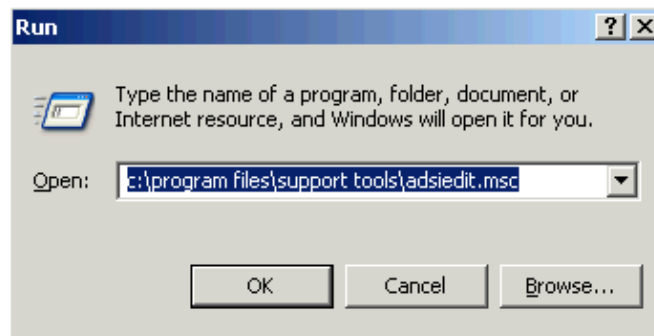


Figure 2

This will launch the program.

Connecting to a Domain

Domains

The root domain can be used as the Base DN in LDAP configurations (Figure 3). Using the root domain will allow access to all objects in the root domain only.

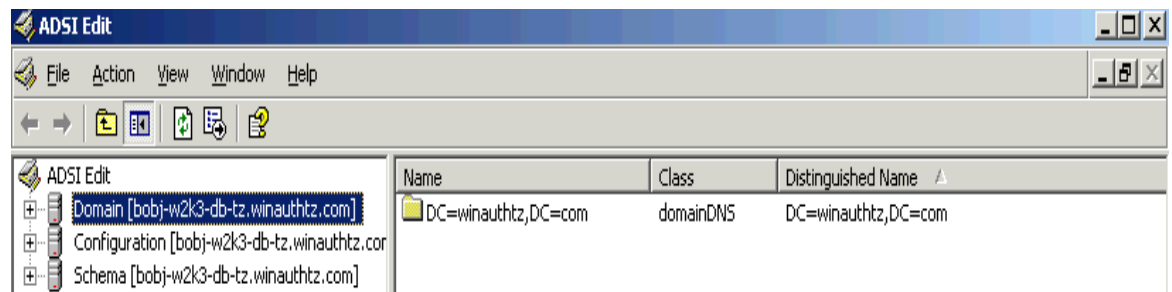


Figure 3

To access principals in a child domain, connect to that child by highlighting the root ADSI Edit and from the **Action** menu click **Connect to**.

Connecting

In the Connection Settings dialog box (Figure 4), type the name of your connection and the DN of the child.

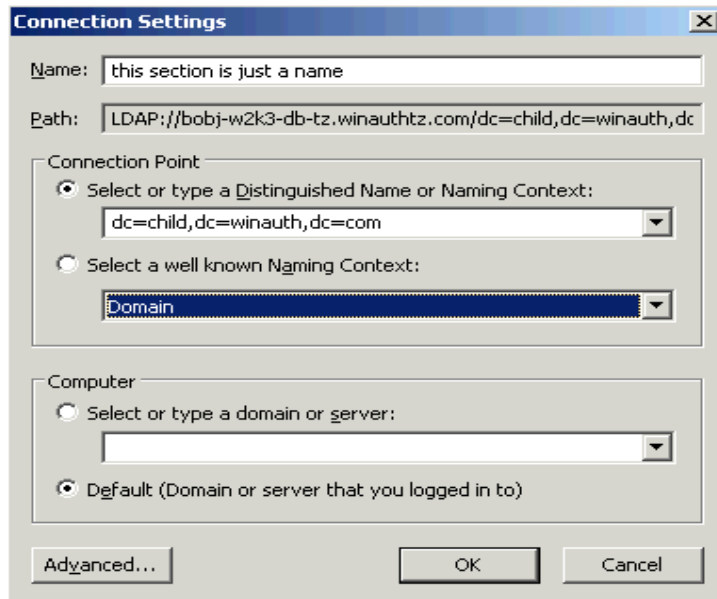


Figure 4

Browse object attributes

Once you are connected to the proper domain you must browse through the directory to find the object(s) that you wish to look up attributes for.

In the example below (Figure 5) the **SP2 SVC** account was located under the **Users** group. Right-click this account then click **Properties** to bring up the list of AD attributes.

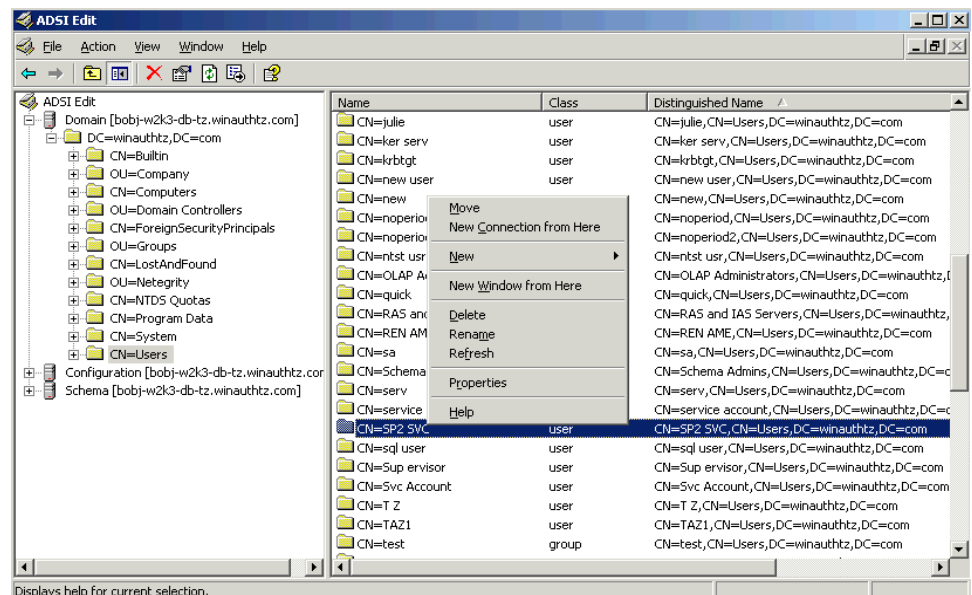


Figure 5

The properties dialog box (Figure 6) has the SP2 SVC user's distinguished name highlighted.

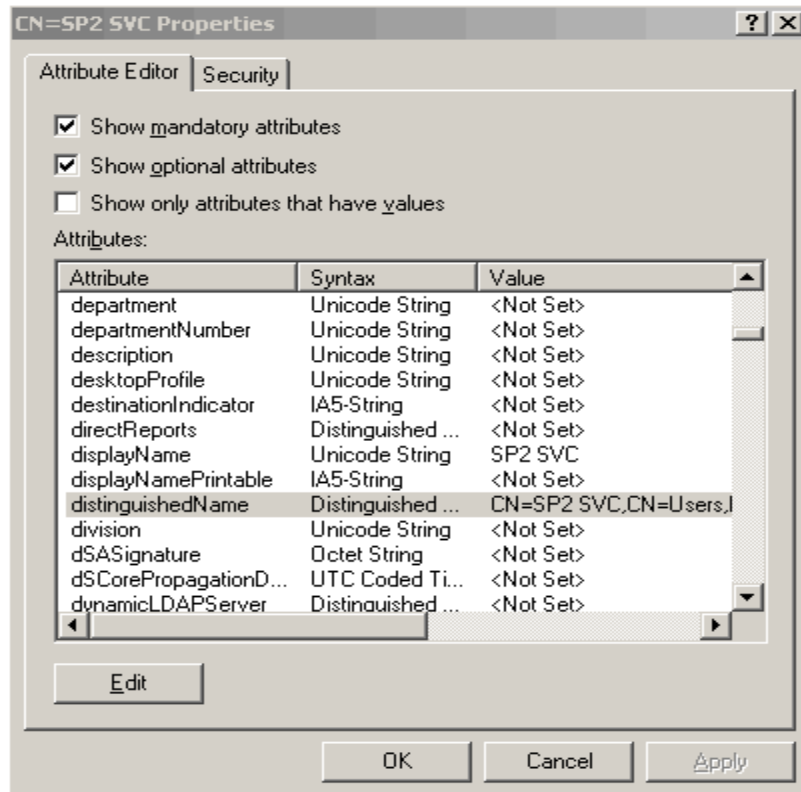


Figure 6

Double-click the attribute to copy it without any typing errors. A dialog box similar to Figure 7 will appear.

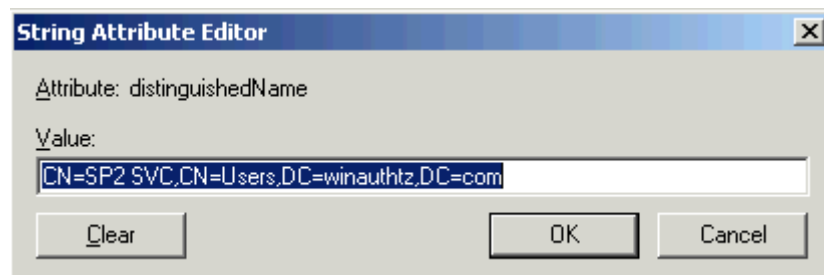


Figure 7

Common Attributes

sAMAccountName

The sAMAccountName is the normal way that users login to Windows and it is the most commonly used attribute. When configuring LDAP, if there is only one domain, this should be the attribute used to map users.

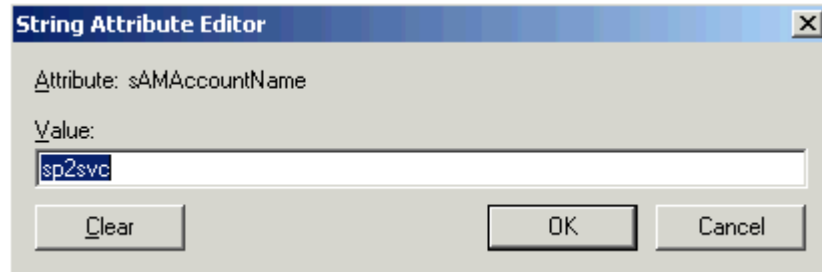


Figure 8

userPrincipalName

The userPrincipalName (UPN) is useful in multi-domain deployments.

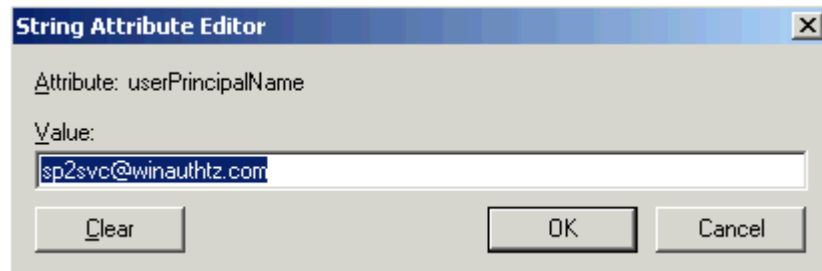


Figure 9

CN

Common Name (CN) is not very useful in most cases as most users do not know their CN. When configuring LDAP to AD this is the default attribute and should be changed to one of the above.

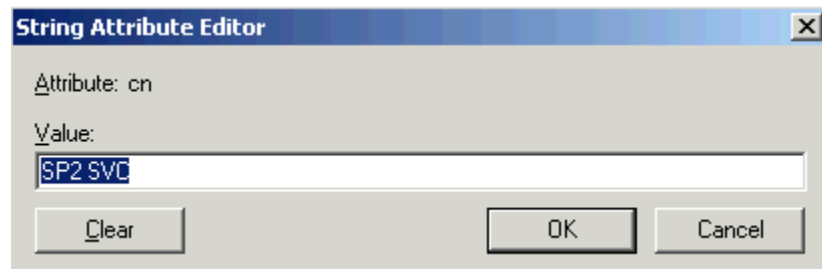


Figure 10

More Information

For information on how to configure LDAP authentication for BusinessObjects XI, see the following [technical brief](#).

► www.businessobjects.com

No part of the computer software or this document may be reproduced or transmitted in any form or by any means, electronic or mechanical, including photocopying, recording, or by any information storage and retrieval system, without permission in writing from Business Objects.

The information in this document is subject to change without notice. Business Objects does not warrant that this document is error free.

This software and documentation is commercial computer software under Federal Acquisition regulations, and is provided only under the Restricted Rights of the Federal Acquisition Regulations applicable to commercial computer software provided at private expense. The use, duplication, or disclosure by the U.S. Government is subject to restrictions set forth in subdivision (c) (1) (ii) of the Rights in Technical Data and Computer Software clause at 252.227-7013.

The Business Objects product and technology are protected by US patent numbers 5,555,403; 6,247,008; 6,578,027; 6,490,593; and 6,289,352. The Business Objects logo, the Business Objects tagline, BusinessObjects, BusinessObjects Broadcast Agent, BusinessQuery, Crystal Analysis, Crystal Analysis Holos, Crystal Applications, Crystal Enterprise, Crystal Info, Crystal Reports, Rapid Mart, and WebIntelligence are trademarks or registered trademarks of Business Objects SA in the United States and/or other countries. Various product and service names referenced herein may be trademarks of Business Objects SA. All other company, product, or brand names mentioned herein, may be the trademarks of their respective owners. Specifications subject to change without notice. Not responsible for errors or omissions.

Copyright © 2007 Business Objects SA. All rights reserved.