

# Step by Step Procedure to Create Broadcasters, to Schedule and to Enhance of SAP- BI Queries from Query Designer



## Applies to:

SAP Business Intelligence 7.0. For more information, visit the [EDW homepage](#).

## Summary

This article describes about Step by step procedure to Broadcasting SAP-BI quires from Query designer, to Scheduling, to Enhancements.

**Author:** Sreenivas Nannuri

**Company:** Accenture Private Ltd

**Created on:** 21 April 2011

## Author Bio



Sreenivas Nannuri is working with Accenture Private Ltd. since 1.5 years. He is currently working on SAP BI 7.0 and has experience of BI 7.2 as well. He also worked on different areas in BI like modeling, reporting, production support, ETL process.

## Table of Contents

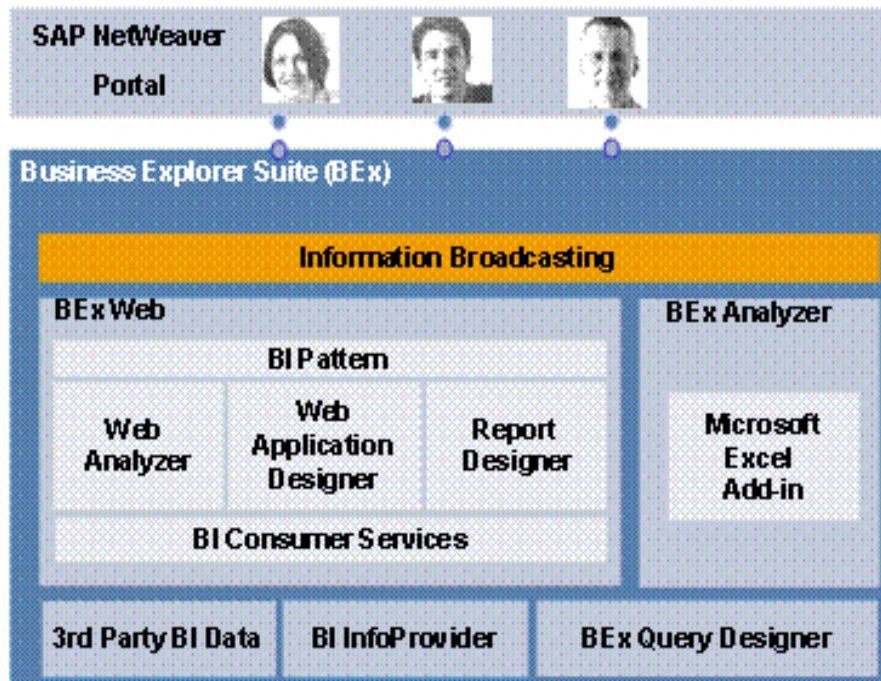
Introduction .....	3
1.    BEx Information Broadcasting : .....	3
2.    Information Broadcasting allows the distribution of BI information.....	3
3.    Information Broadcasting supports different business scenarios .....	4
Prerequisites.....	4
Step by step procedure to create Broadcasters BI Queries to Email from Query Designer .....	4
Broadcasting BI Queries to Email from Query Designer .....	4
Scheduling the Broadcaster.....	12
How to Edit the Existing Broadcaster .....	14
Related Content.....	15
Disclaimer and Liability Notice.....	16

## Introduction

### 1. BEx Information Broadcasting :

BEx Information Broadcasting allows you to make objects with BI content available to a wide spectrum of users, according to your requirements.

Using the BEx Broadcaster, you can pre-calculate Web templates, queries, query views, reports, and workbooks and publish them to the portal, distribute them by e-mail, or print them. You can also generate online links to queries and Web applications.



This document describes the step by step procedure to create Broadcasters, scheduling the Broadcasters and how to edit existing Broadcasters.

### 2. Information Broadcasting allows the distribution of BI information

- a. via different channels ...
  - i. E-Mail
  - ii. Enterprise Portal
- b. in different formats ...
  - i. HTML, MHTML
  - ii. BEx Analyzer Workbooks
  - iii. ZIP Files
- c. of different sources ...
  - i. BI Web Applications - Dashboards, cockpits
  - ii. BEx Analyzer Workbooks
  - iii. Queries
- d. in different modes...
  - i. Online & pre-calculated

### 3. Information Broadcasting supports different business scenarios

- a. **Event based** (“Intelligent push”)
  - i. Integration into process chains (E.g If new data is loaded into the data container (InfoCube)).
- b. **Ad hoc**
  - i. BEx Broadcasting Wizard for one-step distribution.
- c. **Scheduled**
  - i. Guided scheduling times (for end users / information consumers).
  - ii. Ensures system performance because of better load balancing.
  - iii. Scheduling at any time (for power users / administrators).
  - iv. Create scheduling slots for specific user groups.
  - v. No time restriction and no target restriction.
  - vi. Create pre-calculations based on the data authorizations of the target user.

### Prerequisites

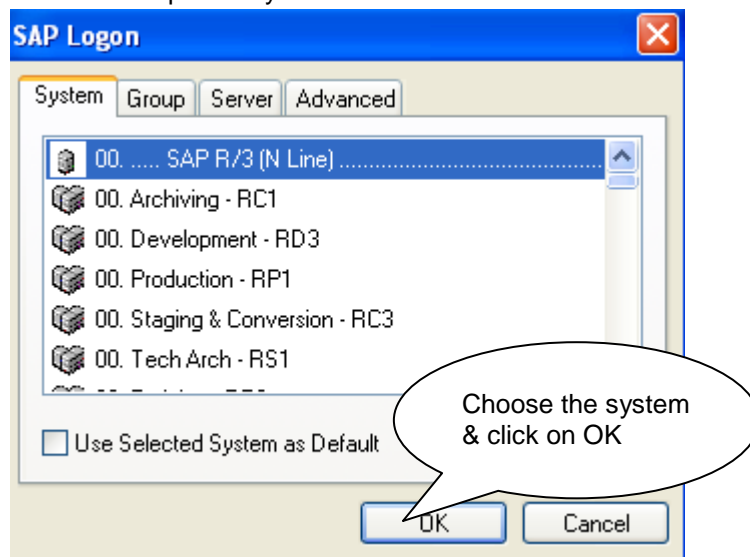
- I. BI portal is installed; BI and EP are integrated successfully.
- II. Email setup with SMTP is configured properly and routing test is successful.
- III. BI Query designer is installed on your PC.

### Step by step procedure to create Broadcasters BI Queries to Email from Query Designer

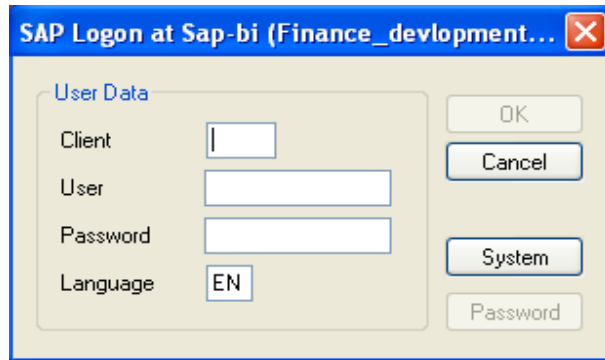
- I. In general there are two different types to create Broadcasters, scheduling & to edit.
- II. Broadcasting BI queries from Query Designer
- III. Broadcasting BI queries from Enterprise portal
- IV. In this document described about type 1 (Broadcasting BI queries from Query Designer)

### Broadcasting BI Queries to Email from Query Designer

- 1) Go to the All Programs → Choose Business Explorer → Query designer.
- 2) Choose the Specific system to build or edit the Broadcasters.

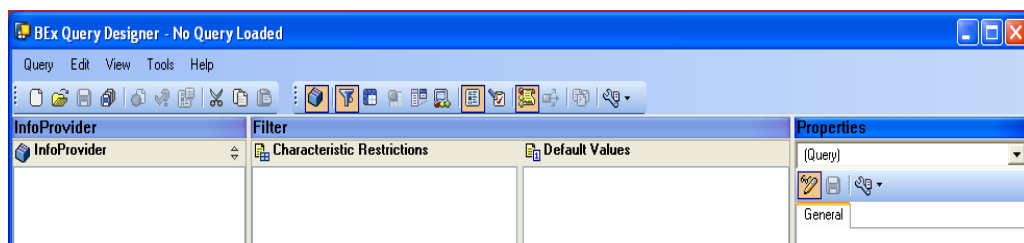


- 3) Login with your credentials.

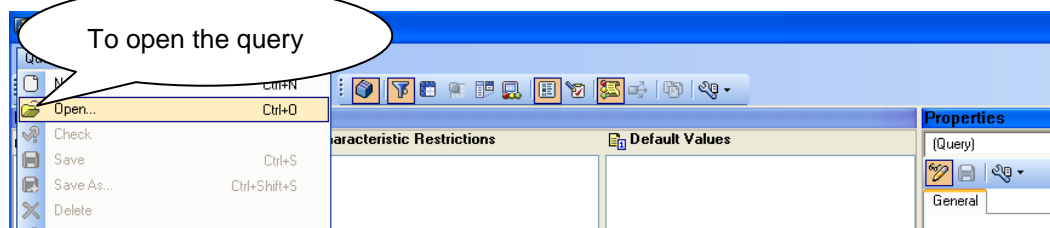


After providing the Login details OK pushbutton will enable, then click on **OK** Pushbutton

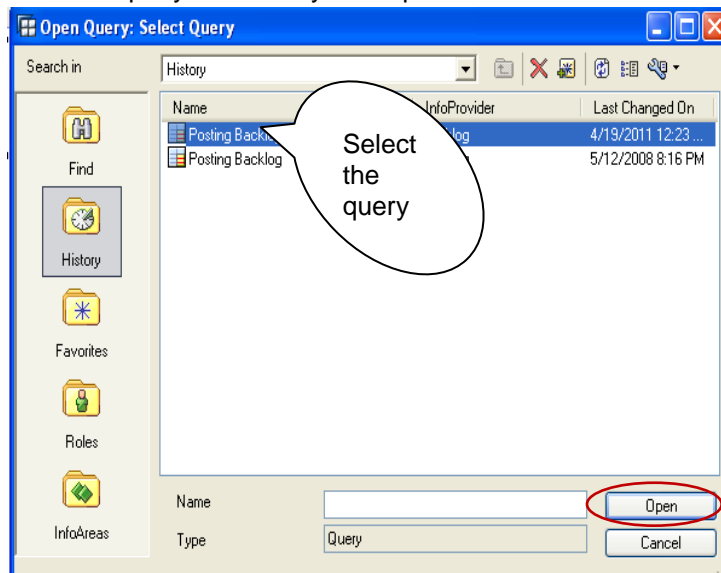
- 4) Now you will get the following screen.



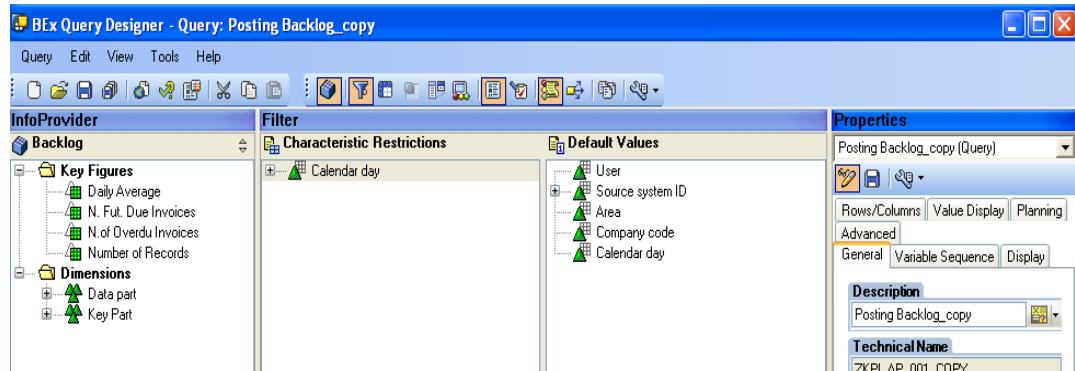
- 5) Go to the menu and select the Query →Open



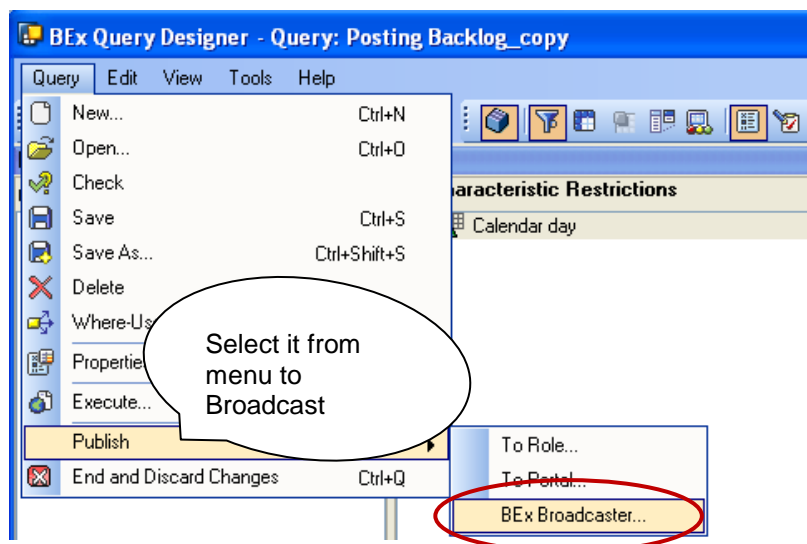
- 6) Select the query based on your requirement and click on **OPEN** button.



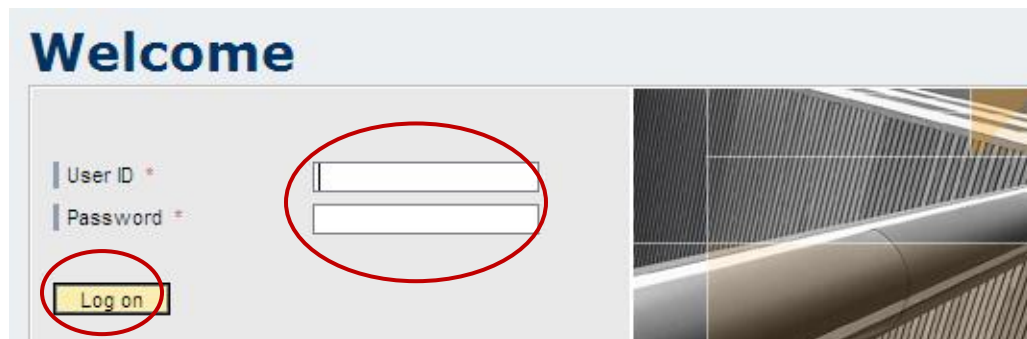
7) You will get the following screen to execute, to publish in portal, to assign role.



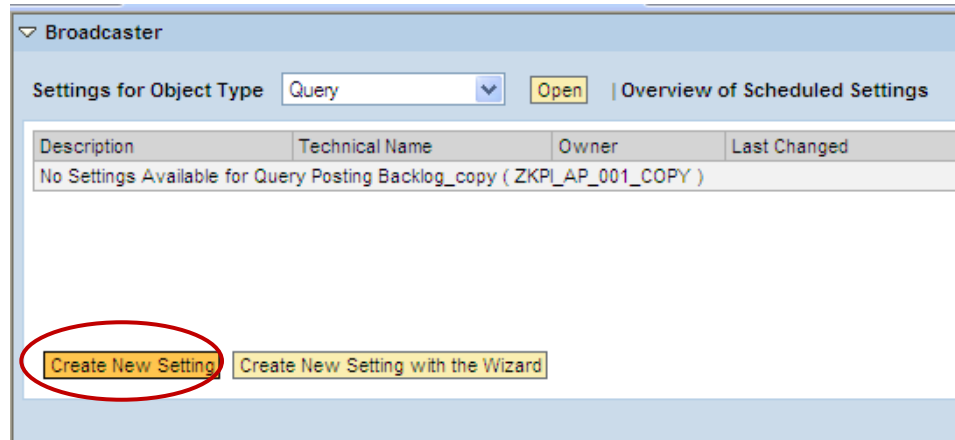
8) Go to the menu select Query→Publish→BexBroadcaster.



9) After selecting the BEx Broadcaster you will navigate to the below screen, Give your login credentials and click on **Logon** Pushbutton.



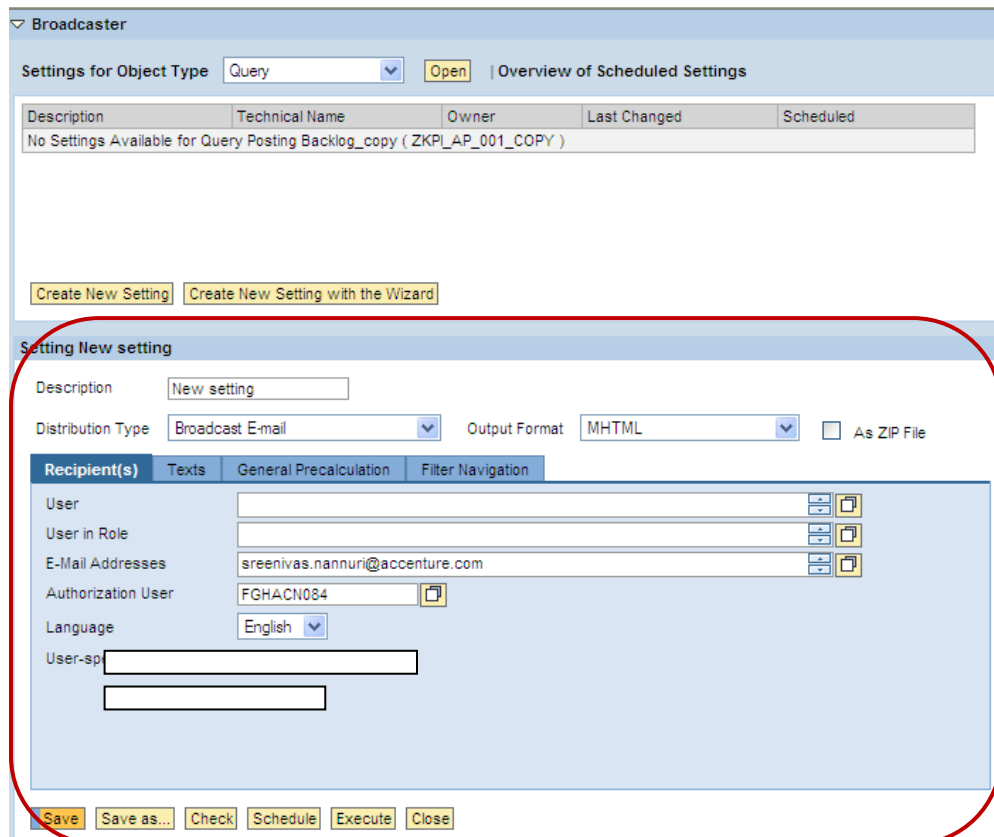
10) After that you will get the following screen and then click on **Create New Setting**.



11) After clicking on Create New setting push button, we get the below screen to maintain

- a) The list of SAP BW Users
- b) Users within a certain Role
- c) Enter/select e-mail addresses
- d) D) Broadcast with authorizations of another user (if you have according authorizations)
- e) Can determine a Lang
- f) Can broadcast user-specific
- g) G) Text & Mail body
- h) Choosing Variants (if required)
- i) filters (if required)

12)



13) Give the **Description** in description input parameter.

Setting New setting

Description

Distribution Type  Output Format   As ZIP File

14) Choose the **Distribution Type** input parameter and drill down, select which type needed based on the requirement. (Ex: Broadcast E-mail)

Setting New setting

Description

Distribution Type  Output Format   As ZIP File

Recipient(s)

User

User in Role

E-Mail Addresses

Authorization Use

Select distribution type

15) Choose the **Output Format** input parameter and drill down, select which type needed based on the requirement. (Ex: XML\_MS EXCEL)

Setting New setting

Description

Distribution Type  Output Format   As ZIP File

Recipient(s)

User

User in Role

Select Output Format

16) Check the check box (As Zip File) if you need to zip the file and send an e-mail.

Setting New setting

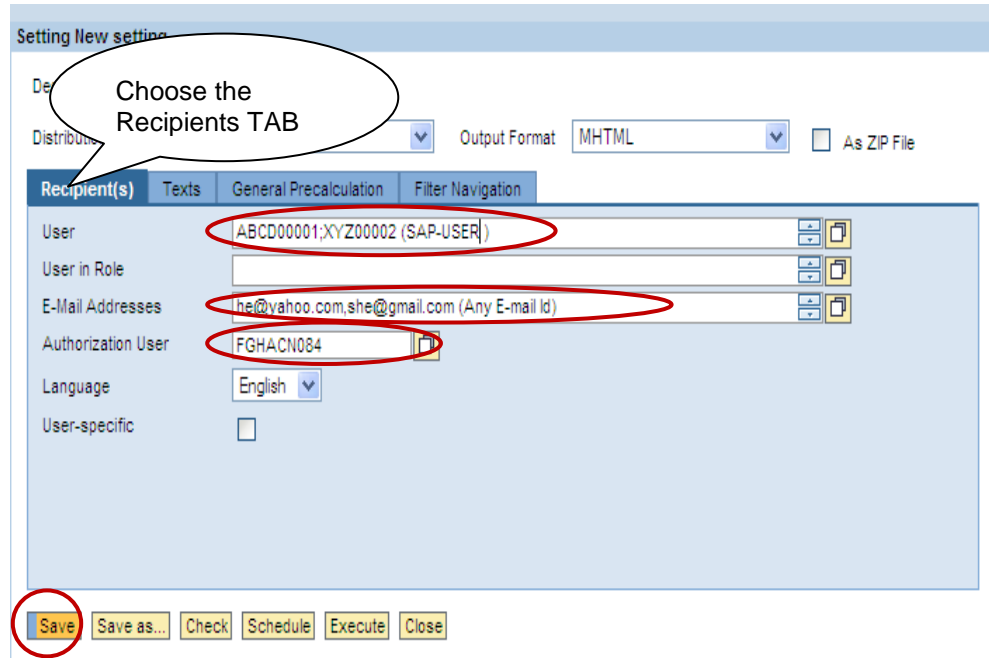
Description

Distribution Type  Output Format   As ZIP File

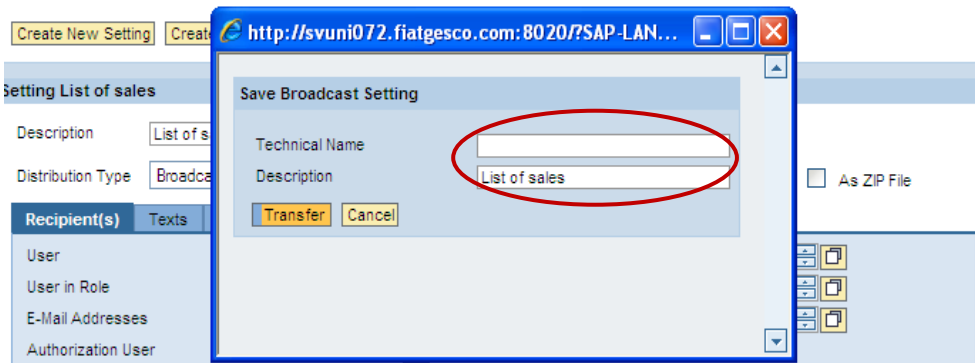
Check it if required



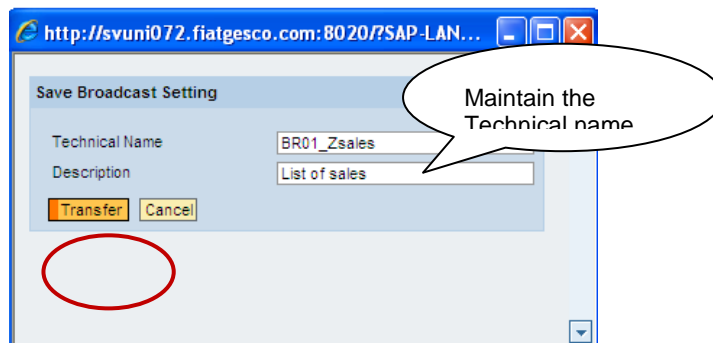
- Click on **Recipients Tab** and give the required User (SAP-Users), **E-mail Addresses** (Any) & also give ownership to particular Users by maintaining **Authorization User** input parameter as below screen and click on **SAVE**.



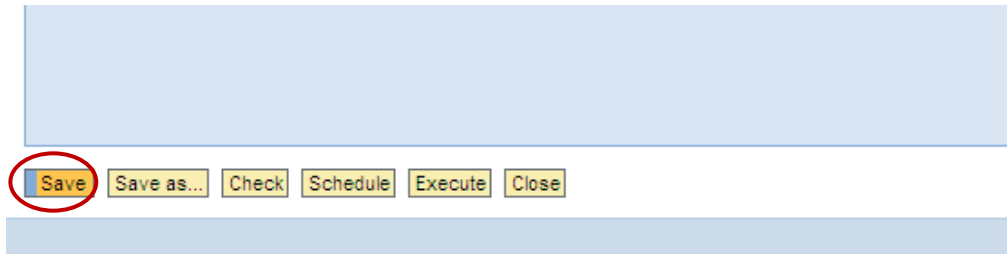
- After clicking on **SAVE** button will get the following pop up to maintain the Technical name and Description of a broadcaster.



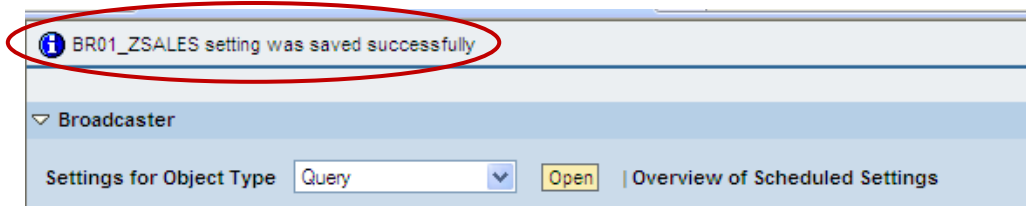
After maintaining the technical name and description click on **TRANSFER** push button



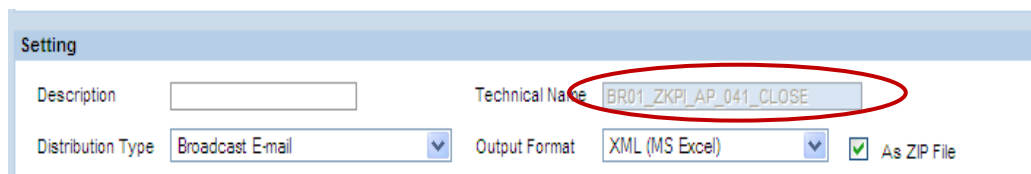
19) After that click on **SAVE** button.



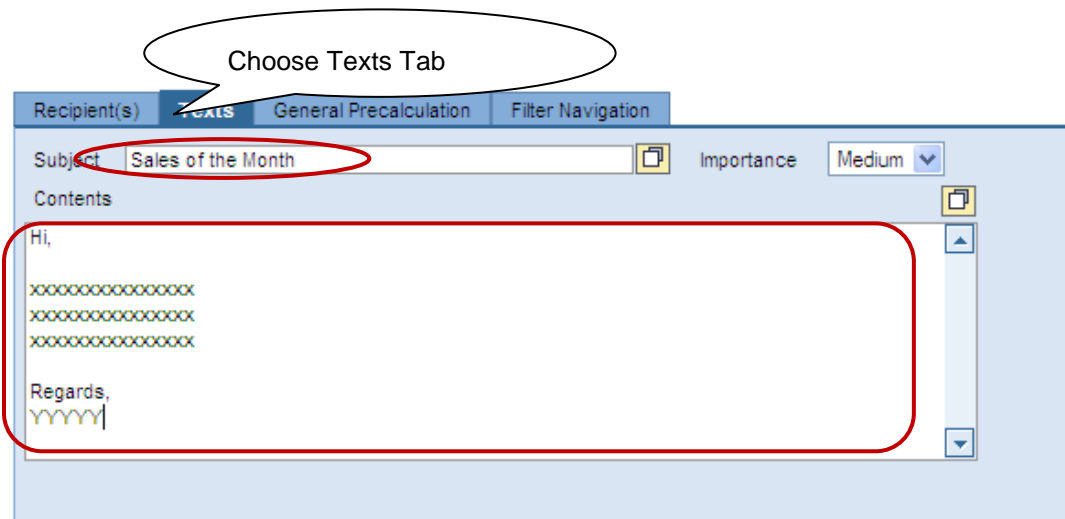
a) Then you will get the following message (Saved Successfully)



b) Now you can look the **Technical Name** in disable mode.



20) Choose the **TEXTS** Tab and maintain the Mail subject and body of the broadcaster



- 21) Choose the **General Precalculation** Tab and maintain the Variant (to fill Query input parameters automatically, its maintained at SM30 transaction and TVARV Table).

Choose the Precalculation Tab

Maintain the Variant if required

- 22) Choose the **Filter Navigation** Tab and maintain the Filters (if required) and click on **SAVE**.

Maintain the Filters if required

Save Save as... Check Schedule Execute Close

## Scheduling the Broadcaster

- 1) Click on **Schedule Push button**, and then you will get the following popup to maintain scheduling options.

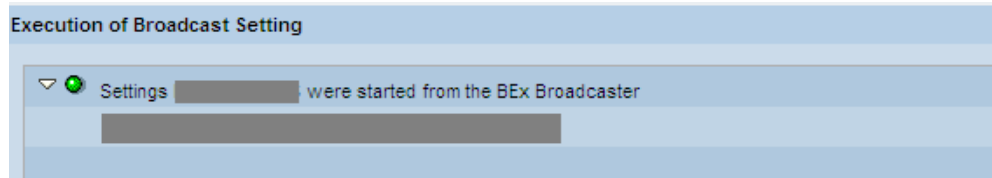
- 2) After clicking on Schedule button you will get below screen to maintain options for scheduling as per the requirement and click on **Transfer** push button.

- 3) After maintaining the Scheduling options click on **SAVE**.

4) If you need to execute immediately click on **Execute** button.

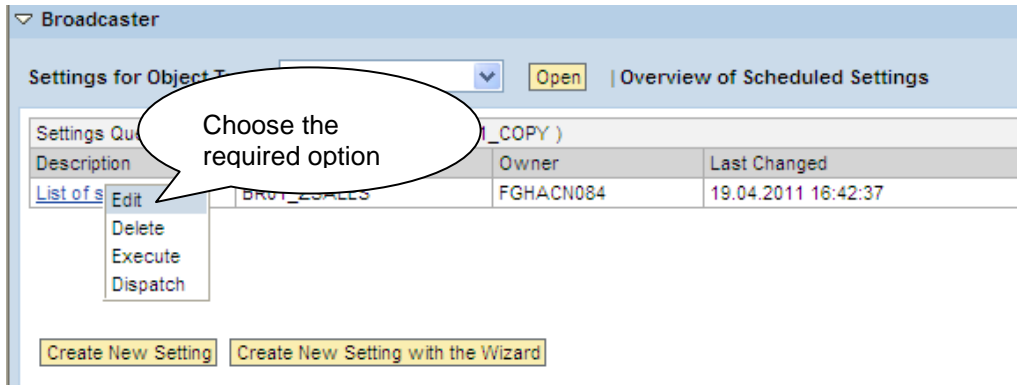
The screenshot shows the 'Recipient(s)' tab in the SAP Query Designer interface. It contains several input fields: 'User', 'User in Role', 'E-Mail Addresses', 'Authorization User', 'Language' (set to 'English'), and 'User-specific' (unchecked). At the bottom, there is a row of buttons: 'Save', 'Save as...', 'Check', 'Schedule', 'Execute', and 'Close'. The 'Execute' button is highlighted with a red circle.

5) After that you will get following pop (Report started from Bex Broadcaster)

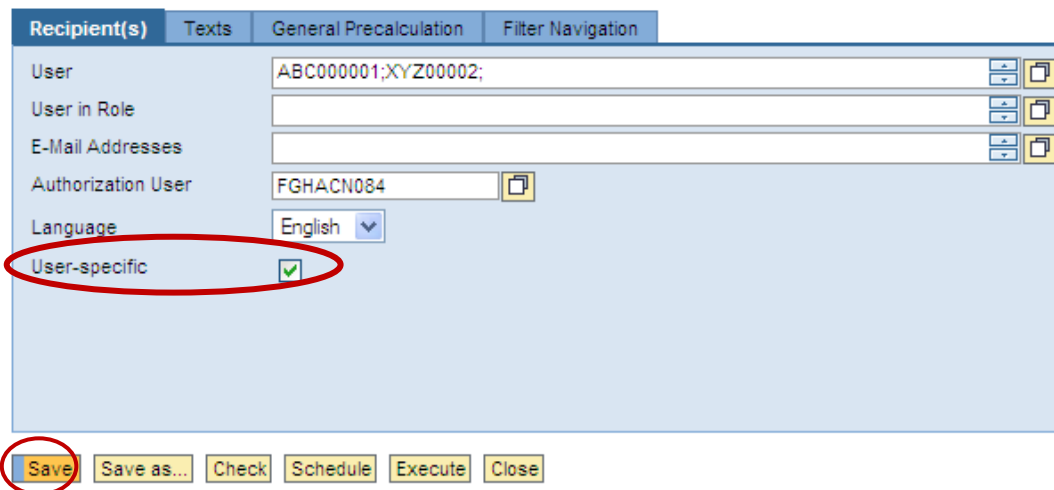


## How to Edit the Existing Broadcaster

- 1) If you need to edit the Existing Broadcaster **RIGHT CLICK** on required Broadcaster, will get the following options (Edit, Delete, Execute and Dispatch)
- 2) Choose which one you required (Ex: Edit).



- 3) Do the modifications as per your requirement. (Ex: Checking the check box User-specific) and click on **SAVE**.



## **Related Content**

<https://help.sap.com>

<https://sdn.sap.com>

[Information Broadcasting](#)

[Example Scenarios for Information Broadcasting](#)

For more information, visit the [EDW homepage](#)

## **Disclaimer and Liability Notice**

This document may discuss sample coding or other information that does not include SAP official interfaces and therefore is not supported by SAP. Changes made based on this information are not supported and can be overwritten during an upgrade.

SAP will not be held liable for any damages caused by using or misusing the information, code or methods suggested in this document, and anyone using these methods does so at his/her own risk.

SAP offers no guarantees and assumes no responsibility or liability of any type with respect to the content of this technical article or code sample, including any liability resulting from incompatibility between the content within this document and the materials and services offered by SAP. You agree that you will not hold, or seek to hold, SAP responsible or liable with respect to the content of this document.