

How to Connect from SAP NetWeaver Developer Studio (NWDS) to Web Application Server (WAS)

Applies to:

SAP NetWeaver Developer Studio (NWDS) version 2.0.7 or 7.0.11 and SAP Web Application Server (WAS) version 6.40.

Summary

SAP NetWeaver Developer Studio is an integrated environment for the development of J2EE-based, multi-tiered business applications. It is based on open-source Eclipse, providing an open and extensible development environment using Java and Web services. SAP has enhanced the standard Eclipse functionality with a comprehensive set of design, construction, and maintenance tools that cover the full software life cycle.

SAP Web Application Server is an SAP delivered homogenous infrastructure for ABAP-based applications as well as for J2EE-based applications. All existing business objects and interfaces can be used the same both in the Java and ABAP environments.

This article is a simple guide to connect WAS from NWDS before going to build or deploy any NWDS application to WAS from NWDS.

Author: Subhendu Bikas Samanta

Company: HCL Technologies Ltd.

Created on: 30 July 2007

Author Bio

Subhendu Bikas Samanta is working in HCL Technologies Ltd, Kolkata as a NetWeaver and Java/J2ee consultant.

Table of Contents

Applies to.....	1
Summary.....	1
Author Bio.....	1
Abbreviation Used.....	2
Server Requirements.....	2
Client Requirements.....	2
Client Configuration.....	2
Prerequisite.....	2
Check the Message Server is running from the command.....	2
Check your machine has installed with NWDS.....	3
Open the NWDS.....	3
Configuration Steps.....	3
Check NWDS is able to connect to remote WAS J2ee Engine.....	4
Related Content.....	5
Disclaimer and Liability Notice.....	6

Abbreviation Used

NWDS → SAP NetWeaver Developer Studio

WAS → SAP Web Application Server

Server Requirements

- a. SAP WAS 6.4 installed and configured on local or remote machine.

Client Requirements

- a. Install J2sdk 1.4.2_15
<http://java.sun.com/j2se/1.4.2/install.html>
- b. Install NWDS 7.0.11

Client Configuration

Prerequisite

- i) WAS Message Server Host Name (say, hdklerpsdf013)
- ii) WAS Message Server Port (say, 3601)

Check the Message Server is running from the command

C:\>telnet hostname port (say, **C:\>telnet hdklerpsdf013 3601**)

If the client has no access to access the service or WAS message server is not running or any network related problems exists then a message will appear at the command prompt

“Connecting To hdklerpsdf013...Could not open connection to the host, on port 3601: Connect failed”

If server is running and you can access the server then a blank screen opens when you execute the above command.

Check your machine has installed with NWDS

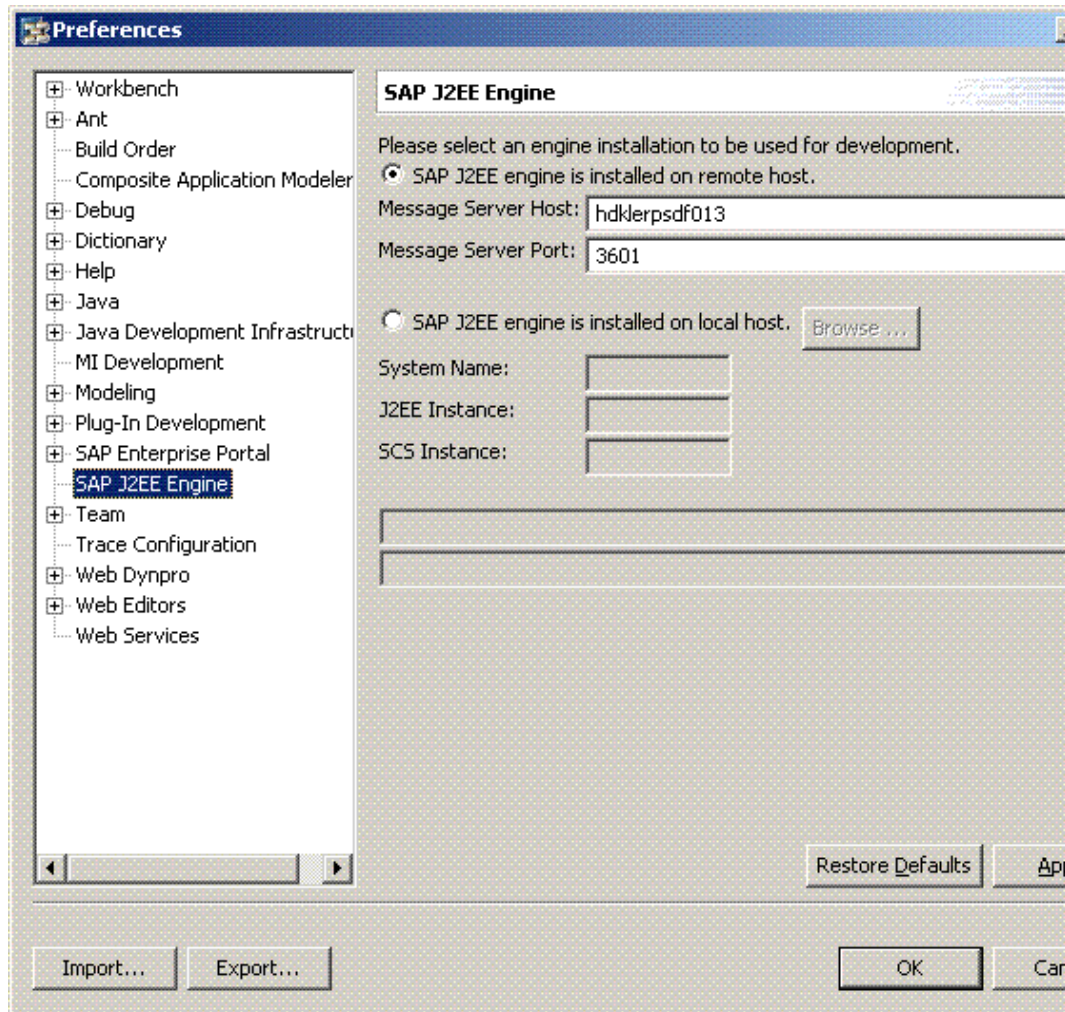
From control panel see if NWDS is installed.

Open the NWDS

From Startup/Installed directory open NWDS.

Configuration Steps

i) From NWDS menus go to **Window** → **Preferences**. When you click on Preferences then the following window opens.



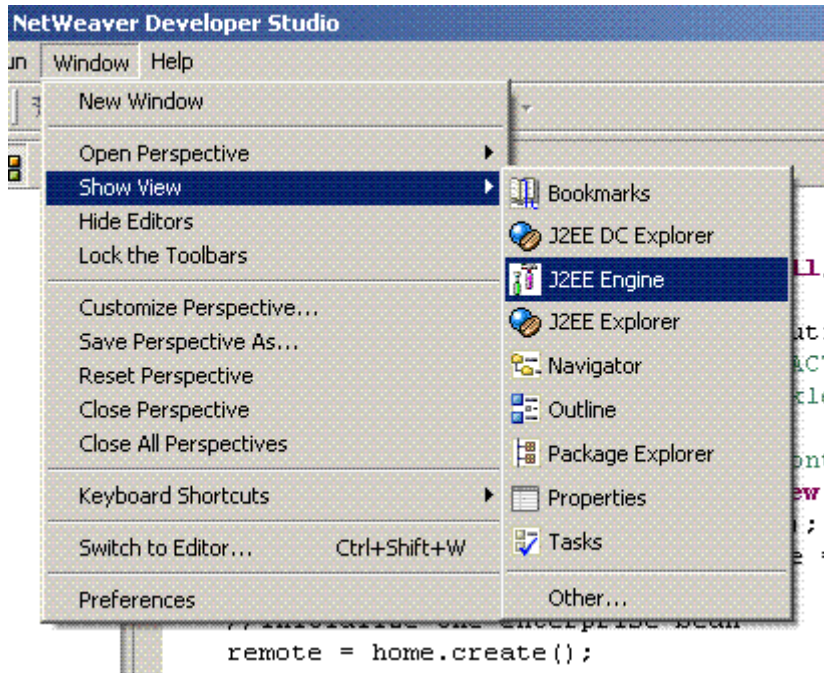
ii). Select **SAP j2EE Engine** from the Preferences left side configuration tree.

iii) Select the first radio button (**SAP J2EE engine is installed on remote host**) at the right side of the window.

iv) Put the Message Server Host name and port into the required place. Then apply the value you entered.

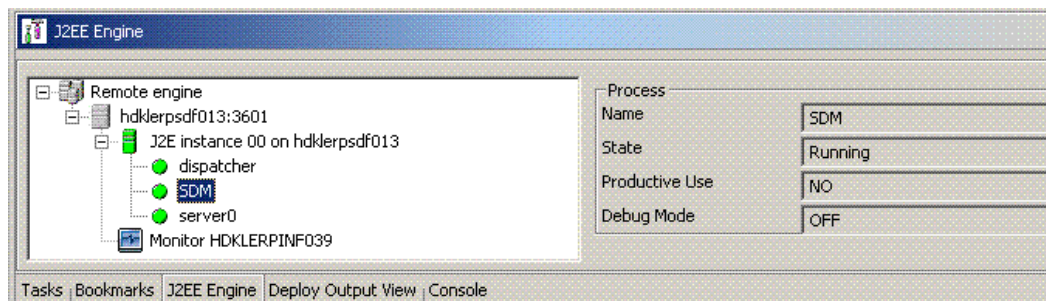
[N.B. If you have WAS J2EE engine installed on your local machine then configure it locally selecting the second radio button (**SAP J2EE engine is installed on local host**) same window and put the appropriate values.]

Check NWDS is able to connect to remote WAS J2ee Engine



a. From NWDS menus go to **Window** → **Show View** → **J2EE Engine** and click on J2EE Engine.

b. Now the following window displays at the below (default position) of the NWDS



c. Now click on the instances, dispatcher, SDM, server0 on the left side tree and get details status of the instances on the right side of the J2EE Engine window. If you see every instance is green-colored then everything is configured. Now build your application and deploy on the remote server from NWDS.

Related Content

[SAP NetWeaver Developer Studio](#)

[SAP Web Application Server Overview](#) (on thespot4sap.com)

[WAS with ABAP and Java](#)

Disclaimer and Liability Notice

This document may discuss sample coding or other information that does not include SAP official interfaces and therefore is not supported by SAP. Changes made based on this information are not supported and can be overwritten during an upgrade.

SAP will not be held liable for any damages caused by using or misusing the information, code or methods suggested in this document, and anyone using these methods does so at his/her own risk.

SAP offers no guarantees and assumes no responsibility or liability of any type with respect to the content of this technical article or code sample, including any liability resulting from incompatibility between the content within this document and the materials and services offered by SAP. You agree that you will not hold, or seek to hold, SAP responsible or liable with respect to the content of this document.