

# BusinessObjects OLAP Intelligence XI

## Improving Performance and Scalability

---

### Overview

This document discusses how to fine-tune your BusinessObjects OLAP Intelligence XI installation for greater performance and scalability.

### Contents

<b>INTRODUCTION</b> .....	<b>2</b>
<b>STARTING MULTIPLE OLAP INTELLIGENCE SESSIONS IN IIS</b> .....	<b>2</b>
<i>Configuring distributed COM properties</i> .....	2
Windows 2000 .....	2
Windows 2003 .....	4
<i>Modifying the web.config file when using Windows 2000</i> .....	6
<b>CONFIGURING FOLDER ACCESS ON WINDOWS 2000</b> .....	<b>7</b>
<b>CONFIGURING MICROSOFT ANALYSIS SERVICES</b> .....	<b>8</b>
<b>FINDING MORE INFORMATION</b> .....	<b>11</b>
<i>Supported platforms</i> .....	11
<i>Configuring Analysis Services security</i> .....	11
<i>Configuring web application servers</i> .....	11

## Introduction

BusinessObjects OLAP Intelligence XI manages the user's session information through the **olapsession** process. By default, this process runs under the ASPNET account (the web application's credentials), which has limited rights and capabilities. Therefore, the performance and scalability of OLAP Intelligence in a large deployment is hindered.

This document discusses how to configure your BusinessObjects OLAP Intelligence XI installation for greater performance and scalability. Specifically, the following topics are covered:

1. Enabling Internet Information Services (IIS) to start more than one OLAP Intelligence session. By default, IIS is able to start only one session.
2. Enabling sufficient access to OLAP Intelligence folders on Windows 2000.
3. Enabling sufficient access to OLAP cubes in Microsoft Analysis Services.

## Starting multiple OLAP Intelligence sessions in IIS

This section discusses how to enable IIS to start more than one OLAP Intelligence session by configuring Distributed COM (DCOM) properties as well as the web.config file (if you are using Windows 2000).

### Configuring distributed COM properties

#### Windows 2000

To enable the ASPNET account to start more than one OLAP session, configure distributed COM (DCOM) properties on Windows 2000 as follows:

1. On the **Start** menu, click **Run**. The **Run** dialog box appears.
2. Type "dcomcnfg" in the **Open** box and then click **OK**. The **Distributed COM Configuration Properties** dialog box appears (Figure 1).

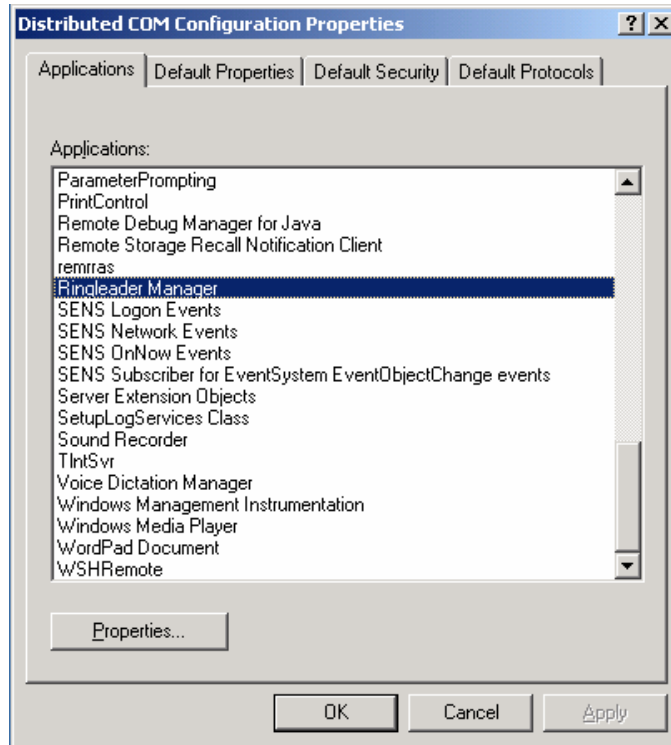


Figure 1

3. On the **Applications** tab, click **Ringleader Manager**, and then click the **Properties** button. The **Ringleader Manager Properties** dialog box appears (Figure 2).

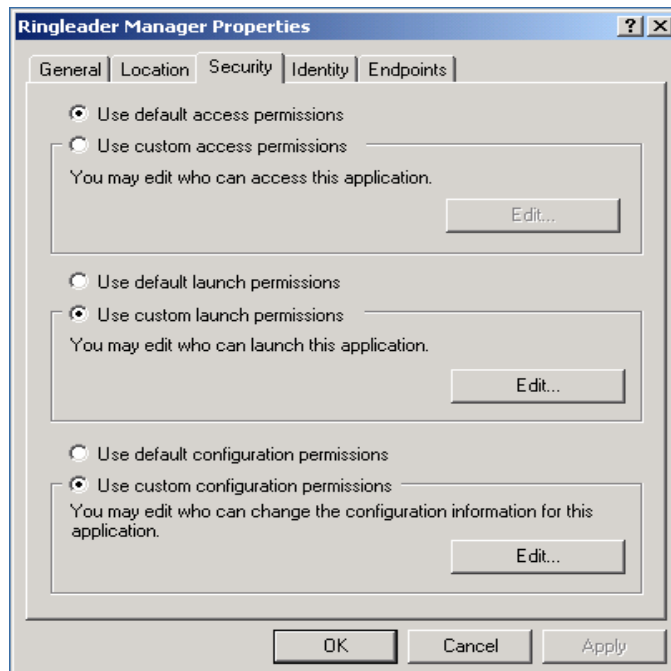
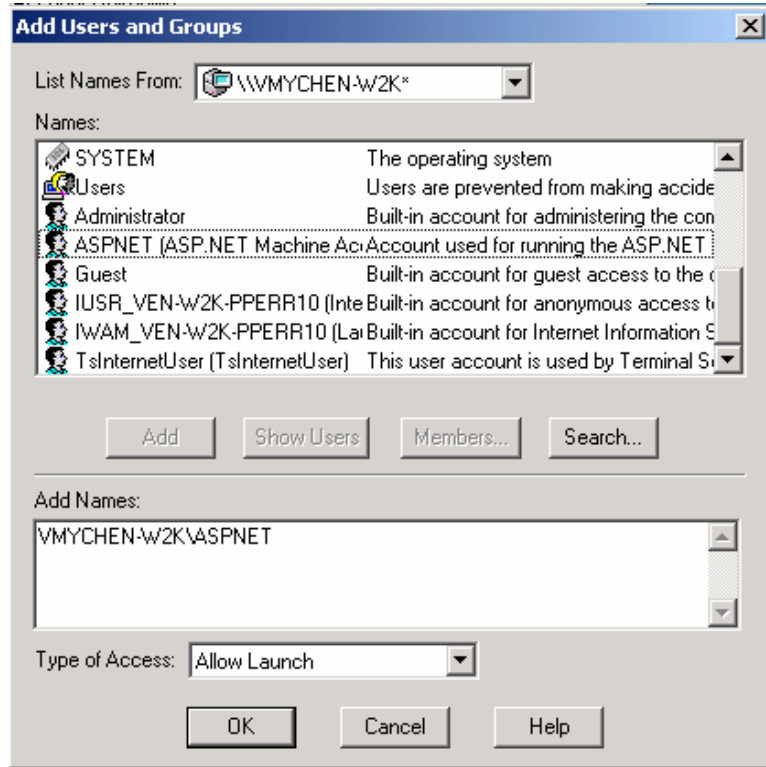


Figure 2

4. On the **Security** tab, click **Use custom launch permissions**, and then click **Edit**. The **Registry Key Permissions** dialog box appears.
5. Add the user ASPNET on the computer where the **olapsessions** process is running (Figure 3).



*Figure 3*

### Windows 2003

To enable the ASPNET account to start more than one OLAP session, configure DCOM properties on Windows 2003 as follows:

1. On the **Start** menu, click **Run**. The **Run** dialog box appears.
2. Type "dcomcnfg" in the **Open** box and then click **OK**. The **Component Services** dialog box appears.
3. Expand **Component Services > Computers > My Computer > DCOM Config** (Figure 4).

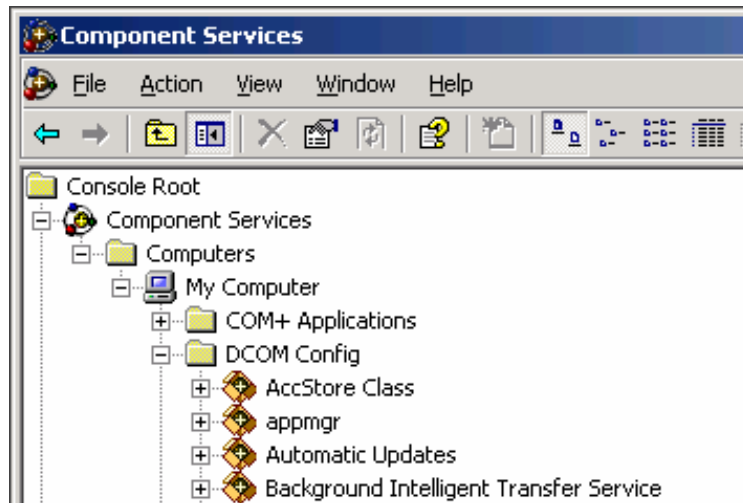


Figure 4

4. Right-click **Ringleader Manager** and then click **Properties**. The **Ringleader Manager Properties** dialog box appears (Figure 5).

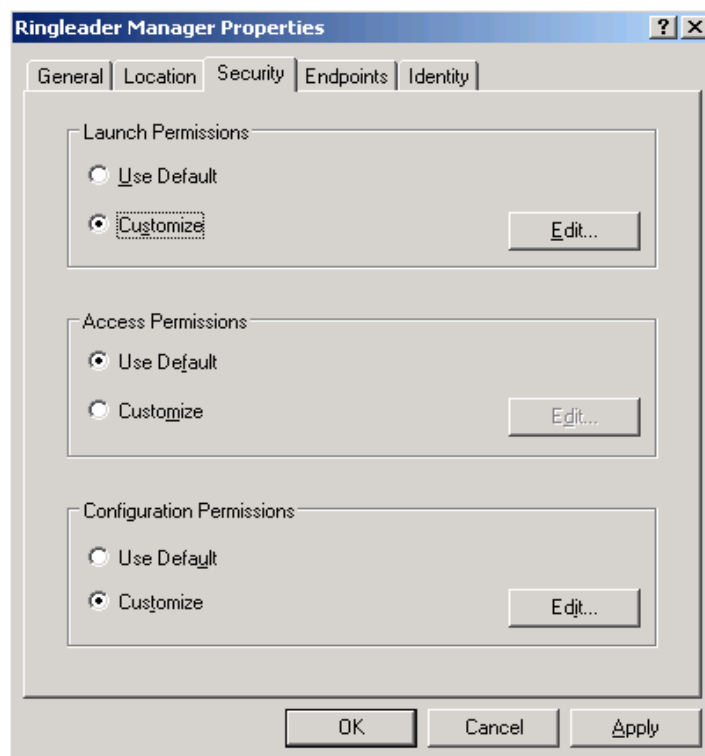


Figure 5

5. On the **Security** tab, click **Customize** in the **Launch Permissions** area, and then click the **Edit** button. The **Launch Permission** dialog box appears.

- Click **NETWORK SERVICE**, select the **Launch Permission** box in the **Allow** column, and then click **OK**. (Figure 6).

<b>NOTE</b>	The ASPNET account is a member of the NETWORK SERVICE group.
-------------	--

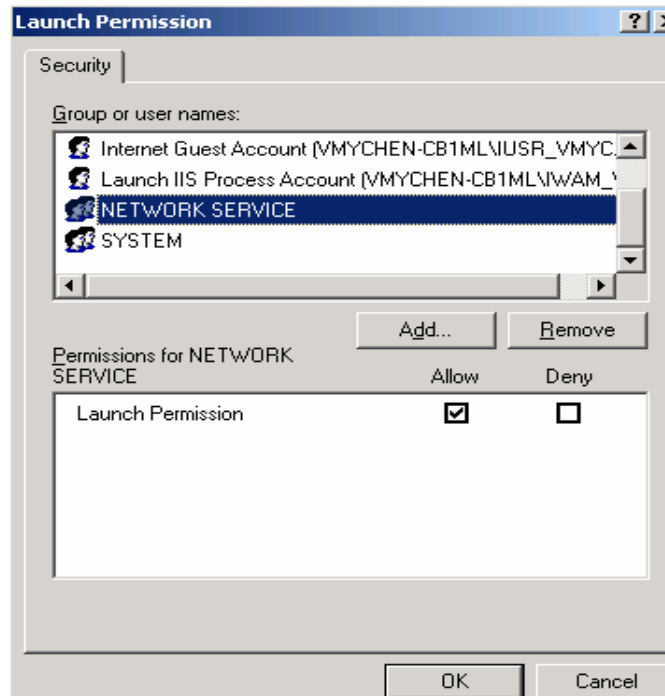


Figure 6

## Modifying the web.config file when using Windows 2000

Due to security limitations of the Windows 2000 ASPNET account when connecting to remote a Microsoft Analysis Services OLAP server, modify the web.config file using these steps:

- Open the web.config file that is located in this folder:

```
... \Program Files\Business Objects\BusinessObjects Enterprise
11\Web Content\Enterprise11\Infoview\
```

- Add the following line to this file:

```
<identity impersonate="true" username={domain\user name}
password={domain users password}/>
```

For example:

```

<!-- AUTHORIZATION
This section sets the authorization policies of the application. You can allow or deny access
to application resources by user or role. wildcards: "*" mean everyone, "?" means anonymous
(unauthenticated) users.
-->
<authorization>
  <allow users="*" />
</authorization>
<identity impersonate="true" username="mydomain\olapuser" password="password" />

```

3. Save and close the file.

## Configuring folder access on Windows 2000

If you are using Windows 2000, complete these steps to enable access the OLAP Intelligence folders:

1. Search for the **businessobjecst\_enterprise11\_infoview** folder found at this location:

```

... \WINNT\Microsoft.NET\Framework\v1.1.4322\Temporary
ASP.NET Files\

```

2. Right-click the folder and click **Properties**.
3. On the **Security** tab, click **Add**. The **Select Users, Computers, or Groups** dialog box appears (Figure 7).

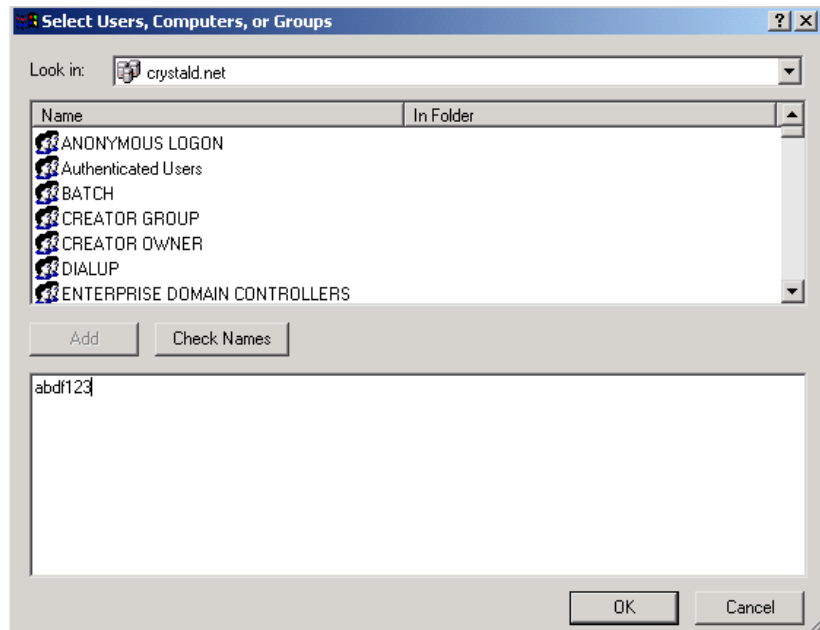


Figure 7

4. Type the user ID that will be performing the impersonation (Figure 8) and click **OK**.

5. Select the **Write** check box under the **Allow** column to grant write permission to the specified user ID and then click **OK**.

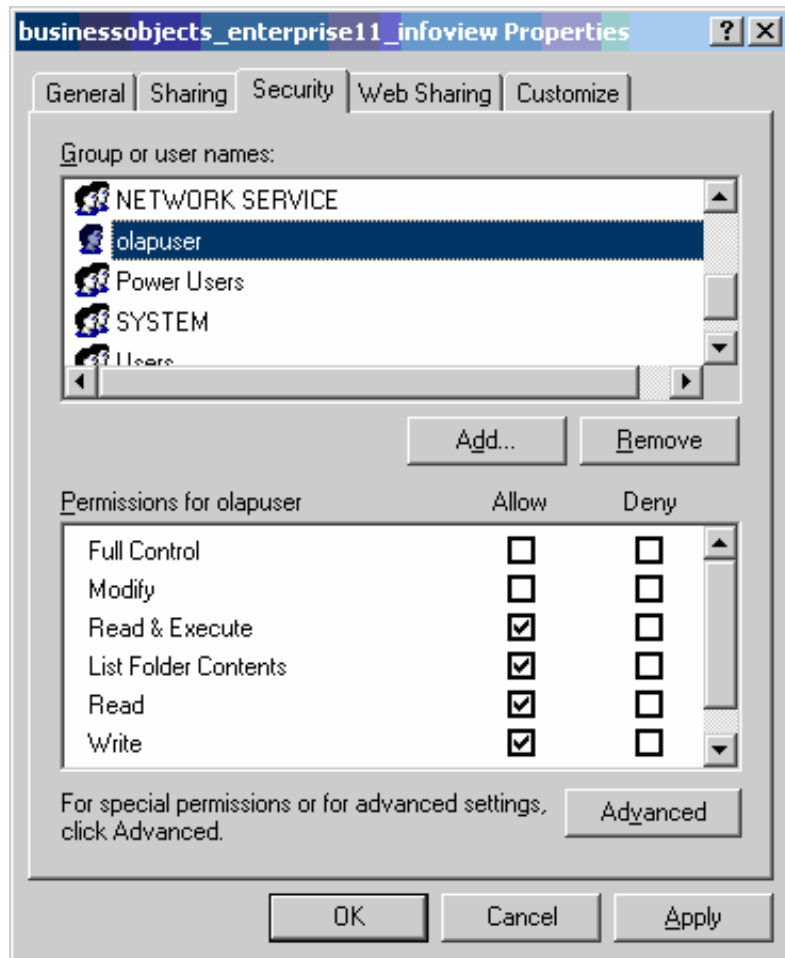


Figure 8

## Configuring Microsoft Analysis Services

To configure Analysis Services to access OLAP cubes, complete these steps:

1. Go to **Start > Programs > Microsoft SQL Server > Analysis Services > Analysis Manager**.
2. Expand **Analysis Servers** and the specific server you wish to configure.
3. Right-click **Database Roles** and then click **Manage Roles**. The **Database Role Manager** appears (Figure 9).



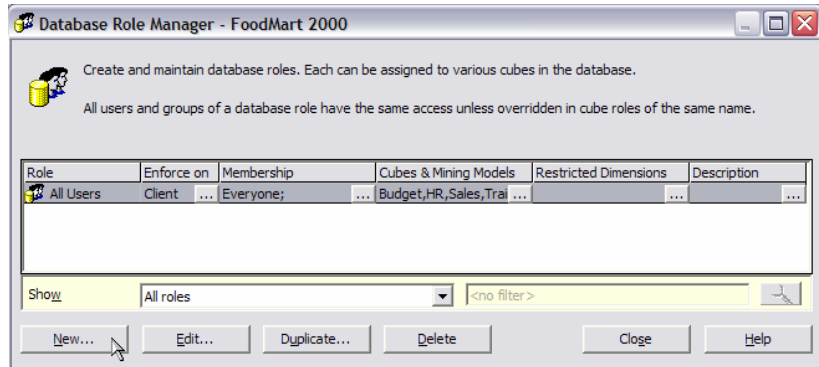


Figure 9

4. Click **New**. The **Create a Database Role** dialog box appears.
5. Click **Add**. The **Add Users and Groups** dialog box appears.
6. Type "Network" in the **Add Names** box, click **Add**, and then click **OK** (Figure 10).

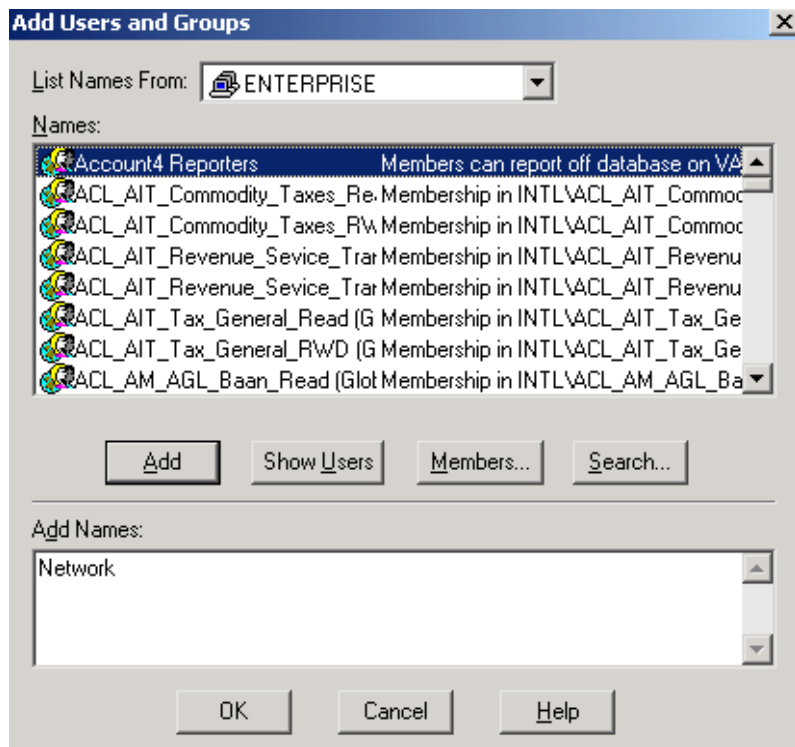


Figure 10

7. On the **Cubes** tab in the **Create a Database Role** dialog box, select the check boxes for the cubes to which you wish to grant access (Figure 11).

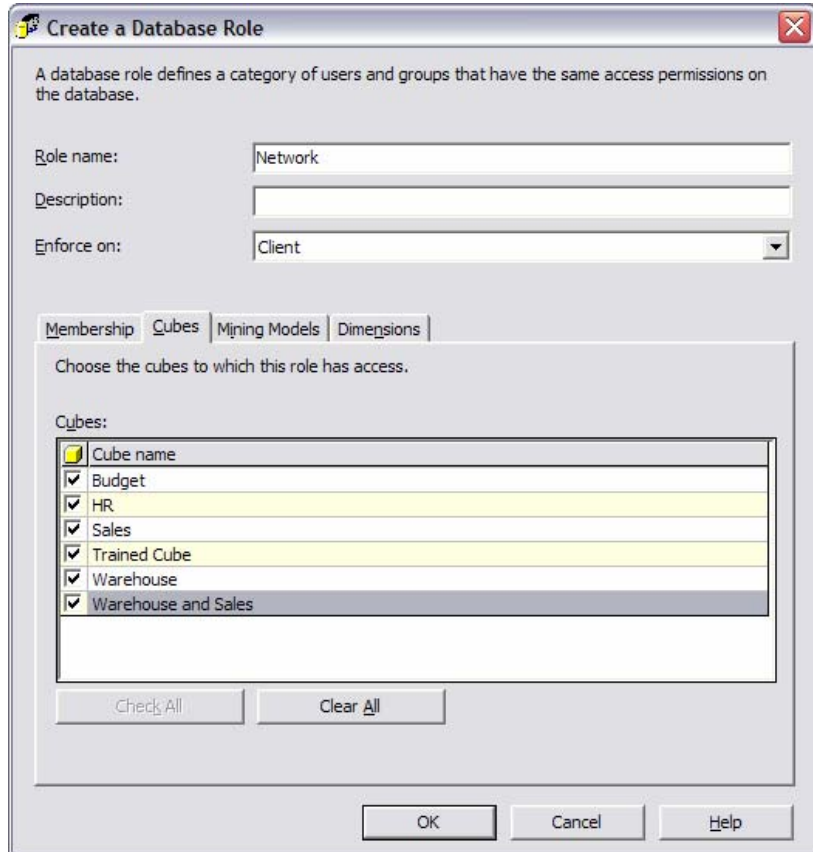


Figure 11

8. Click **OK** and then click **Close** to return to the **Analysis Manager**.

After completing all the steps discussed in this document, you have now fine-tuned your BusinessObjects OLAP Intelligence XI installation for greater performance and scalability.

## Finding more information

### Supported platforms

For more information on BusinessObjects Enterprise XI supported platforms, refer to the document [boe\\_xi\\_supported\\_platforms.pdf](#).

### Configuring Analysis Services security

For more information on how to configure BusinessObjects OLAP Intelligence XI components for a specific security model and server environment, refer to the document [bo\\_olapi\\_xi\\_configuring\\_anlaysia\\_services\\_security.pdf](#).

### Configuring web application servers

For more information on how to configure web application servers to work in conjunction with BusinessObjects OLAP Intelligence XI, refer to the document [bo\\_olapi\\_xi\\_configuring\\_web\\_application\\_servers.pdf](#)

For more information and resources, refer to the product documentation and visit the support area of the web site at

<http://www.businessobjects.com/>

► [www.businessobjects.com](http://www.businessobjects.com)

No part of the computer software or this document may be reproduced or transmitted in any form or by any means, electronic or mechanical, including photocopying, recording, or by any information storage and retrieval system, without permission in writing from Business Objects.

The information in this document is subject to change without notice.

Business Objects does not warrant that this document is error free.

This software and documentation is commercial computer software under Federal Acquisition regulations, and is provided only under the Restricted Rights of the Federal Acquisition Regulations applicable to commercial computer software provided at private expense. The use, duplication, or disclosure by the U.S. Government is subject to restrictions set forth in subdivision (c) (1) (ii) of the Rights in Technical Data and Computer Software clause at 252.227-7013.

The Business Objects product and technology are protected by US patent numbers 5,555,403; 6,247,008; 6,578,027; 6,490,593; and 6,289,352. The Business Objects logo, the Business Objects tagline, BusinessObjects, BusinessObjects Broadcast Agent, BusinessQuery, Crystal Analysis, Crystal Analysis Holos, Crystal Applications, Crystal Enterprise, Crystal Info, Crystal Reports, Rapid Mart, and WebIntelligence are trademarks or registered trademarks of Business Objects SA in the United States and/or other countries. Various product and service names referenced herein may be trademarks of Business Objects SA. All other company, product, or brand names mentioned herein, may be the trademarks of their respective owners. Specifications subject to change without notice. Not responsible for errors or omissions.

Copyright © 2005 Business Objects SA. All rights reserved.