

Creating a New Model



Applies to:

Visual Composer 7.11. For more information, visit the [Portal and Collaboration homepage](#).

Summary

Visual Composer works in a model driven environment. This tutorial explains how to create a new Visual Composer model.

Author: Sivan Brezniak

Company: SAP

Created on: 01 July 2009

Author Bio



Sivan is a Visual Composer software developer working in a Visual Composer development team.

Table of Contents

Overview.....	3
Logging on.....	3
Creating a New Model.....	4
Related Content.....	5
Copyright.....	6

Overview

Visual Composer is a modeling tool. Therefore, it uses a model paradigm as opposed to traditional development languages which use projects. Models are reusable and can be consumed by other models of the same type. Service type models can be consumed also by composite view models as data sources.

Logging on

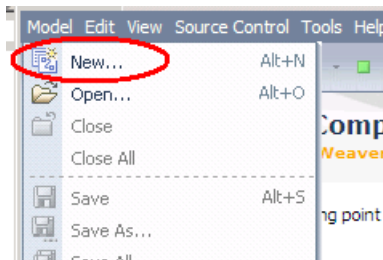
To use Visual Composer, you activate a URL such as the following

`http://<host>:<port>/VC/freestyle.jsp`, and enter your user and password in the logon form:

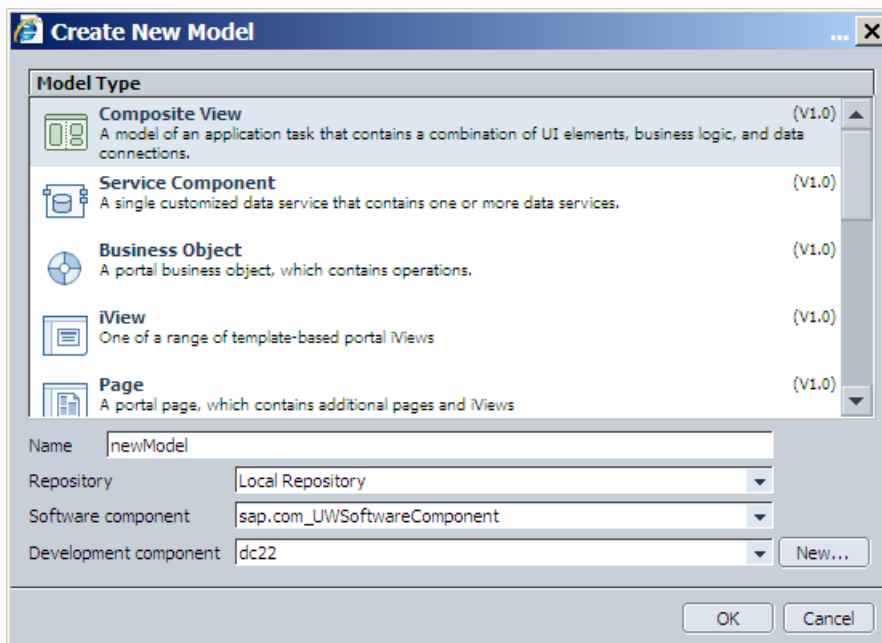


Creating a New Model

1. From the *Model* menu, choose *New*.



2. In the *Create New Model* dialog box:



- a. Choose the desired *Model Type*, for example *Composite View*. There are several types of models, depending on the Visual Composer kits that are installed on your Visual Composer server. The common ones are:
 - i. *Composite View* – A model of an application task, such as searching for and displaying data.
 - ii. *Service Component* – A single customized data service that contains one or more data services.
 - b. Enter the desired model *Name*, for example *newModel*.
 - c. Select a *Repository*, for example *Local Repository*.
 - d. Select a *Software component* (refer to [SAP component model](#)), for example *sap.com_UWSoftwareComponent*
 - e. Select a *Development component* (refer to [SAP component model](#)) or create a new one, for example *dc22*.
3. Choose *OK*

Related Content

- [Creating a Service Component](#)
- [Visual Composer SDN Page](#)

Copyright

© Copyright 2009 SAP AG. All rights reserved.

No part of this publication may be reproduced or transmitted in any form or for any purpose without the express permission of SAP AG. The information contained herein may be changed without prior notice.

Some software products marketed by SAP AG and its distributors contain proprietary software components of other software vendors.

Microsoft, Windows, Excel, Outlook, and PowerPoint are registered trademarks of Microsoft Corporation.

IBM, DB2, DB2 Universal Database, System i, System i5, System p, System p5, System x, System z, System z10, System z9, z10, z9, iSeries, pSeries, xSeries, zSeries, eServer, z/VM, z/OS, i5/OS, S/390, OS/390, OS/400, AS/400, S/390 Parallel Enterprise Server, PowerVM, Power Architecture, POWER6+, POWER6, POWER5+, POWER5, POWER, OpenPower, PowerPC, BatchPipes, BladeCenter, System Storage, GPFS, HACMP, RETAIN, DB2 Connect, RACF, Redbooks, OS/2, Parallel Sysplex, MVS/ESA, AIX, Intelligent Miner, WebSphere, Netfinity, Tivoli and Informix are trademarks or registered trademarks of IBM Corporation.

Linux is the registered trademark of Linus Torvalds in the U.S. and other countries.

Adobe, the Adobe logo, Acrobat, PostScript, and Reader are either trademarks or registered trademarks of Adobe Systems Incorporated in the United States and/or other countries.

Oracle is a registered trademark of Oracle Corporation.

UNIX, X/Open, OSF/1, and Motif are registered trademarks of the Open Group.

Citrix, ICA, Program Neighborhood, MetaFrame, WinFrame, VideoFrame, and MultiWin are trademarks or registered trademarks of Citrix Systems, Inc.

HTML, XML, XHTML and W3C are trademarks or registered trademarks of W3C®, World Wide Web Consortium, Massachusetts Institute of Technology.

Java is a registered trademark of Sun Microsystems, Inc.

JavaScript is a registered trademark of Sun Microsystems, Inc., used under license for technology invented and implemented by Netscape.

SAP, R/3, SAP NetWeaver, Duet, PartnerEdge, ByDesign, SAP Business ByDesign, and other SAP products and services mentioned herein as well as their respective logos are trademarks or registered trademarks of SAP AG in Germany and other countries.

Business Objects and the Business Objects logo, BusinessObjects, Crystal Reports, Crystal Decisions, Web Intelligence, Xcelsius, and other Business Objects products and services mentioned herein as well as their respective logos are trademarks or registered trademarks of Business Objects S.A. in the United States and in other countries. Business Objects is an SAP company.

All other product and service names mentioned are the trademarks of their respective companies. Data contained in this document serves informational purposes only. National product specifications may vary.

These materials are subject to change without notice. These materials are provided by SAP AG and its affiliated companies ("SAP Group") for informational purposes only, without representation or warranty of any kind, and SAP Group shall not be liable for errors or omissions with respect to the materials. The only warranties for SAP Group products and services are those that are set forth in the express warranty statements accompanying such products and services, if any. Nothing herein should be construed as constituting an additional warranty.