

# Transfer Rules/Transformation Migration within the Same BI System



## Applies to:

This applies to SAP Business Warehouse/Business Intelligence. For more information, visit the [BEDW homepage](#).

## Summary

The article talks about the Transfer Rules migration within the system when there is an introduction of new ECC/R3 system connected to the existing BW/BI system. To establish the connection between Data source and the Infsource/target we need to create the transfer rules/transformation for the newly maintained source system. The below procedure describes the steps to follow for the same.

**Author:** Murali Maripalli

**Company:** Capgemini India Pvt Ltd

**Created on:** 16<sup>th</sup> September 2010

## Author Bio



Murali Maripalli is a Senior SAP BW/BI consultant at Capgemini India Pvt Ltd since 2008 onwards and has worked on multiple Implementations/ Support/ Upgrade projects.

## Table of Contents

1. Purpose of Migration.....	3
2. Settings required for collecting Transfer Rules.....	3
3. Settings before collecting the transports in transport connector .....	4
4. Importing the transport.....	5
5. Settings after the Migration.....	8
6. Conclusion .....	8
Related Content.....	9
Disclaimer and Liability Notice.....	10

## 1. Purpose of Migration

When ever a client introduces a new source system in place of the existing source system, let's say the present BI systems is having 4.6x as source which will gets replaced with the new ECC6.0 source system; for this purpose there is a need to migrate all the transfer rules/transformation from 4.6c to ECC6.0 in order to retire the old system in future. This migration will enable the loads from the new source.

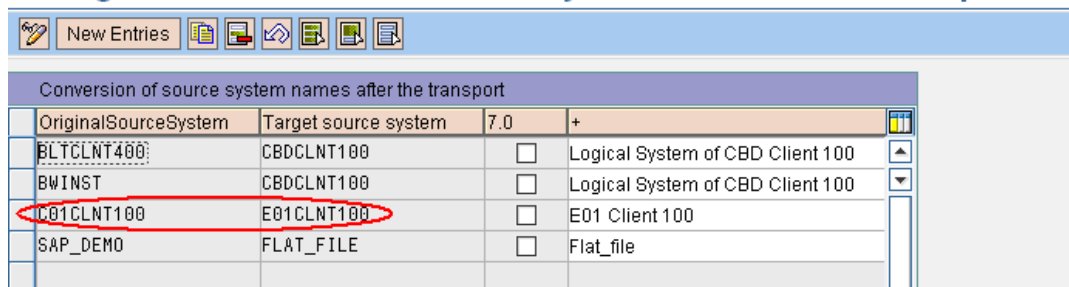
## 2. Settings required for collecting Transfer Rules

The following settings need to be enabled before collecting the objects in the BI system.

In the present case, we have C01 as 4.6c source and E01 as ECC 6.0 source system in which you need to migrate all the transfer rules.

Make sure that there is an entry at the Conversion of the Source Systems from C01 to E01 which will enable allow the conversion of source system names during the import–

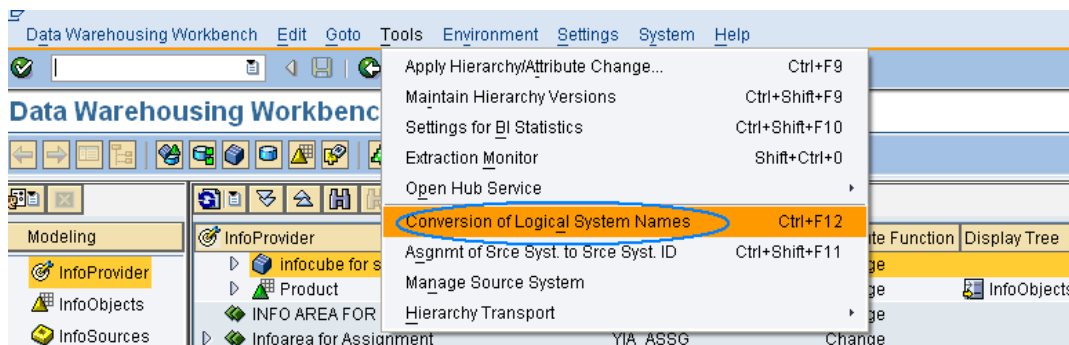
### Change View "Conversion of source system names after the transport": O



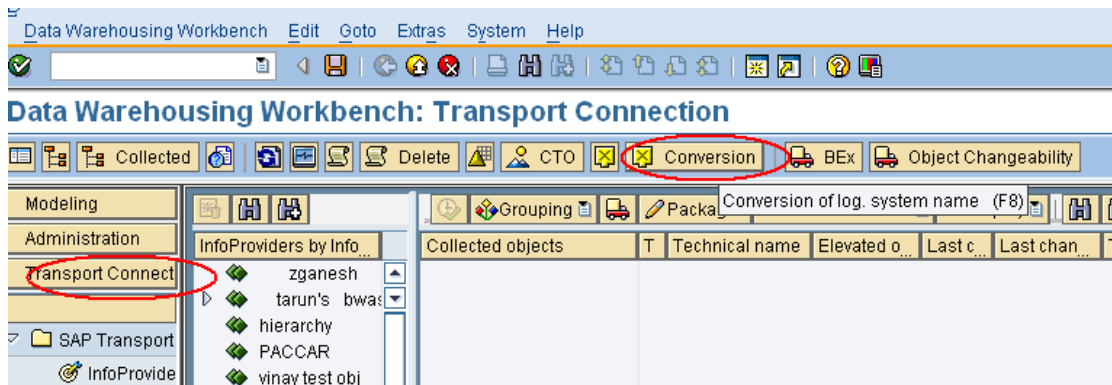
OriginalSourceSystem	Target source system	7.0	+
BLTCLNT400:	CBDCLNT100	<input type="checkbox"/>	Logical System of CBD Client 100
BWINST	CBDCLNT100	<input type="checkbox"/>	Logical System of CBD Client 100
<b>C01CLNT100</b>	<b>E01CLNT100</b>	<input type="checkbox"/>	E01 Client 100
SAP_DEMO	FLAT_FILE	<input type="checkbox"/>	Flat_file

For maintaining these settings follow the below path →

RSA1 → Menu bar → Tools → Conversion of Logical System Names.



OR this can be achieved from the transport connector → Conversions

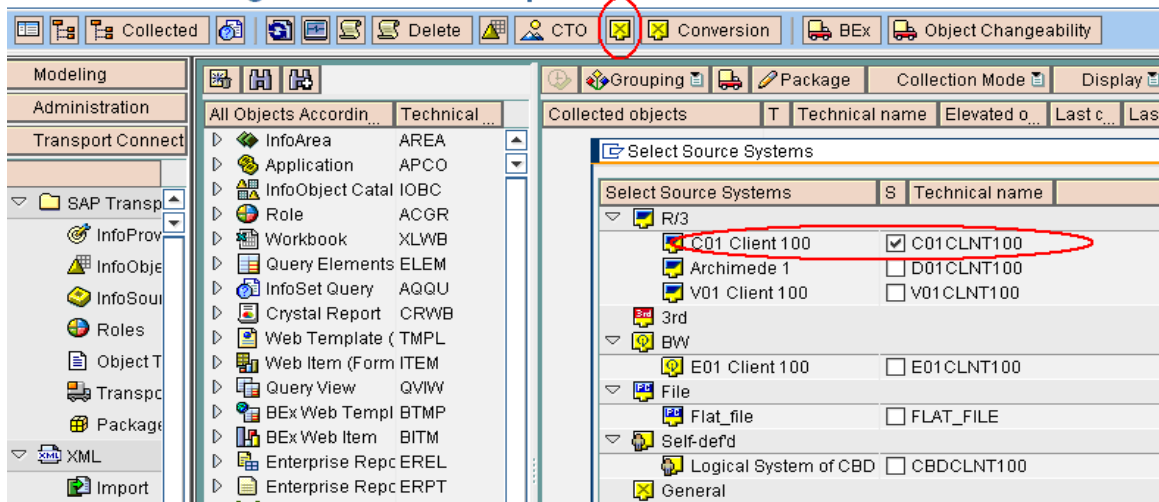


This conversion setting allows the Conversion of systems during the import of the transport.

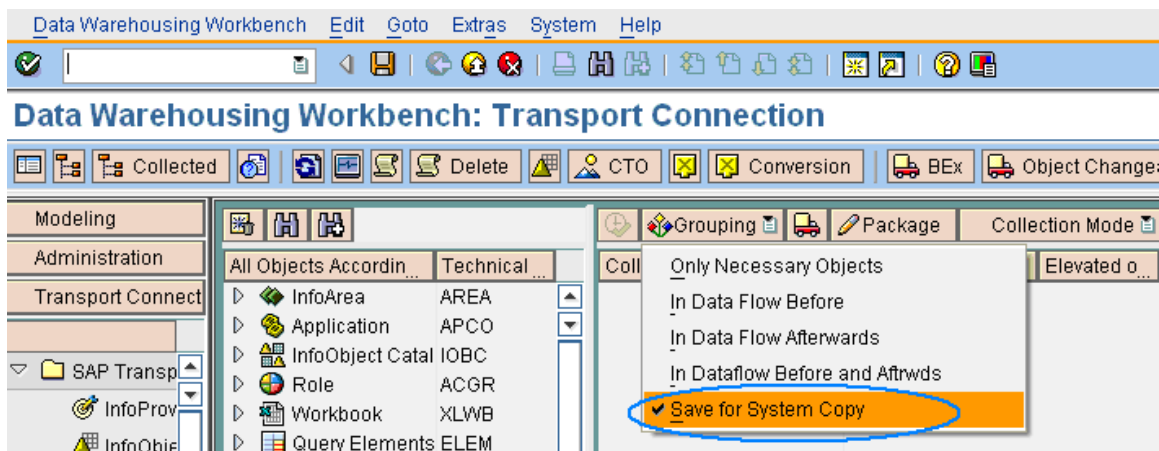
### 3. Settings before collecting the transports in transport connector

Select the appropriate source system from where the Transfer Rules are migrating in Transport connector. In this case it's **C01CLNT100**.

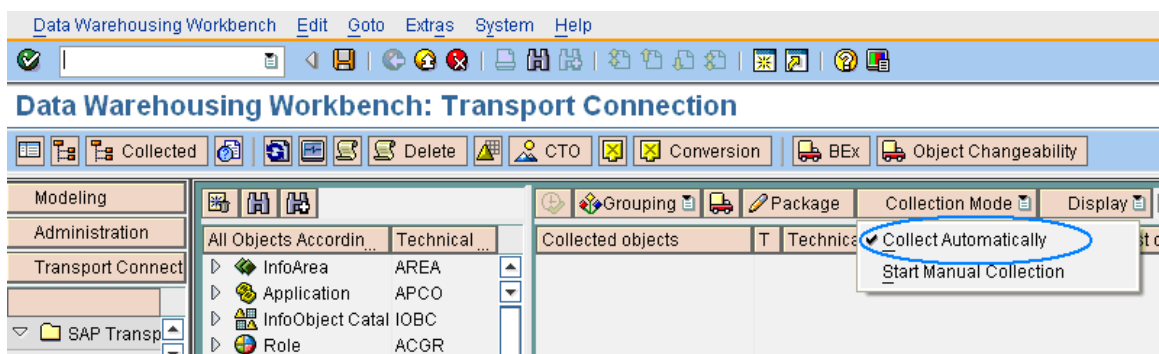
#### Data Warehousing Workbench: Transport Connection



Take Grouping option as **Save a System Copy**:



Collection Mode is set to **Automatic**:

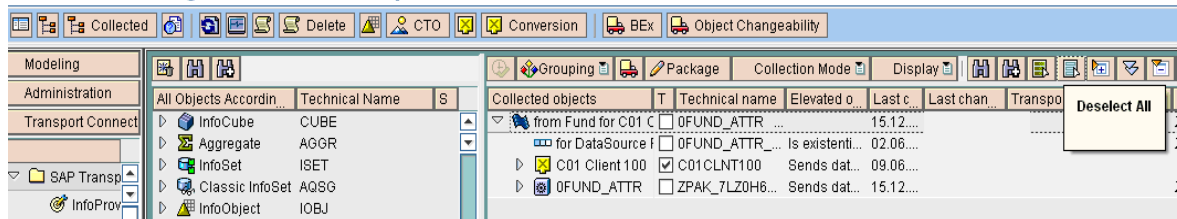


Select the required transfer rules (in this case it's for all transfer rules) and then collect the same in the Transport →

**For Example:** for migrating 0FUND\_ATTR to E01 system from C01:

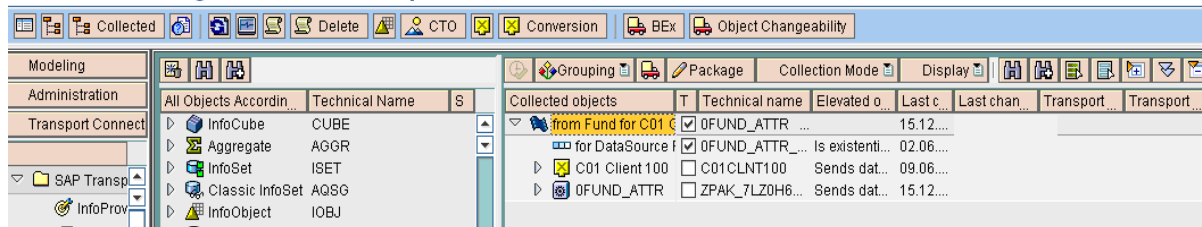
Deselect the entries once selected in the transport Organizer –

#### Data Warehousing Workbench: Transport Connection



And then select only the Transfer Rules and the Transfer Structure as shown below.

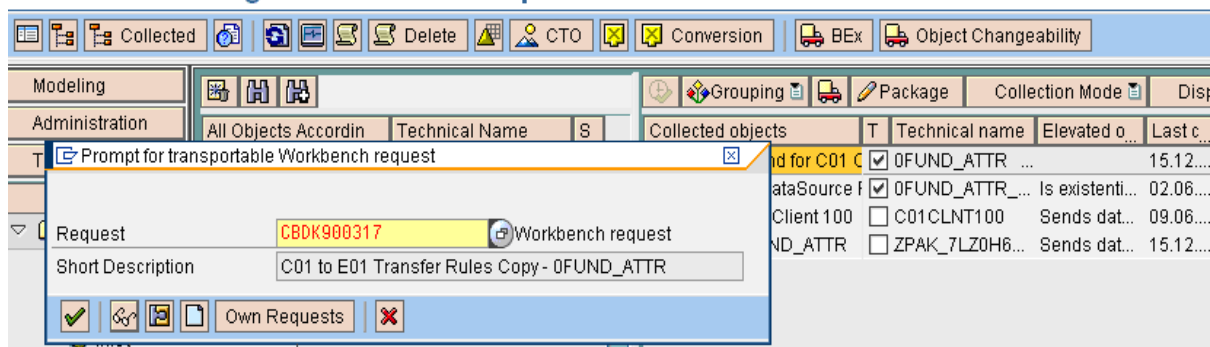
#### Data Warehousing Workbench: Transport Connection



Make sure that the necessary objects collected with the proper package.

Collect the selected objects in the transport →

#### Data Warehousing Workbench: Transport Connection

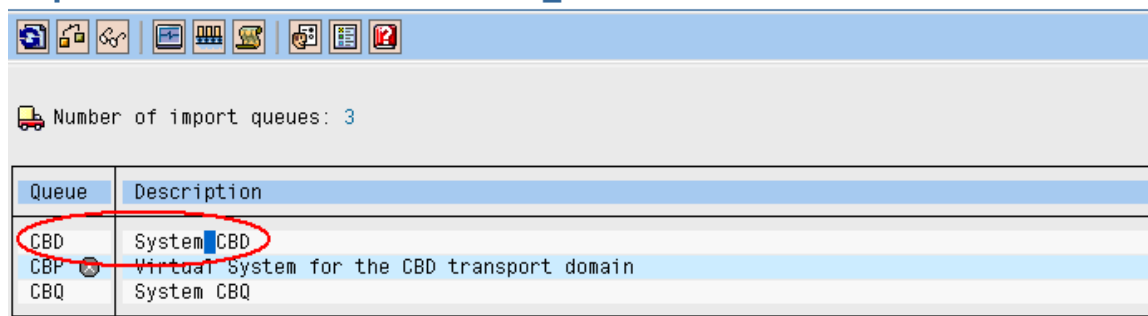


Once after collecting objects in transport, release the same from SE01 in order for the importing.

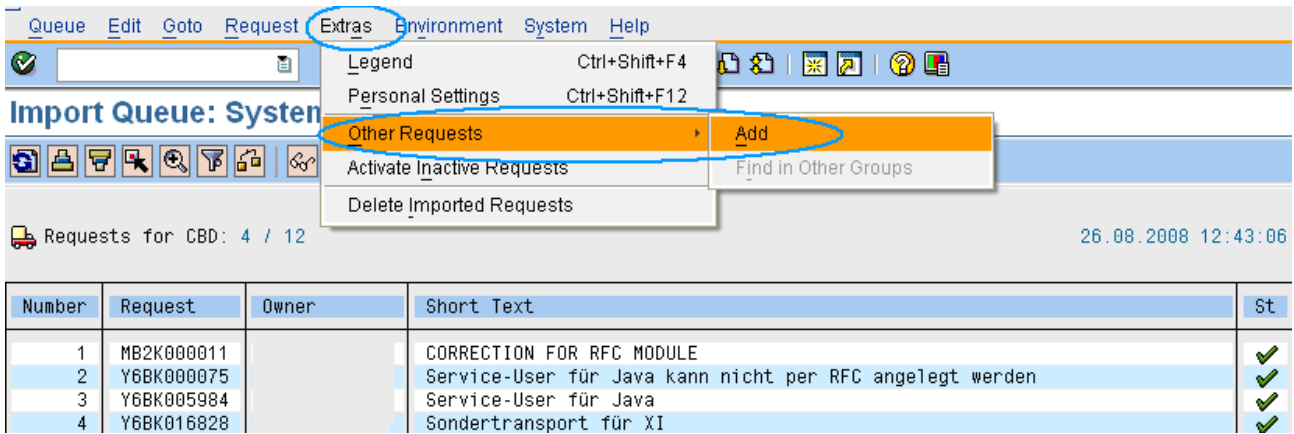
## 4. Importing the transport

Goto STMS in the same Development system in this case it's CBD.

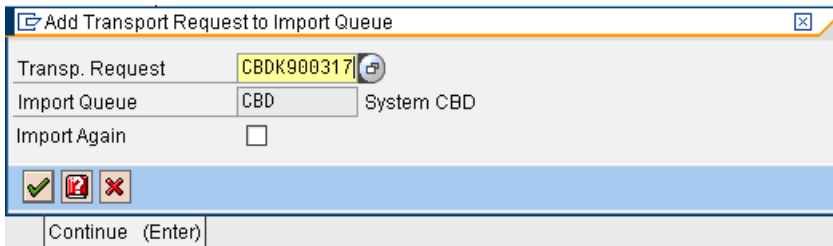
#### Import Overview: Domain DOMAIN\_CBD



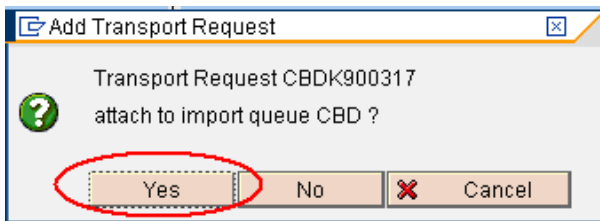
In the Import Queue screen **add** the transport request going to menubar → **Extras** → **Add** →



Provide the transport number in **Transp. Request** as shown below:

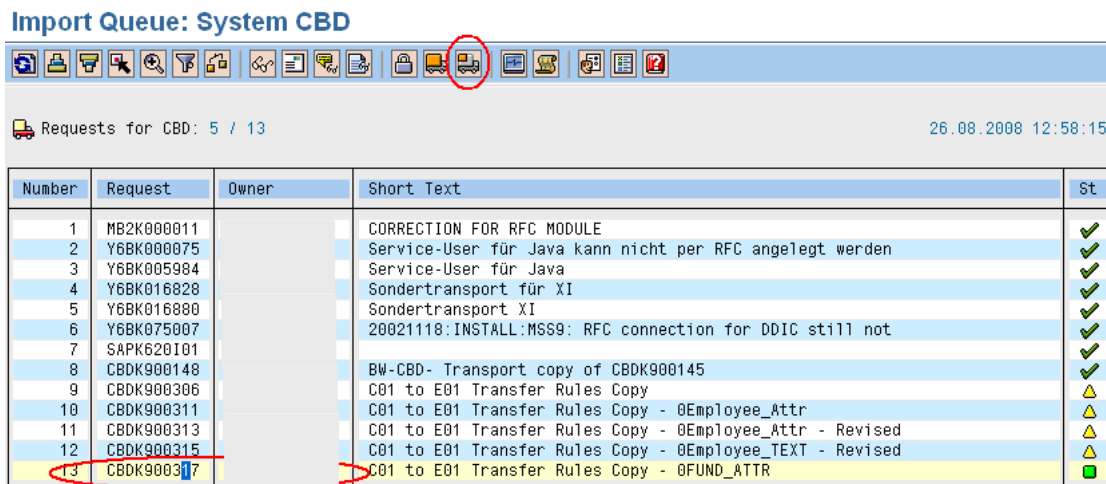


Say **Continue**.



Select **Yes**.

After this the transport entry will be made in the import queue as shown below:



Now import the same →

### Import Queue: System CBD

Number	Request	Owner	Short Text	St
1	MB2K000011		CORRECTION FOR RFC MODULE	✓
2	Y6BK000075		Service-User für Java kann nicht per RFC ang...	
3	Y6BK005984		Service-User für Java	
4	Y6BK016828		Sondertransport für XI	
5	Y6BK016880		Sondertransport XI	
6	Y6BK075007		20021118: INSTALL: MSS9: RFC connection for DC	
7	SAPK620101			
8	CBK900148		BW-CBD- Transport copy of CBK900145	
9	CBK900306		C01 to E01 Transfer Rules Copy	
10	CBK900311		C01 to E01 Transfer Rules Copy - 0Employee_	
11	CBK900313		C01 to E01 Transfer Rules Copy - 0Employee_	
12	CBK900315		C01 to E01 Transfer Rules Copy - 0Employee_	
13	CBK900317		C01 to E01 Transfer Rules Copy - 0FUND_ATTR	

Requests for CBD: 5 / 13      26.08.2008 12:58:15

Import Transport Request  
 Transport Request: CBK900317    C01 to E01 Transfer Rules Copy - 0FUND\_A  
 Target System: CBD    System CBD  
 Target Client: 100    Targ.Client=Source Client

Import Options  
 Leave Transport Request in Queue for Later Import  
 Import Transport Request Again  
 Overwrite Originals  
 Overwrite Objects in Unconfirmed Repairs  
 Ignore Non-Permitted Transport Type

Select **Yes**.

Check log of the transport →

### Overview of Transport Logs

Display restricted to target system CBD

Log overview for requests from import queue CBD

- CBK900317    C01 to E01 Transfer Rules Copy - 0FUND\_ATTR
  - CBD    System CBD
    - Checks at Operating System Level    26.08.2008 12:55:40    (0) Successfully Completed
    - Pre-Export Methods    26.08.2008 12:55:42    (0) Successfully Completed
    - Export    26.08.2008 12:55:49    (0) Successfully Completed
    - Selection for Import    26.08.2008 12:58:15    (0) Successfully Completed
    - Import    26.08.2008 12:59:24    (4) Ended with Warning
    - Check Versions    26.08.2008 12:59:25    (0) Successfully Completed
    - Method Execution    26.08.2008 12:59:54    (0) Successfully Completed
    - Import steps not specific to transport request

Check for the new transfer rule entry with the Source system E01 in **RSA1** →

### Data Warehousing Workbench: Modeling

Modeling	InfoSources	Tech. Name	M...	Execute Function	Display Tree	Ob...	Object Informati...
	Non-SAP Sources	0NON_SAP_SYSTE...		Change			
	SAP Application Components	SAP		Change			
	Infosources R/3 non BCT	ZSAPR/3		Change			
	SAP R/3 Application Components	SAP-R/3		Change			
	Logistics - General	LO		Change			
	cProjects	DCPR		Change			
	Accounting - General	AC		Change			
	Financial Accounting	FI		Change			
	Funds Management	0FI_FM		Change			
	Funds Management Master Data	0FI_FM-IO		Change			
	Application of Secondary Source Funds	0AP_OF_FUND		Change			InfoObjects
	Financial management area	0FM_AREA		Change			InfoObjects
	Fund	0FUND		Change			InfoObjects
	Fund (Hierarchies)	HIERARCHIES 0FU...		Maintain Hierar...			InfoSources
	Fund (Attribute)	ATTRIBUTES 0FUND		Manage			InfoSources
	from Fund for C01 Client 100	0FUND_ATTR		Change			
	from Fund for E01 Client 100	0FUND_ATTR		Change			
	Fund	0FUND_ATTR		Change			DataSources   E01CLNT100
	from Fund for V01 Client 100	0FUND_ATTR		Change			
	Fund (Texts)	TEXTS 0FUND		Manage			InfoSources
	Fund Type	0FUNDTYPE		Change			InfoObjects

Now you can see the new entry has made for the source E01. This way one can collect all the transfer rules and then migrate to the new source system.

## 5. Settings after the Migration

Conversion of the Source Systems in Development system:

### In Development system:

#### Change View "Conversion of source system names after the transport": O

OriginalSourceSystem	Target source system	7.0	+
BLTCLNT400	CBDCCLNT100	<input type="checkbox"/>	Logical System of CBD Client 100
BWINST	CBDCCLNT100	<input type="checkbox"/>	Logical System of CBD Client 100
C01CLNT100	C01CLNT100	<input type="checkbox"/>	C01 Client 100
E01CLNT100	E01CLNT100	<input type="checkbox"/>	E01 Client 100
SAP_DEMO	FLAT_FILE	<input type="checkbox"/>	Flat_file
V01CLNT100	C01CLNT100	<input type="checkbox"/>	C01 Client 100

Make sure that there are two entries, one is for C01 and the other one is for E01 in order to receive the changes from both the systems. C01 should be there till the system gets retire.

### In Quality System:

#### Change View "Conversion of source system names after the transport":

OriginalSourceSystem	Target source system	7.0	+
BWINST	CBQCLNT605	<input type="checkbox"/>	Syst. Log. du BW de TEST
C01CLNT100	QASCLNT605	<input type="checkbox"/>	QAS Client 605
CBDCCLNT100	CBQCLNT605	<input type="checkbox"/>	Syst. Log. du BW de TEST
CBWCLNT100	CBQCLNT605	<input type="checkbox"/>	Syst. Log. du BW de TEST
D01CLNT100	QASCLNT605	<input type="checkbox"/>	QAS Client 605
E01CLNT100	QASCLNT605	<input type="checkbox"/>	QAS Client 605
FLAT_FILE	FLAT_FILE	<input type="checkbox"/>	Flatfile

In Quality system conversion of source systems needs to be maintained for both C01 and E01 against to the source systems of the Quality. This will allow the transport to import without having any issues for the objects which carries the source systems along with it (As in the case of transfer rules data source replica etc.).

Without these settings the transport can not be imported fine for the objects which carry the source system names.

Similarly we need to maintain the same settings in the production system as well.

## 6. Conclusion

Also this is needed when there is a requirement to do the system consolidation by maintaining multiple source systems connection with one BI system. For example: If Client has multiple Source systems based on the Zone/Branch wise and want to connect to one BI consolidate system so that the number of BI systems can be reduced. This will reduce the overall maintenance cost of the BW systems.



## Related Content

For more information, visit the [BEDW homepage](#).

## **Disclaimer and Liability Notice**

This document may discuss sample coding or other information that does not include SAP official interfaces and therefore is not supported by SAP. Changes made based on this information are not supported and can be overwritten during an upgrade.

SAP will not be held liable for any damages caused by using or misusing the information, code or methods suggested in this document, and anyone using these methods does so at his/her own risk.

SAP offers no guarantees and assumes no responsibility or liability of any type with respect to the content of this technical article or code sample, including any liability resulting from incompatibility between the content within this document and the materials and services offered by SAP. You agree that you will not hold, or seek to hold, SAP responsible or liable with respect to the content of this document.