

Applies to:

SAP BW 3.x & SAP BI NetWeaver 2004s. For more information, visit the [Business Intelligence homepage](#).

Summary

The objective of this Article is to share some tips and tricks on the Process chain.

Author: Chandiraban singu

Company: Capgemini

Created on: 24 August 2009

Author Bio



The author is a NetWeaver 2004s Certified Consultant. He has been involved in SAP BW Implementation and Support Services.

Table of Contents

Overview	3
Process chain:	3
Transaction code used in Process chain management.....	3
How to copy the Process Chain?	3
How to Get the Process chain name from the Job (SM37)?	5
How to add Process chain in RSPCM?	7
How to remove Process chain from schedule?	7
How to move the Process chain from one directory (Display Grouping) to another?	8
How to find the Parent Meta chain of the Process chain with "Start Using Meta Chain or API" selection?	9
Related Content	10
Disclaimer and Liability Notice	11

Overview

Process chain:

A Process chain is a sequence of processes that wait in the background for an event. Some of these processes trigger a separate event that can start other processes in turn.

If you use Process chains, you can

- **automate** the complex schedules in BW with the help of the event-controlled processing,
- **visualize** the schedule by using network applications, and
- **centrally control and monitor** the processes.

This article will provide you a few (Seven) tips in the management of Process chain.

1. Transaction code used in Process chain management.
2. How to copy the Process Chain?
3. How to Get the Process Chain name from the Job (SM37)?
4. How to add Process chain in RSPCM?
5. How to remove Process chain from schedule?
6. How to move the Process chain from one directory to another?
7. How to find the Parent Meta chain of the process chain with "Start Using Meta Chain or API" selection?

Transaction code used in Process chain management.

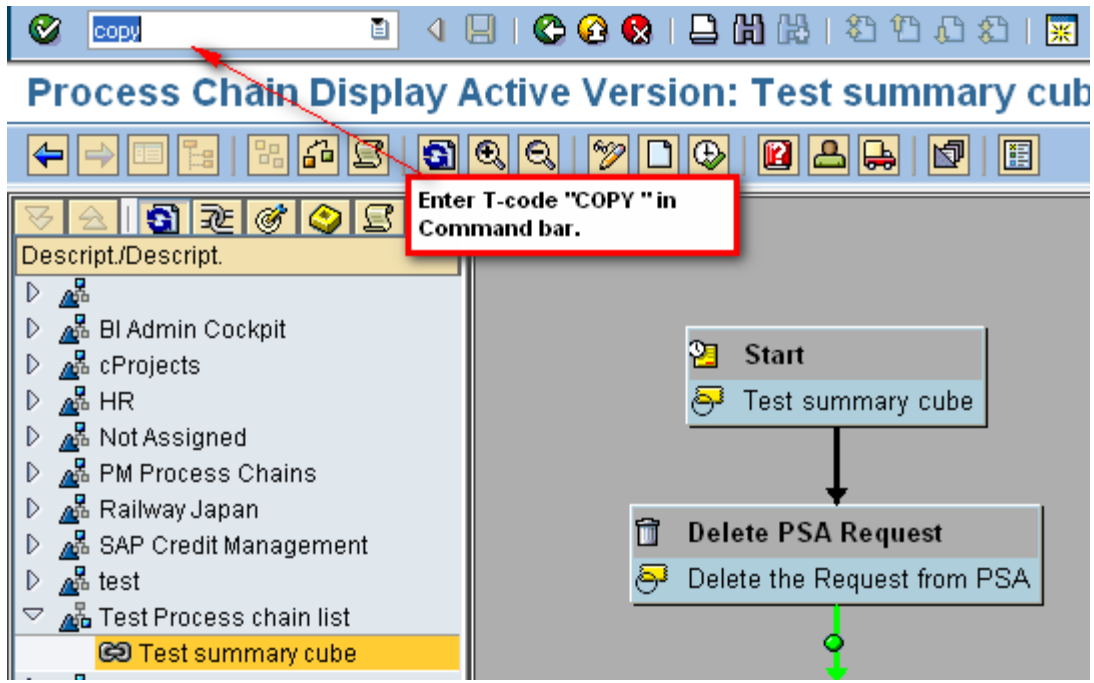
The few transaction codes used to manage the Process chain.

RSPC	=> Process Chain Maintenance
RSPCM	=> Monitor daily process chains
RSPC1	=> (Single) Process Chain Display
RZ20	=> CCMS Monitoring
BWCCMS	=> CCMS Monitor for BW

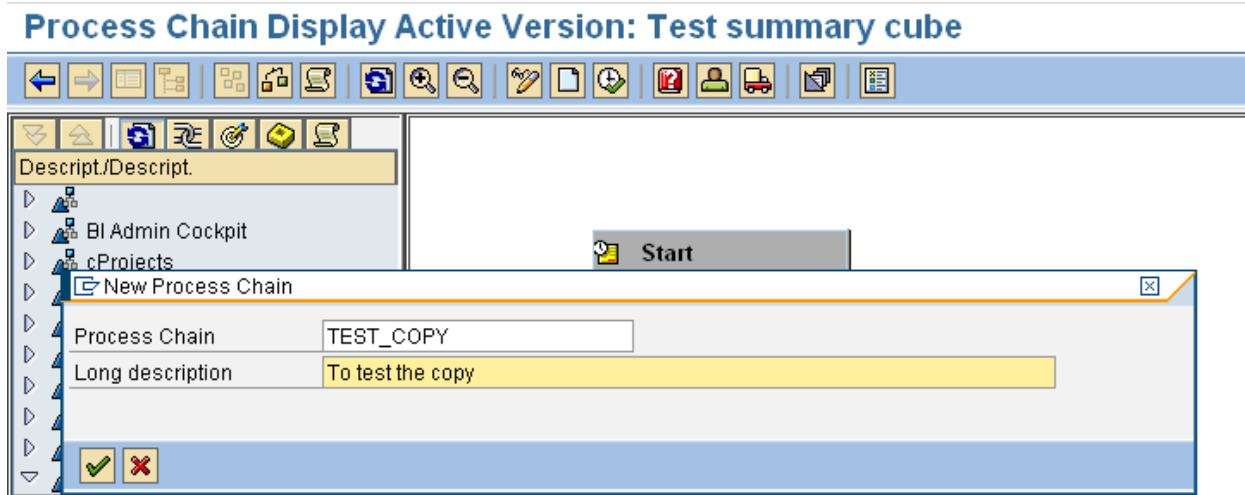
How to copy the Process Chain?

The below steps explain the procedure to copy the existing Process chain within the system.

- From the Process chain "Planning View" , Transaction Code => RSPC.
- Open the interested Process Chain, Double click on the Process Chain.
- To copy the process chain, enter the transaction code "COPY".



- Enter the Name and Description for new Process Chain in the prompted window.



- Thus the process chain is copied, Activate and Schedule with the required modification.

Process Chain Maintenance Modified Version To test the copy

The screenshot shows the SAP Process Chain Maintenance interface. On the left, a tree view lists various process chains, with 'Test summary cube' selected. On the right, a process chain diagram is displayed, consisting of three steps: 'Start' (Test summary cube), 'Delete PSA Request' (Delete the Request from PSA), and 'Load Data' (ZSUMMADV1_DS). A red box highlights the text 'To test the copy' in the title bar.

How to Get the Process chain name from the Job (SM37)?

The below steps explains the procedure to get the Process chain name from the job name.

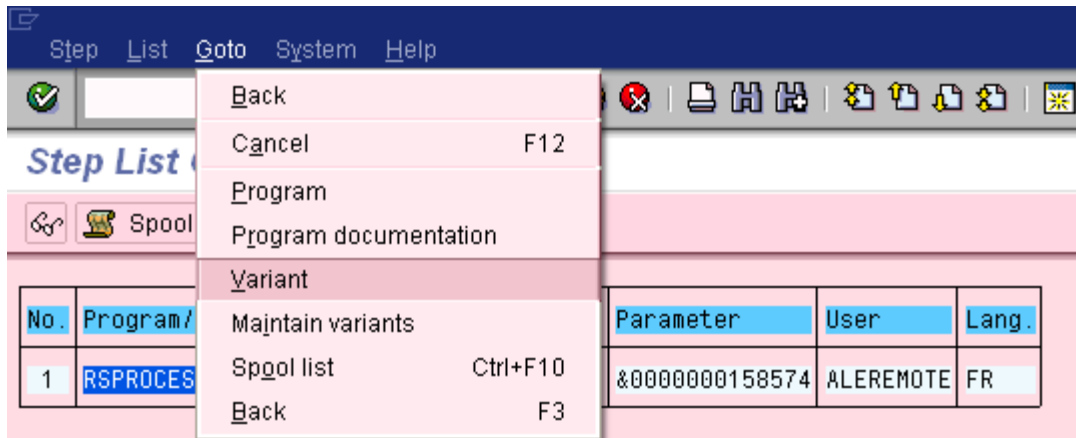
- Go to SM37.
- All those jobs that have name BI_PROCESS_TRIGGER are created and triggered by process chains.
- Select the interested job and click on Step

Job Overview

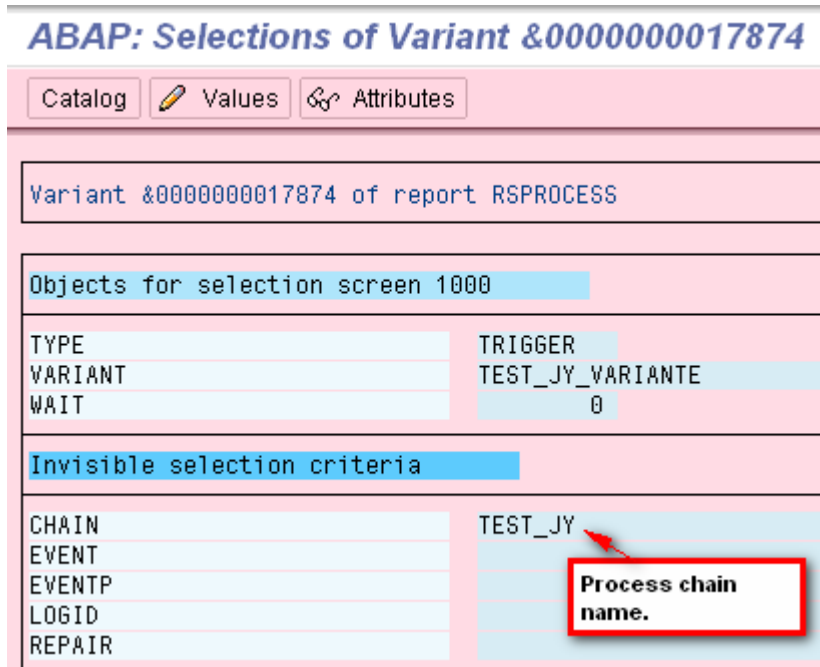
The screenshot shows the SAP SM37 Job Overview screen. The 'Step' button is highlighted with a red box and a callout that says "Select interested job and click on Step." Below the buttons, job details for "BI_PROCESS_TRIGGER" are shown, including a table with columns: Job, Ln, Job CreatedBy, Status, Start date, Start time, and Duration(sec.).

Job	Ln	Job CreatedBy	Status	Start date	Start time	Duration(sec.)
BI_PROCESS_TRIGGER		ALEREMOTE	Complete	17.08.2009	03:30:44	8
BI_PROCESS_TRIGGER		ALEREMOTE	Complete	17.08.2009	03:30:53	7

- Select the line and from "Goto" Menu path click on "Variant".



- The process chain name is displayed in the output screen.



How to add Process chain in RSPCM?

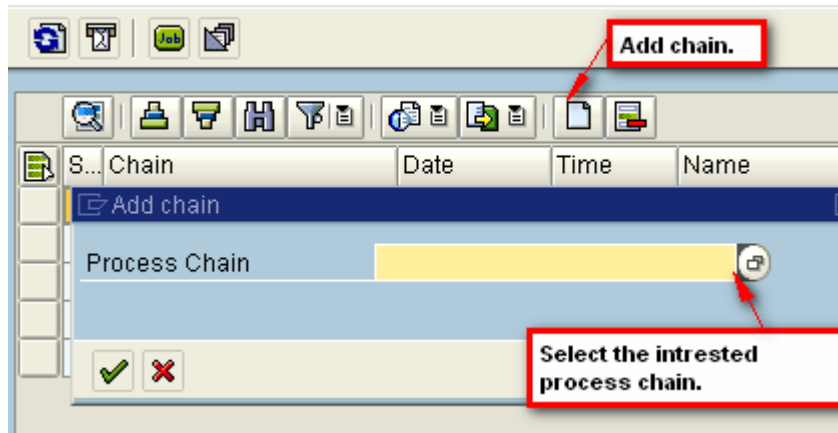
The RSPCM “Monitor Daily Process chain” is the central environment where we could monitor all the interested process chain.

A single window monitoring for all the interested process chain.

The below steps explains the procedure to add the Process chain into the “Monitor Daily Process chain” (RSPCM).

- Go to Transaction code “RSPCM”
- Click on “Add chain” button from Application tool bar and add the interested process chain.

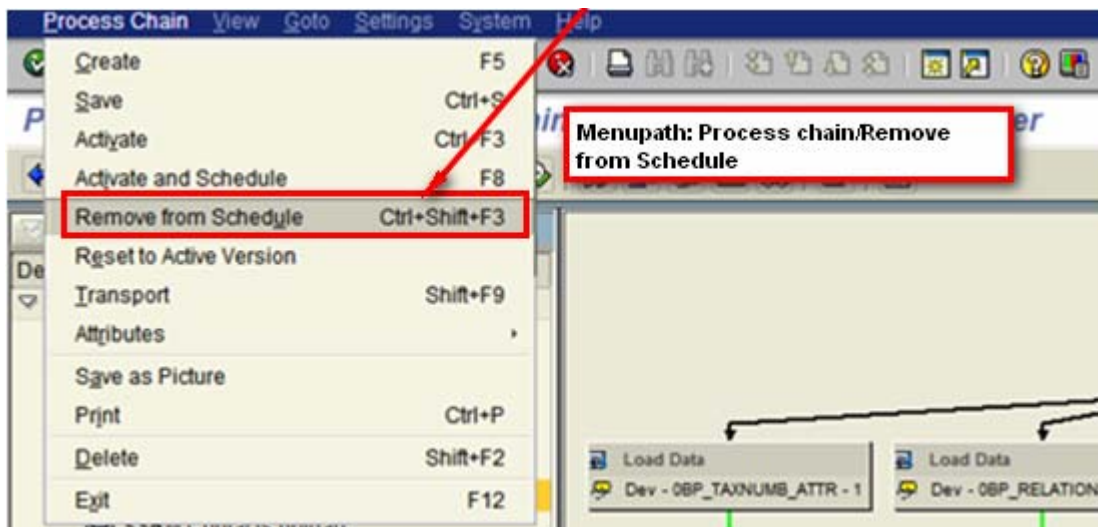
Monitor daily process chains



How to remove Process chain from schedule?

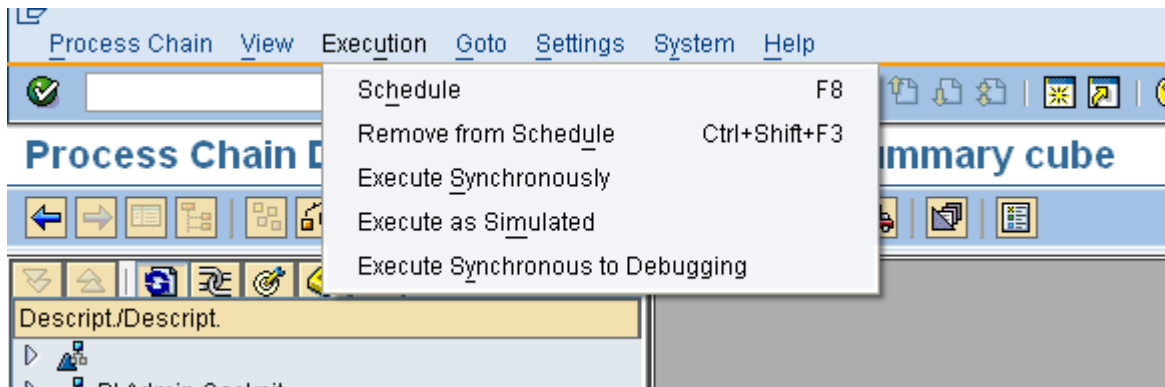
The below steps explains the procedure to remove the (already scheduled) Process chain from the Schedule.

- Select the interested Process Chain from transaction code RSPC.
- For SAP BW 3.x, Go to Menupath “Process Chain” and select “Remove from Schedule”.



SAP BW 3.x

- For SAP BI 7.0, From the Menupath “Execution” click on “Remove from Schedule”.



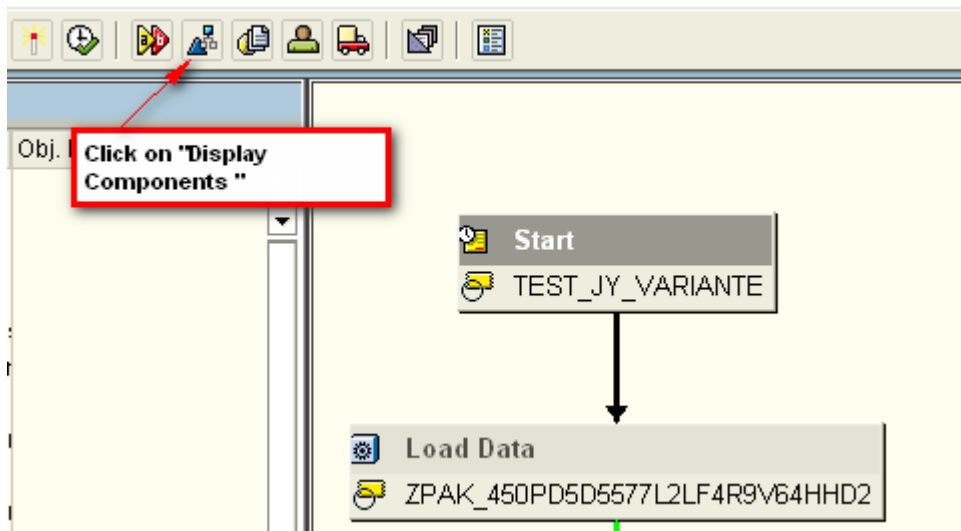
SAP BI 7.0

How to move the Process chain from one directory (Display Grouping) to another?

The below steps explains the procedure to move the Process chain from one Display Group to another.

- Select the interested Process Chain from transaction code RSPC.
- Click on "Display Components"

Planning View TEST_COPY1



- Select Desired Directory/Display Grouping.

Finance Planning View TEST_COPY1

Start
TEST_JY_VARIANTE

Load Data
ZPAK_450PD5D5577L2LF4R9V64HHD2

Assign Display Grouping
TEST_PC
Tests process chains

Select Desired "Display Grouping".

Tests process chains	PC_TEST_REP_AGENT	PC_TEST_REP_AGENT	ZPAK_4
	TEST_COPY1	TEST_COPY	With Su

- Thus process chain into the allocated "Display Group"

How to find the Parent Meta chain of the Process chain with "Start Using Meta Chain or API" selection?

The below steps explains the procedure to find the Parent Meta chain from the Child Process chain (with "Start Using Meta Chain or API" selection).

Table "RSPCCHAIN" is used to find the Meta chain.

- Go to table "RSPCCHAIN" .
- Provide the Process chain name in the selection field "Process chain".
- In result the Meta chain name is displayed.

Table: RSPCCHAIN
 Displayed fields: 9 of 19 Fixed columns: 5 List width 0250

Process Chain	Version	Process Type	Process Variants
TEST_JY	A	DROPINDEX	ZPAK_454C4JF5TXR4TPS4LC3ZJBUHY
TEST_JY	A	INDEX	ZPAK_454C4JF5TXR4TPS4LC3ZJBUHY
TEST_JY	A	LOADING	ZPAK_450PD5D5577L2LF4R9V64HHD2
TEST_JY	A	LOADING	ZPAK_4540AM6HZITDU7D6NJB60J9D2
TEST_JY	A	TRIGGER	TEST_JY_VARIANTE

Related Content

http://help.sap.com/saphelp_nw04/Helpdata/EN/6e/192756029db54192427cf6853c77a7/content.htm

http://help.sap.com/saphelp_nw04/helpdata/EN/8f/c08b3baaa59649e10000000a11402f/content.htm

<http://www.sdn.sap.com/irj/scn/index?rid=/library/uuid/b0afcd90-0201-0010-b297-9184845346ca>

For more information, visit the [Business Intelligence homepage](#).

Disclaimer and Liability Notice

This document may discuss sample coding or other information that does not include SAP official interfaces and therefore is not supported by SAP. Changes made based on this information are not supported and can be overwritten during an upgrade.

SAP will not be held liable for any damages caused by using or misusing the information, code or methods suggested in this document, and anyone using these methods does so at his/her own risk.

SAP offers no guarantees and assumes no responsibility or liability of any type with respect to the content of this technical article or code sample, including any liability resulting from incompatibility between the content within this document and the materials and services offered by SAP. You agree that you will not hold, or seek to hold, SAP responsible or liable with respect to the content of this document.