

Overview

Introduction to SAP NetWeaver Business Rules Management





On completing this presentation, you will be able to :

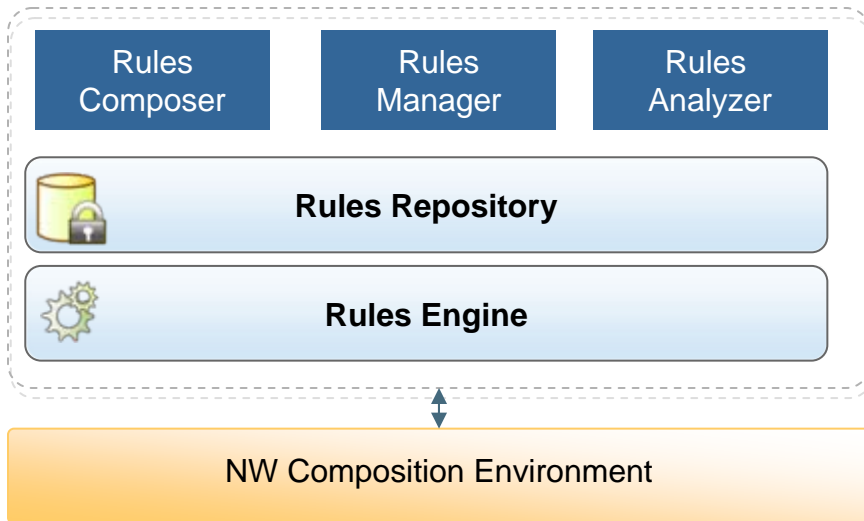
- Identify the technical building blocks of SAP NetWeaver Business Rules Management
- Identify how SAP NetWeaver BRM and SAP NetWeaver BPM play together
- Identify the value proposition of SAP NetWeaver BRM
- Explain the roadmap details of SAP NetWeaver BRM
- Identify technical usage scenarios overview
- Identify how to use rules in composite business processes



What is SAP NetWeaver Business Rules Management

- SAP NetWeaver Business Rules Management - Building Blocks
- BRM & BPM – How do they Play?
- Value Proposition of Business Rules Management
- Roadmap Highlights for Business Rules Management
- Technical Usage Scenarios
- How to Use Rules in Composite Business Processes

SAP NetWeaver Business Rules Management - Building Blocks



Rules Modeling & Implementation

- Business user-friendly rich rule formats
- Support for multiple data models for rules implementation
- Data model independent business vocabularies

Rule Testing & Refinement

- Rules validation, testing & refinement
- Optimization, simulation, 'What If's' and analysis

Rule Execution

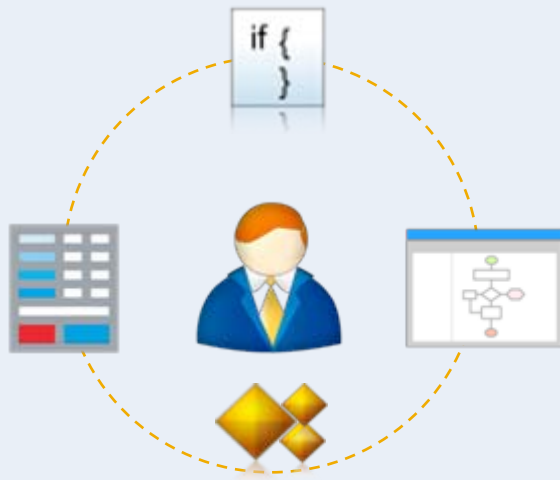
- High performance rules engine
- Integrated administration, monitoring & justification

End-to-End Change Management

- Business user rules management interface
- Rules versioning & repository services
- Permissions, access control & governance

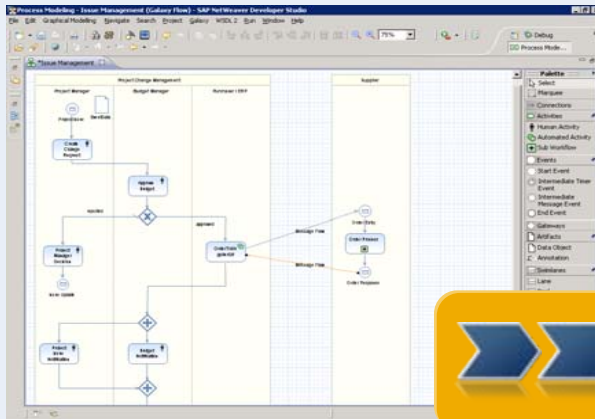
The screenshot shows the SAP NetWeaver Developer Studio interface for the Rules Composer. The window title is 'Rules Composer - demo.sap.com/~loan_emi:EMI Calculation - SAP NetWeaver Developer Studio'. The main area displays a table for 'EMI Calculation' with columns for 'ResidentType', 'Local Resident', and 'Non Local Resident'. The table is organized into sections based on 'Principal Loan Amount' and 'Loan Period'.

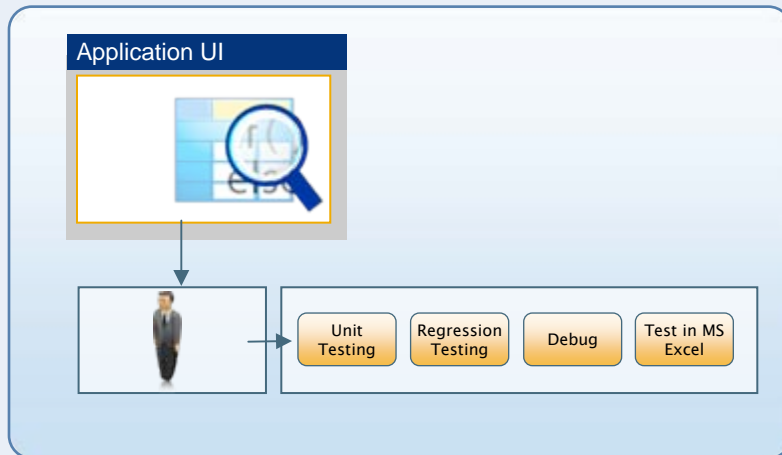
Principal Loan Amount	Loan Period	Local Resident int rate	Non Local Resident int rate
< 15000	1	10.75	11.75
	2	10.50	11.50
	3	10.25	11.25
	4	10.00	11.00
	5	09.75	10.75
Between 15000 and 50000	1	10.50	11.50
	2	10.25	11.25
	3	10.00	11.00
	4	09.75	10.75
	5	09.50	10.50
Between 50000 and 150000	1	10.25	11.25
	2	10.00	11.00
	3	09.75	10.75
	4	09.50	10.50
	5	09.25	10.25
Between 150000 and 500000	1	10.25	11.25
	2	10.00	11.00
	3	09.75	10.75
	4	09.50	10.50



Rules Modeling

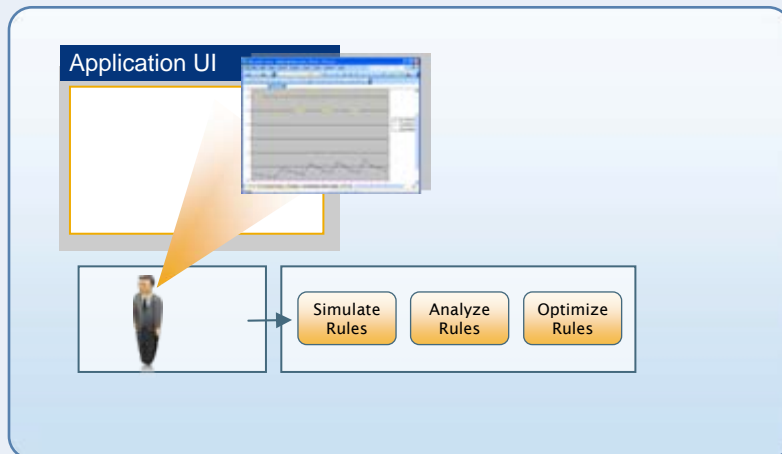
- Business rules modeling for Business Analysts
- Rich business user-friendly rules formats
- Natural language-like rules representations
- Support for multiple data models for rules implementations
- Resolve conflicts & identify inadequacies
- Seamless navigation from process to rules through integrated process & rules modeling

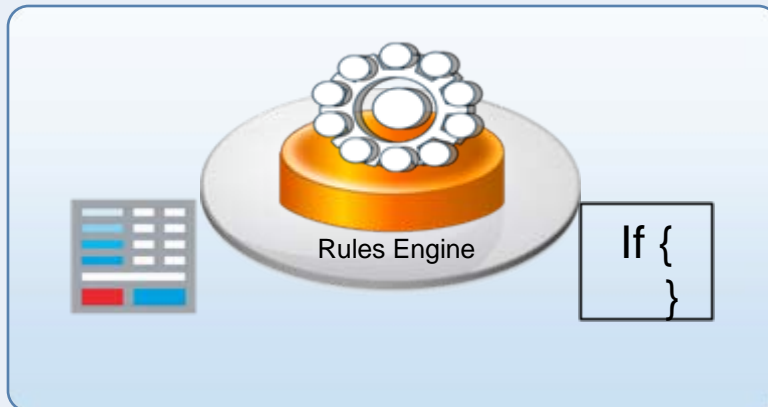




Rules Refinement and Alignment

- Business rules testing for Business Analysts
- Business rules refinement and validation throughout rules lifecycle
- Business rules analysis towards optimization and alignment
- Integrated process & rules analytics



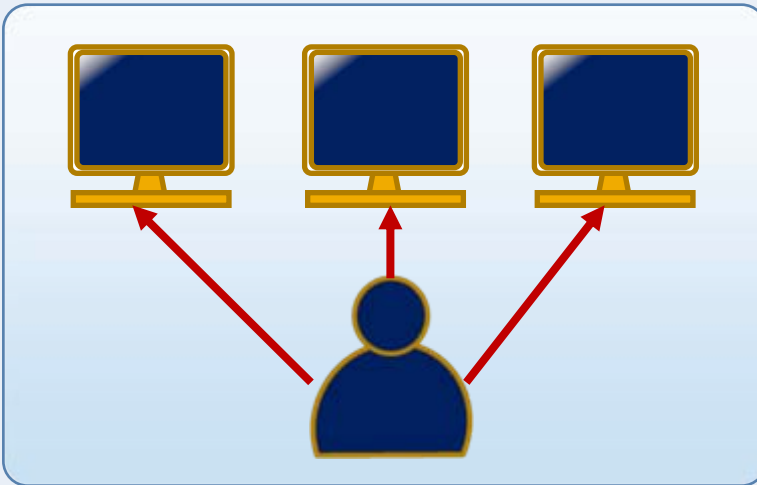


Rules Execution

- Dedicated inference & sequential engines
- Out-of-the-box support for rules consumption by
 - Composite applications & business processes
 - ABAP Business Applications

Rules Monitoring & Control

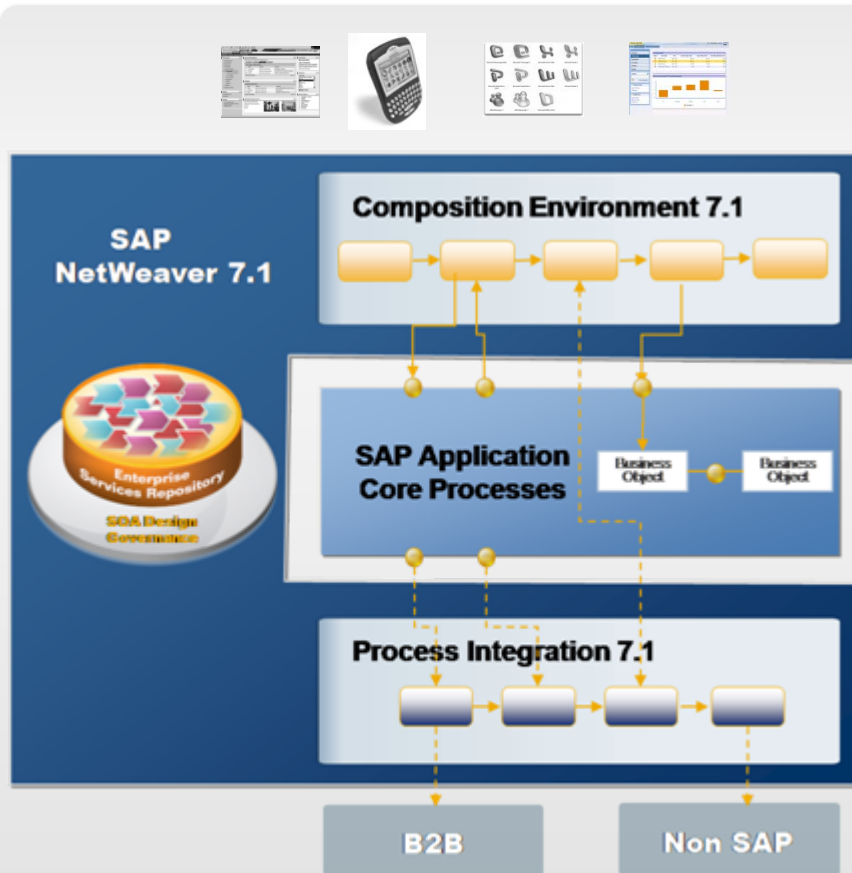
- SAP NetWeaver Administrator integrated rules engine administration
- Decision Justification & rule execution logging





Rules Change Management

- Web based collaborative business user interface
- Protected access to business rules
- Change approval mechanisms
- Runtime & design time repository services
- Business rules reports & rules traceability services



Rules accelerates BPM

- Clear decoupling of process logic from decision logic
- Accelerated process efficiency with automated decisioning
- Reusable business rules services
- Rules based correlations for real-time business events

End-to-End Rules Consumption

- By composite applications
 - ✓ Business process composites
 - ✓ Service & event composites
 - ✓ UIs & situational composites
- By system-to-system processes
- By human-centric processes
- By ABAP business applications

Consider common business process in Manufacturing & Automotive industries, for example '*warranty claims processing*'.

Company X

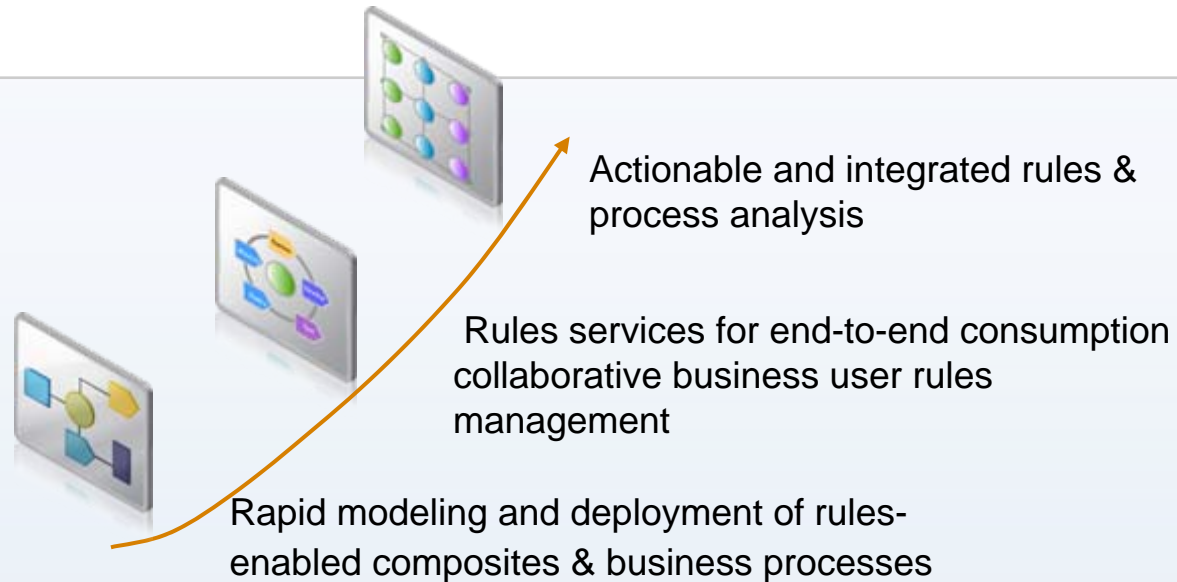
- Has been working with a network of dealers to get their products to the market.
- Has partnered with a whole lot of suppliers where contracts have varied by supplier
- Company products vary by type and number
- Warranty claims can flow from Customer-Dealer-Manufacturer-Supplier



- Warranty claims processing, validation, review are all manual and “prone” to error activities. In some cases, the whole process can take up to 6-8 weeks.
- Warranty policies and contracts are typically not strictly enforced. This in turn can lead to fraudulent claims, incorrect billing and excessive payments.
- When a supplier’s contract changes, these changes may not flow back into the system immediately leading to incorrect billing.
- Multiple departments (IT, Inventory, Purchase, Recovery) involved may not have the same “visibility” into the system, or may even use different systems. This can cause delays in payments for approved claims.
- Mistakes in separating company’s warranty responsibilities from those of suppliers or distributors, result in covering costs pertaining to others.

- BRM enables automation of operational policy decisions in an agile precise, consistent, compliant and auditable fashion
- BRM enables automation of critical guidelines and policy driven decisions in a transparent and agile fashion.
- BRM is an effective solution for similar business scenarios, where a large scale of human and automated activities have to be performed

VALUE CURVE



Delivering Value Across the Business Process Platform

- Precise and informed decision automation
- Flexible IT Systems
- Improved Visibility for the Business
- Knowledge Centralization

Faster turnaround times

- Rules are externalized from application code
- Users can change them faster than if they were locked up in code
- Reduced Time & Cost for Testing and Change

Accurate and precise decision automation

- Precise and informed decisions are driven by rules that users know are correct
- Consistent and unambiguous application of business rules across all enterprise systems

Improved visibility for business users

- Business rules are visible and understandable to the LoB
- Business users can own and influence automated decisions

SAP NetWeaver Business Rules Management – Roadmap Highlights



Rules Composition

Rules Management

Advanced BRM

Integrated Composition Experience

SAP NetWeaver Composition Environment (CE) delivers Business Rules Composition

Integrated Business Rules Modeling for pure composite applications and composite business processes

Support complex business decision sequences modeling like 'under-writing', etc.

Integrated support for refinement and validation of business rules

Future Releases

Rule based responses to business events in real-time business scenarios like fraud detection, SLA monitoring.

End-to-end Business Rules Support

Rules made available across the application stack from the Composition Environment extending to the ABAP Business Applications

End-to-End rules change management

Informed decision automation and justification capabilities

Advanced rules analysis capabilities towards alignment with business goals through simulations and replays

Business Efficiency

Automate critical rule based decisions involving compliance & regulations, pricing, etc.

Enable business user participation and collaboration towards rules authoring and tactical change management

Advanced BRM capabilities
Business rules modeling for Business Analysts

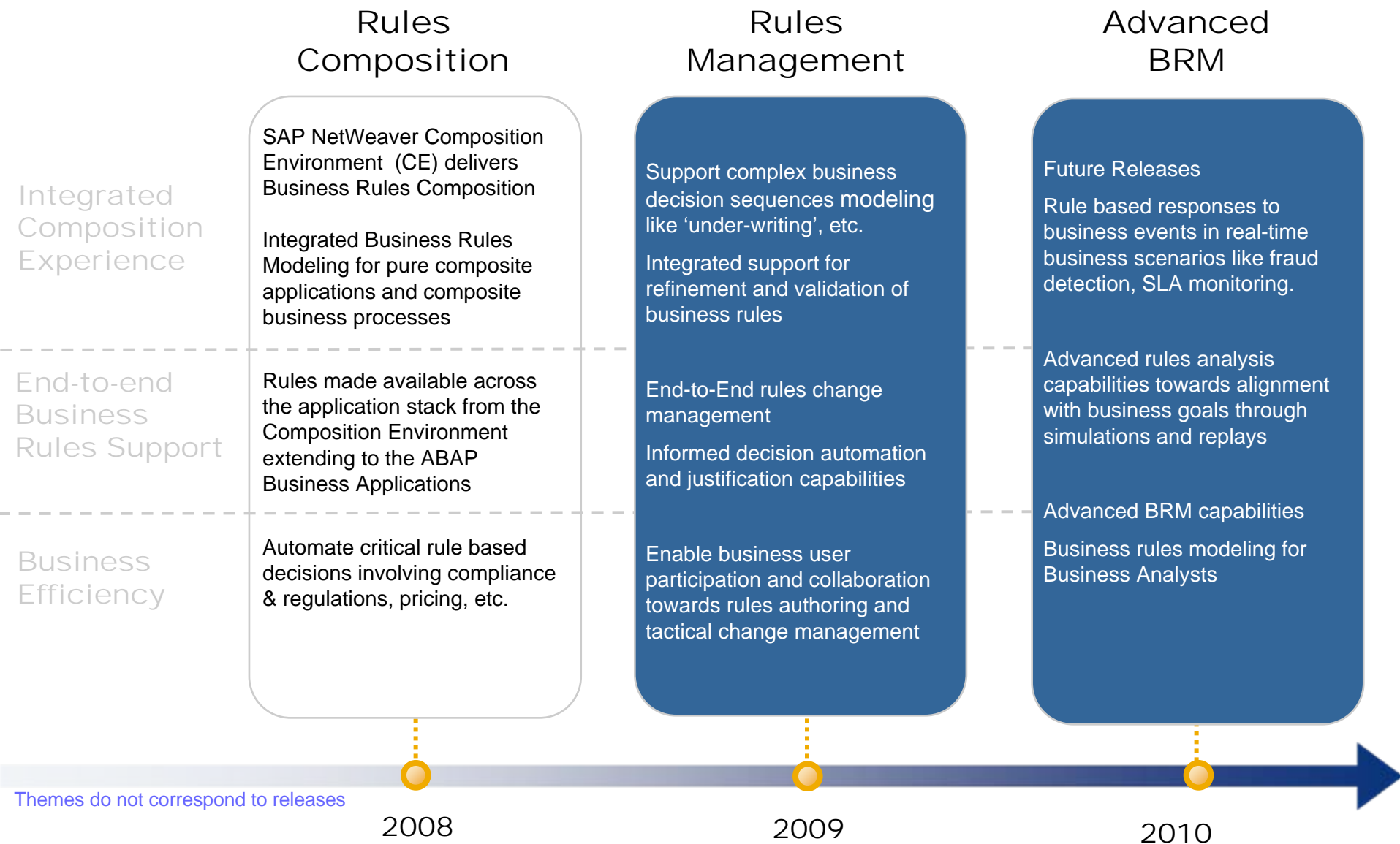
Themes do not correspond to releases

2008

2009

2010

SAP NetWeaver Business Rules Management – Roadmap Highlights



Themes do not correspond to releases



Rules Modeling

Independent Rules Modeling

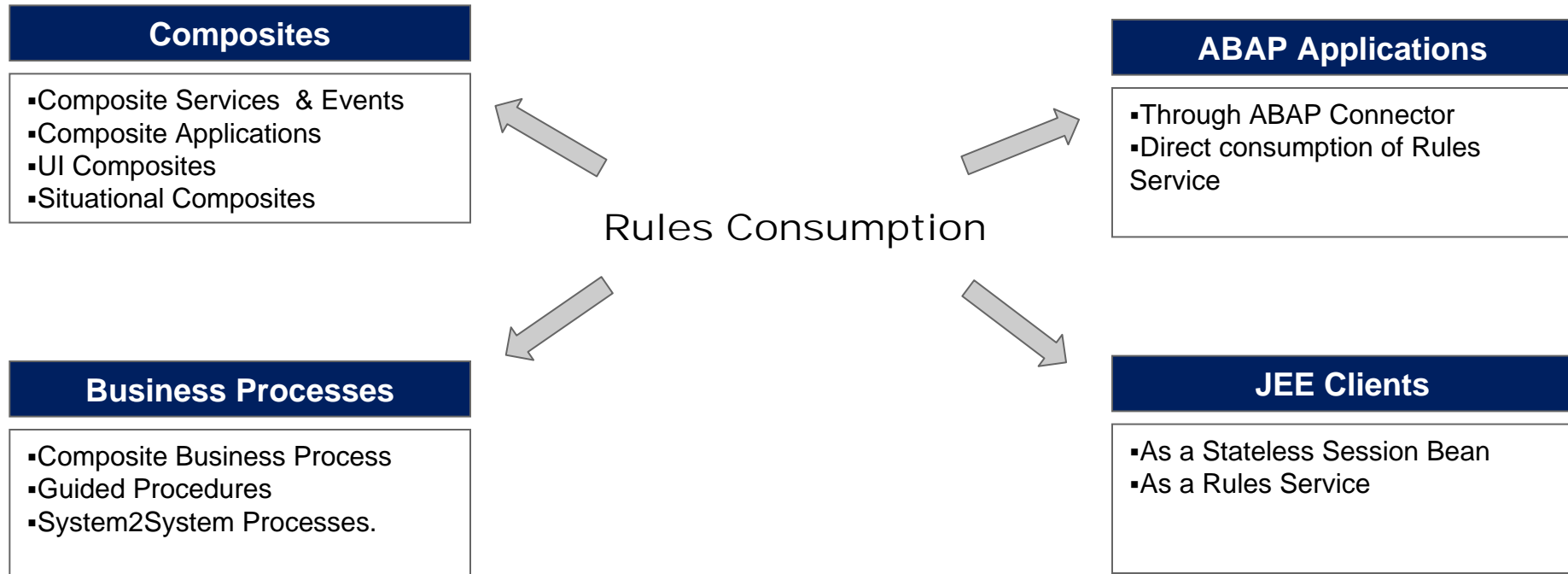


- Model in Rules Composer
- Wider Consumption across Applications

Integrated Rules & Process Modeling



- Model in Process Composer
- For Consumption By a Business Process



Using Business Rules with a Composite Business Process

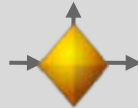


Process
Composer

Process
Desk



Process Server

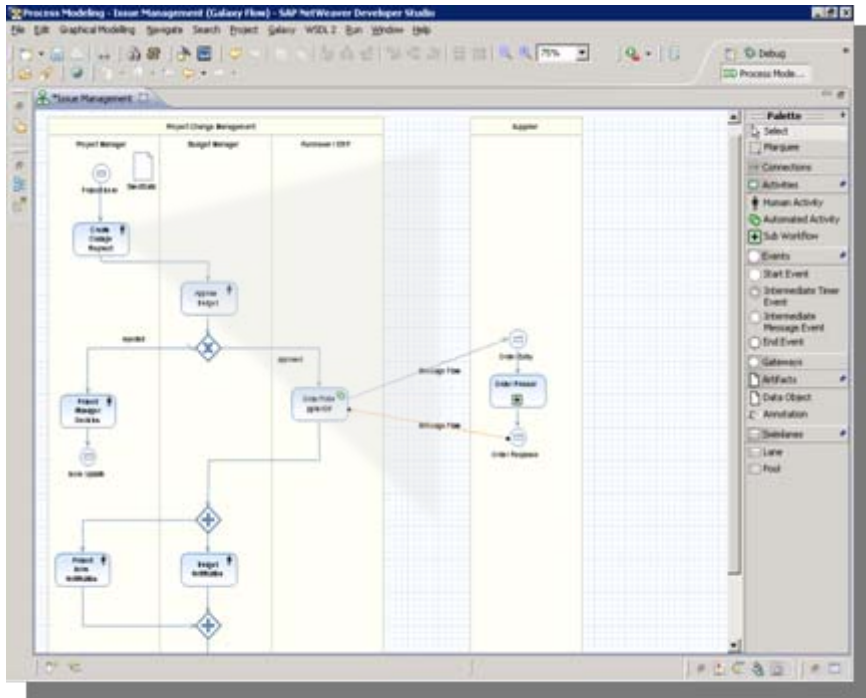


Many Ways to Model Rules

- Model Rules in the Context of a Business Process using the Process Composer
- Model rules as an independent rules project using the Rules Composer

And, Many Ways to Integrate

- Use Rules through an Automated Activity
- Model Functions driven by Business Rules
 - Use rules based Mapping Transformations in a process
 - Use rules based functions in Gateways





No part of this publication may be reproduced or transmitted in any form or for any purpose without the express permission of SAP AG. The information contained herein may be changed without prior notice.

Some software products marketed by SAP AG and its distributors contain proprietary software components of other software vendors.

SAP, R/3, mySAP, mySAP.com, xApps, xApp, SAP NetWeaver, Duet, Business ByDesign, ByDesign, PartnerEdge and other SAP products and services mentioned herein as well as their respective logos are trademarks or registered trademarks of SAP AG in Germany and in several other countries all over the world. All other product and service names mentioned and associated logos displayed are the trademarks of their respective companies. Data contained in this document serves informational purposes only. National product specifications may vary.

The information in this document is proprietary to SAP. This document is a preliminary version and not subject to your license agreement or any other agreement with SAP. This document contains only intended strategies, developments, and functionalities of the SAP® product and is not intended to be binding upon SAP to any particular course of business, product strategy, and/or development. SAP assumes no responsibility for errors or omissions in this document. SAP does not warrant the accuracy or completeness of the information, text, graphics, links, or other items contained within this material. This document is provided without a warranty of any kind, either express or implied, including but not limited to the implied warranties of merchantability, fitness for a particular purpose, or non-infringement.

SAP shall have no liability for damages of any kind including without limitation direct, special, indirect, or consequential damages that may result from the use of these materials. This limitation shall not apply in cases of intent or gross negligence.

The statutory liability for personal injury and defective products is not affected. SAP has no control over the information that you may access through the use of hot links contained in these materials and does not endorse your use of third-party Web pages nor provide any warranty whatsoever relating to third-party Web pages

Weitergabe und Vervielfältigung dieser Publikation oder von Teilen daraus sind, zu welchem Zweck und in welcher Form auch immer, ohne die ausdrückliche schriftliche Genehmigung durch SAP AG nicht gestattet. In dieser Publikation enthaltene Informationen können ohne vorherige Ankündigung geändert werden.

Einige von der SAP AG und deren Vertriebspartnern vertriebene Softwareprodukte können Softwarekomponenten umfassen, die Eigentum anderer Softwarehersteller sind.

SAP, R/3, mySAP, mySAP.com, xApps, xApp, SAP NetWeaver, Duet, Business ByDesign, ByDesign, PartnerEdge und andere in diesem Dokument erwähnte SAP-Produkte und Services sowie die dazugehörigen Logos sind Marken oder eingetragene Marken der SAP AG in Deutschland und in mehreren anderen Ländern weltweit. Alle anderen in diesem Dokument erwähnten Namen von Produkten und Services sowie die damit verbundenen Firmenlogos sind Marken der jeweiligen Unternehmen. Die Angaben im Text sind unverbindlich und dienen lediglich zu Informationszwecken. Produkte können länderspezifische Unterschiede aufweisen.

Die in diesem Dokument enthaltenen Informationen sind Eigentum von SAP. Dieses Dokument ist eine Vorabversion und unterliegt nicht Ihrer Lizenzvereinbarung oder einer anderen Vereinbarung mit SAP. Dieses Dokument enthält nur vorgesehene Strategien, Entwicklungen und Funktionen des SAP®-Produkts und ist für SAP nicht bindend, einen bestimmten Geschäftsweg, eine Produktstrategie bzw. -entwicklung einzuschlagen. SAP übernimmt keine Verantwortung für Fehler oder Auslassungen in diesen Materialien. SAP garantiert nicht die Richtigkeit oder Vollständigkeit der Informationen, Texte, Grafiken, Links oder anderer in diesen Materialien enthaltenen Elemente. Diese Publikation wird ohne jegliche Gewähr, weder ausdrücklich noch stillschweigend, bereitgestellt. Dies gilt u. a., aber nicht ausschließlich, hinsichtlich der Gewährleistung der Marktgängigkeit und der Eignung für einen bestimmten Zweck sowie für die Gewährleistung der Nichtverletzung geltenden Rechts.

SAP übernimmt keine Haftung für Schäden jeglicher Art, einschließlich und ohne Einschränkung für direkte, spezielle, indirekte oder Folgeschäden im Zusammenhang mit der Verwendung dieser Unterlagen. Diese Einschränkung gilt nicht bei Vorsatz oder grober Fahrlässigkeit.

Die gesetzliche Haftung bei Personenschäden oder die Produkthaftung bleibt unberührt. Die Informationen, auf die Sie möglicherweise über die in diesem Material enthaltenen Hotlinks zugreifen, unterliegen nicht dem Einfluss von SAP, und SAP unterstützt nicht die Nutzung von Internetseiten Dritter durch Sie und gibt keinerlei Gewährleistungen oder Zusagen über Internetseiten Dritter ab.

Alle Rechte vorbehalten.