

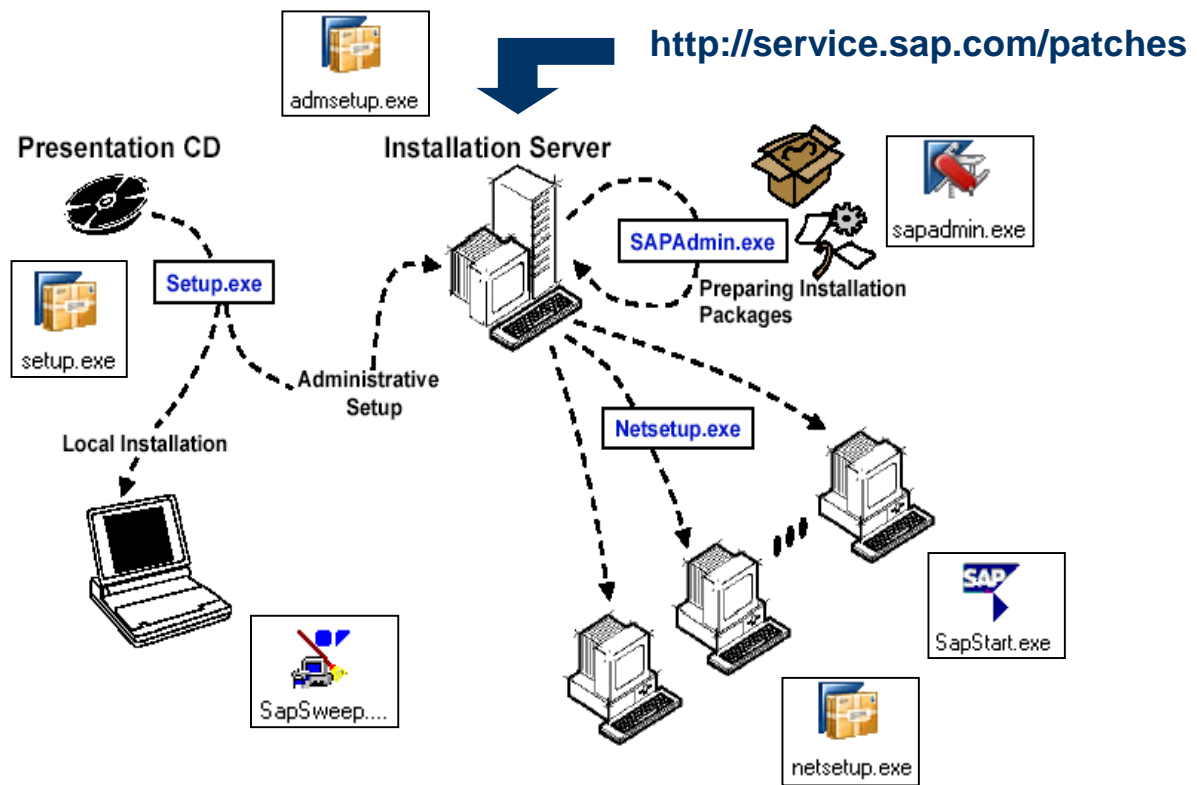
WDEBU7 RKT Workshop Chapter 07

Frontend Netweaver 7.0

Roland Kramer, Platform Advisor, Office of the CTO EMEA
Version 04.07.2008



Installing an SAP Front-End Server



© SAP AG 2007, Frontend NetWeaver 7.0, Roland Kramer / 2

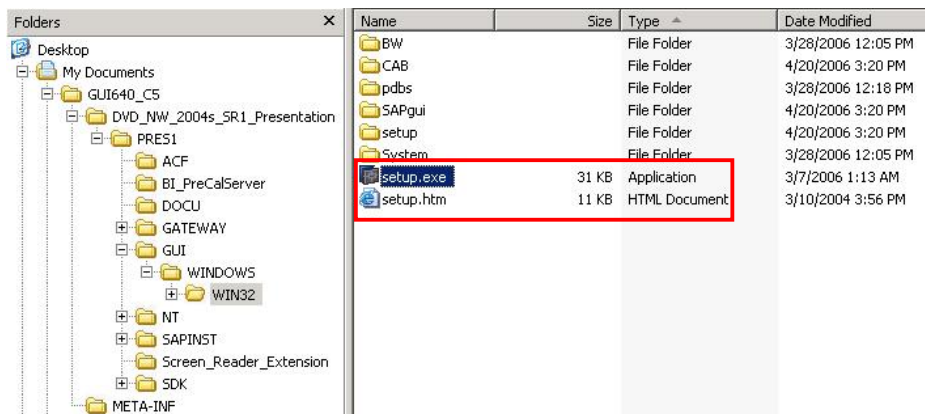
THE BEST-RUN BUSINESSES RUN SAP



- Note 507667 - SAP logon control and SAPLOGON_INI_FILE environment variable
- You will find the programs on the Installation CD/DVD under `<DRIVE>:\PRES_640C5_1\GUIWINDOWS\WIN32\setup`
- The expression “SAP front-end server” only indicates a share on any File server or for testing purposes on any PC. If you plan to distribute a high load of front-end’s you can also use the load balancing service from the SAP front-end server.
- The Usage of the following programs:
 - ◆ **admsetup.exe:** With this program you install the Content for the front-end CD/DVD to you prepared share on your front-end server. Later in the setup you have to configure the distribution service for the SAP front-end server.
 - ◆ **sapadmin.exe:** This program is used when you create your own Installation Packages, e.g. when you plan to extend the Package for SEM and R/3 Development Add-On’s. From the Menu you reach also the “patch apply” and the front-end server Monitor, which gives you an Overview about the Installed patches, Log files, Errors, etc.
 - ◆ **netsetup.exe:** This program will be called by the User from the front-end PC’s. The User only needs access to the program and not to the whole File share. Due the Advance of the distributions service the End user doesn’t need any Administrator rights on his PC.
 - ◆ **sapsweep.exe:** This is the Deletion program for any SAP front-end and it is self explaining. Be careful on a PC which also contains a front-end server. Everything will be removed by the program.

Select setup.exe to start Frontend Installation

- Download the latest Version of the SAP GUI 6.40 (Compilation 5) or higher (GUI 7.10 Compilation 1) from <http://service.sap.com/swdc>
→ Installations → Frontend → GUI
- Note 889314 - Using the BI Add-On for SAP NW 7.0
- Note 877774 - Pre-requisite for BI 7.0 Frontend (.net Framework 1.1)
- Note 1013139 - Pre-requisite for BI 7.x Frontend (.net Framework >= 2.0)
- Note 1040856 - Business Explorer 3.X on Windows Vista / Excel 2007
- Note 1071338 - Report Designer: Activate Default Theme 0TRADESHOW



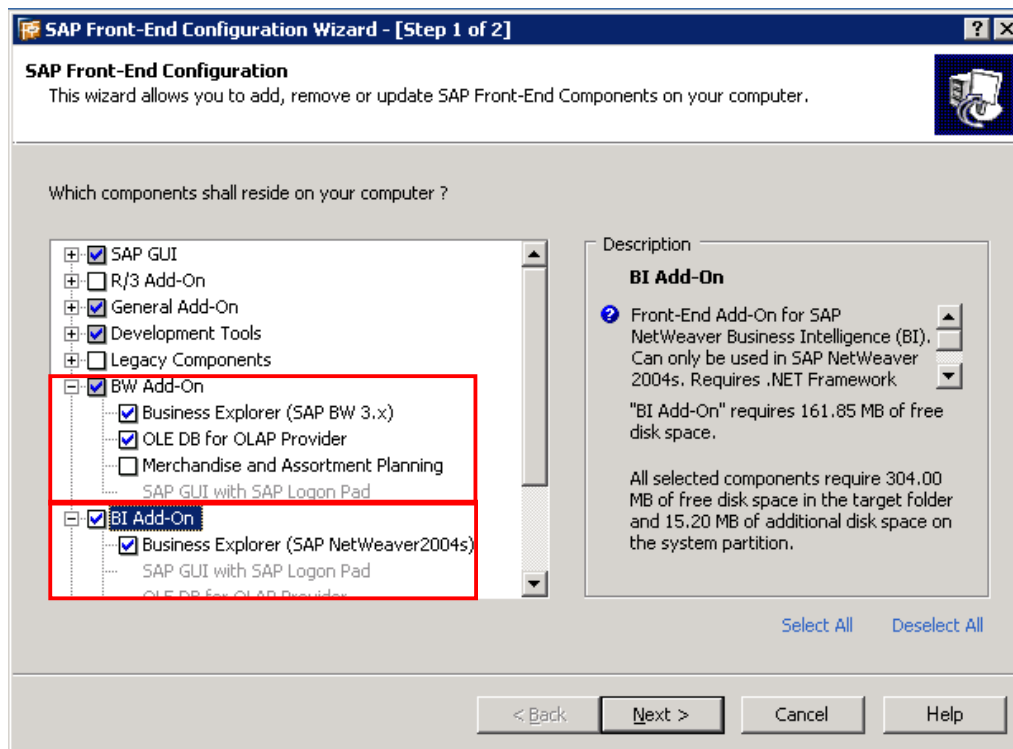
© SAP AG 2007, Frontend NetWeaver 7.0, Roland Kramer / 3

THE BEST-RUN BUSINESSES RUN SAP



- After you have done the technical upgrade to BI in NetWeaver BI 7.0, you can continue using the 3.5 BEx tools on top of your upgraded BI system. You can also continue using the ABAP based runtime. You can even run both runtimes as well as both the NetWeaver BI 7.0 BEx and 3.5 BEx tools in parallel.
- For more information, see the FAQs below as well as the NetWeaver BI 7.0 Release Notes, Master guide and documentation.
- The BEx Browser is on maintenance. There are no new features developed and the tool is phased out. You can still use it in NetWeaver BI 7.0 for queries, templates and workbooks developed with the 3.x BEx Tools and for queries, templates and workbooks developed with the new NetWeaver BI 7.0 BEx Tools. However it is not recommended. SAP recommends using the Portal infrastructure of NetWeaver as a user- and role-specific single point of entry for BI users.
- **Which versions of Microsoft Office are supported by SAP NetWeaver 7.0 BI Business Explorer (BEx)?**
- BEx in SAP NetWeaver BI 7.0 supports Excel 2002 SP2, Office XP (2003) SP2 and higher. There is no support for MS Office 97 or MS Office 2000.
- Note 507667 - SAP logon control and SAPLOGON_INI_FILE environment variable
- Note 893348 - Hardware and Software requirement for NetWeaver 7.0

Select BW Add-On and BI Add-on with setup.exe



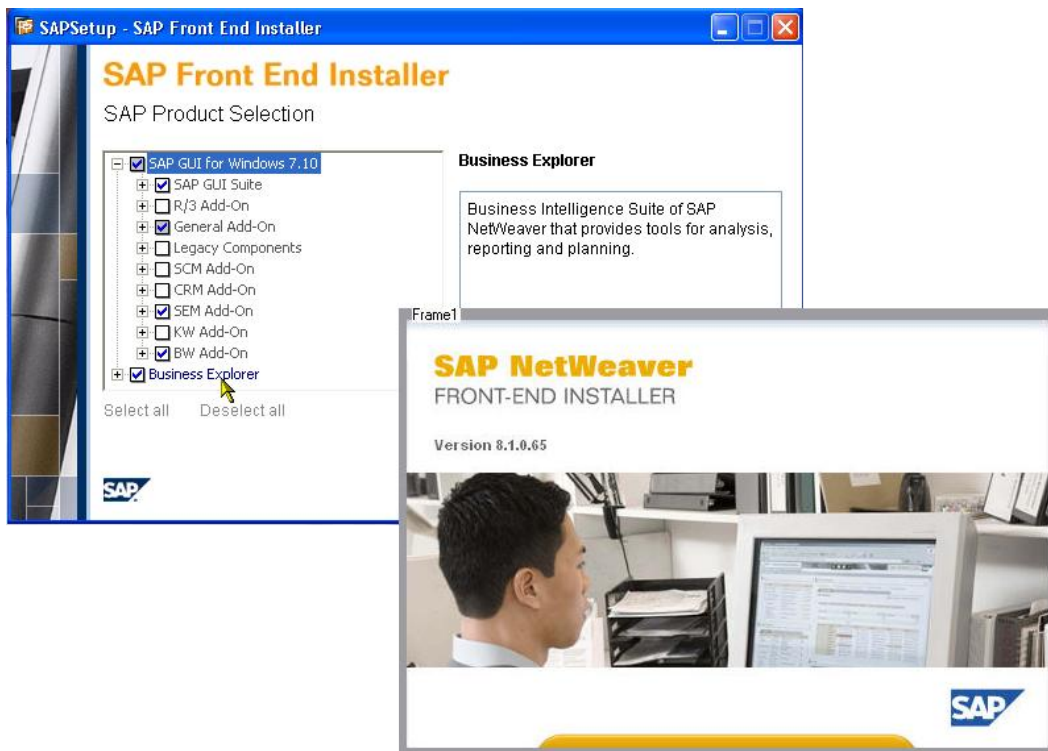
© SAP AG 2007, Frontend NetWeaver 7.0, Roland Kramer / 4

THE BEST-RUN BUSINESSES RUN SAP



- The BI 7.0 frontend requires Microsoft.NET Framework 1.1 in it's newest version, which means that all service packs and hotfixes for Microsoft .NET Framework 1.1 have to be applied.
- The installation of Microsoft .NET Framework 1.1 can be found here:
- <http://www.microsoft.com/downloads/details.aspx?FamilyID=262d25e3-f589-4842-8157-034d1e7cf3a3>
- The Service Pack 1 of the Microsoft .NET Framework 1.1 also needs to be installed, it can be found here:
- <http://www.microsoft.com/downloads/details.aspx?familyid=A8F5654F-088E-40B2-BBDB-A83353618B38>
- It is recommended to run the Windows Update functionality on a PC that has the Microsoft .NET Framework 1.1 installed, before the BI frontend installation is started. This should automatically update the relevant components.
- Afterwards, at least an entry like the following should be in the "Installed Programs" list (Control Panel -> Add or Remove Software):
- "Microsoft .Net Framework 1.1 Hotfix (KB886903)"

New with SAP Frontend 7.10



© SAP AG 2007, Frontend NetWeaver 7.0, Roland Kramer / 5

THE BEST-RUN BUSINESSES RUN SAP



- Currently the release of BI-AddOn (BI 7.0) together with SAP GUI 7.10 and the new Windows Operating System Vista is planned together with the Release of Stack 12 NetWeaver 7.0.
- The Backwards Support with the BW-AddOn (BW 3.5) together with this combination is released.

Important Note

- **Support for SAP GUI for Windows 6.40 will end on 14th of October 2008. Please make sure to have upgraded to SAP GUI for Windows 7.10 before this date. There is no extended or customer individual support offered for SAP GUI for Windows 6.40.**

Maintenance periods for specific SAP GUI for Windows releases

7.10

Shipped on 5th of February 2007.

Supported until **March 31st, 2011**

6.40

Supported until October 14th, 2008

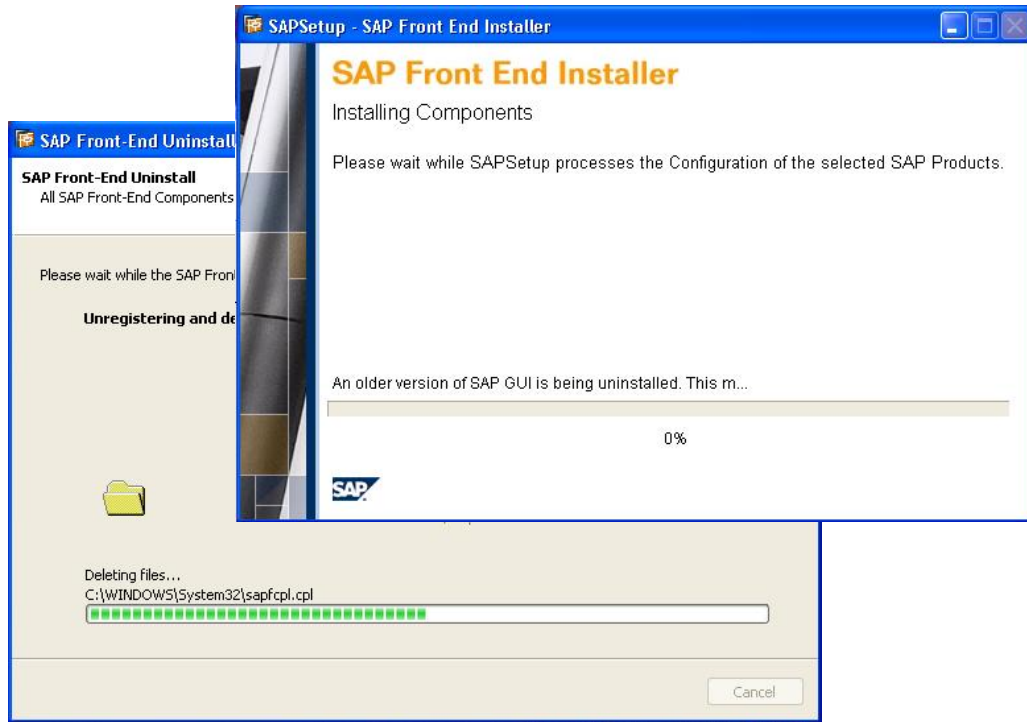
Please start your upgrade to SAP GUI for Windows 7.10 now.

6.20

Supported until 31st of December 2010.

Restricted support applies since 30th of September 2005. For more information have a look at SAP note 929300.

The old (6.40) Version will be deinstalled



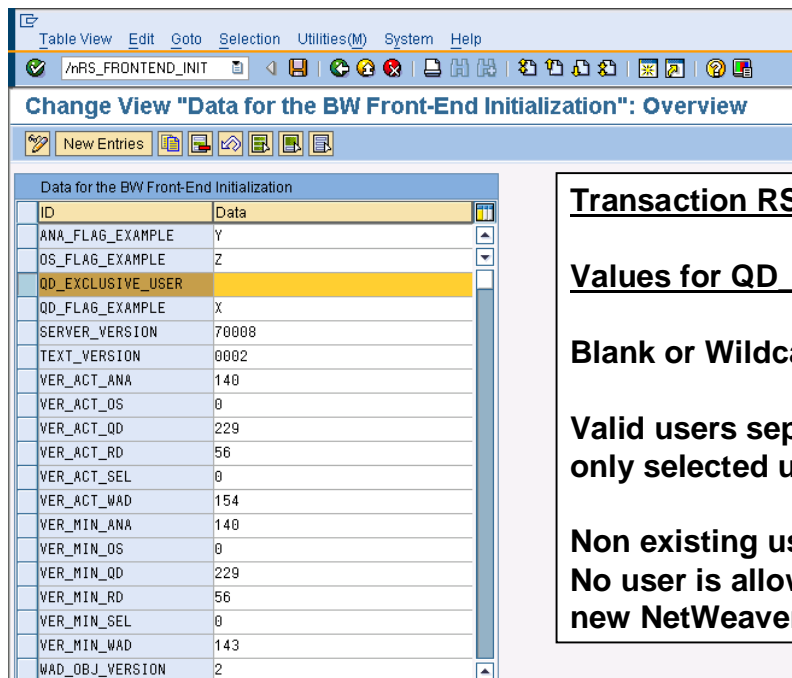
Both Versions are available



Version of tools for BW 3.x

Version of tools for NetWeaver 7.0 BI

Limit the access with the NetWeaver 7.0 Frontend



Change View "Data for the BW Front-End Initialization": Overview

ID	Data
ANA_FLAG_EXAMPLE	Y
OS_FLAG_EXAMPLE	Z
QD_EXCLUSIVE_USER	
QD_FLAG_EXAMPLE	X
SERVER_VERSION	70008
TEXT_VERSION	0002
VER_ACT_ANA	140
VER_ACT_OS	0
VER_ACT_QD	229
VER_ACT_RD	56
VER_ACT_SEL	0
VER_ACT_WAD	154
VER_MIN_ANA	140
VER_MIN_OS	0
VER_MIN_QD	229
VER_MIN_RD	56
VER_MIN_SEL	0
VER_MIN_WAD	143
WAD_OBJ_VERSION	2

Transaction RS FRONTEND_INIT

Values for QD_EXCLUSIVE_USER:

Blank or Wildcard *: all users allowed

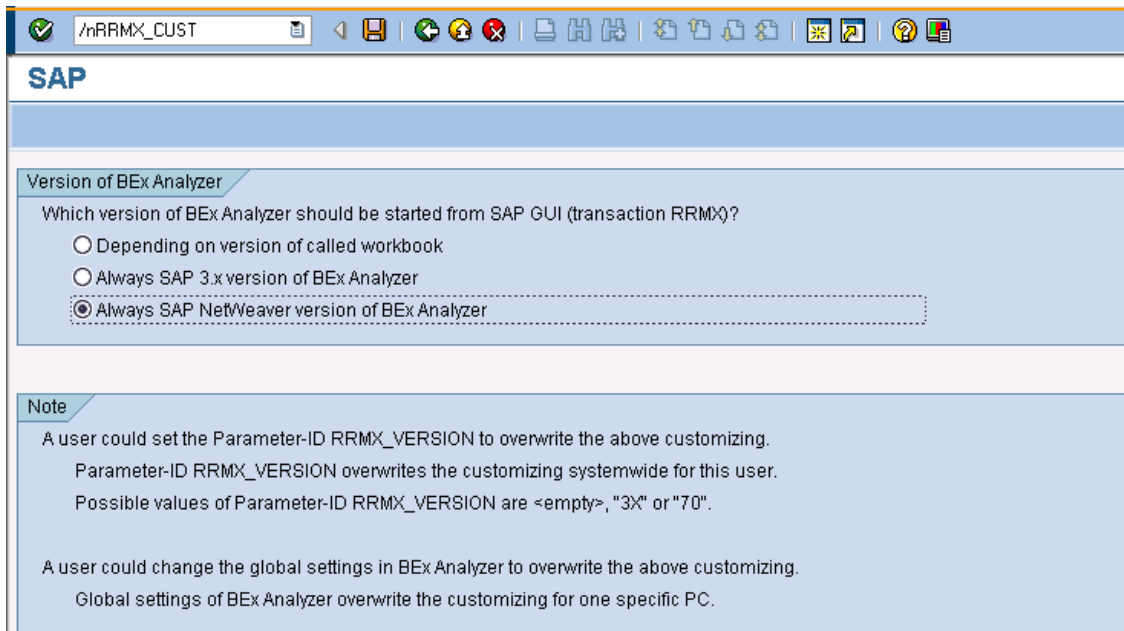
**Valid users separated with comma:
only selected users allowed**

**Non existing user (string):
No user is allowed to log on with the
new NetWeaver 7.0 BEx Query Designer**

Additional Notes to check:

- BI FAQ <http://service.sap.com/bifaq> => Frontend Migration
- Note 949330 - NetWeaver 7.0: Query backup & restore
- Note 962530 - How to restrict access to Query Designer 7.0

Note 970002 - Which BEx Analyzer version (SPS10)



The screenshot shows the SAP GUI interface for transaction RRMX_CUST. The title bar indicates the transaction name. Below the SAP logo, the main content area is titled 'Version of BEx Analyzer'. It contains a question: 'Which version of BEx Analyzer should be started from SAP GUI (transaction RRMX)?'. There are three radio button options: 'Depending on version of called workbook', 'Always SAP 3.x version of BEx Analyzer', and 'Always SAP NetWeaver version of BEx Analyzer'. The third option is selected. Below this, there is a 'Note' section with two paragraphs of text explaining how to override the customization using the parameter RRMX_VERSION.

Version of BEx Analyzer

Which version of BEx Analyzer should be started from SAP GUI (transaction RRMX)?

- Depending on version of called workbook
- Always SAP 3.x version of BEx Analyzer
- Always SAP NetWeaver version of BEx Analyzer

Note

A user could set the Parameter-ID RRMX_VERSION to overwrite the above customizing.
Parameter-ID RRMX_VERSION overwrites the customizing systemwide for this user.
Possible values of Parameter-ID RRMX_VERSION are <empty>, "3X" or "70".

A user could change the global settings in BEx Analyzer to overwrite the above customizing.
Global settings of BEx Analyzer overwrite the customizing for one specific PC.

- **With the Transaction RRMX_CUST you can specify how the existing BEx Analyzer is called via RRMX**

Check for the latest Frontend Patches 7.10

SAP GUI FOR WINDOWS 7.10 CORE

- [SAP GUI FOR WINDOWS 7.10 CORE](#)

Informationsseite

SAP GUI for Windows 7.10

This page contains important information regarding the download of patches for SAP GUI for Windows 7.10 and related components.

More information about SAP GUI for Windows 7.10 itself can be found [here](#).

In release 6.40 and earlier releases of SAP GUI for Windows all kinds of patches could be found in a single folder on SAP Service Marketplace. For technical reasons this had to be changed as of release 7.10. Now each kind of patch has an own folder on SAP Service Marketplace.

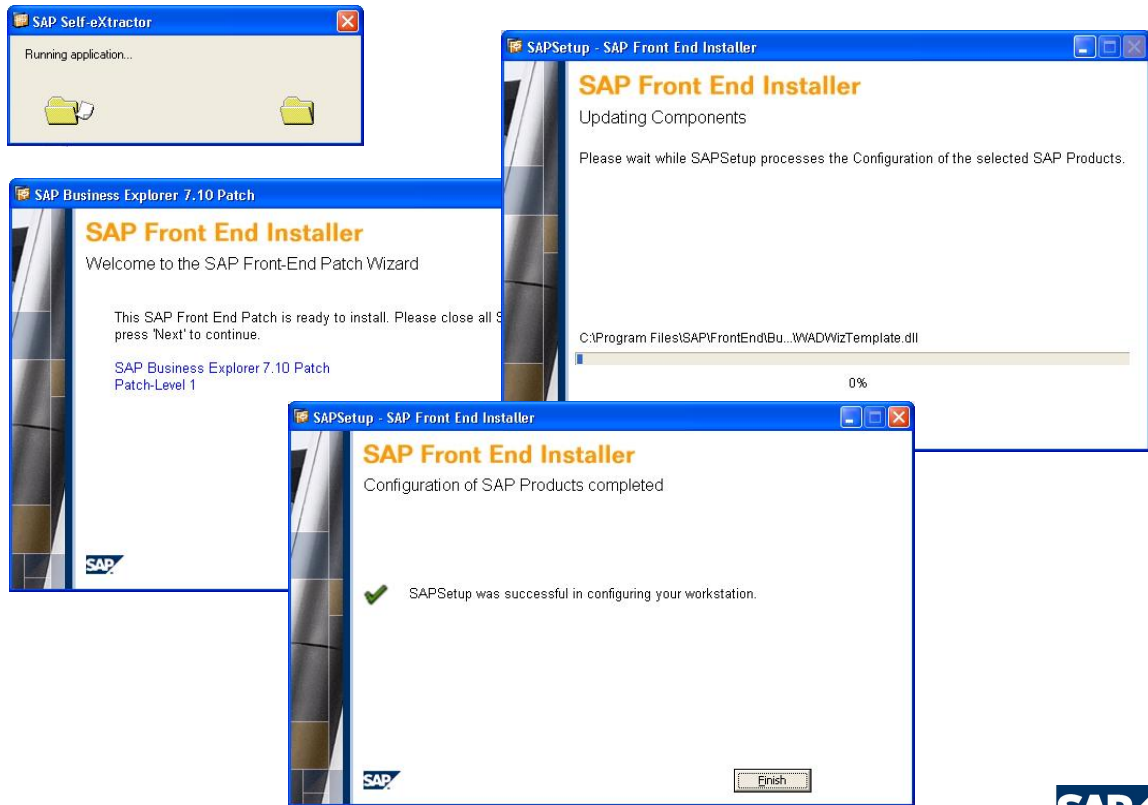
The following kinds of patches are available:

Name of the component	Content	Location on SAP Service Marketplace
SAP GUI for Windows 7.10 CORE	This patch contains corrections for the "core" components of SAP GUI, the SAP GUI installation and for the SCM and SEM frontend add-ons. In release 7.10 the appendix "CORE" was added to emphasize that only corrections for the core components of SAP GUI can be found in the corresponding folders on SAP Service Marketplace.	Use this link .
BW 3.5 ADDON FOR SAP GUI 7.10	This patch contains corrections for the frontend addon for SAP BW 3.5 integrated into SAP GUI for Windows 7.10.	Use this link .
BI 7.0 ADDON FOR SAP GUI 7.10	This patch contains corrections for the frontend addon for SAP BI 7.0 integrated into SAP GUI for Windows 7.10.	Use this link .
KW ADDON FOR SAP GUI 7.10	This patch contains corrections for the frontend addon for SAP Knowledge Warehouse integrated into SAP GUI for Windows 7.10.	Use this link .
SAPSPRINT 7.10	This patch contains SAPSPrint which is a tool for server-based printing on Windows (see SAP note 894444 for more information).	Use this link .
SAP Screenreader Extensions	This patch contains the extensions required to use Screenreaders together with SAP GUI for Windows 7.10 (see SAP note 740785 for more information).	Use this link .
ECL Viewer 5.1.3	This patch contains corrections for the ECL Viewer shipped together with SAP GUI for Windows 7.10.	Once the first patch for ECL Viewer 5.1.3 is delivered we will insert a link here.

<http://service.sap.com/patches> → SAP Frontend Components



Patching the BI Add-On Frontend on GUI 7.10



BEx Tools and Design time

With SAP NetWeaver 7.0, new tools and a new runtime are available in the Business Explorer. At the same time, all of the previous tools and the Web runtime from SAP BW 3.5 will be delivered in order to guarantee a step-by-step, demand-oriented transition

New BEx Tools in NetWeaver 7.0

- New NetWeaver 7.0 Frontend Features are ONLY available with the new NetWeaver 7.0 BEX Tools.
- Objects that were created with the NetWeaver 7.0 BEx tools can not longer be edited with 3.x BEx Tools.

3.x Tools on top of NetWeaver 7.0 BI

- To ensure that existing customer scenarios can continue to be edited (mainly for correction purposes), an additional set of 3.x BEx tools is delivered with the NetWeaver 7.0 BEX Frontend installation.
- It is possible to work with these 3.x BEx Tools in connection with the new NetWeaver 7.0 BI Server.

Transition from BEx 3.x to BEx NetWeaver 7.0 Tools

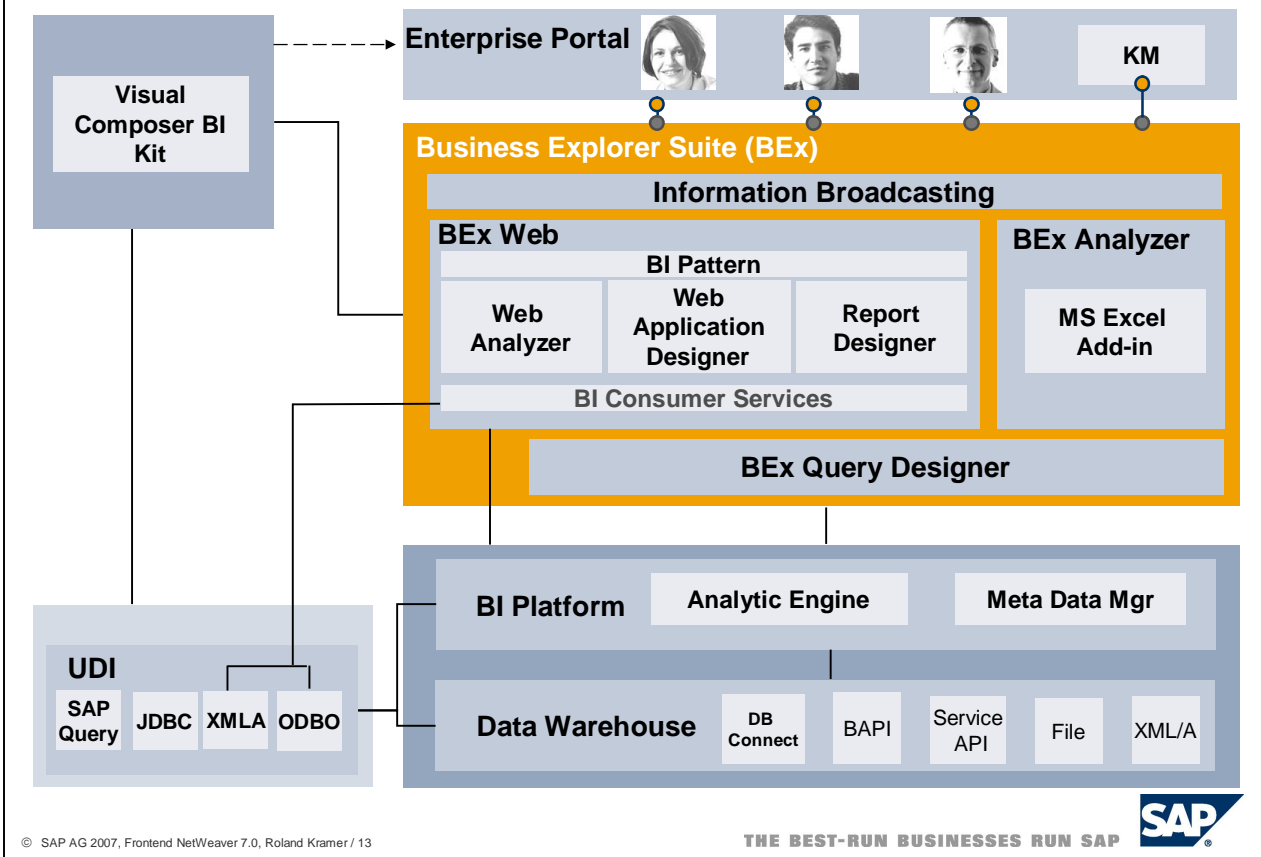
- Conversion (if possible) occurs when the previous objects are opened in the new tools. This enables transition on an as-needed basis. There is no mass conversion of objects.
- Converted objects are stored as new objects. Old objects are never automatically deleted.
- The recommendation is to make the change step by step, because further new features will only be made for the new tools.



BEx Query Designer 3.x & NetWeaver 7.0

- All existing 3.x queries can be edited with the NetWeaver 7.0 BEx Query Designer without further manual adaptation.
- In general there is no migration and there is no new GUID and there are no new objects in database tables.
- After editing with the new tool queries cannot be edited with the 3.5 Query Designer anymore
- The system logic allows you to still edit other 3.5 queries in the 3.5 Query Designer even if they are re-using elements of a query that has been edited with the NetWeaver 7.0 BEX Query Designer as long as the reusable elements use no 7.0 features (i.e. planning settings, new aggregation on formulas, variables with multiple default values).
- Queries created or adapted with the NetWeaver 7.0 Query Designer will still appear in the Open Dialog of the 3.x tool but they cannot be opened anymore
- For those scenarios where customers do not want to use the NetWeaver 7.0 Query Designer, SAP ships a 3.x version of the BEx Query Designer additionally to the NetWeaver 7.0 BEx Query Designer.
- New capabilities are only implemented in the NetWeaver 7.0 Query Designer
- Query Views that were created before (3.x) will still run after a query has been changed with the new NetWeaver 7.0 Query Designer. 3.5 query views can be opened and run with the NetWeaver 7.0 Query Designer
- In general query views do not need to be migrated

Business Explorer Suite in NetWeaver 7.0

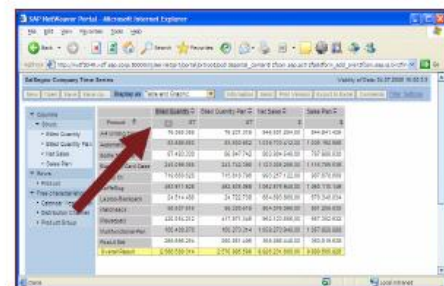
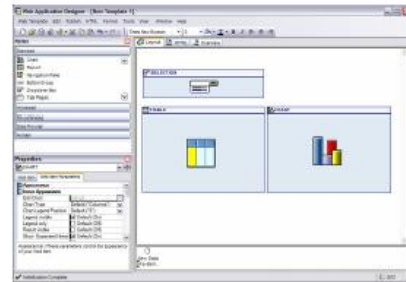


BEx Analyzer 3.x & NetWeaver 7.0

- Existing 3.x queries, query views and workbooks can be opened and executed with the NetWeaver 7.0 BEx Analyzer
- Standard workbooks are automatically upgraded, workbooks with customer coding will be upgraded with a best guess strategy.
- Manual adaptation might be necessary to ensure the proper behavior of the workbook. (e.g customer Visual Basic has to be manually adapted)
- After saving in the new tool workbooks cannot longer be used in the 3.x BEx Analyzer. They will not appear in the open dialog any more.
- For those scenarios were customers do not want to use the NetWeaver 7.0 BEx Analyzer, SAP ships a 3.x version of the BEx Analyzer additionally to the NetWeaver 7.0 BEx Analyzer.
- After migration the old version of a workbook is still available in the old 3.x BEx Analyzer. Migration can be done as many times as need. Old workbooks are not deleted.
- New capabilities are only implemented in the NetWeaver 7.0 BEx Analyzer
- GIS functionality is only available via BEx Web (Web Application Designer)
- Please also refer to the existing Presentation which is also available on Service Marketplace: SAP NetWeaver 7.0 Migration of Business Explorer
<http://service.sap.com/~sapidb/011000358700006180352006E>

Which features of Business Explorer in SAP NetWeaver 2004s require Portal runtime? (*)

- New BEx Web Application Designer (Unicode, Command Wizard, ...)
- Exporting to PDF and Printing
- BI Integrated Planning
- Drag&Drop (Analysis Web Item)
- Web Items (Container Layout, Menu Bar, Tab Pages, Button Group, ...)
- Formatted Reporting with BEx Report Designer
- Document Integration with storage in Knowledge Management
- ...



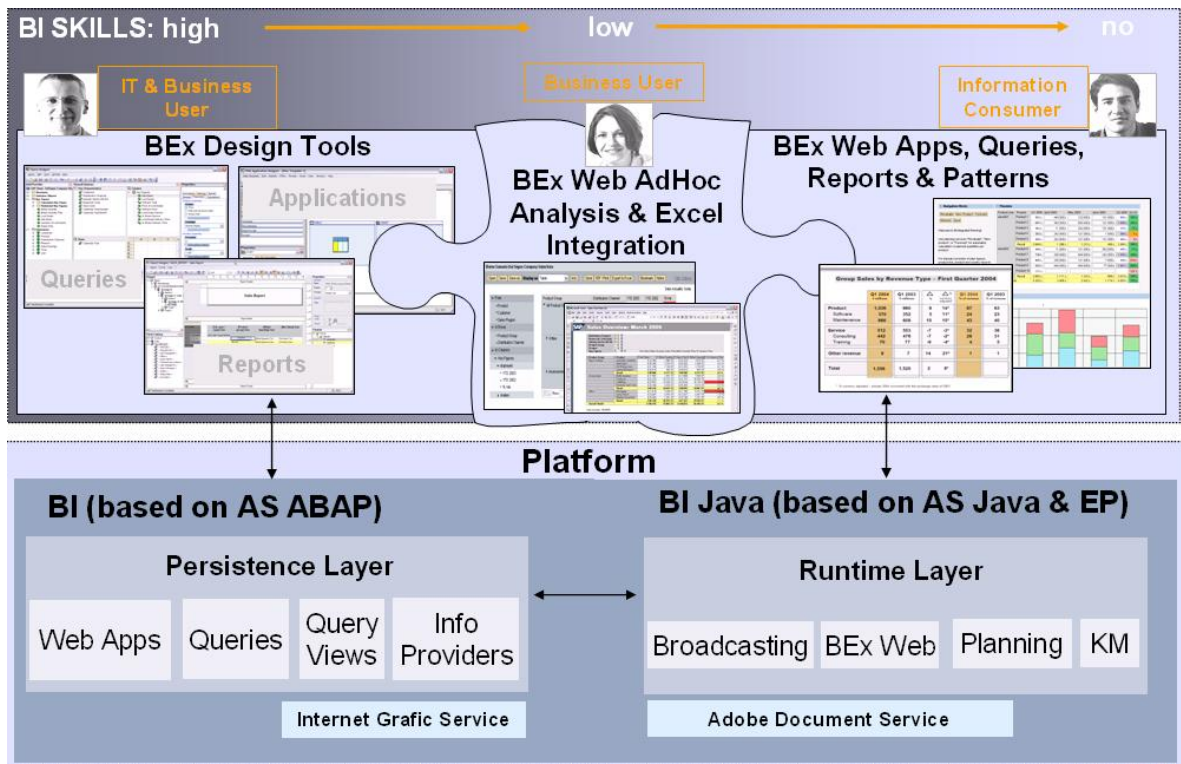
(*) Please remember that all new features of IT scenario Enterprise Reporting, Query, and Analysis (incl. variant Excel Integration with BEx Analyzer) require Usage Type AS Java and EP (i.e. Portal runtime)



Reasons for 1:1 relation between BI and Portal

- 1. BI Master System
 - ◆ BEx Web runtime in Java could only read Web Templates from so-called „BI Master System“
 - ◆ No Web Templates of other BI ABAP system could be read
- 2. Information Broadcasting
 - ◆ Information Broadcasting is designed as easy-to-use tool for end users
 - ◆ User selection of Portal is not indented
 - ◆ Distribution is only possible to so-called “Default Portal”
 - ◆ Federated Portal Network
 - ◆ Federated Portal Network allows connecting several BI systems (with BI Java, incl. AS Java and EP) to another Enterprise Portal

BEx Design- & Runtime in NetWeaver 7.0



© SAP AG 2007, Frontend NetWeaver 7.0, Roland Kramer / 15

THE BEST-RUN BUSINESSES RUN SAP

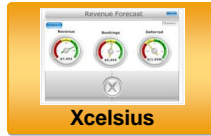


BEx Web Application Designer 3.x & NetWeaver 7.0

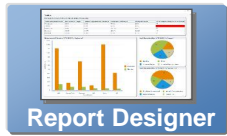
- SAP ensures that existing customer scenarios continue to be able to be edited with the 3.x WAD that is shipped in NetWeaver 7.0 additionally to the NetWeaver 7.0 WAD
- Additionally to many new items in the NetWeaver 7.0 WAD some 3.x items are not included any more.
- Examples
 - ◆ The menu item is replaced by NW Portal functionality
 - ◆ The Alert Monitor is replaced by the Universal Worklist within NW Portal
- A migration can be triggered if a 3.x web application is opened with the NetWeaver 7.0 WAD
- BEx Web Applications in which certain customer-specific enhancements (e.g. Table Interface, custom Java-Script) were made cannot be automatically converted with WAD 7.0. Manual adoption might be necessary to ensure the proper behavior of the web application.
- After saving with the NetWeaver 7.0 WAD, the migrated version of a web application cannot longer be used in the 3.x BEx WAD. Migrated versions will not appear in the open dialog of the old tool.
- After migration, the old version of a web application is still available in the old 3.x BEx WAD. The old version will still appear in the open dialog of the old tool. Migration can be done as many times as need since old web applications are not deleted.
 - old and new versions are stored in different database tables (different format).
- New capabilities are only implemented in the NetWeaver 7.0 WAD
- Web templates for the new BEx Web runtime can only be created with the new BEx WAD.

Business Explorer Suite and BO Portfolio

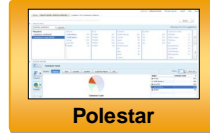
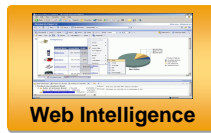
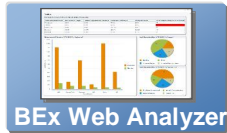
Dashboards,
Visualization



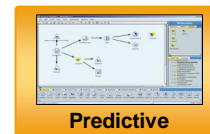
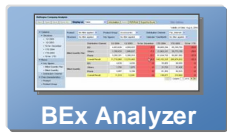
Enterprise
Reporting



Ad-hoc
Query &
Reporting

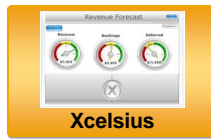


Analysis

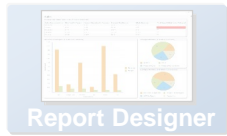


Business Explorer Suite and BO Portfolio - 2010

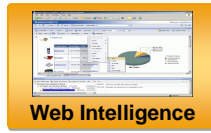
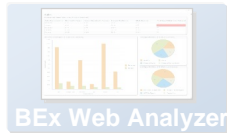
Dashboards, Visualization



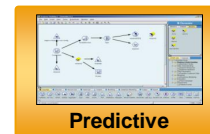
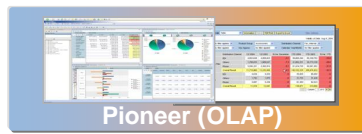
Enterprise Reporting



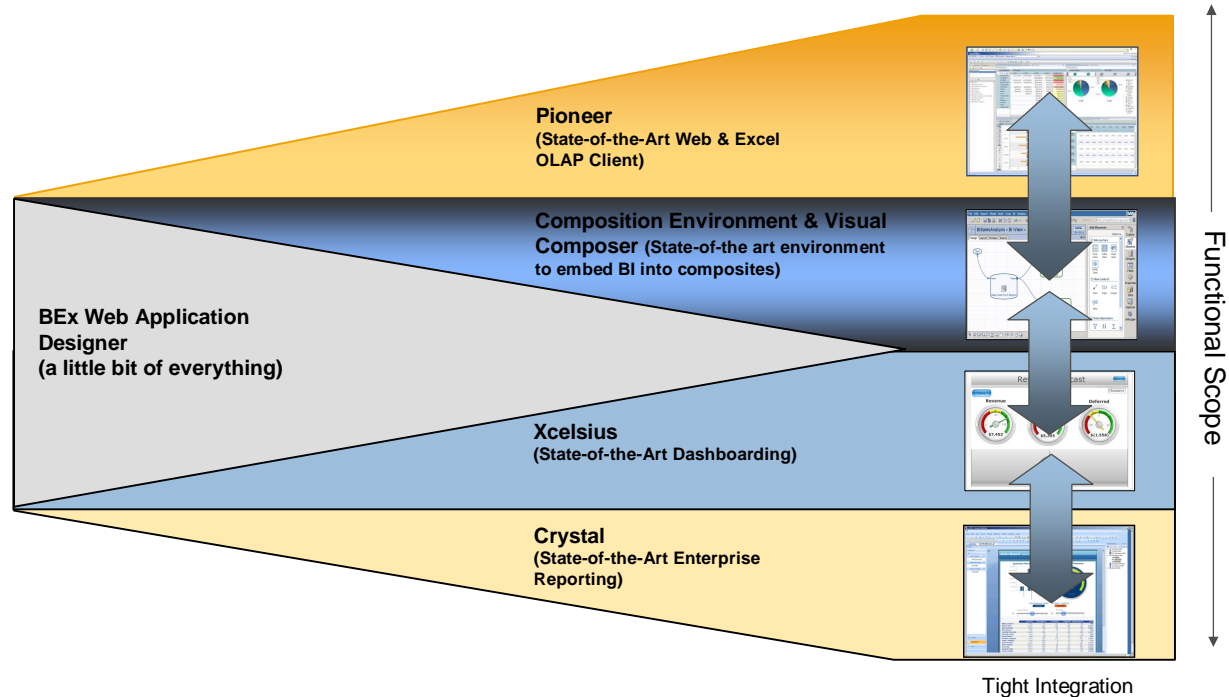
Ad-hoc Query & Reporting



Analysis



SAP Web Application Designer – Roadmap 2010



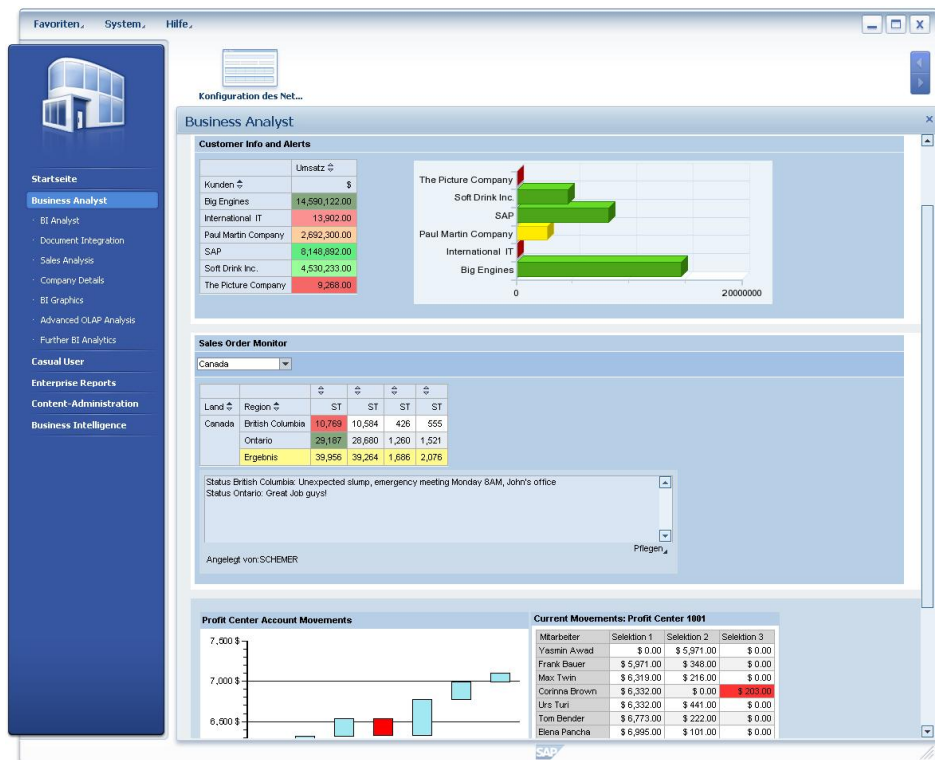
© SAP AG 2007, Frontend NetWeaver 7.0, Roland Kramer / 18

THE BEST-RUN BUSINESSES RUN SAP



- ◆ Visual composer as well as all the BEx Tools will be able to leverage services of the BI Consumer Services Layer (BICS) That means all tools can work with arbitrary datasources (relational, multidimensional)
- ◆ The need for the standalone BEx Web Application Designer will decrease and its tasks will be taken over by BEx Web Analyzer (ad-hoc environment for business users) and Visual Composer (design environment for Business Process experts)
- ◆ Additionally there are tools for specialized BI tasks (Query Designer, Bex Analyzer, Report Designer; Planing Modeler)
- ◆ The Runtime formats (Flash, Web Dynpro etc.) will be become more and more the same for both VC and BEX so that users do not have a different UI experiences.

New possibilities with NetWeaver Business Client



© SAP AG 2007, Frontend NetWeaver 7.0, Roland Kramer / 19

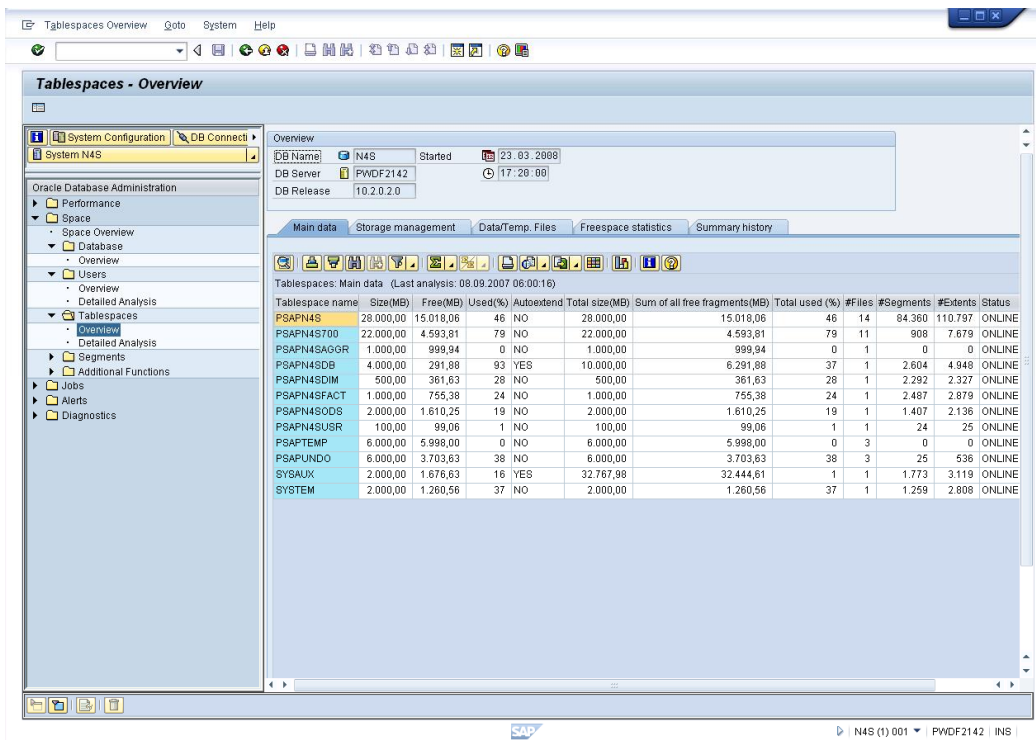
THE BEST-RUN BUSINESSES RUN SAP



Use

- The SAP NetWeaver Business Client (NWBC) is a rich client providing optimal end-to-end performance, familiar desktop integration, and dramatically improved user experience. It allows consumption of portal services, application content and tasks directly from the back-end systems. The NWBC bridges the gap between today's thick clients (such as SAP GUI) and the browser access used to access SAP NetWeaver Portal.
- The NetWeaver Business Client is user interface (UI) software running on the desktop that communicates via HTTP(s) to a server in order to display application interfaces. The interfaces make it easy for the user to start the required application. The main components of the Business Client UI are the frame and the canvas. The actual transaction the user is working in is displayed on the canvas or application content area. The canvas represents the native technology in which the source application created its screens. Practically all standard UI technologies can be presented on a canvas:
 - ◆ Portal applications
 - ◆ Web Dynpro ABAP Applications
 - ◆ Web Dynpro Java applications
 - ◆ BSP Applications
 - ◆ HTML Pages
 - ◆ Dynpro screens that are based on the classic dynpro programming model of SAP
 - ◆ Interactive forms and print forms (PDF)
- Note 900000 - NetWeaver Business Client – FAQ
- Note 1029940 - Release restrictions for the NetWeaver Business Client
- Note 1044235 - F4 help control does not work inside NW Business Client
- Note 1157486 - SAP NetWeaver Business Client Version 2.0 - Patchnote

New Signature Design for SAP GUI 7.10 - Patch 11



The screenshot displays the 'Tablespaces - Overview' window in SAP GUI. The window title is 'Tablespaces - Overview' and it shows a navigation tree on the left with 'Tablespaces' selected. The main area contains a table of tablespaces. The table has the following columns: Tablespace name, Size(MB), Free(MB), Used(%), Autoextend, Total size(MB), Sum of all free fragments(MB), Total used (%), #Files, #Segments, #Extents, and Status. The data is as follows:

Tablespace name	Size(MB)	Free(MB)	Used(%)	Autoextend	Total size(MB)	Sum of all free fragments(MB)	Total used (%)	#Files	#Segments	#Extents	Status
PSAPN4S	28,000.00	15,018.06	46	NO	28,000.00	15,018.06	46	14	84,360	110,797	ONLINE
PSAPN4S700	22,000.00	4,593.81	79	NO	22,000.00	4,593.81	79	11	908	7,679	ONLINE
PSAPN4SAGGR	1,000.00	999.94	0	NO	1,000.00	999.94	0	1	0	0	ONLINE
PSAPN4SDB	4,000.00	291.88	93	YES	10,000.00	6,291.88	37	1	2,604	4,948	ONLINE
PSAPN4SDIM	500.00	361.63	28	NO	500.00	361.63	28	1	2,292	2,327	ONLINE
PSAPN4SFACT	1,000.00	755.38	24	NO	1,000.00	755.38	24	1	2,487	2,879	ONLINE
PSAPN4SODS	2,000.00	1,610.25	19	NO	2,000.00	1,610.25	19	1	1,407	2,136	ONLINE
PSAPN4SUSR	100.00	99.06	1	NO	100.00	99.06	1	1	24	25	ONLINE
PSAPTEMP	6,000.00	5,998.00	0	NO	6,000.00	5,998.00	0	3	0	0	ONLINE
PSAPUNDO	6,000.00	3,703.63	38	NO	6,000.00	3,703.63	38	3	25	536	ONLINE
SYSAUX	2,000.00	1,676.63	16	YES	32,767.98	32,444.61	1	1	1,773	3,119	ONLINE
SYSTEM	2,000.00	1,260.56	37	NO	2,000.00	1,260.56	37	1	1,259	2,808	ONLINE

© SAP AG 2007, Frontend NetWeaver 7.0, Roland Kramer / 20

THE BEST-RUN BUSINESSES RUN SAP



Availability

- The new Signature Design is available for all customers in **Q3/2008** when the SAP GUI 6.40 reached it's end of maintenance.
- Note 1233328: Signature Design for SAP GUI for Windows (Patch 11, 7.10C3)
- SAP GUI in SDN: <http://sdn.sap.com/irj/sdn/sap-gui>

Use

- With "Signature" SAP GUI for Windows receives a state of the art visual design highly suitable for usage in new environments like Windows Vista / Office 2007, but also compatible with all older systems.
- "Signature" will become available for all major SAP User Interface technologies and will harmonize the look and feel of SAP applications for the end-user.

New features in Nova

- The SAP GUI window can be moved not only by clicking on the window header, but also on the left and right border.
- You can close SAP GUI windows which are currently inactive (the buttons for minimizing, maximizing and closing are active even when the SAP GUI window is inactive).
- You can use larger or smaller fonts in Nova (in Enjoy the font size is limited to 80-120% since with other font sizes the UI elements were sometimes displayed cluttered or overlapped)
- Buttons now have a "hover state" which means that when hovering over them with the mouse cursor they are highlighted.