

增强LO数据源

应用于:

SAP BI, NW2004s Business Intelligence.

概要:

这份文档主要通过一步步操作实现LO数据源增强。对标准数据源0Customer_attr增加一个字段为例详细说明如果实现对标准数据源的增强，此操作过程同样也适用于业务数据源。

内容目录:

1. 查找字段	2
2. 增加字段	2
3. 检查数据源	6
4. 填充数据	7
5. 数据检查	14
6. 复制数据源	15

1. 查找字段

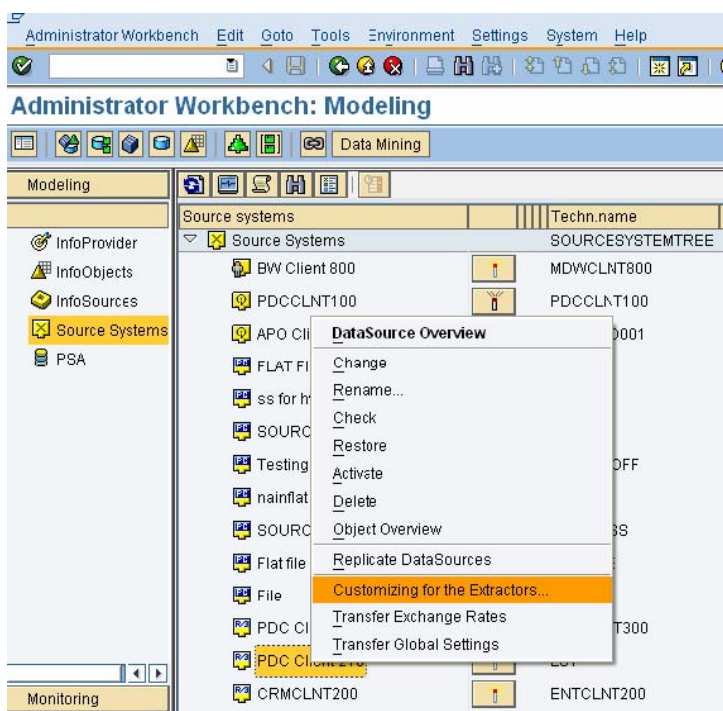
根据需求对LO数据源CUSTOMER_ATTR增强，需要对数据源增加下列字段，第一：需要查找到相应的字段和类型。第二：从ECC中找到字段所对应的表。

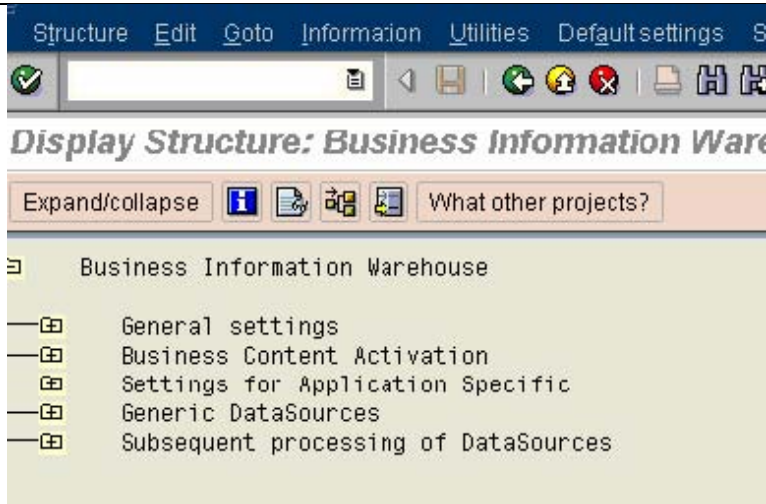
编号	字段	字段类型	描述
1	Zz1payer	KUNN2	业务伙伴的客户号
2	Zz1Pcc_area	KKBER	贷方控制范围
3	Zz1Pind_cd2	BRAN2	行业代码 2
4	ZZ1pcustgrp	KDGRP	客户组

2. 增加字段

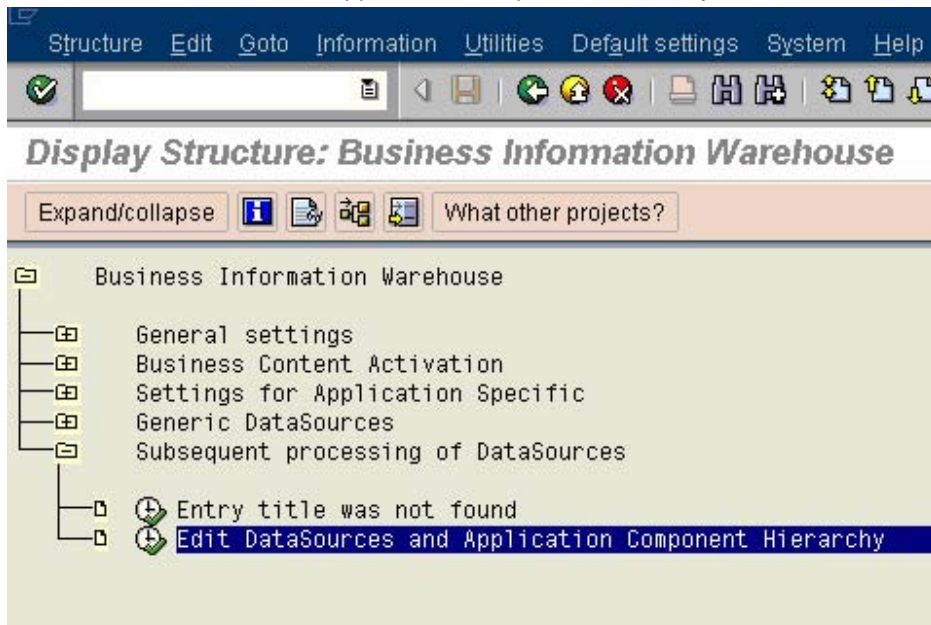
数据源存在于源系统因此如果我们需客制化数据源，首先进入到源系统，你可以通过在ECC系统使用事务码SBIW或在登陆BW系统：

- 进入数据仓储工作台(RSA1).
- 进入源系统
- 选择ECC源系统点击右键选择客户化抽取器将进入ECC系统



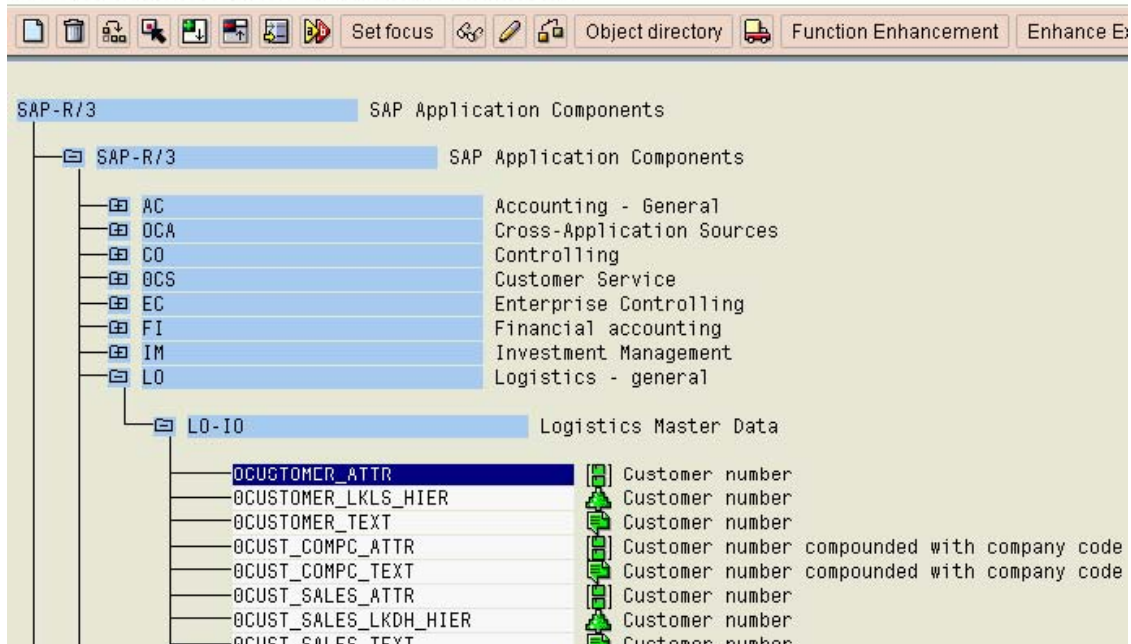


选择“Edit DataSources and Application Component Hierarchy”



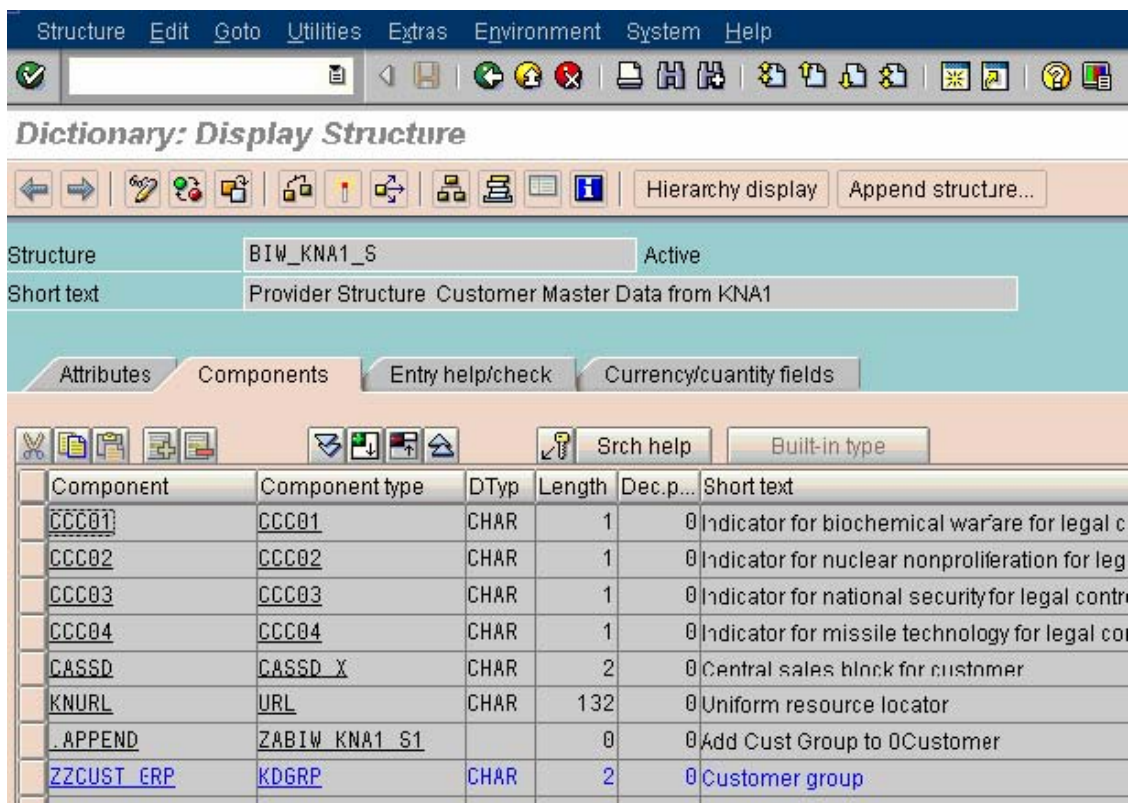
查找“0CUSTOMER_ATTR”客户号数据源（或是其他的数据源你决定对它进行定制化）

Postprocess DataSources and Hierarchy

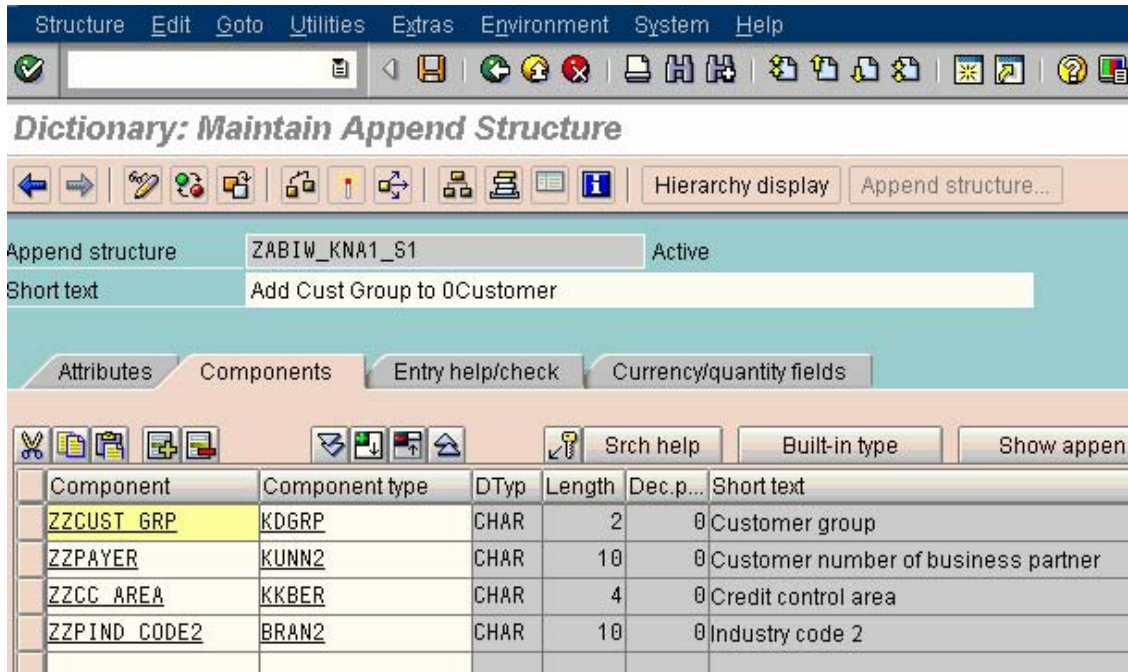


•双击进入数据源

•到达appended structure



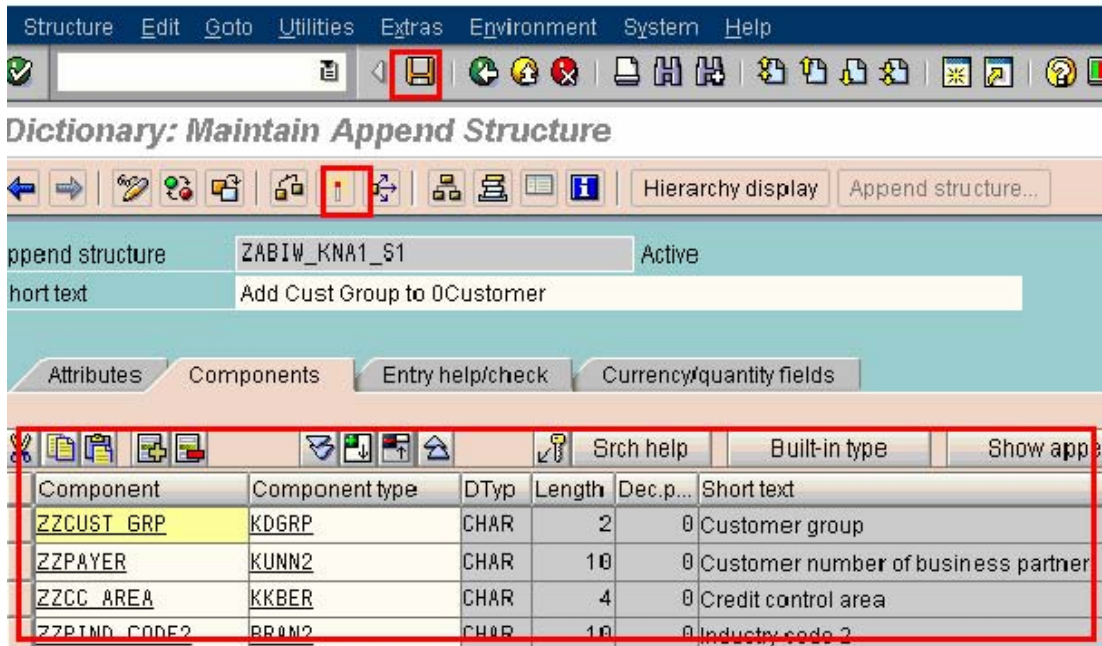
双击appended structure – ZBIW_KNA1_S1或是对应的那一个&填入你要增加的字段




- 检查，保存后激活-对应的字段被增加到了相应的收取结构中。

.APPEND	ZABIW_KNA1_S1		0	0	Add Cust Group to 0Customer
ZCUST_GRP	KDGRP	CHAR	2	0	Customer group

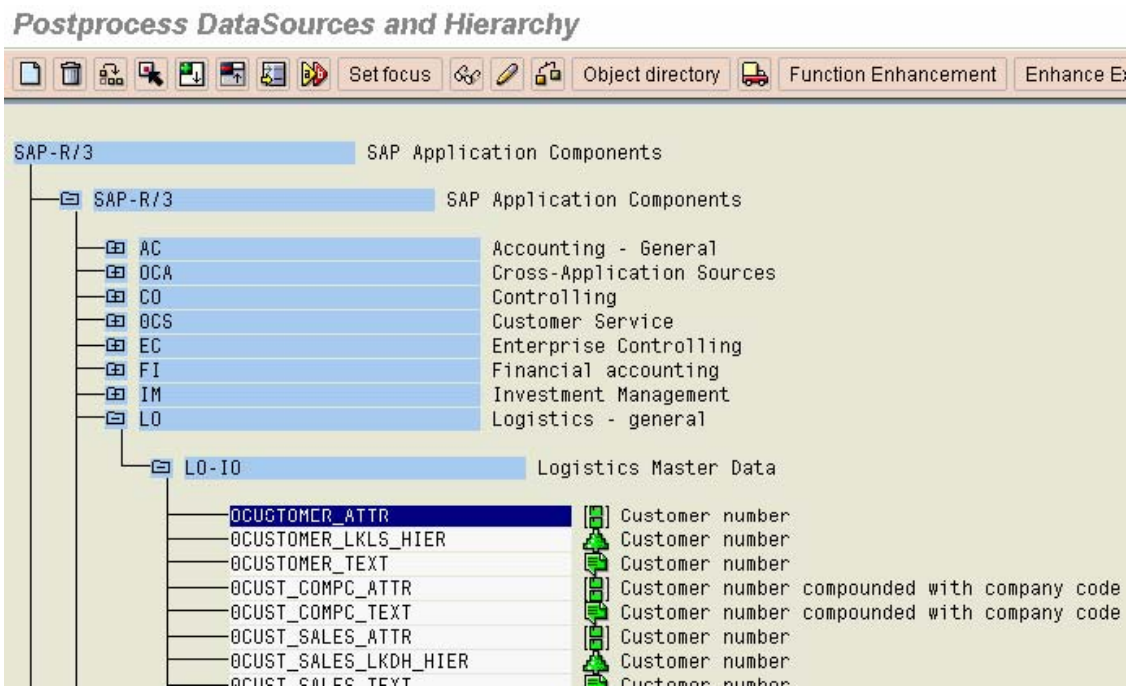
Double Click on appended structure – ZBIW_KNA1_S1 (or your chosen one) & add the fields you wish to add to DataSource)



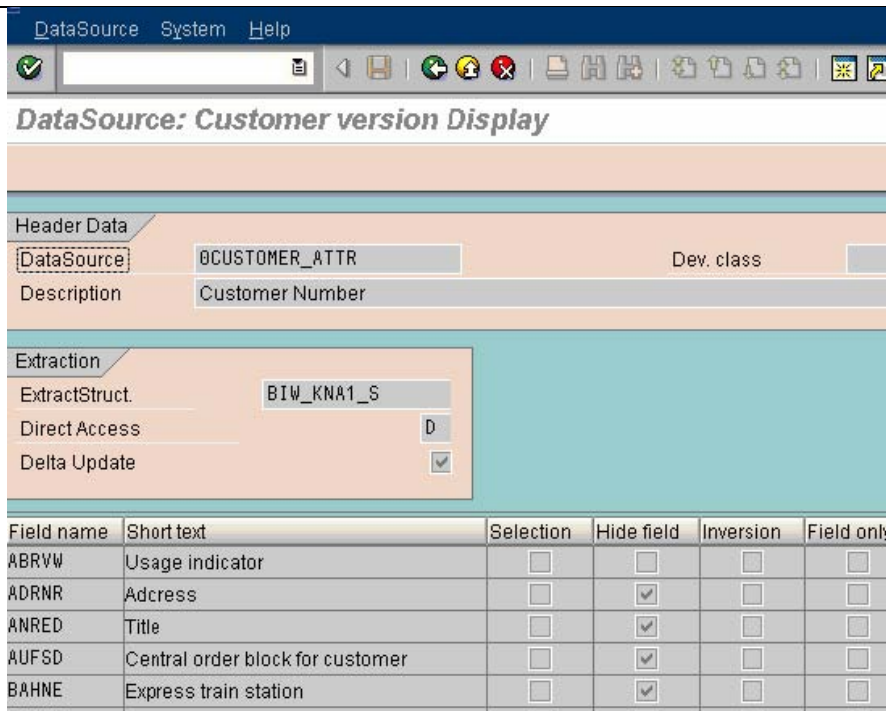
- 点击返回 

3. 检查数据源

双击数据源OCUSTOMER_ATTR



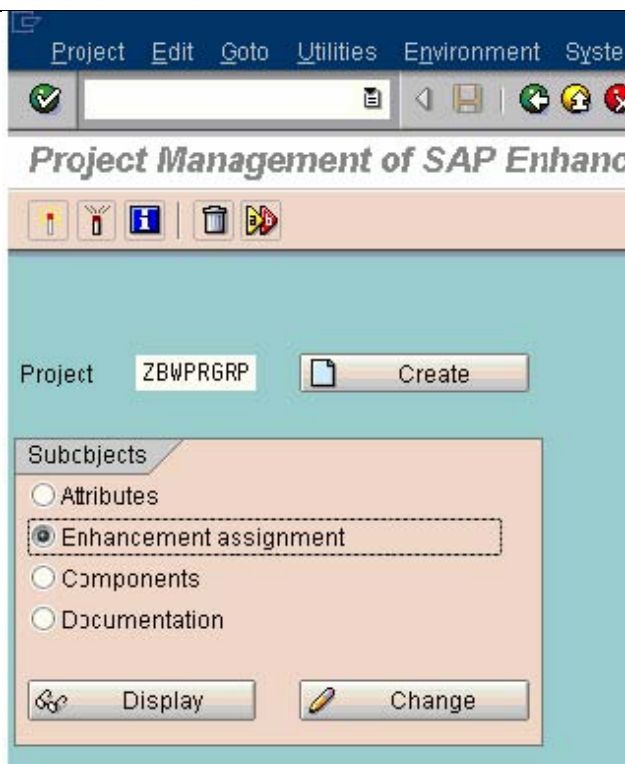
- 双击 Extract Structure BIW_KNA1_S, 检查字段是否被增加到抽取结构中, 并把Hide Field 的勾去掉。



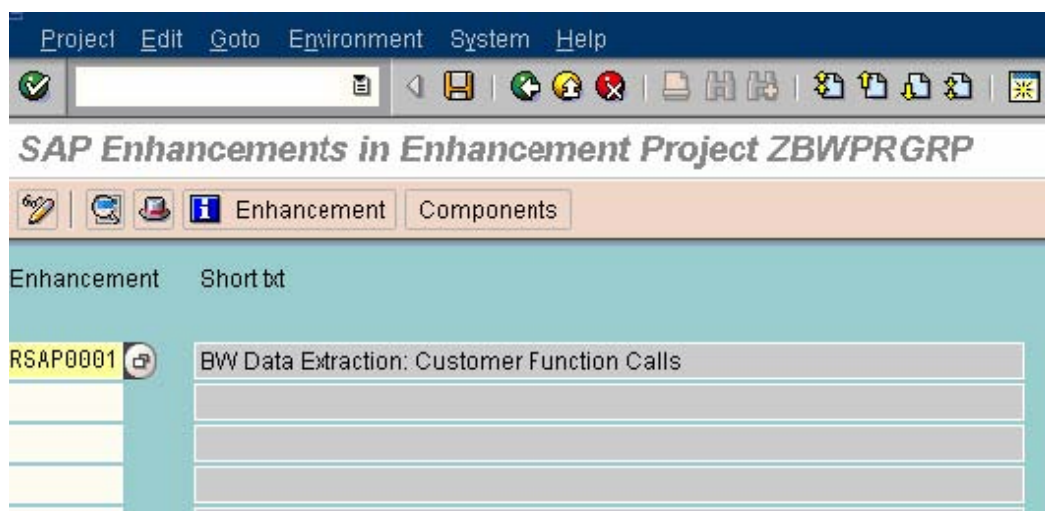
0PEND	ZABIW_KNA1_S1		0	0 Add Cust Group to 0Customer
ZCUST_GRP	KDGRP	CHAR	2	0 Customer group

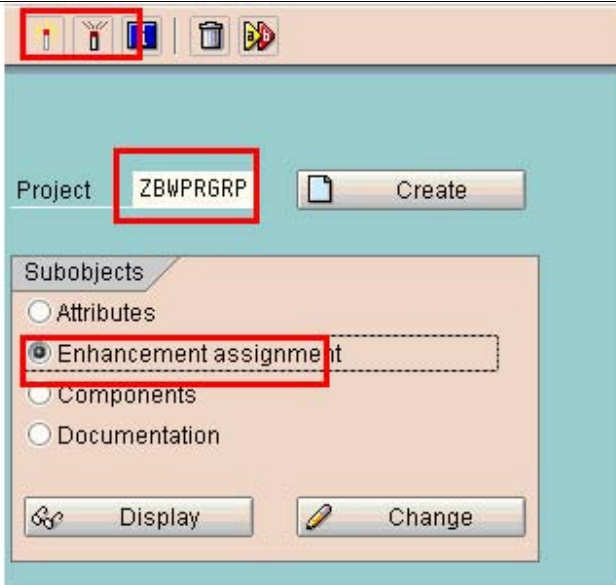
4. 填充数据

- 登录进入ECC系统
- 选择T-CODE:CMOD
- 首先选择一个或创建一个项目将增强写入这个项目中。
- 单击Enhancement Assignments
- 点击Change

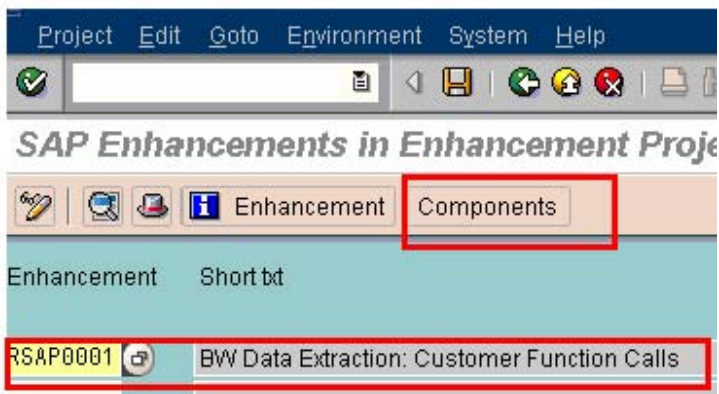


- 选择增强函数RSAP0001
- 点击Components

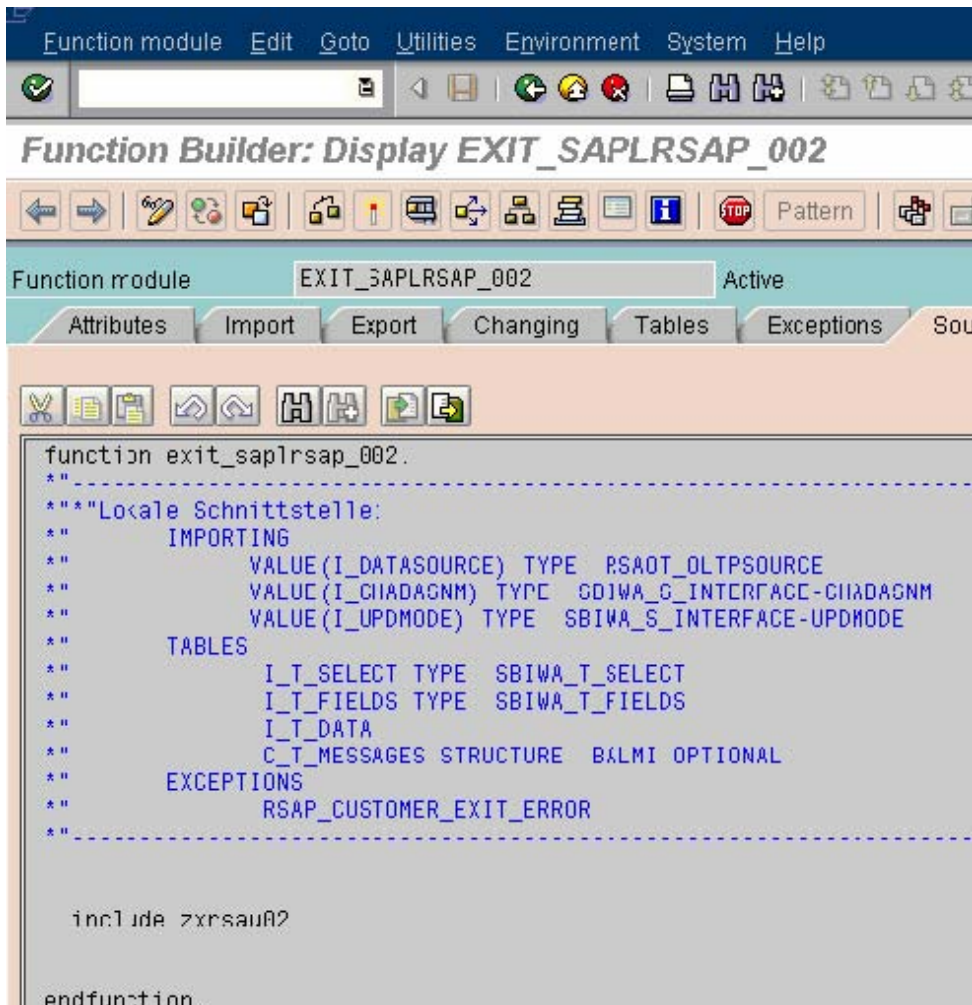
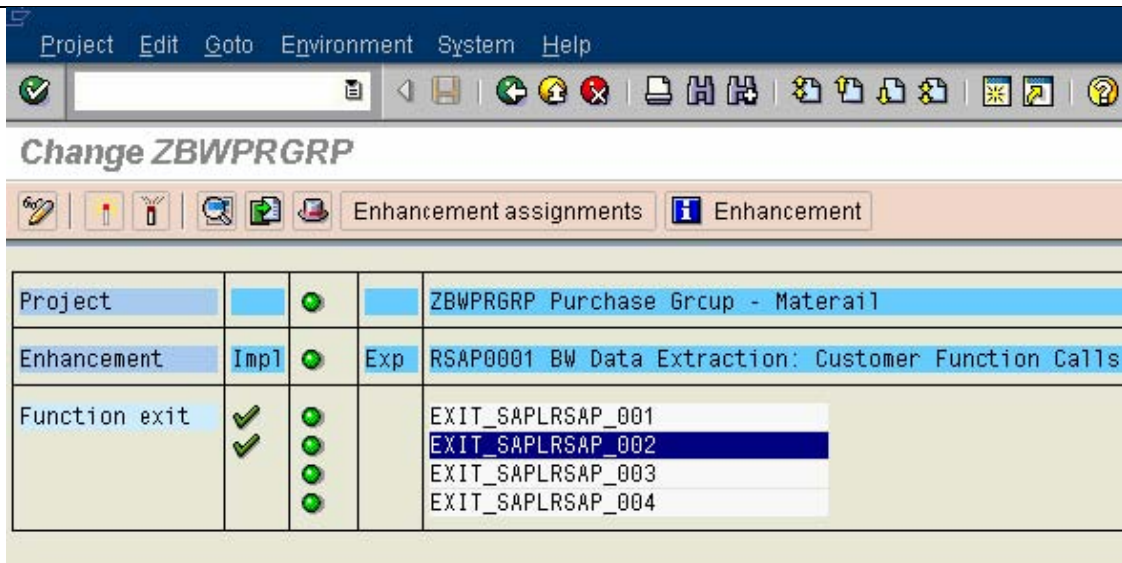




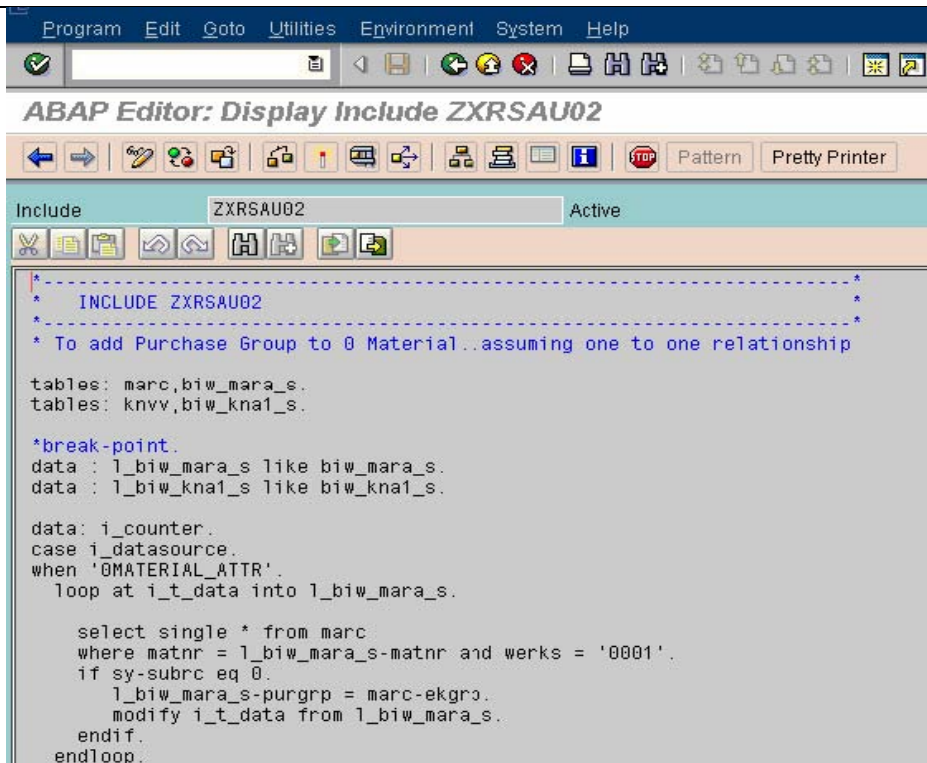
- Press Continue – In case it prompts for some confirmation etc.



- 选择"EXIT_SAPLRSAP_002" &点击进入。



- 点击“include zxrspau02”，需要写ABAP代码将增加字段的数据填入相应的表中。



- 选择修改模式.
- 代码需填写在“CASE”与“ENDCASE”之间.

Write ABAP Code

<< ABAP CODE>>

DATA : l_biw_knvv_s LIKE biw_kna1_s.

DATA : zzlpayer LIKE knvp-kunn2, zzlpcc_area LIKE knkk-kkber,

zzlpind_cd2 LIKE kna1-bran2,zzlpterm LIKE knvv-zterm,

zzlpcustgrp LIKE knvv-kdgrp.

<<From here Code is to be added>>

when '0CUSTOMER_ATTR'.

clear i_counter.

```
loop at i_t_data into l_biw_knal_s.

* Selection of Payer against "Sold to" of Customer

select * from knvp

where kunnr = l_biw_knal_s-kunnr

and    VKORG = l_biw_knal_s-vkorg

and    VTWEG = l_biw_knal_s-vtweg

and    SPART = l_biw_knal_s-spart

and parvw = 'RG' .

if sy-subrc eq 0.

l_biw_knal_s-zzlpayer = knvp-kunn2.

Else

l_biw_knal_s-zzlpayer = l_biw_knal_s-kunnr.

Endif

<<* If Payer is found then pick up Payer's credit control area>>

select * from knkk

up to 1 rows

where kunnr =    l_biw_knal_s-zzlpayer.

endselect.

if sy-subrc eq 0.

l_biw_knal_s-zzlpcc_area = knkk-kkber.
```

```
endif.
```

```
<<* If Payer is found then pick up Payer's Industry Code2>>
```

```
select * from knal
```

```
up to 1 rows
```

```
where kunnr = l_biw_knal_s-zzlpayer.
```

```
endselect.
```

```
if sy-subrc eq 0.
```

```
l_biw_knal_s-ZZlpind_cd2 = knal-bran2.
```

```
endif.
```

```
<<* If Payer is found then pick up Terms of Payment, Payer's Customer Group>>
```

```
select * from knvv
```

```
where kunnr = l_biw_knal_s-zzlpayer
```

```
and VKORG = l_biw_knal_s-vkorg
```

```
and VTWEG = l_biw_knal_s-vtweg
```

```
and SPART = l_biw_knal_s-spart.
```

```
if sy-subrc eq 0.
```

```
l_biw_knal_s-zzlpterm = knvv-zterm.
```

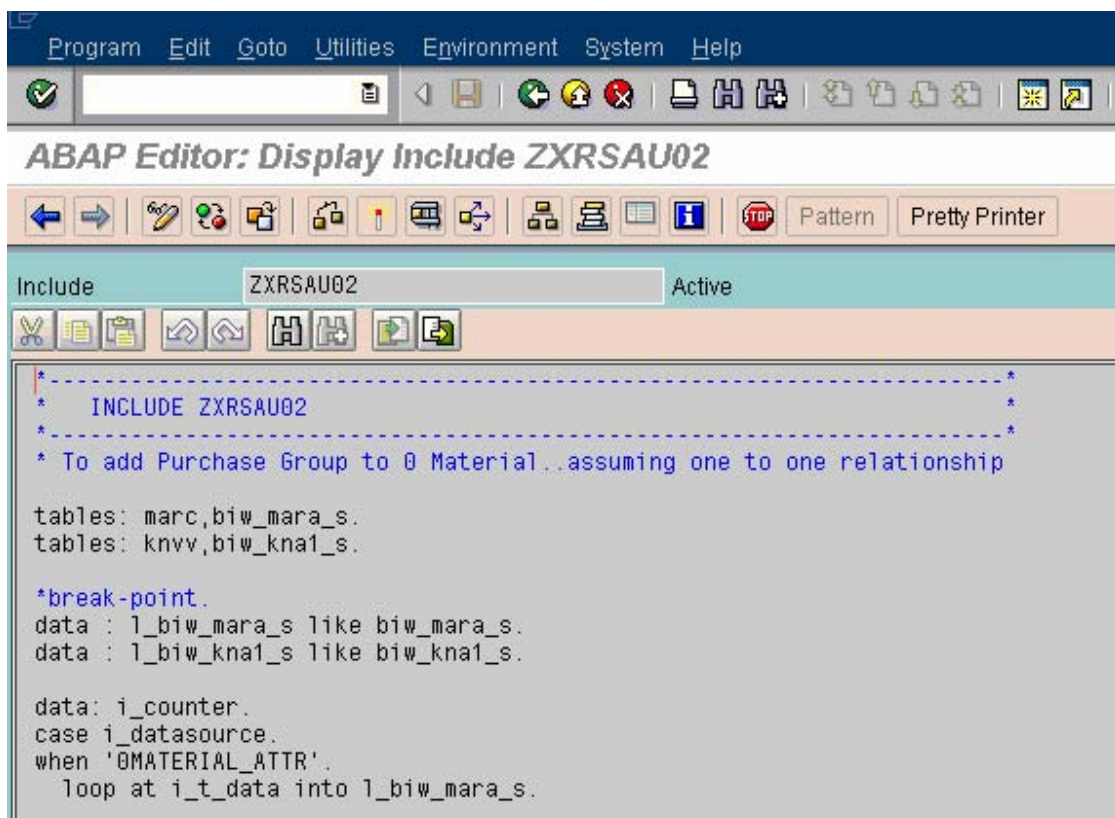
```
l_biw_knal_s-zzlpcustgrp = knvv-kdgrp.
```

```
endif.
```

```
modify i_t_data from l_biw_knvv_s.
```

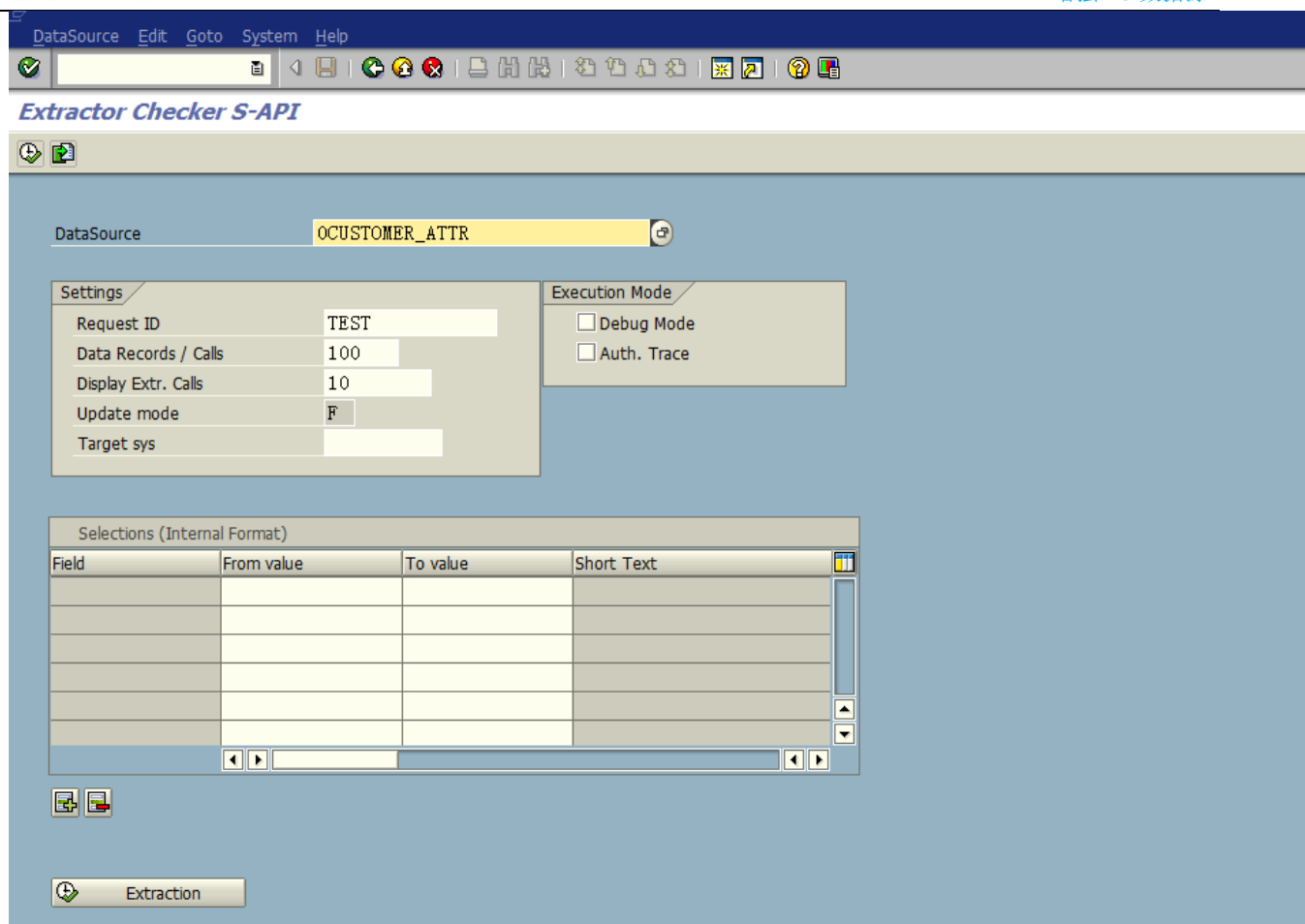
```
endloop.
```

- 点击“Check”，没有报错后保存并激活。
- 返回。



5. 数据检查

进入T-CODE:RSA3进行数据模拟测试查看增加字段是否有数据



6. 复制数据源

由于BW系统和ECC系统的数据源字段之间存在映射关系，因此需要对ECC系统中增加的字段复制到BW系统。

