

RRI: Parameters Not Transferred to R/3 Transaction



Applies to:

SAP BI 7.0 and ECC 6.0. For more information, visit the [EDW homepage](#).

Summary

When you have to call certain R/3 transactions from BEx Query through RRI, the parameters of the transaction are not filled. As a result the calling of R/3 transaction in BI through RRI fails.

This paper explains the solution to overcome this problem.

Author: Akella Kameswari and Kanchan Angalwar

Company: Deloitte Consulting

Created on: 6 September, 2011

Author Bio

Kanchan Angalwar is a BI-ABAP Consultant in Deloitte with overall 5 years of experience in SAP.

Kameswari Akella currently works at Deloitte Consulting on SAP BI/BW.

Table of Contents

Scenario:.....	3
Solution:	3
Report in R/3:.....	3
ABAP Program details:	3
Steps in BI:.....	4
Results:	8
Related Content.....	10
Disclaimer and Liability Notice.....	11

Scenario:

There is a business need to call transaction "S_ALR_87013611" from BEx Query. Parameters are not transferred when you directly call the transaction "S_ALR_87013611" by conventional way through RRI. The reason is "the Basis report-report interface cannot identify all the necessary parameters in transaction S_ALR_87013611".

Solution:

In this case a custom program that has all the necessary parameters and tables as selections fields and that then calls the actual transaction with the ABAP command CALL TRANSACTION or calls the desired program with SUBMIT can help.

Store the field name, data element, domain AND Parameter ID in the sender/receiver assignment (Transaction RSBBS) in the assignment details in BW. Choose type "3 Table field". Create an ABAP program in transaction SE38: REPORT ZBW_RRI_S_ALR_87013611.

Enter this ABAP report as a branch destination instead of transaction 'S_ALR_87013611'.

Report in R/3:

This code is specific to the scenario mentioned above; here we are executing a report behind the transaction as the parameters of the transaction are not filled by the conventional way.

ABAP Program details:

```
REPORT zbw_rri_s_alr_87013611.
CONSTANTS: c_per TYPE cosp-perbl VALUE '001'.
DATA: wa_uni_idc25 LIKE t803vp-uni_idc25,
      wa_prog(50) TYPE c.
* Selection parameters for report
PARAMETERS:
      p_kokrs LIKE ccr1s-kokrs,
      p_gjahr LIKE cosp-gjahr,
      t_perbl LIKE cosp-perbl,
      p_versn LIKE cosp-versn.
SELECT-OPTIONS: r_kostl FOR ccr1s-kostl,
               r_kstar FOR ccr1z-kstar.
CLEAR: wa_uni_idc25, wa_prog.
* Get program ID dynamically (As it is specific to system ,changes in each system )
SELECT SINGLE uni_idc25
      FROM t803vp
      INTO wa_uni_idc25
      WHERE rgjnr = '1SIP'
      AND progclass = 'RW_EXECUTION'.
* Create Program name
CONCATENATE 'GP' wa_uni_idc25 sy-mandt INTO wa_prog.
```

* Execute the program with parameters passed from BI passed to the screen field id

```
SUBMIT (wa_prog)
WITH $!kokre EQ p_kokrs
WITH $!gjahr EQ p_gjahr
WITH $!periv EQ c_per
WITH $!perib EQ t_perbl
WITH $!verp EQ p_versn
WITH _1koset-low EQ r_kostl-low
WITH _1koset-high EQ r_kostl-high
WITH _1kstar-low EQ r_kstar-low
WITH _1kstar-high EQ r_kstar-high.
```

Note: In some cases where R/3 transaction needs to be called and the parameters of the transaction are not filled, we can use same method by writing an ABAP report including syntax 'CALL TRANSACTION' instead of 'SUBMIT program'. Below is the sample code for same.

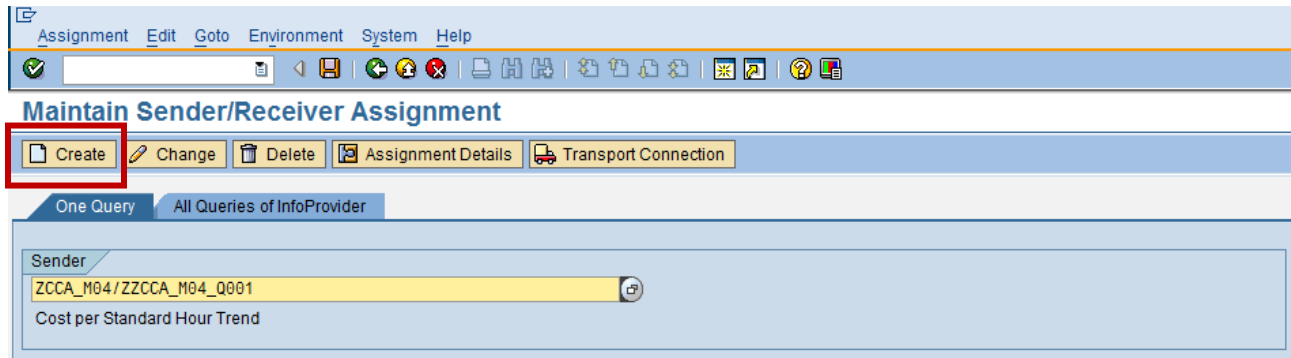
```
REPORT ZBW_RRI_IW53.
TABLES: VIQMEL.
PARAMETERS: p_QMNUM TYPE VIQMEL-QMNUM,
            p_QMART TYPE VIQMEL-QMART.
*Set memory ID to be read from BI
set PARAMETER ID 'IQM' FIELD P_QMNUM.
SET PARAMETER ID 'QMR' FIELD p_qmart.
* Call transaction with the above parameters
CALL TRANSACTION 'IW53'.
```

Steps in BI:

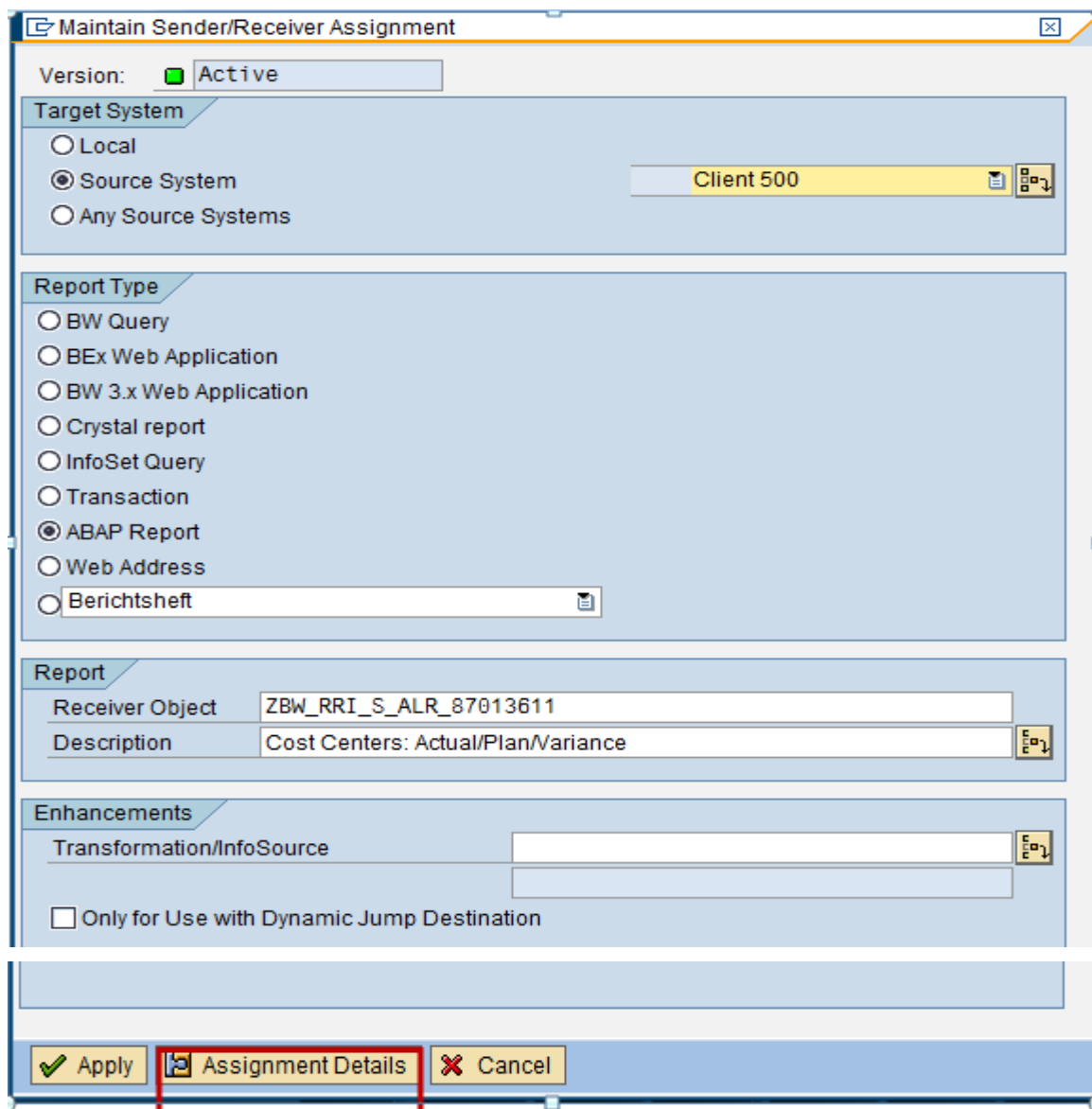
Step1: Sender Query: ZZCCA_M04_Q001

The screenshot displays the SAP BI Query Designer interface for query ZZCCA_M04_Q001. The 'InfoProvider' section on the left shows the 'Key Figures' tree with 'Calculated Key Figure' and 'Restricted Key Figures' under 'Amount', and 'Dimensions' tree with various organizational and financial dimensions. The 'Rows/Columns' section shows the 'Free Characteristics' tree with '[DCOSTELMNT] Cost Element', '[DCOSTCENTER] Cost Center', '[DCURTYPE] Currency Type', and '[DCOSTCENTER__0PROFIT_CTR] Profit Center'. The 'Preview' section shows a table with columns for 'January', 'CPSH Jan', 'February', and 'CPSH Feb', and rows for 'VARIABLE', 'Personnel', 'Ind Materia', 'Tooling', 'Utilities', 'Maintenanc', 'Other', 'Sub-Total', 'FULL ABSO', 'Operations', 'Allocated D', and 'Cost Center'.

Step 2: Goto RSBBS transaction code and select the above query.

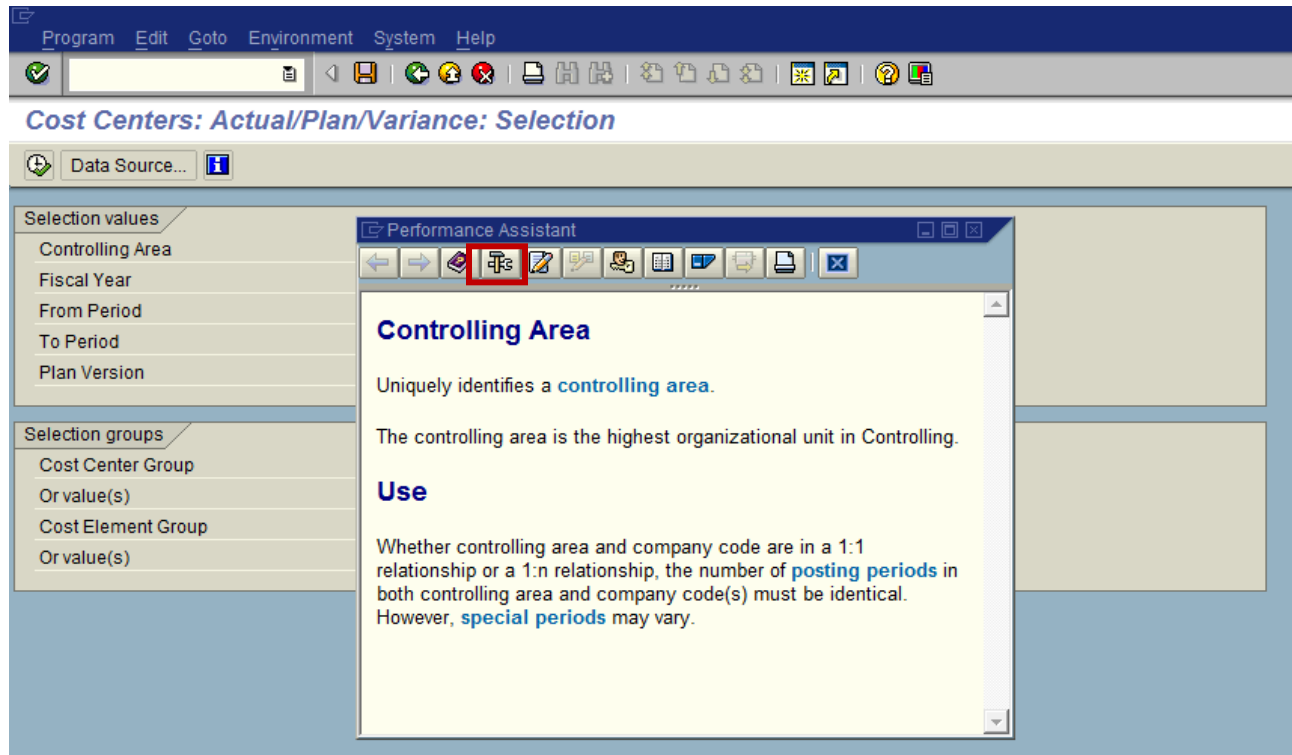


Step 3: Click on 'Create' button. Now, select the report type as 'ABAP report' instead of 'Transaction'. Give the report name as 'ZBW_RRI_S_ALR_87013611' which is created in the source system.

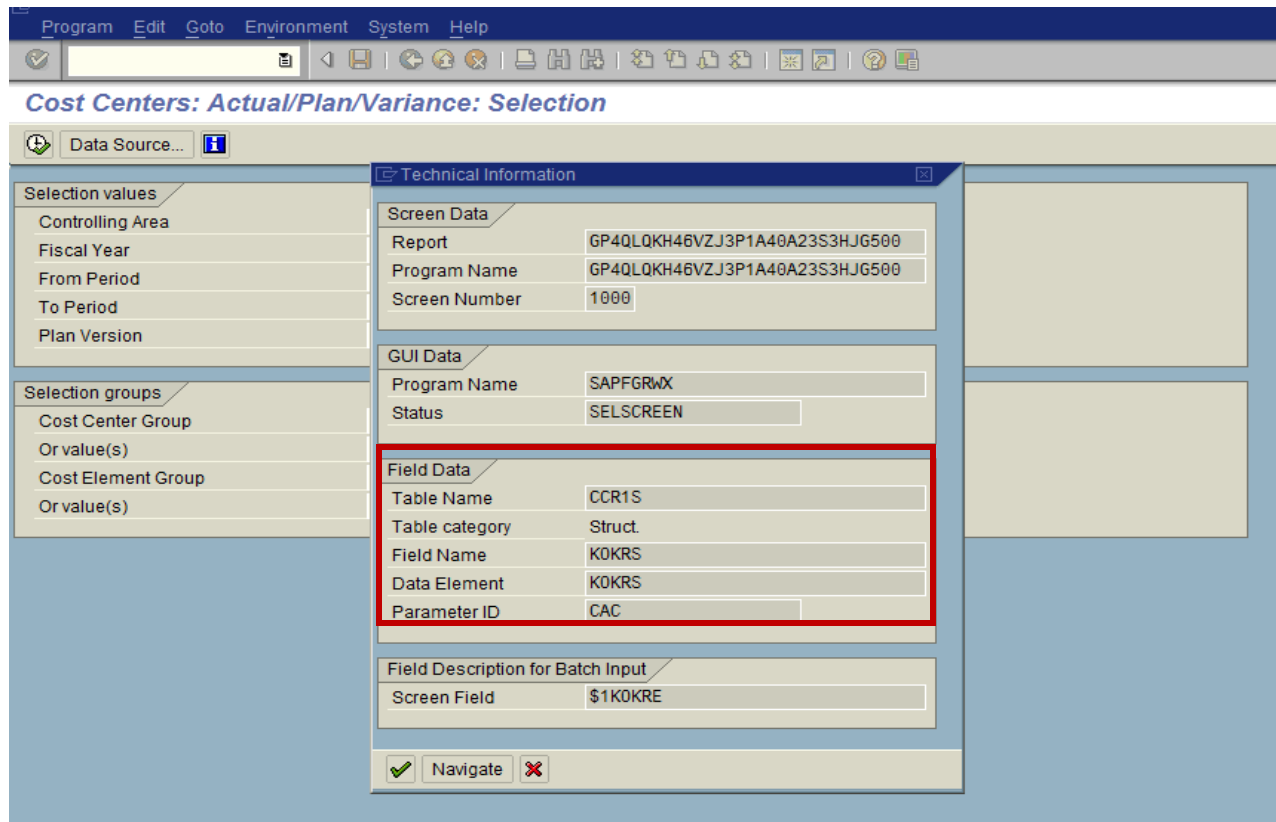


Step 4: Maintain all the Assignments

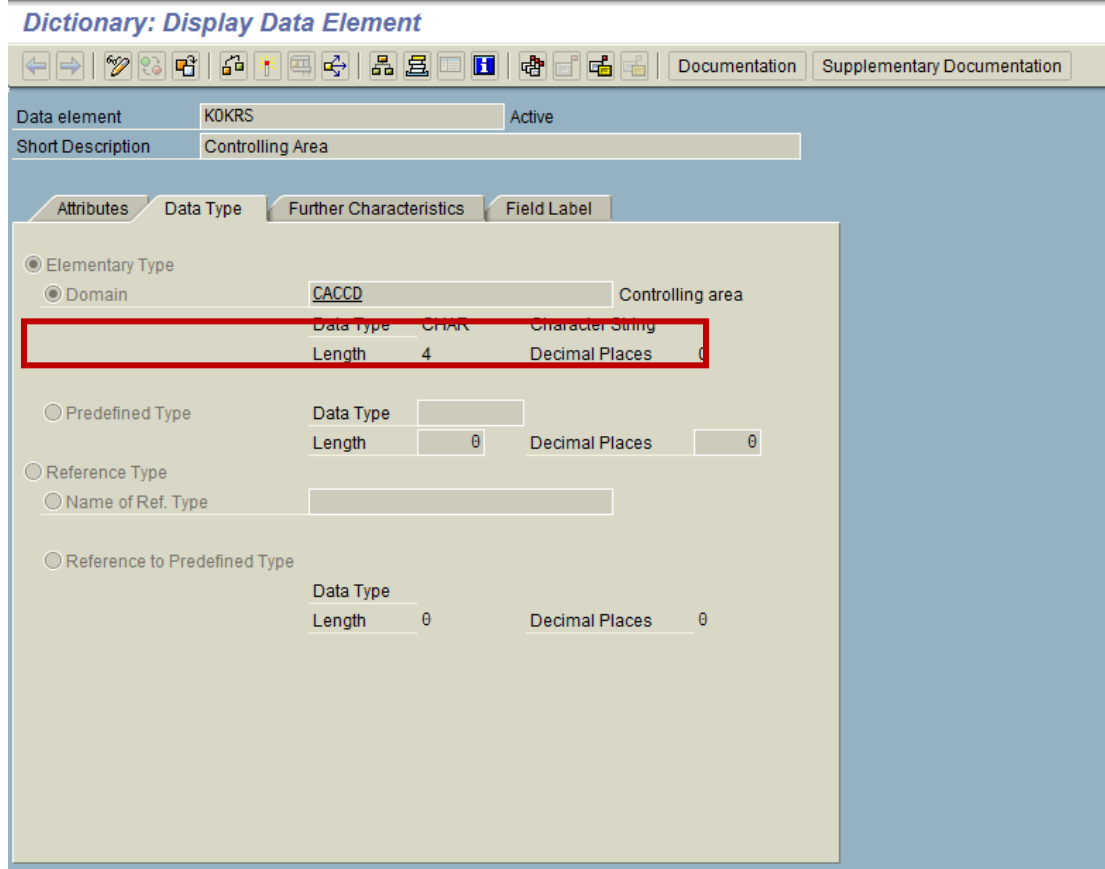
These details can be obtained from F1 help of a particular field in R/3. For example, for Controlling area infoobject, select type as 'Table Field'. Now, Goto transaction 'S_ALR_87013611'. Click on F1 help for Controlling Area. The screenshot is given below:



Now, click on technical information.

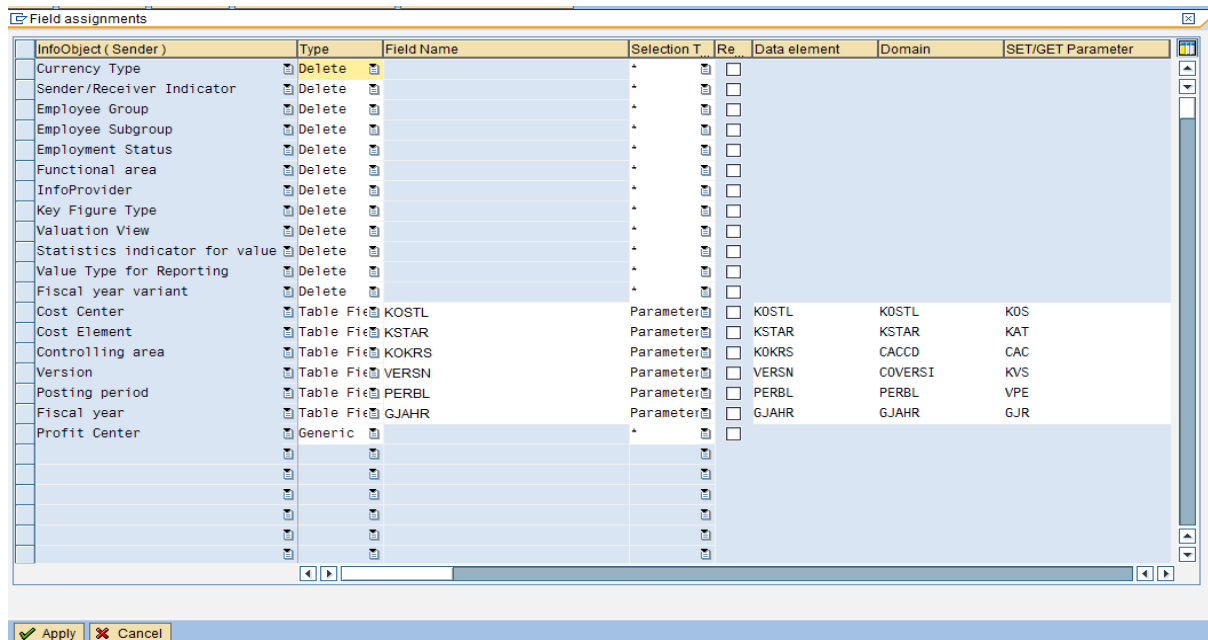


Click on DataElement to find out the Domain. For example, here click on 'KOKRS' Data Element, the following screen appears:



Now, fill in all the details of Controlling area infoobject. Type- 'Table Field', Field - 'KOKRS', DataElement - 'KOKRS', Domain - 'CACCD' , SET/GET Parameter - 'CAC'.

Follow the similar procedure for all the infoobjects whose values you want to send to R/3 transaction code. Fill in the assignment details. The screenshot is given below:



Step 5: Save the Sender/Receiver Assignment.

Assignment Edit Goto Environment System Help

Maintain Sender/Receiver Assignment

Create Change Delete Assignment Details Transport Connection

One Query All Queries of InfoProvider

Sender
ZCCA_M04/ZZCCA_M04_0001

Receiver

ID	V	RT	RApp	RS	Report title	Src. System	Transformation/InfoSource	Receiver object	Var
QURY0001	<input checked="" type="checkbox"/>	RT			Cost Centers: Actual/Plan/Varia...	CLNT500		ZBW_RRI_S_ALR_87013611	

Results:

Execute the Query.

Variable Entry

Available Variants: Save Save As... Delete [Show Variable Personalization](#)

General Variables

Variable	Current Selection	Description
* Fiscal Year	2010	Calendar year, 4 spec. periods 2010
* Posting period	3	3
* Plan Version	0	0
* Currency Type	10	Company code currency
Cost center/Cost center area		

Do not show variable screen again

OK Check Cancel

The following screen shows the report output:

	March	CPSH Mar	1st Quarter	CPSH Q1
VARIABLE COST		\$ 0,00	\$ 0,00	\$ 6,000
Personnel Costs		\$ 2,026,44	\$ 0,00	\$ 2,026
Ind Material / Op Supplies				
Tooling				
Utilities				
Maintenance Cost				
Other		\$ -2,026,44	\$ 0,00	\$ 15,974
Sub-Total Variable Spending		\$ 0,00	\$ 0,00	\$ 18,000
FULL ABSORPTION COST		\$ 0,00	\$ 0,00	\$ 0,00
Operations Support				
Allocated Depreciation				
Cost Center Depreciation				
Sub-Total FAC Spending				
TOTAL SPENDING		\$ 0,00	\$ 0,00	\$ 18,000
Standard Hours				
Direct Employees		1	0,00	3
Indirect Employees				0,00

Execute the RRI by clicking on 'Cost Centers: Actual/Plan/Variance' which is the Report description that we have given in Step 3.

151P-001	Cost Centers: Actual/Plan/Variance
Date:	06.09.2011
Pages:	6
Requested by:	
Controlling Area	CA* Controlling Area
Fiscal Year	2010
From Period	1
To Period	3
Plan Version	0
Cost Center/Group	*
Cost Element Group	* Cost Element Group
Cost Centers: Actual/Plan/Variance	Date: 06.09.2011 Page: 2 / 6
Cost Center/Group	* Column: 1 / 2
Person responsible:	
Reporting period:	1 to 3 2010

The parameters are passed successfully. In this way, the problem can be overcome by writing an ABAP program.

Related Content

[SAP Help Portal](#)

[SAP Community Network](#)

[SAP Support Portal](#)

For more information, visit the [EDW homepage](#)

Disclaimer and Liability Notice

This document may discuss sample coding or other information that does not include SAP official interfaces and therefore is not supported by SAP. Changes made based on this information are not supported and can be overwritten during an upgrade.

SAP will not be held liable for any damages caused by using or misusing the information, code or methods suggested in this document, and anyone using these methods does so at his/her own risk.

SAP offers no guarantees and assumes no responsibility or liability of any type with respect to the content of this technical article or code sample, including any liability resulting from incompatibility between the content within this document and the materials and services offered by SAP. You agree that you will not hold, or seek to hold, SAP responsible or liable with respect to the content of this document.