

## Applies to:

SAP MDM

## Summary

The article explains the usage of MDM Workflow History, its various parameters and how we can use them to model business reports and metrics.

**Author:** Ketan Phanse

**Company:** Wipro Technologies

**Created on:** 03 July 2008

## Author Bio



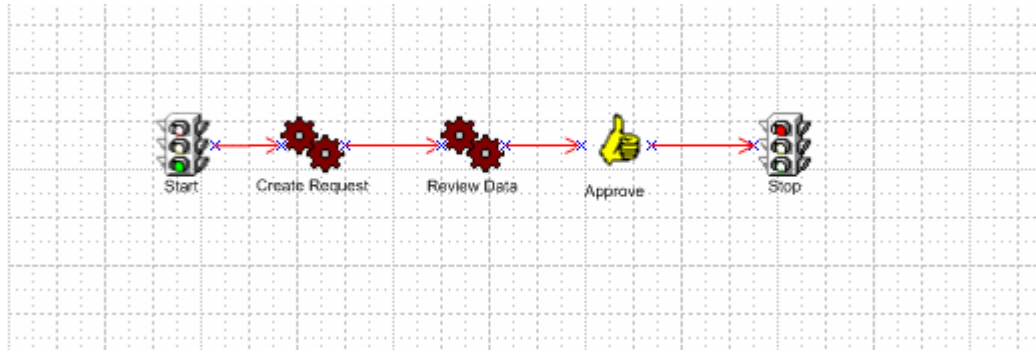
He has been associated with Wipro Technologies and SAP MDM for more than a year and has completed his Master's in IT and MBA in Systems Management.

## Table of Contents

1.	Introduction .....	3
2.	Viewing MDM Workflow History.....	4
3.	Parameters of Workflow History .....	5
4.	Creating Process reports .....	7
	Related Content.....	8
	Disclaimer and Liability Notice.....	9

## 1. Introduction

SAP MDM provides a strong Workflow functionality to design complex business scenarios. Using MS Visio as the designing tool and functions and steps provided by MDM, one can convert business process into workflows which would guide the entire creation of master data. One example of a simple approval process is shown below:



Not only does SAP MDM provide features to develop and design such scenarios but also gives you "Workflow History".

Workflow History is a detailed report about individual workflow having parameters on time, users, steps, records etc. It can be used to trace the progress of each workflow and help analyze them by drilling down to Workflow → Step → User levels.

The below sections gives details on how to view the history, what are the various parameters in the workflow history and how we can use the history as metric tool.

## 2. Viewing MDM Workflow History

To view "Workflow History", follow the below steps:

- a. Select Record Mode in Data Manager
- b. Select Workflow tab
- c. Select any existing workflow and right click to select "Show History"
- d. A popup would open showing Workflow History

The screenshot displays the SAP MDM Data Manager interface. The main window is titled "SAP MDM Data Manager - MATERIAL\_EN\_ONLY [10.66.16.49] - English [US]". The interface is divided into several sections:

- Search Parameters:** Includes "Material Type" with lookups for "Application" (values: [ALL], [NULL]) and "Material Types" (values: Unlaunched, Available, Received, Send Next, Cascaded, Completed, Error).
- Records:** A table showing a single record with Id 771, Material Number TEST001, and Description NOUN TEST001 DESCRIPTION.
- Workflows:** A table showing various workflow tasks. The task "WF\_01\_ReserveProductNumber" is selected, and a context menu is open over it, with "Show History" highlighted.
- Workflow History:** A table showing the history of the selected task, including Step, Step Description, and Status.

Step	Step Description	Status
Stop (2)		Completed
Stop (3)		Completed
Stop		Completed
Stop (2)		Completed
Stop (3)		Completed
Stop		Completed
Stop (2)		Completed
Stop (2)		Completed
Stop (2)		Completed
Stop		Completed
Stop		Completed
Stop (4)		Completed
Stop		Completed
Stop		Completed
Stop (4)		Completed
Stop		Completed

Shows the history of the selected task

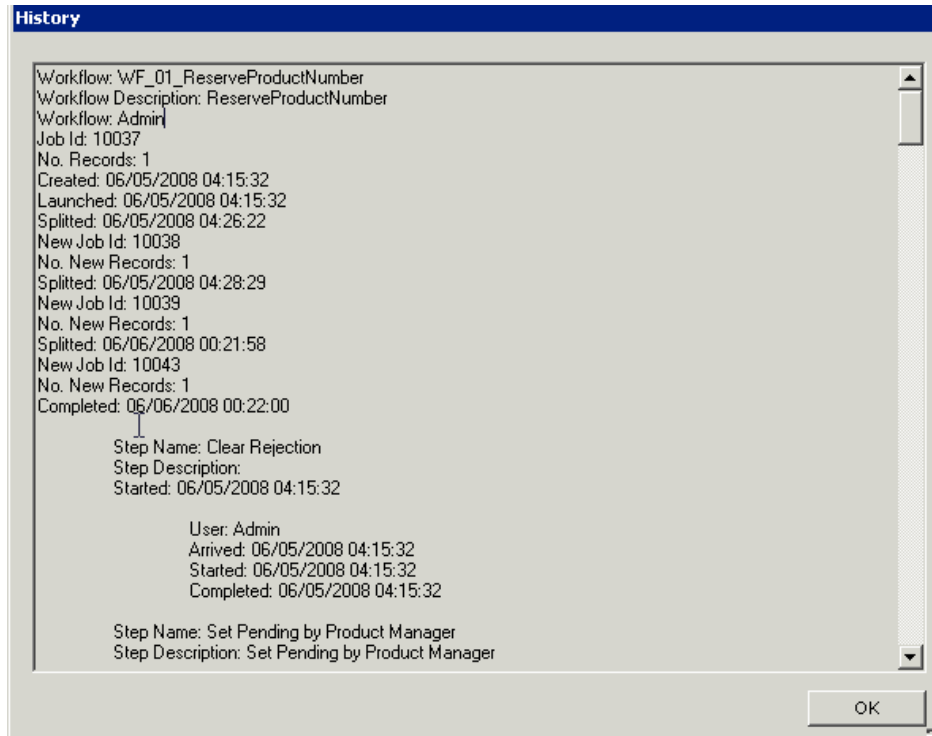
658 Items

### 3. Parameters of Workflow History

The Workflow History has various details in it. They can be grouped into three categories:

- a. Workflow details
- b. Step details
- c. User details

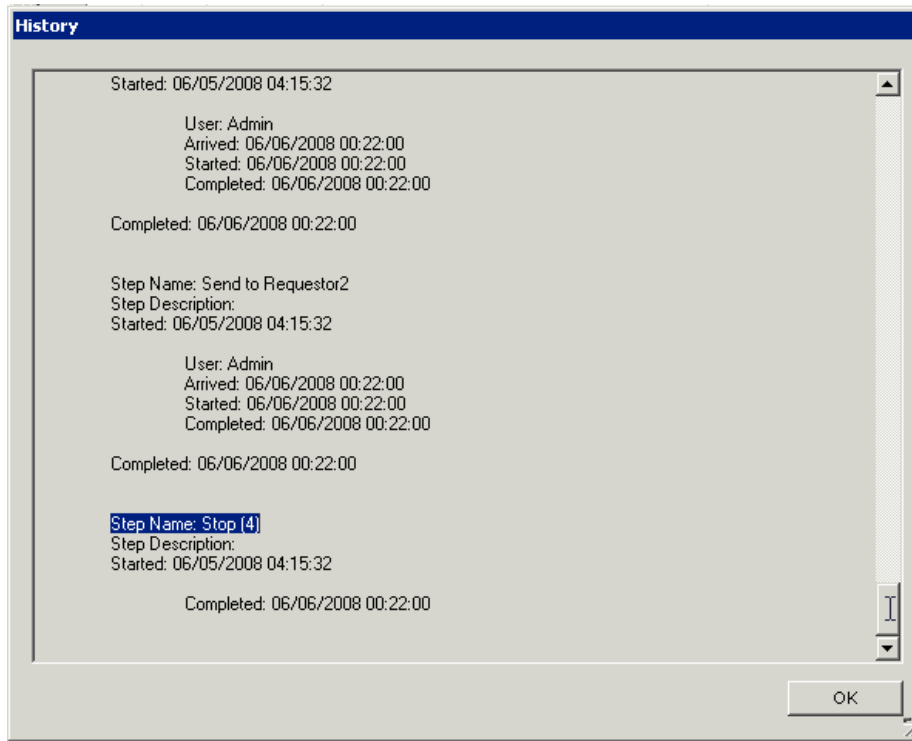
Each of the above category has multiple parameters for it which are listed below.



- **Workflow Parameters**
  - Workflow Name
  - Workflow Description
  - Owner
  - Job Id
  - Number of Records
  - Creation Date and Time
  - Launched Date and Time
  - Completion Date and Time
  - Splitted Date and Time
  - Job Id after Splitting
- **Workflow Step Parameters**
  - Step Name
  - Step Description

- Start Date and Time
- **User Parameters**
  - User
  - Arrived Date and Time
  - Started Date and Time
  - Completed Date and Time

As you can see the “Completed Date & Time” in the Workflow details match that of the last “Stop” step.



#### 4. Creating Process reports

As seen above, the Workflow History gives a range of details for different cases. These values are not stored directly as fields in MDM and hence cannot be accessed via Data Manager.

However MDM Java API's have access to them. Using MDM Java API we can access each of these parameters and then use the workflow history to generate a report. The image below shows a sample excel screen developed using the History parameters. Obviously this has to be developed using JAVA API's on Portal which would require significant efforts.

Status	Available					
Job Id	Workflow Name	Status	Step name	User	Date Arrived	MDM ID
10191	01_Create_Material	Available	Approve Request	mark05	20/01/2008	8997
History						
Steps	Description	User	Arrived	Start	End	Turnout Time
Review	Review Request	roba03	17/01/2008	18/01/2008	20/01/2008	42:04 Hours
Approve	Approve Request	peth03	19/01/2008	19/01/2008	20/01/2008	28:35 Hours
Total Turnout time						70:39 Hours

The above example shows how start time and end time can be used to calculate turnaround time. How further to use this as a KPI or metric or a report, I leave it to your imagination!

## Related Content

SAP MDM Data Manager Reference Guide

[http://help.sap.com/saphelp\\_mdm550/helpdata/en/43/e0615f82b40a2ee10000000a11466f/frameset.htm](http://help.sap.com/saphelp_mdm550/helpdata/en/43/e0615f82b40a2ee10000000a11466f/frameset.htm)

<https://www.sdn.sap.com/irj/sdn/go/portal/prtroot/docs/library/uuid/60559952-ff62-2910-49a5-b4fb8e94f167>



## Disclaimer and Liability Notice

This document may discuss sample coding or other information that does not include SAP official interfaces and therefore is not supported by SAP. Changes made based on this information are not supported and can be overwritten during an upgrade.

SAP will not be held liable for any damages caused by using or misusing the information, code or methods suggested in this document, and anyone using these methods does so at his/her own risk.

SAP offers no guarantees and assumes no responsibility or liability of any type with respect to the content of this technical article or code sample, including any liability resulting from incompatibility between the content within this document and the materials and services offered by SAP. You agree that you will not hold, or seek to hold, SAP responsible or liable with respect to the content of this document.